

epure

standing seam attitude



SUMMARY

EPURE

ATELIERS 3S	4
EPURE	12
CONCEPT.....	14
SIDINGS	16
EPURE CDB 200.....	18
EPURE CDB 250.....	20
EPURE CDB 300.....	22
EPURE CDB 333.....	24
EPURE CDB 400.....	26
SPAN TABLES.....	28
INSTALLATION	30
FINISHING PROFILES	44
PROJECTS GALLERY	54
COLOR CHART	60

THE LATEST ENTRANT

ATELIERS 

How is it that the latest company in the field of metal cladding has taken less than 10 years to shape its market?

“

You're familiar with the following universal theory; everyone can identify with it: one of the great enemies of humankind – of our human way of thinking – *is habit*.

The habit of **thinking within a certain framework** not because we have established it ourselves, but just because it is there, locking us into an ultimately comfortable standard process: Thinking like Mr. Average.

Our story perfectly embodies how to buck this trend: we are the latest entrant to the French metal cladding market. Despite being the most recently established company, in just over 10 years, we have built a reputation that is unrivalled in the sector, consistently outpacing the competition with our original and desirable designs; **our influence is clearly unrelated to our economic weight.**

10 YEARS

OF FIRSTS

IMPACT

- first to reinvent the aesthetics of metal clad buildings
- first to bring steel cladding into towns and cities
- first to offer a 30-year warranty
- first to invent a random facade
- first to offer low carbon steel as standard
- first selective lacquering of a pre-painted coil



IMPACT DESIGN



We have pushed back the boundaries and brought steel cladding **into cities and towns**. Offices, apartment blocks, interior design – a significant part of our business is generated by projects outside industrial buildings; steel cladding is now considered a desirable element.

We have consulted architects, builders, artisans and contractors. Together, we have radically changed the scene in just a few years. Ateliers 3S impacts on its market in terms both of building aesthetics and environmental concerns, and is creatively liberating.

This positive impact becomes yours also. It is encoded in your buildings. **Permanently.**”



IMPACT CLIMAT

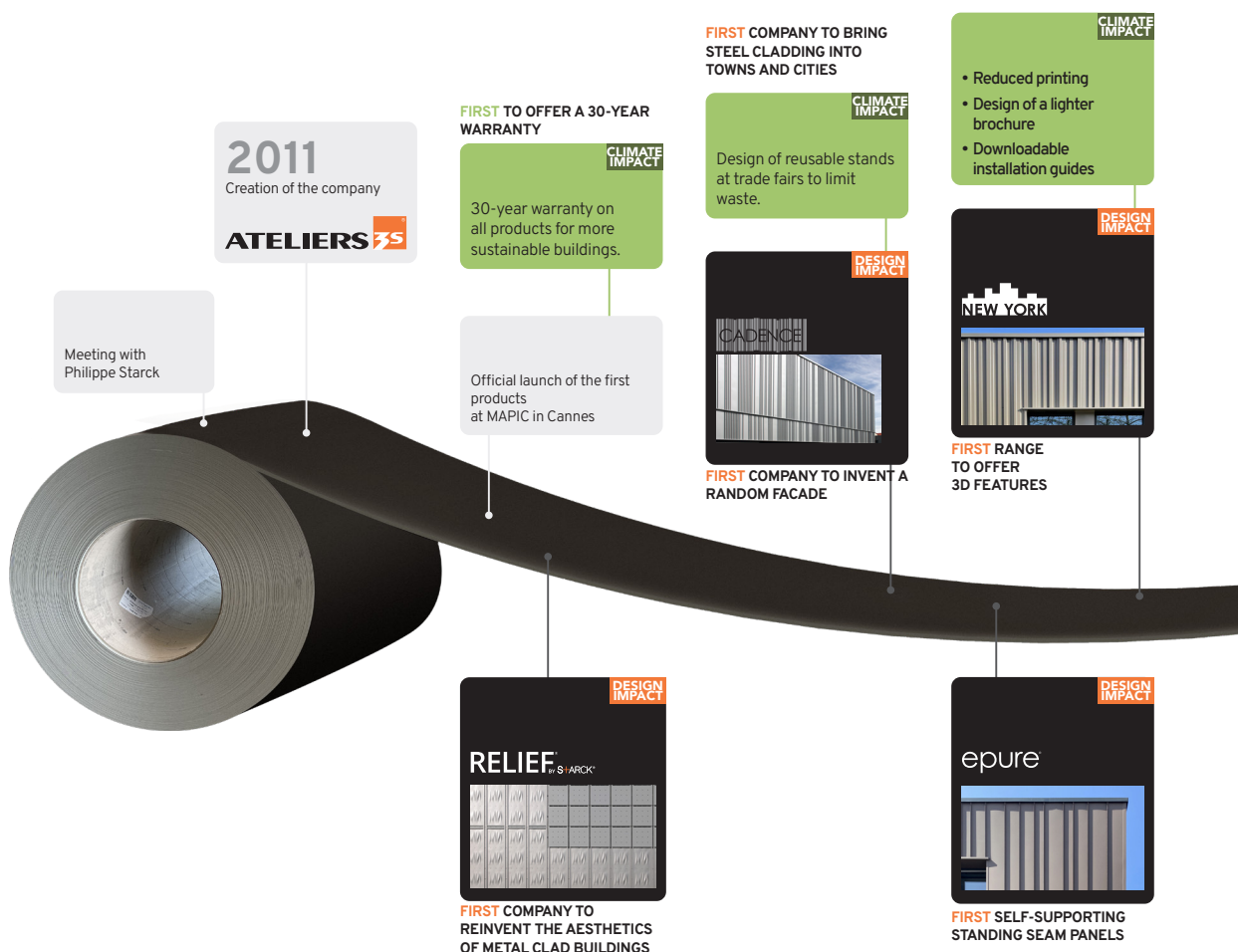


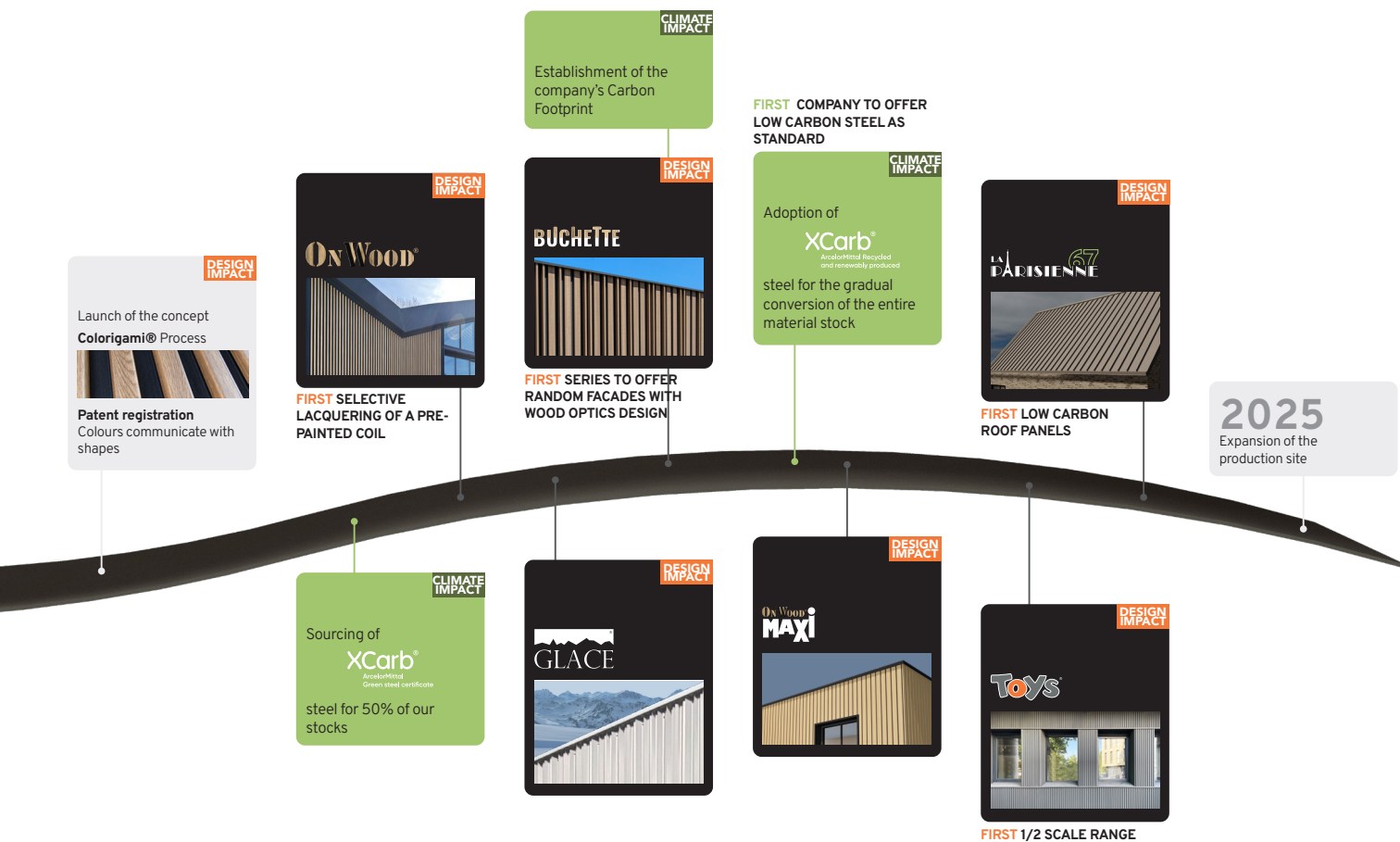
Our **30-year warranty** – ensuring that our products last three times longer – was our first step in an eco-friendly approach to sustainability and economy. However, while steel can be recycled repeatedly, the recyclable volume currently available is only sufficient to meet a quarter of global demand. The future therefore lies in low carbon steel.

As of 2024, we are the first company to offer the new low carbon steel as standard. Climate concerns are not an option; by anticipating that the carbon footprint of any building will be a determining factor in its construction, we are offering our customers the opportunity to be in phase with future trends.”

OUR

HISTORY









epure

EPURE RANGE

epure

standing seam attitude

An exclusive range of standing seam panels with exclusive matte colours for a true-to-life zinc look.

5 designs for a rhythmic or random facade.

The simplicity of a self-supporting steel panel, the beauty of zinc.

Rythm

Crescendo



5
PANELS

5
WIDTHS

4
COLOURS

For endless possibilities

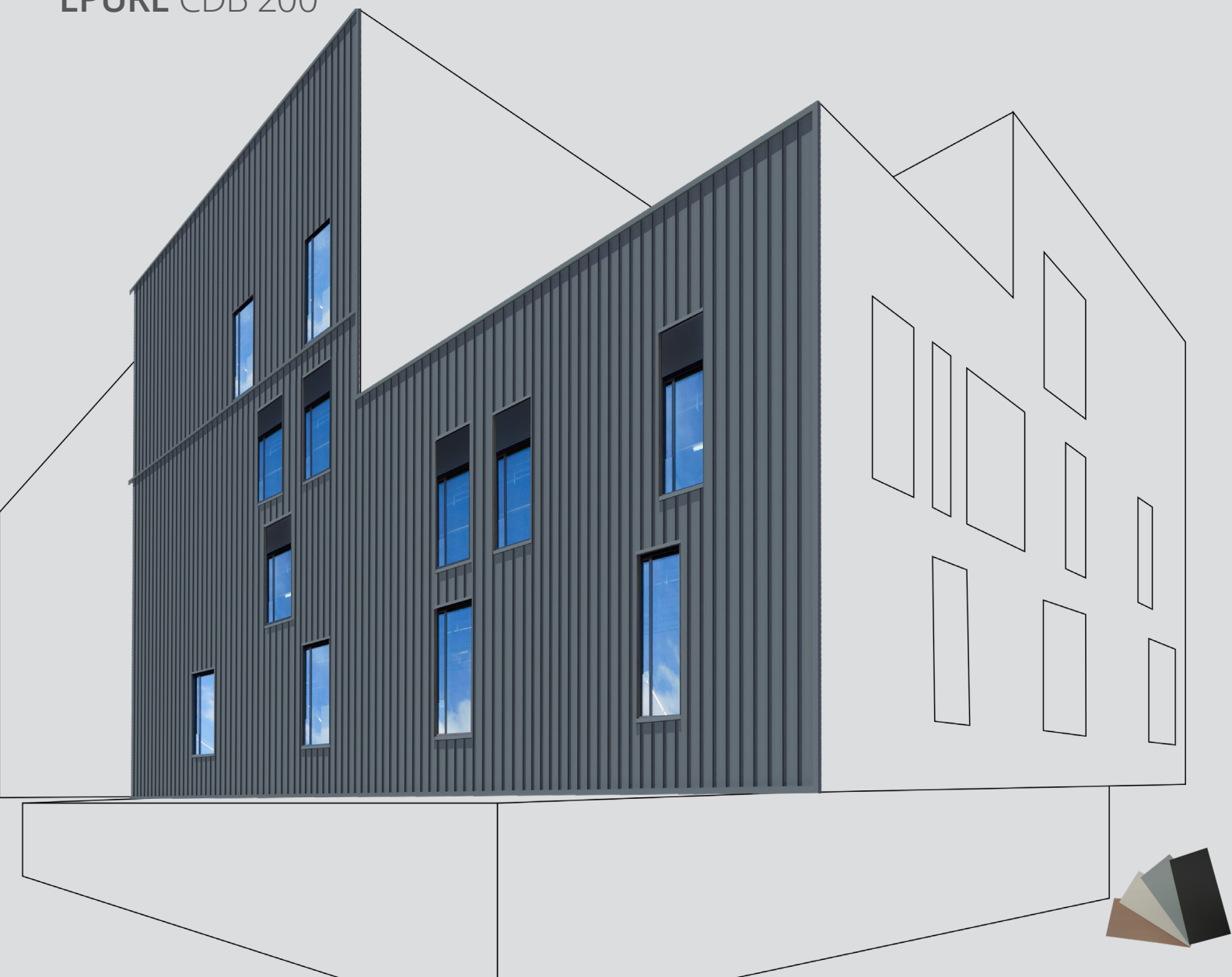
Random

Regular



SIDING

EPURE CDB 200



EPURE CDB 200

Material	Effective width (mm)	Thickness (mm)	Weight (kg/m²)
Acier S320 GD + Z275	200	1.0	13.7

Coating	Norm
Polyurethane 50μ	Coil coating EN 10169
Post-coating 60μ	
Other coating	Upon request

Profile height : 55 mm

Sheets length : 6000mm maximum

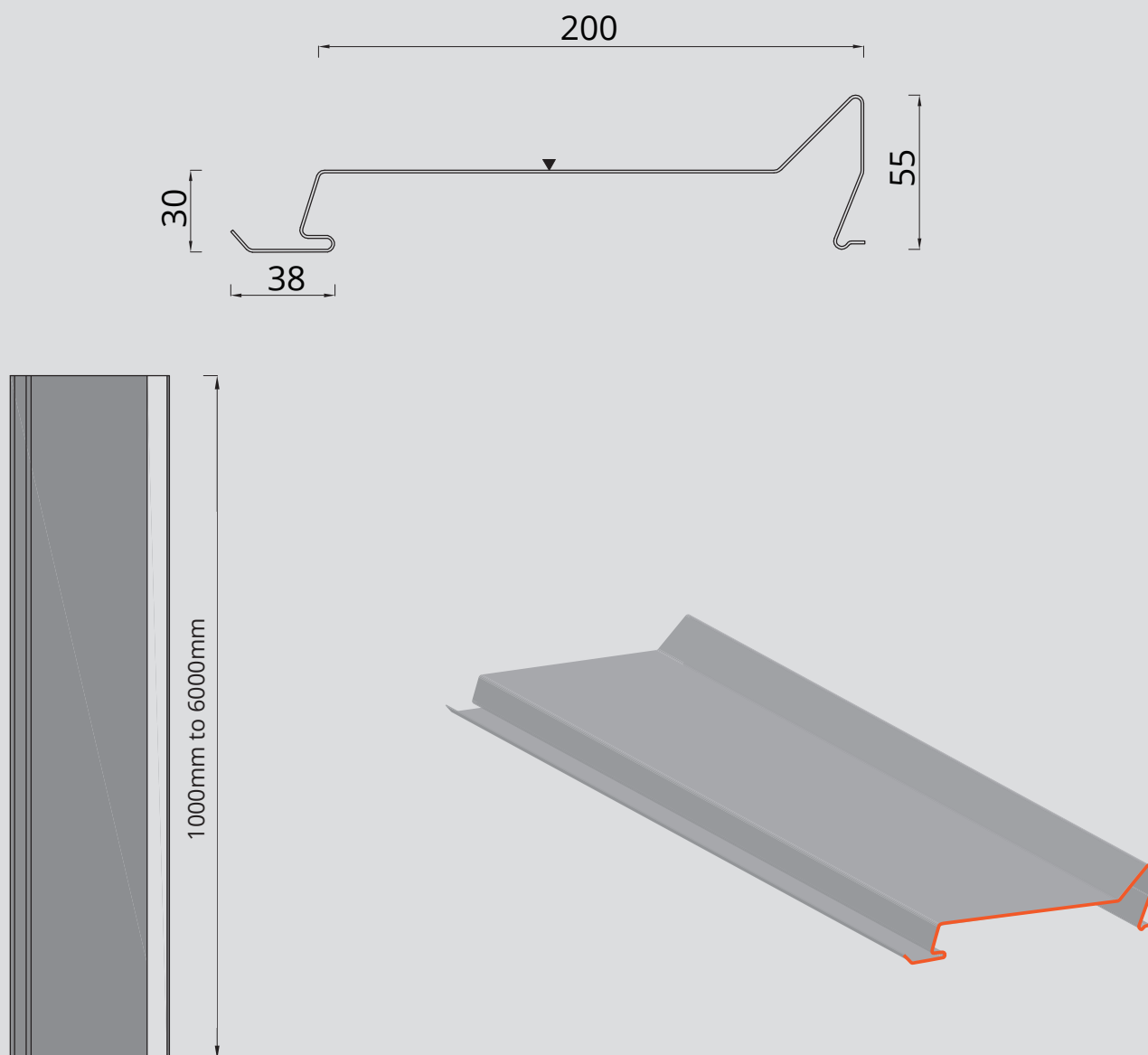
REGISTERED
DESIGNS

30-YEAR WARRANTY
FIRE : A1
IMPACT : Q4

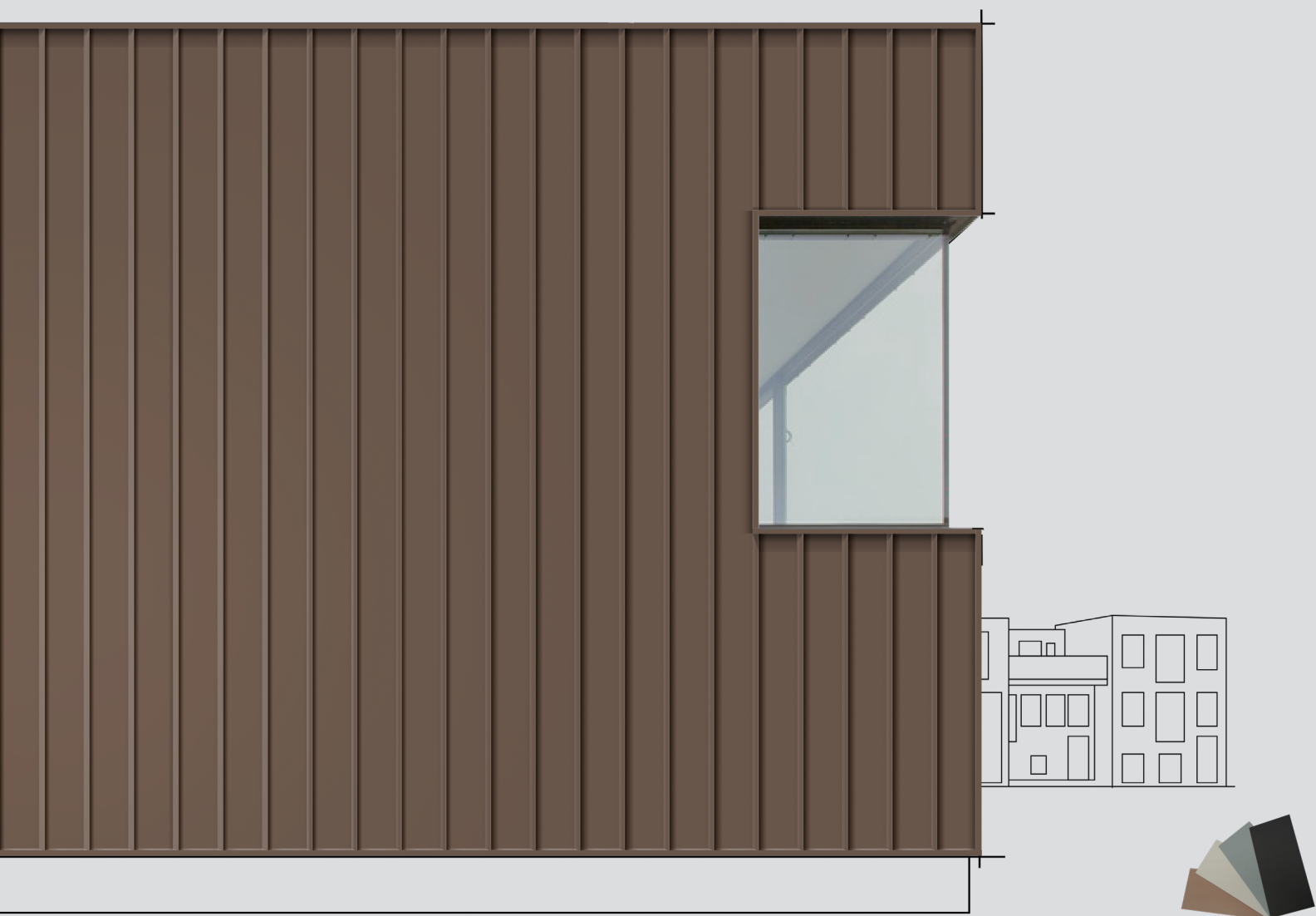
TRADITIONAL
INSTALLATION
METHOD
CSTB 3747

MADE IN FRANCE

DWG, BIM,
SKETCHUP FILES
TO DOWNLOAD
ON OUR WEBSITE



EPURE CDB 250



EPURE CDB 250

Material	Effective width (mm)	Thickness (mm)	Weight (kg/m ²)
Acier S320 GD + Z275	250	1.0	12.5

Coating	Norm
Polyurethane 50μ	Coil coating EN 10169
Post-coating 60μ	
Other coating	Upon request

Profile height : 55 mm

Sheets length : 6000mm maximum

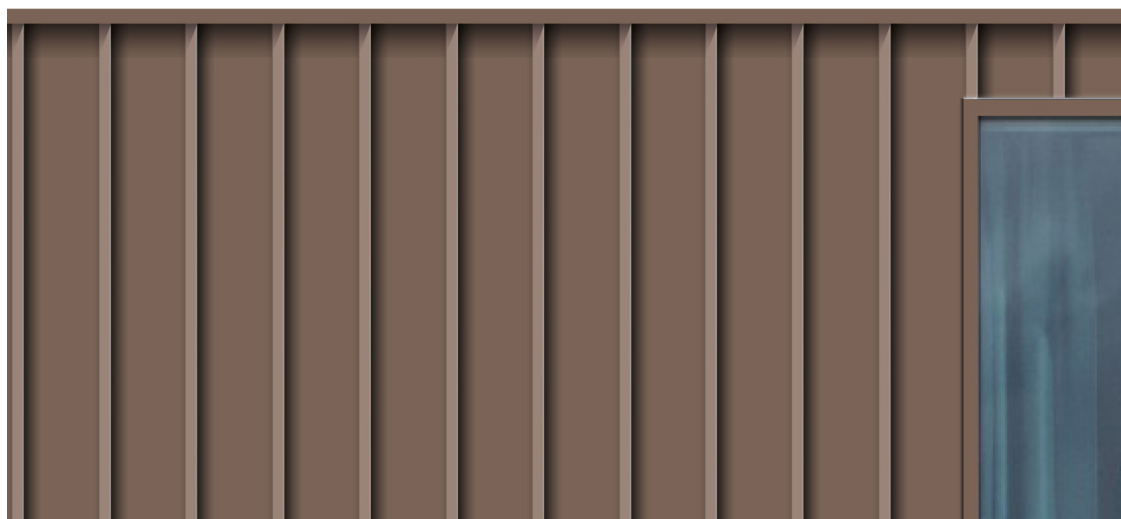
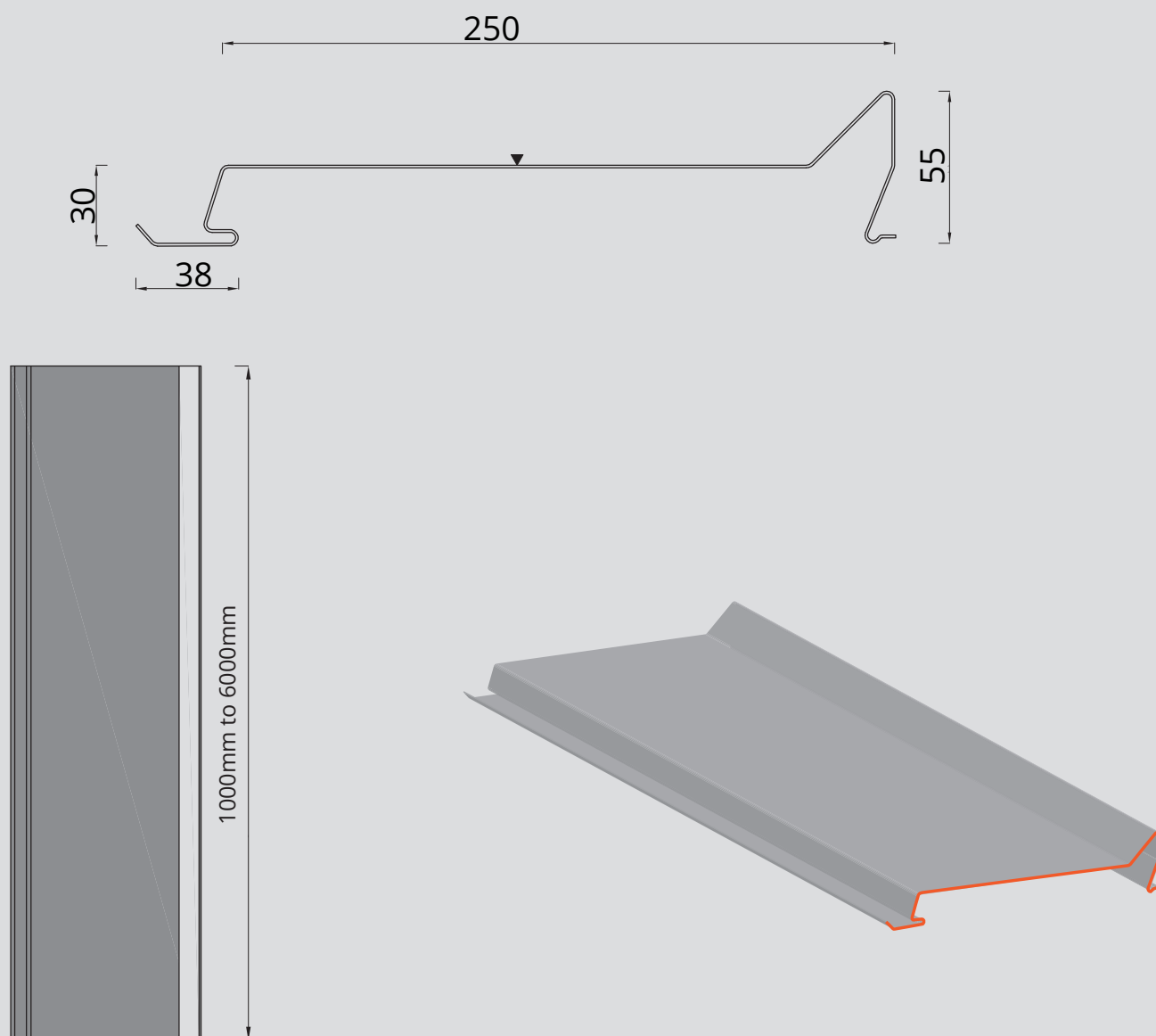
REGISTERED
DESIGNS

30-YEAR WARRANTY
FIRE : A1
IMPACT : Q4

TRADITIONAL
INSTALLATION
METHOD
CSTB 3747

MADE IN FRANCE

DWG, BIM,
SKETCHUP FILES
TO DOWNLOAD
ON OUR WEBSITE



EPURE CDB 300



EPURE CDB 300

Material	Effective width (mm)	Thickness (mm)	Weight (kg/m ²)
Acier S320 GD + Z275	300	1.0	11.8

Coating	Norm
Polyurethane 50μ	Coil coating EN 10169
Post-coating 60μ	
Other coating	Upon request

Profile height : 55 mm

Sheets length : 6000mm maximum

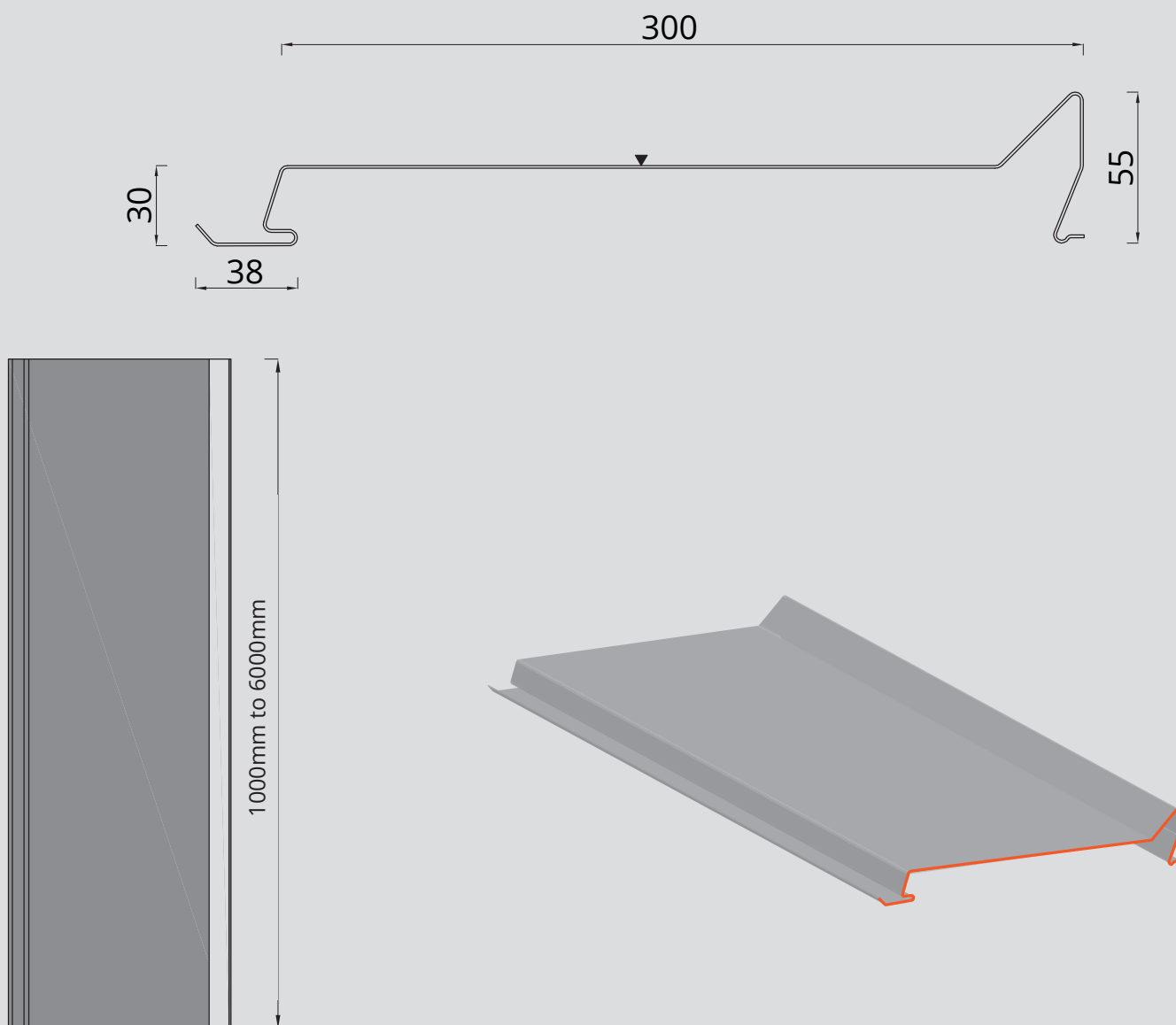
REGISTERED
DESIGNS

30-YEAR WARRANTY
FIRE : A1
IMPACT : Q4

TRADITIONAL
INSTALLATION
METHOD
CSTB 3747

MADE IN FRANCE

DWG, BIM,
SKETCHUP FILES
TO DOWNLOAD
ON OUR WEBSITE



EPURE CDB 333



EPURE CDB 333

Material	Effective width (mm)	Thickness (mm)	Weight (kg/m²)
Acier S320 GD + Z275	300	1.0	11.32

Coating	Norm
Polyurethane 50μ	Coil coating EN 10169
Post-coating 60μ	
Other coating	Upon request

Profile height : 55 mm

Sheets length : 6000mm maximum

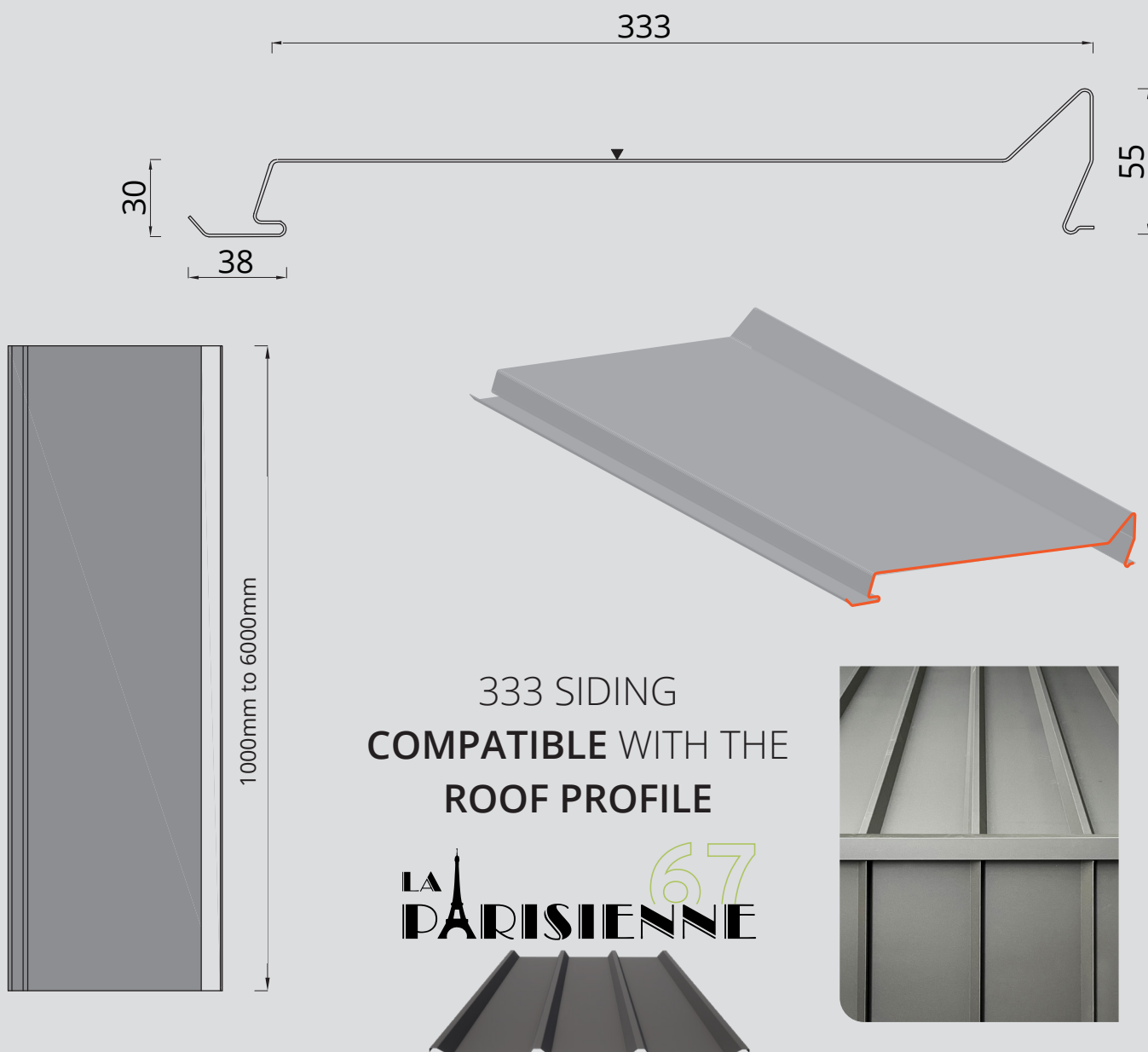
REGISTERED
DESIGNS

30-YEAR WARRANTY
FIRE : A1
IMPACT : Q4

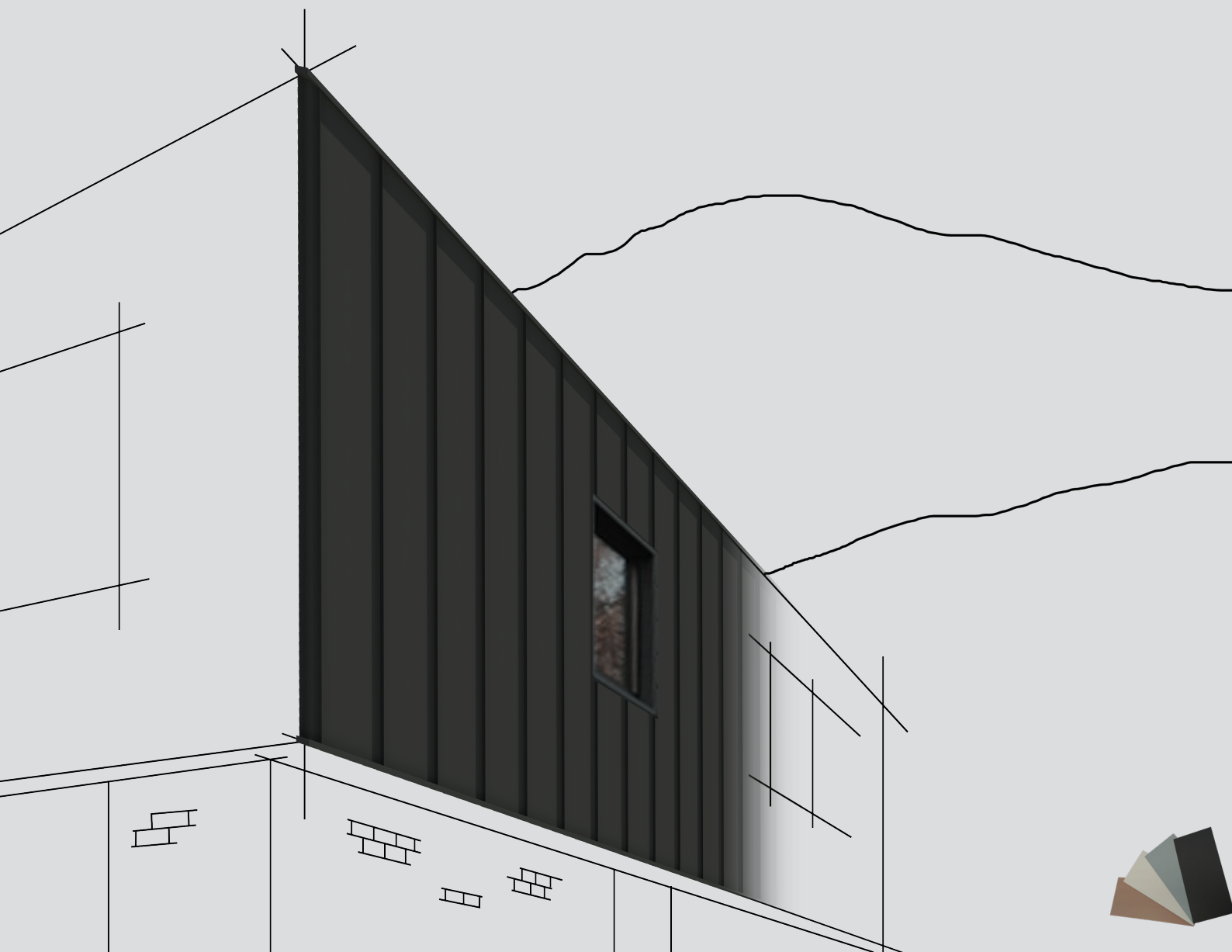
TRADITIONAL
INSTALLATION
METHOD
CSTB 3747

MADE IN FRANCE

DWG, BIM,
SKETCHUP FILES
TO DOWNLOAD
ON OUR WEBSITE



EPURE CDB 400



EPURE CDB 400

Material	Effective width (mm)	Thickness (mm)	Weight (kg/m ²)
Acier S320 GD + Z275	400	1.0	10.8

Coating	Norm
Polyurethane 50μ	Coil coating EN 10169
Post-coating 60μ	
Other coating	Upon request

Profile height : 55 mm

Sheets length : 6000mm maximum

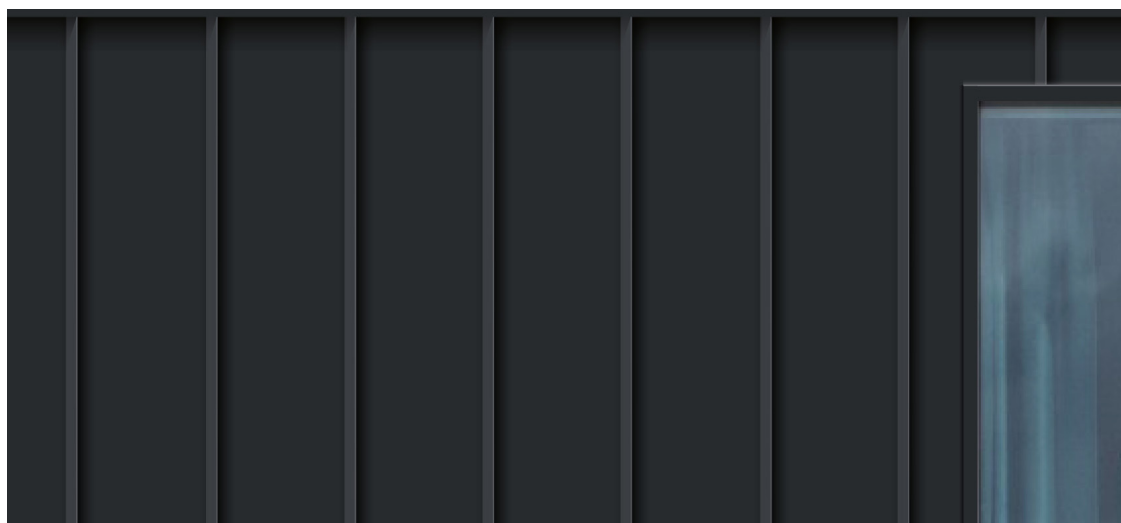
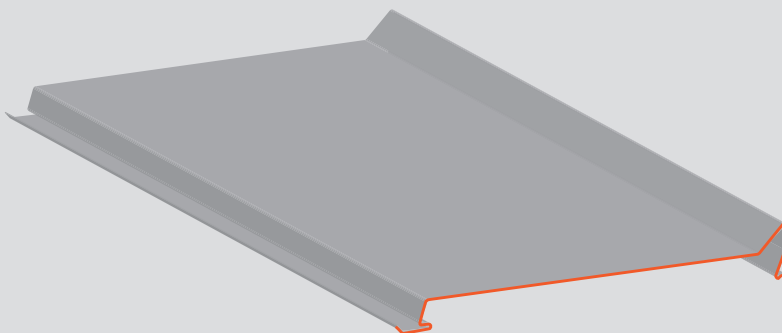
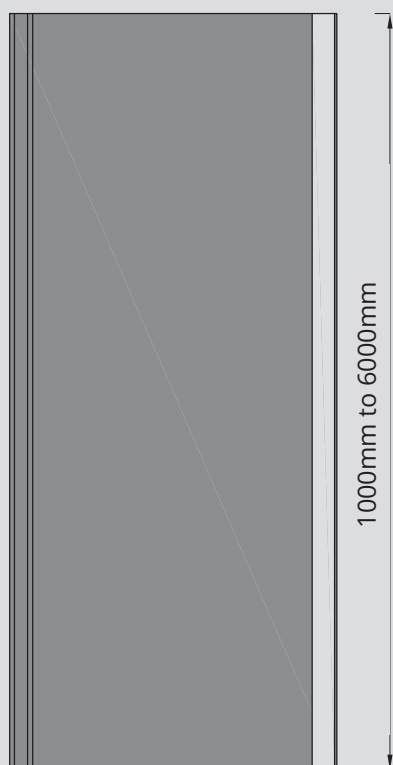
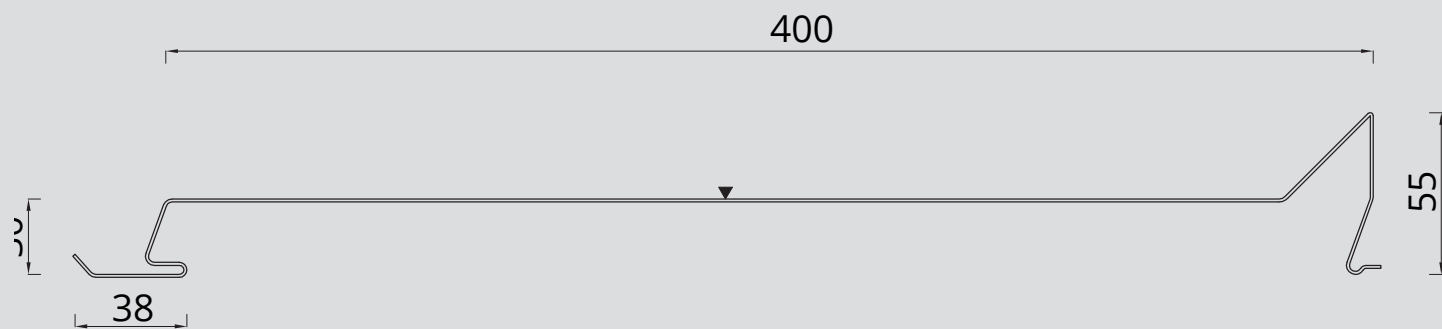
REGISTERED
DESIGNS

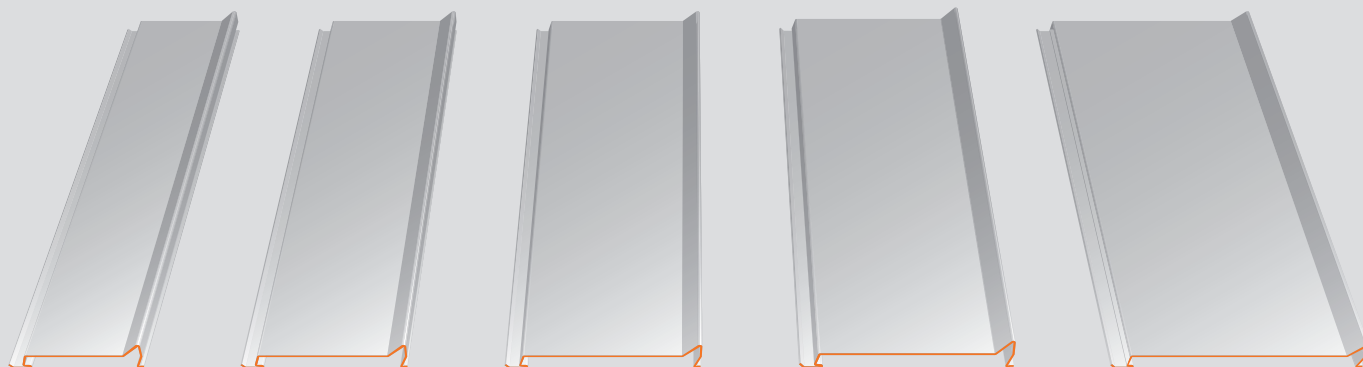
30-YEAR WARRANTY
FIRE : A1
IMPACT : Q4

TRADITIONAL
INSTALLATION
METHOD
CSTB 3747

MADE IN FRANCE

DWG, BIM,
SKETCHUP FILES
TO DOWNLOAD
ON OUR WEBSITE





EPURE CDB 200

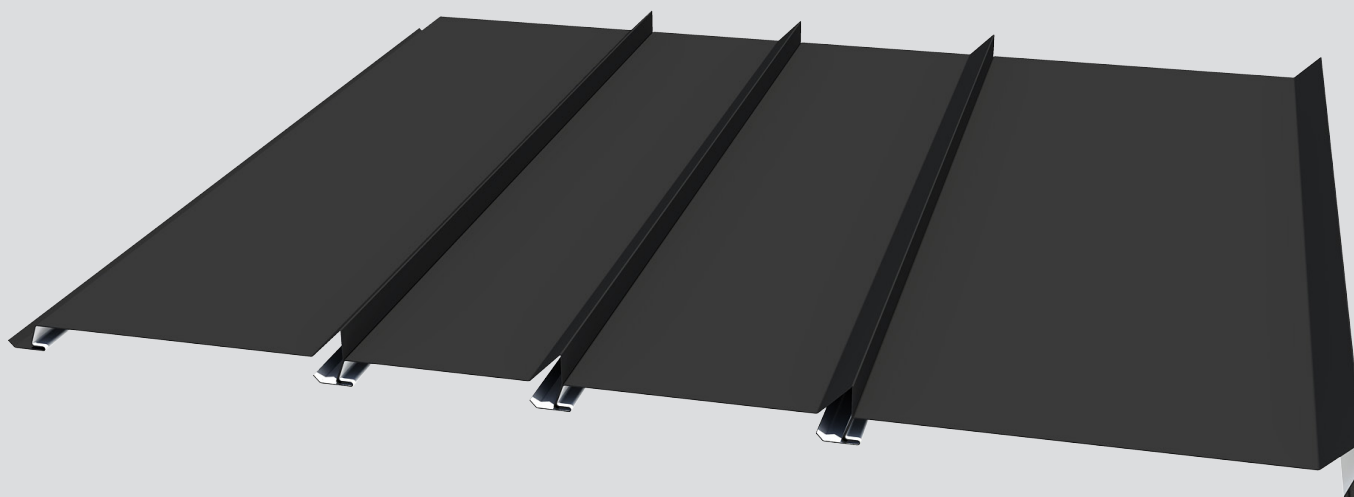
EPURE CDB 250

EPURE CDB 300

EPURE CDB 333

EPURE CDB 400

All sidings are **compatible** and **can be mixed together**



LOAD CAPACITIES

EPURE CDB 200, 250, 300

SPAN TABLES IN DAN/M², ACCORDING TO WIND LOAD

Limit deflection criterion taken into account: 1/200th according to NV65

Nominal thicknesses in mm

PRESSURE		Span (m) en m	SUCTION	
2 supports	3 supports		2 supports	3 supports
876	823	1,00	102	87
775	823	1,10	102	87
688	823	1,20	102	87
612	823	1,30	102	87
547	823	1,40	102	87
491	823	1,50	102	87
459	740	1,60	90	78
423	644	1,70	80	70
367	565	1,80	71	63
320	498	1,90	63	57
281	442	2,00	55	52

TEST REPORT N°
S1013/19/331Test performed
according to norm NF P
34-503 from Nov 1995

The EPURE range metal sidings are non-structural sheets according to standard NF EN 14782:2006, and as per CPT 3747 from CSTB not intended to receive PPE anchoring devices according to EN 795 standard or lifelines.

EPURE CDB 333, 400

SPAN TABLES IN DAN/M², ACCORDING TO WIND LOAD

Limit deflection criterion taken into account: 1/200th according to NV65

Nominal thicknesses in mm

PRESSURE		Span (m) en m	SUCTION	
2 supports	3 supports		2 supports	3 supports
207	187	1,00	126	84
197	187	1,10	118	84
184	187	1,20	109	84
170	187	1,30	99	84
156	187	1,40	91	84
143	187	1,50	83	84
124	181	1,60	73	71
108	173	1,70	57	56
95	164	1,80	45	44
84	155	1,90	34	35
75	147	2,00	26	27

TEST REPORT N°
134287986-001-1Test performed
according to norm NF P
34-503 from Nov 1995

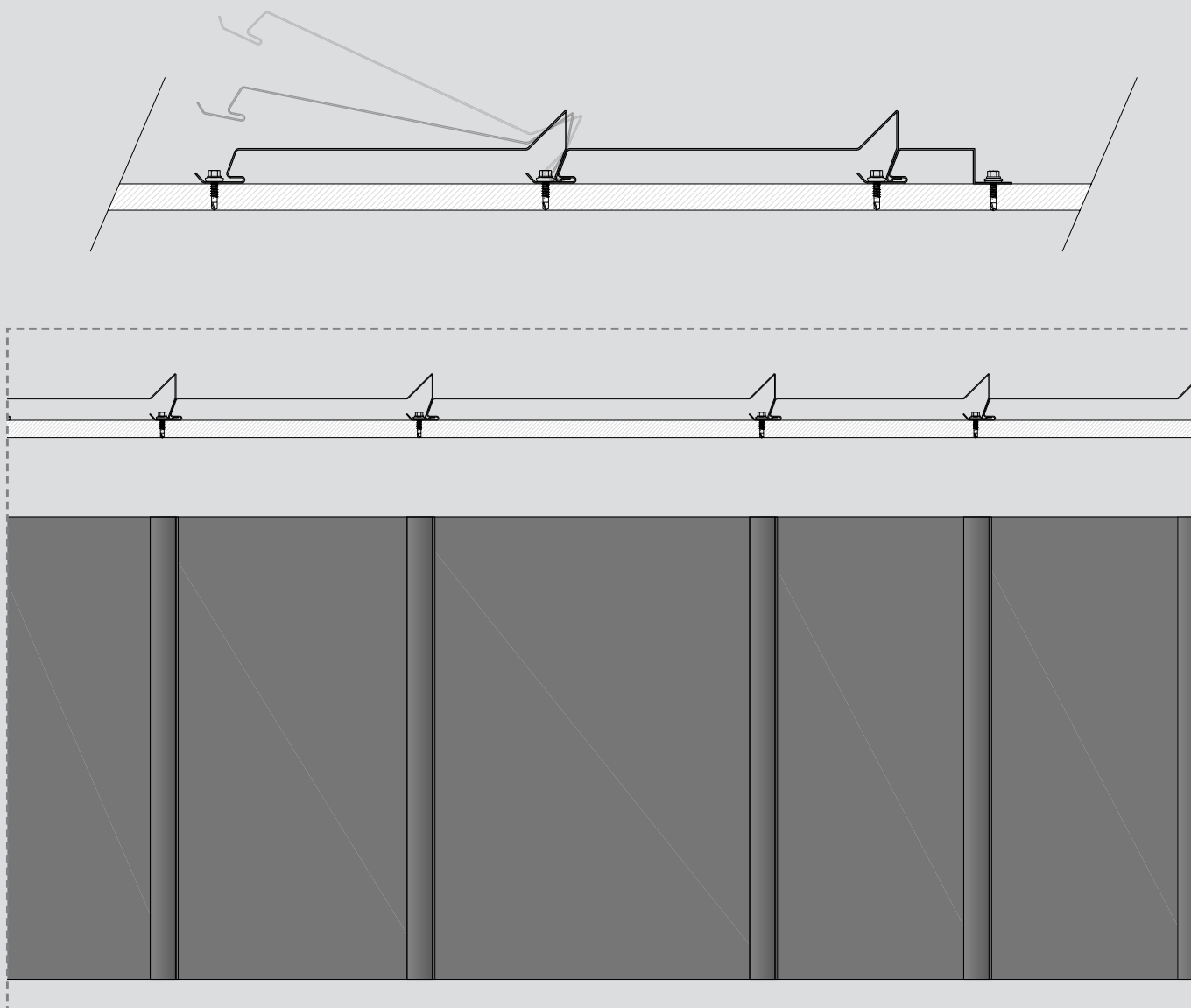
The EPURE range metal sidings are non-structural sheets according to standard NF EN 14782:2006, and as per CPT 3747 from CSTB not intended to receive PPE anchoring devices according to EN 795 standard or lifelines.

Lenght Minimum: 1000mm / Lenght Maximum : 6000 mm



INSTALLATION

SLAT INTERLOCKING SYSTEM / HIDDEN FIXING



EPURE sidings are concealed fastening products.

The sidings are screwed to the framework. Each siding covers the fastening of the previous one.

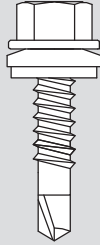
In this way, the sidings fit together one after the other.

Once the façade is complete, the sidings give the effect of a standing seam, while offering a simplified installation system that requires no special folding equipment. Self-supporting, they can be fixed to all types of framework.

Be careful **not to lean on the sidings when installing them**, to avoid distortion.

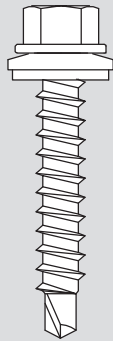
FIXING THE SIDINGS

FIXING ON METAL FRAME

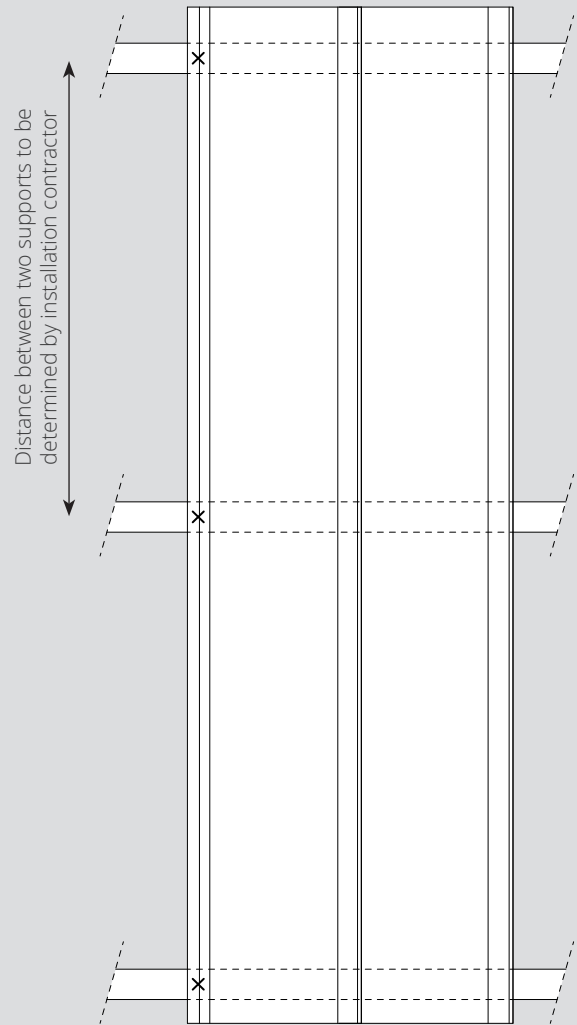


5,5x22mm mini

FIXING ON TIMBER FRAME



6.3x35mm mini



Screws position

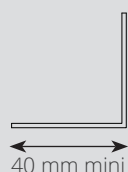
The screws used for EPURE sidings are standard: self-drilling stainless steel screws with collars, sized according to the type of secondary framework chosen.

A screw must be placed at each frame-siding intersection.

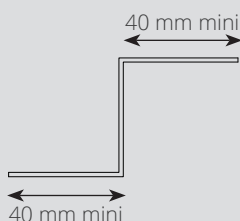
EPURE sidings can be installed on metal or wood secondary frameworks and on all types of buildings: concrete or masonry load-bearing structure, metal framework with double-skin cladding or load-bearing structure consisting of a timber-framed wall, in accordance with CSTB Cahier 3747-V2 of March 2024 (see installation details below).

SECONDARY FRAMING

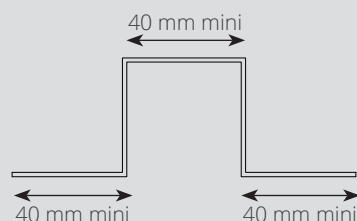
Metal framing «L»



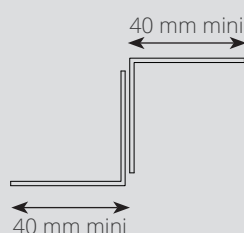
Metal framing «Z»



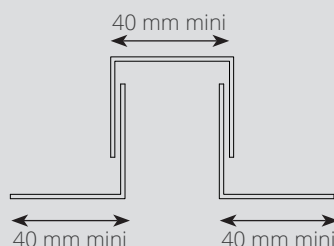
Metal framing «Ω»



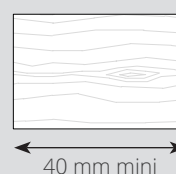
Ajustable metal framing
«Z»



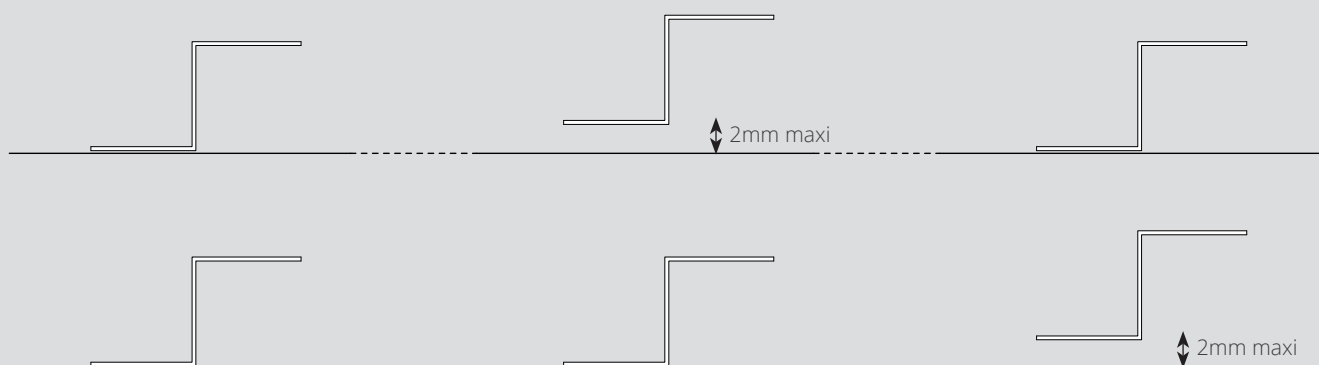
Ajustable metal framing
«Ω»



Timber frame



FLATNESS OF SUPPORT

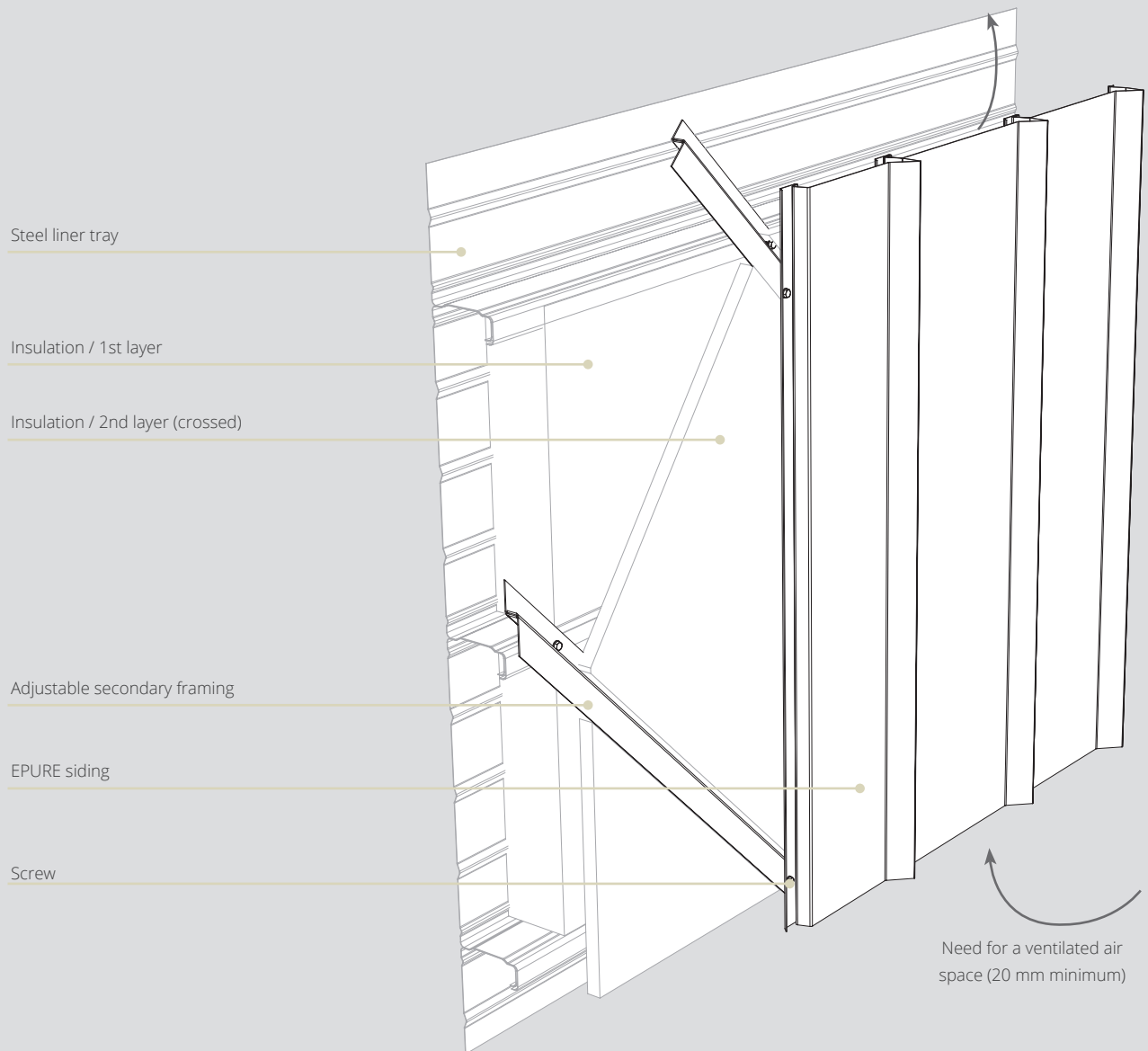


The secondary framing elements must be sized by the installation company. Metal framing should be at least 1.5mm thick.

The flatness of the support is essential when installing the panels.

Regardless of the type of secondary framework chosen (metal or wood), it must comply with **a maximum permissible co-planarity of 2mm over three supports.**

DOUBLE-SKIN INSTALLATION / VERTICAL APPLICATION

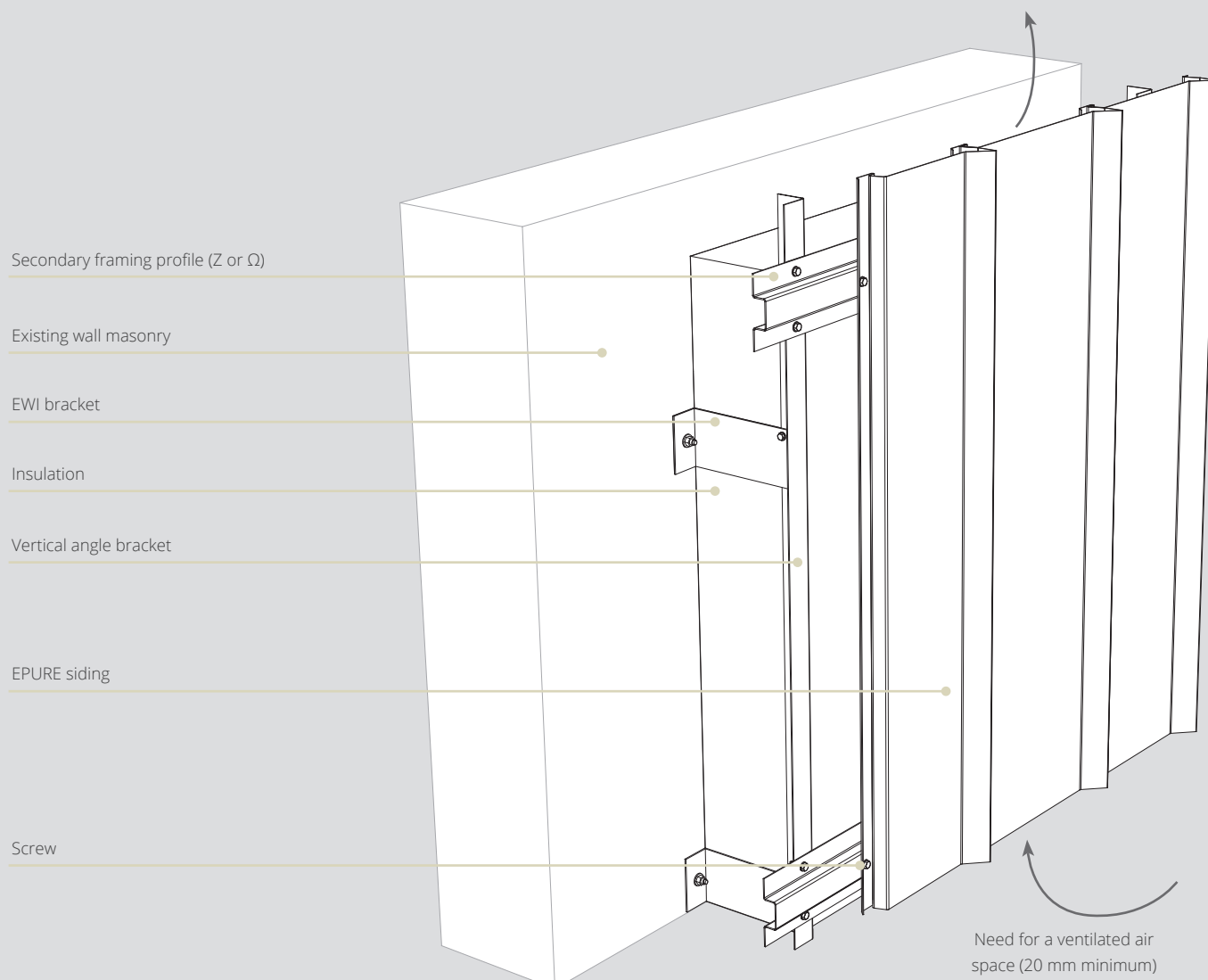


BUILDINGS WITH METAL FRAMING

The flatness of the support is very important the insulation must be positioned between the secondary framing elements and **the insulation must not be pinched** between the framing elements and the EPURE sidings. An adjustable secondary framework will ensure that the substrate is perfectly flat.

When installing the first siding, you must be careful to ensure that it is vertical, as this will determine the rest of the façade.

EXTERNAL WALL INSULATION (EWI) ON MASONRY WALLS WITH METAL FRAMING



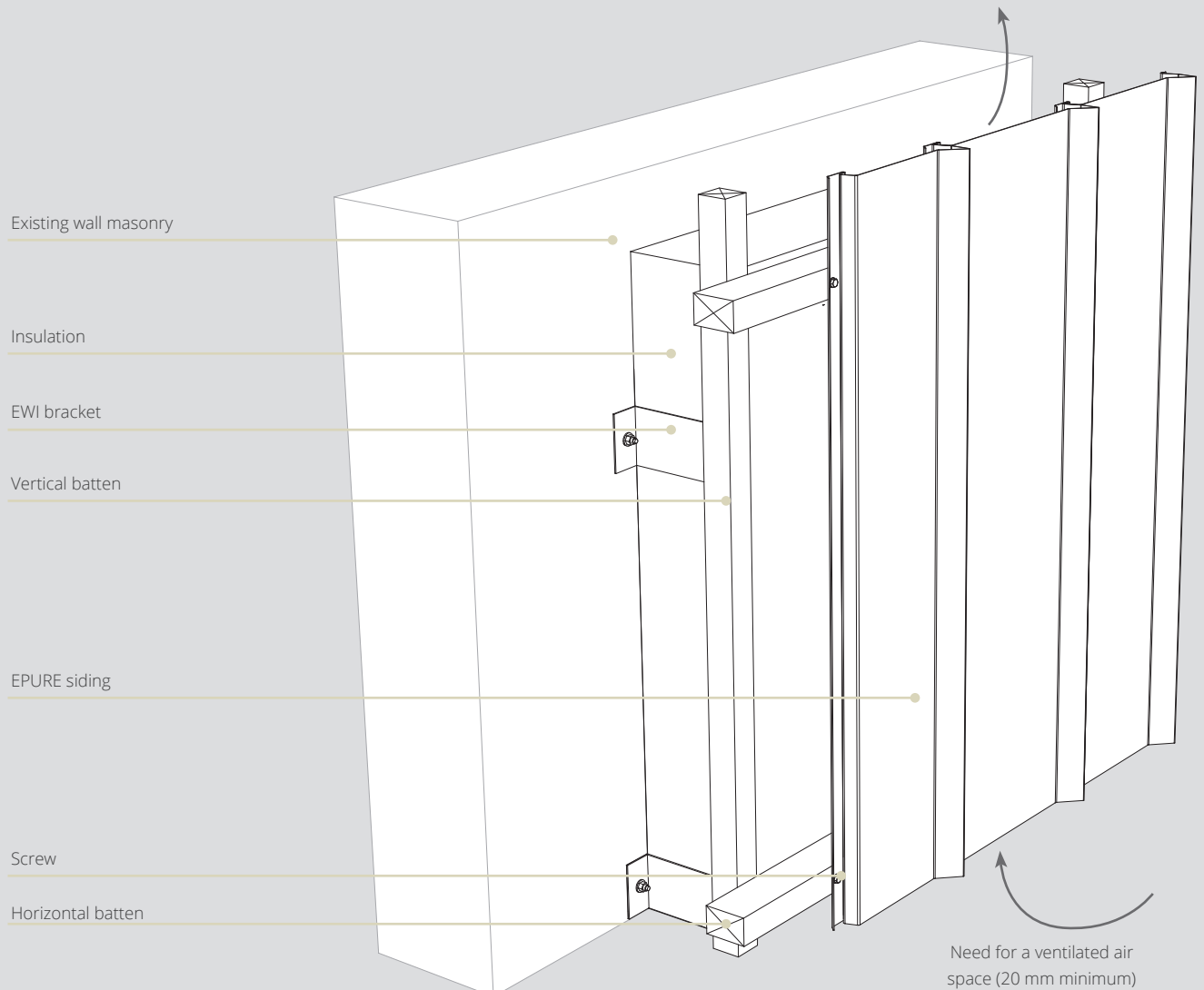
MASONRY WALLS

The flatness of the support is very important. The adjustable square brackets ensure that the frames are perfectly flat.

When installing the first siding, care should be taken to ensure that it is vertical, as this will determine the rest of the façade.

The framework and its installation comply with Cahier CSTB 3194.

EXTERNAL WALL INSULATION (EWI) ON MASONRY WALLS WITH TIMBER FRAMING



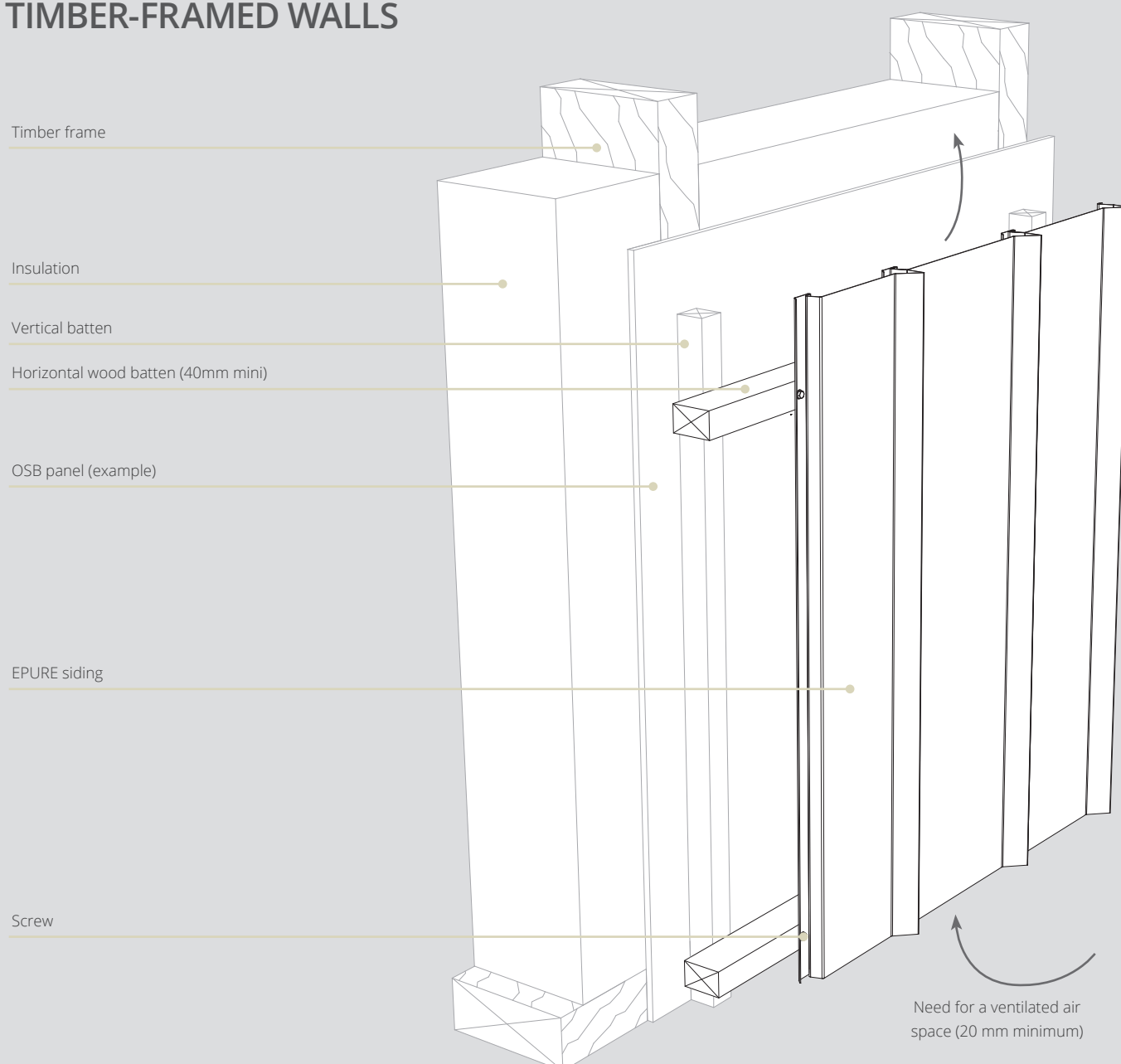
MASONRY WALLS

The flatness of the support is very important. The adjustable square brackets ensure that the frames are perfectly flat.

When installing the first siding, care should be taken to ensure that it is vertical, as this will determine the rest of the façade.

In the case of timber framing, a ventilated air space must be provided. The framework and its installation comply with Cahier CSTB 3316.

TIMBER-FRAMED WALLS



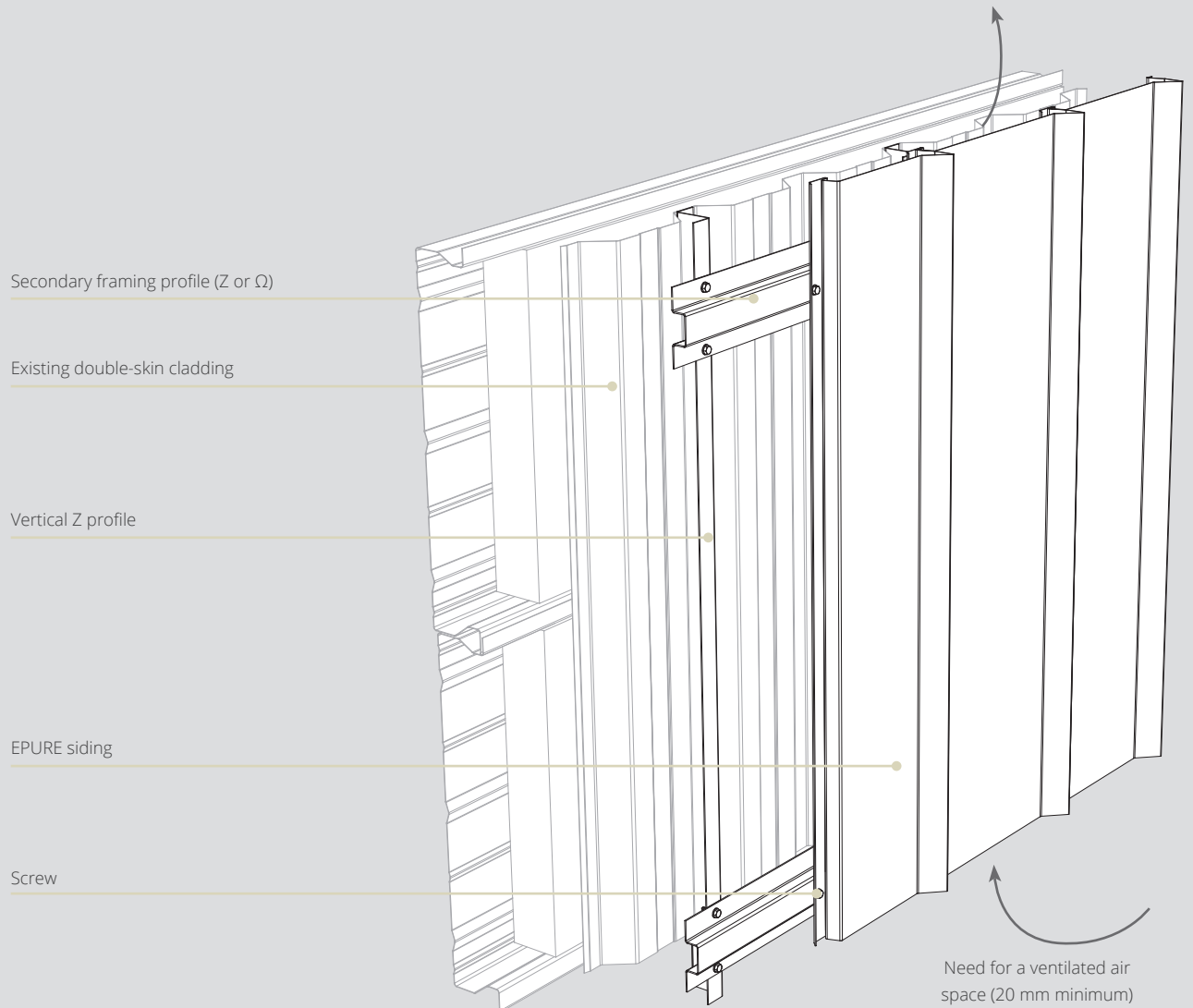
TIMBER-FRAMED WALLS

The flatness of the support is very important, it may be necessary to ensure that the frames are perfectly flat.

When installing the first siding, care should be taken to ensure that it is vertical, as this will determine the rest of the façade.

In the case of timber framing, a ventilated air space must be provided. The framework and its installation comply with Cahier CSTB 3316.

INSTALLATION ON EXISTING DOUBLE-SKIN CLADDING

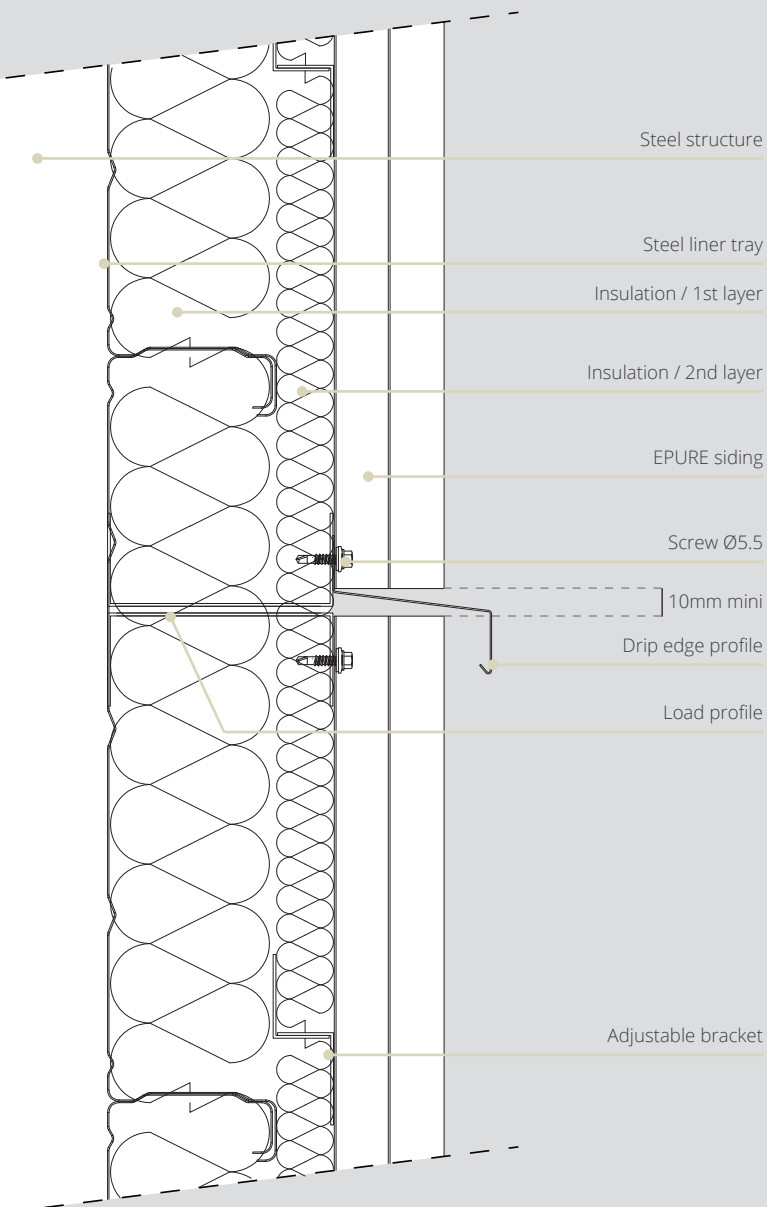


RENOVATING A BUILDING WITHOUT REMOVING THE EXISTING CLADDING

The flatness of the support is very important, it may be necessary to ensure that the frames are perfectly flat.

When installing the first siding, care should be taken to ensure that it is vertical, as this will determine the rest of the façade.

HORIZONTAL EXPANSION JOINT



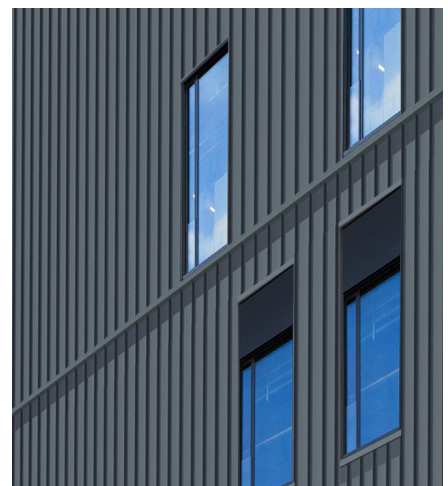
Dimensions EPURE sidings :

- Minimum length : 1000 mm
- Maximum length : 6000 mm

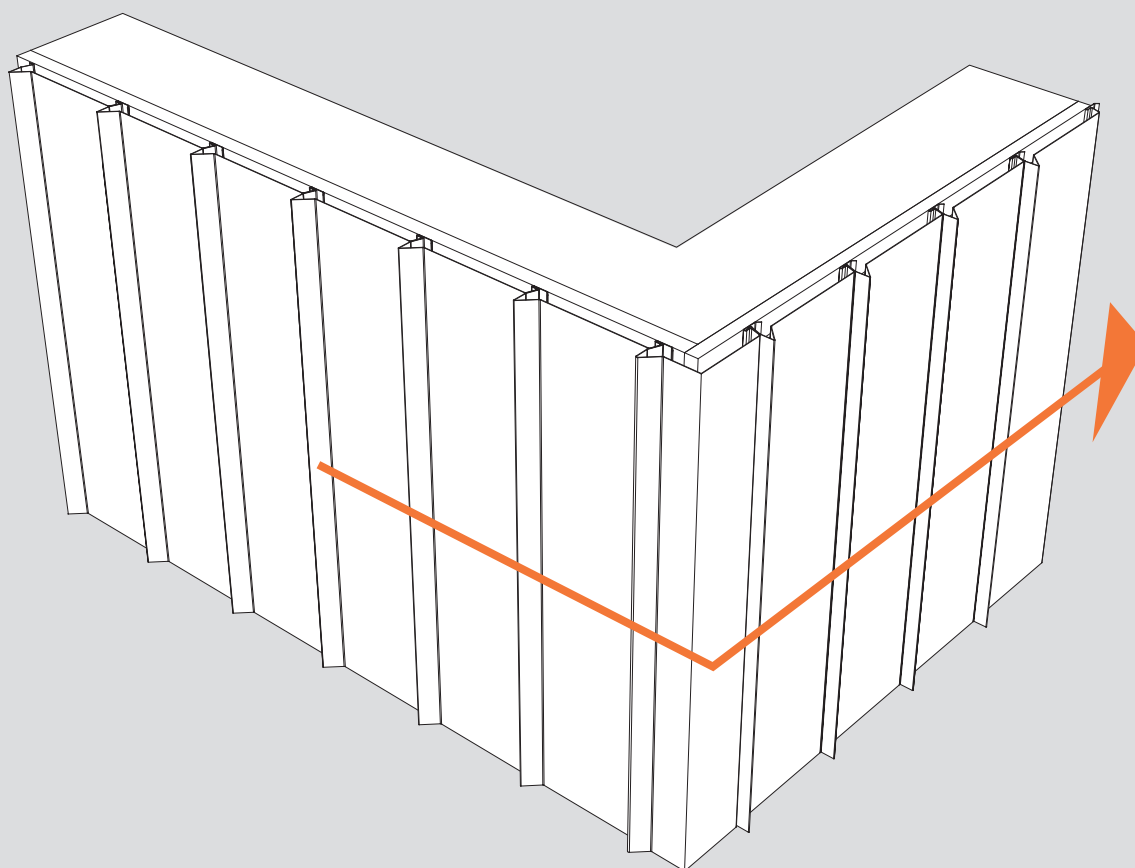
In the case of high facades, several sidings will be needed to cover the facade.

To ensure a watertight seal, it is advisable to use a drip-edge profile between each level.

Tip: This drip-edge profile can be used to play on the grids, by staggering the sidings from one level to the next.

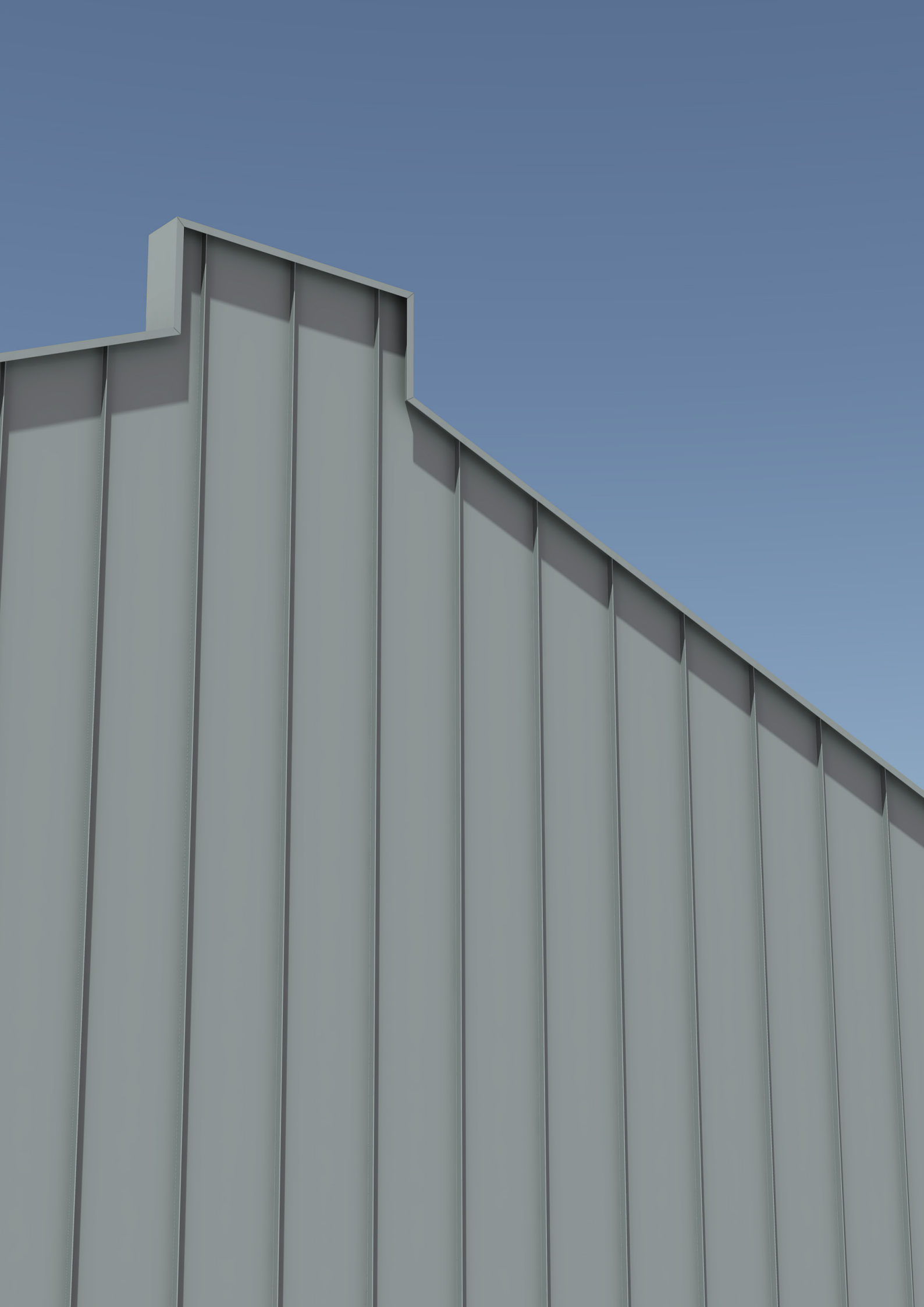


INSTALLATION DIRECTION



Whenever this does not conflict with prevailing wind calculations, it is strongly recommended that the sidings are installed with the same standing seam orientation from one façade to the next.

The regularity of the shadows cast will add aesthetic appeal to the project.



FINISHING PROFILES



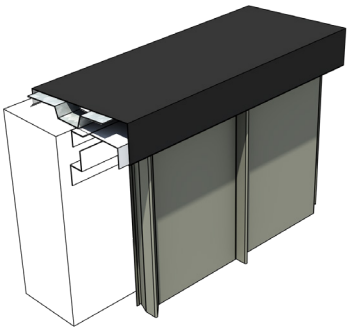
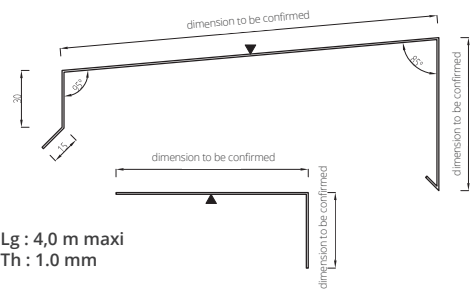
Beyond the aesthetic quality of its sidings, a successful metal facade requires precise and well-designed finishing profiles. ATELIERS 3S takes particular care to offer discreet elements that connect with the styles of the associated cladding.

In these pages, you'll find a selection of models that are fully adaptable to the actual dimensions of your project.

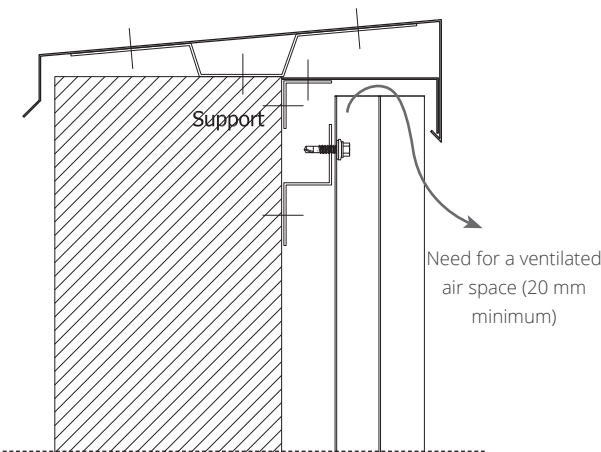
No matter how precise your installation is, **finishing profiles will always be custom-made elements.** Please don't hesitate to provide us with your exact dimensions and any other installation drawings.

FINISHING PROFILES

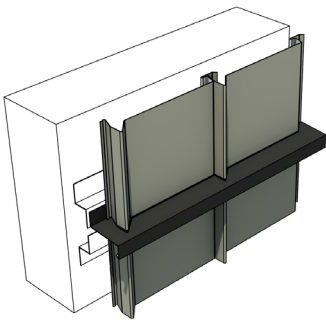
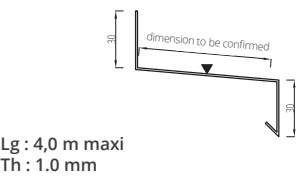
FACADE TOP



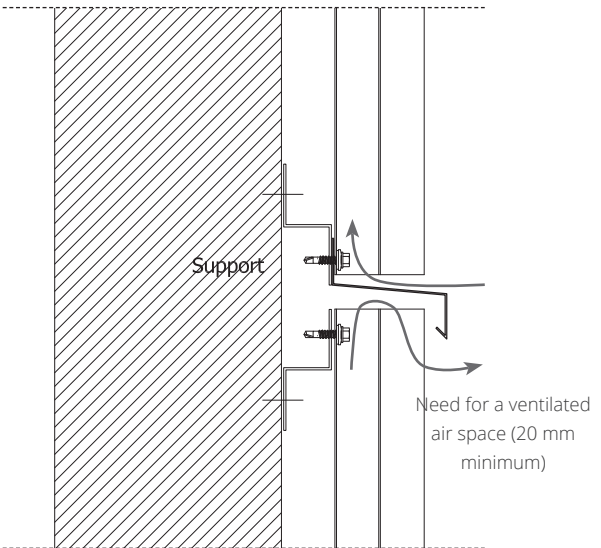
VERTICAL APPLICATION - COPING



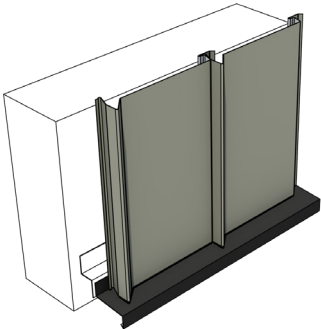
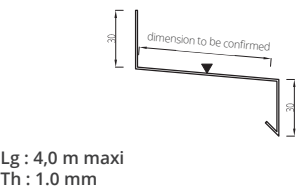
JUNCTION VERTICALE



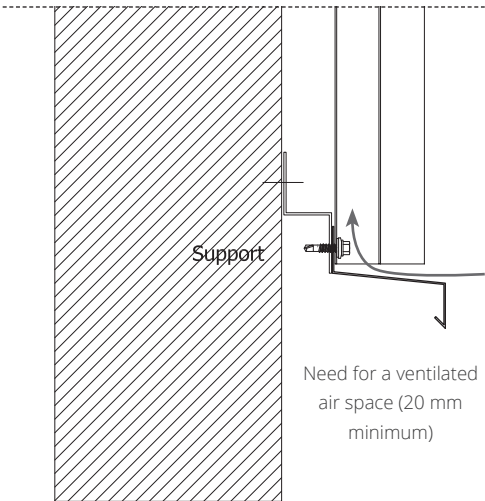
VERTICAL APPLICATION - DRIP EDGE



FACADE BOTTOM

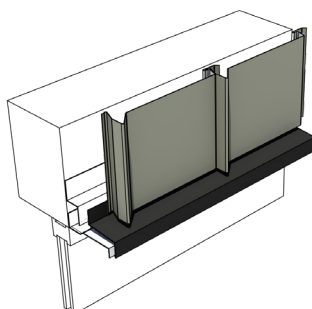
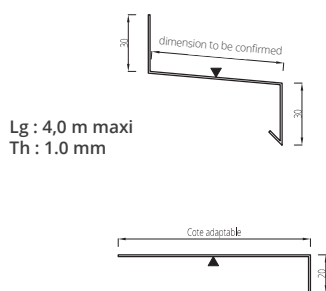


VERTICAL APPLICATION - DRIP EDGE

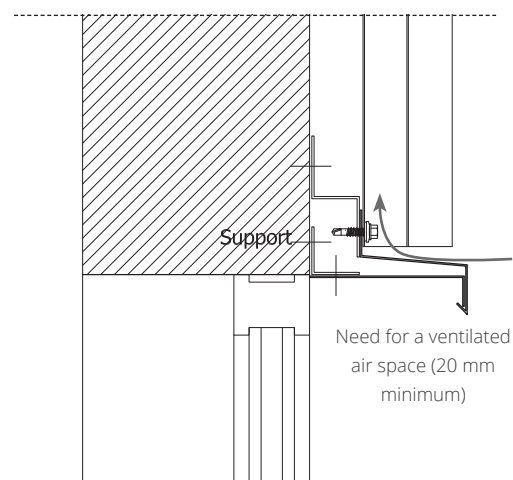


FINISHING PROFILES

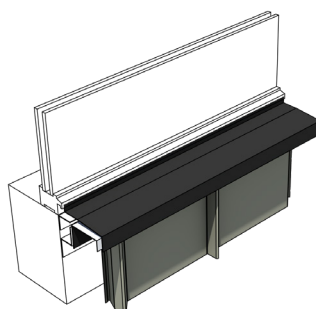
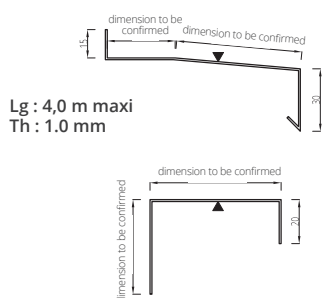
OPENING



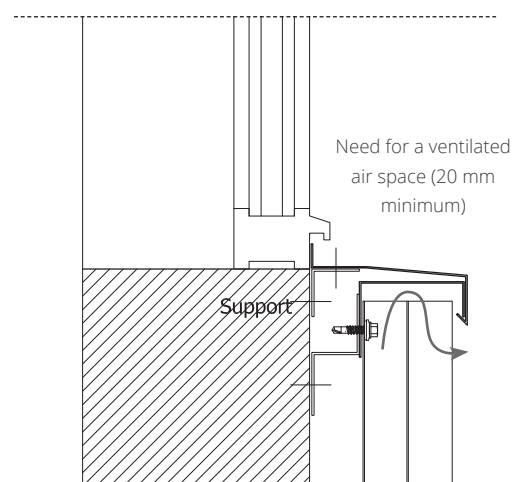
VERTICAL APPLICATION - LINTEL



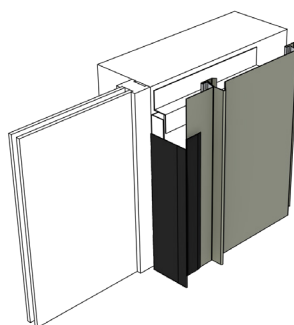
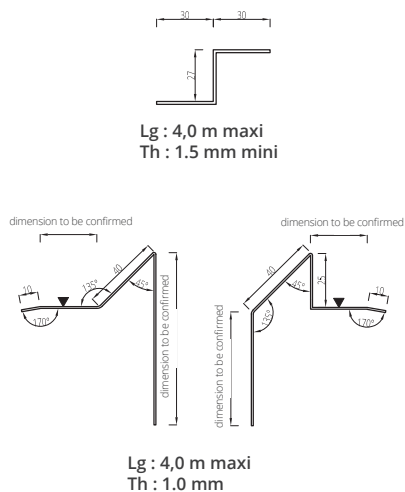
OPENING



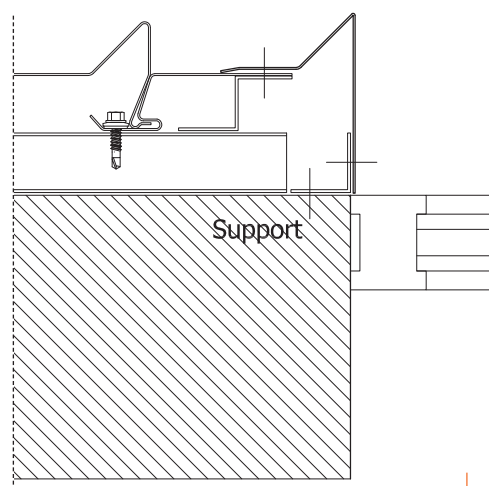
VERTICAL APPLICATION - SILL



OPENING

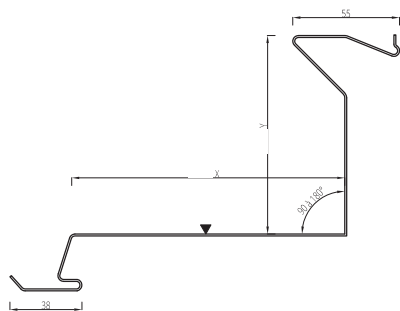


VERTICAL APPLICATION - JAMB

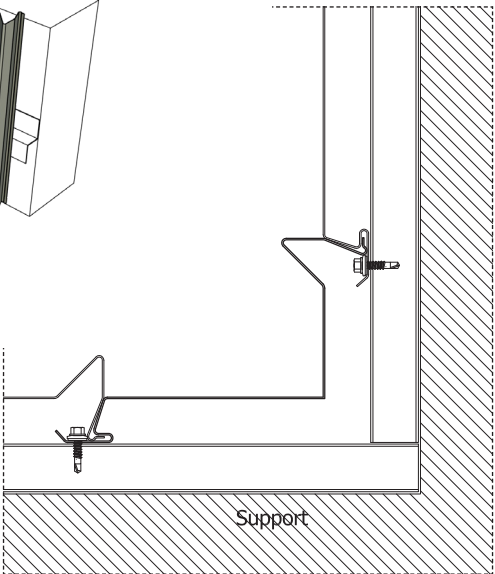
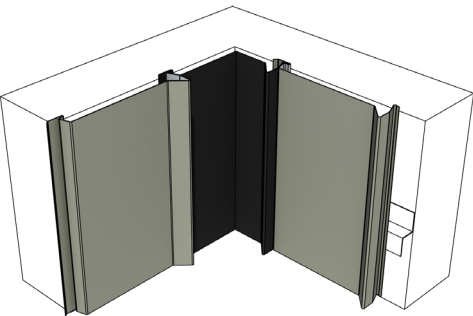


INSIDE CORNER

VERTICAL APPLICATION - FOLDED SIDING

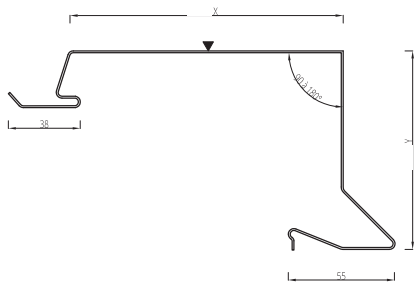


Lg : 4,0 m maxi et 1.1 m mini
IMPORTANT : X+Y=200 or 250 or 300 or 400mm
X ≥ 115mm
Y ≥ 60mm

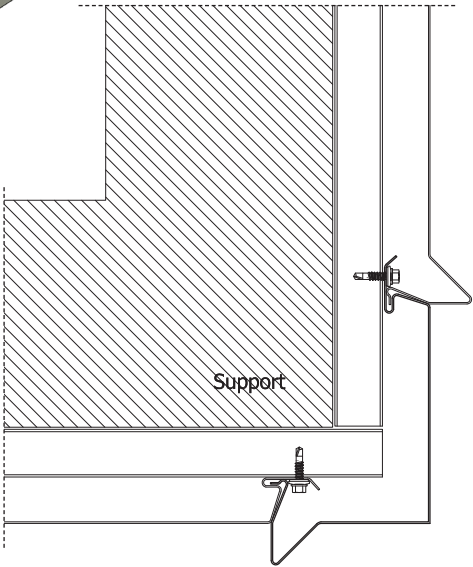
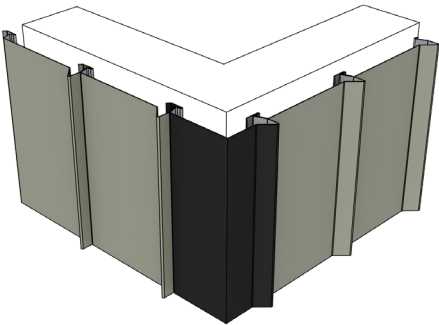


OUTSIDE CORNER

VERTICAL APPLICATION - FOLDED SIDING

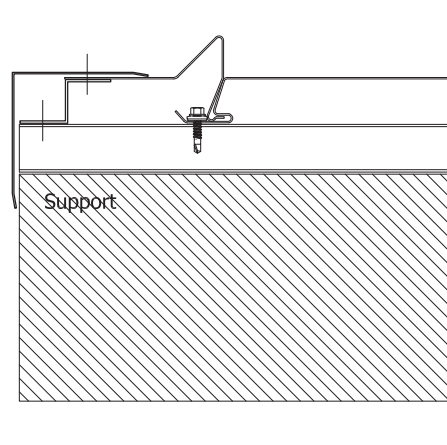
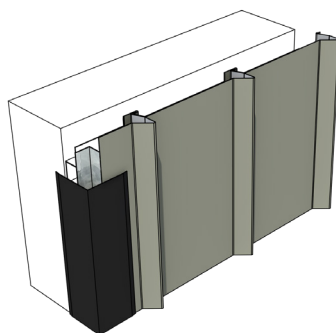
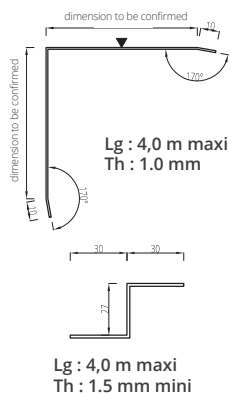


Lg : 4,0 m maxi et 1.1 Mini
Th : 1.0 mm
IMPORTANT : X+Y=200 or 250 or 300 or 400mm
X ≥ 115mm
Y ≥ 60mm



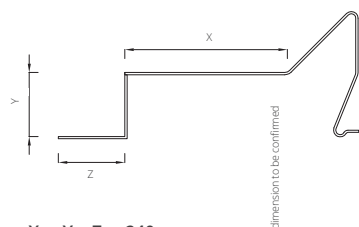
JUNCTION ON EXISTING WALL

VERTICAL APPLICATION - COVER



STARTING AND ENDING PROFILE

VERTICAL APPLICATION - FOLDED SHEET



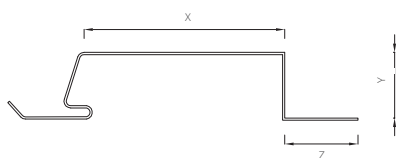
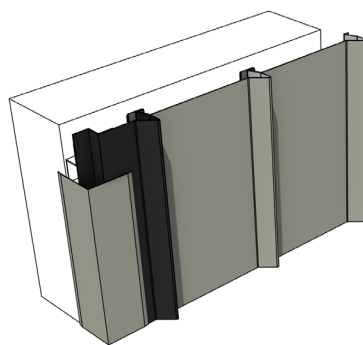
$$X + Y + Z = 240$$

X : mini 30

Y : siding height or adjustable

Z : mini 30

Lenght : mini 1000 / maxi 6000
Th : 1 mm



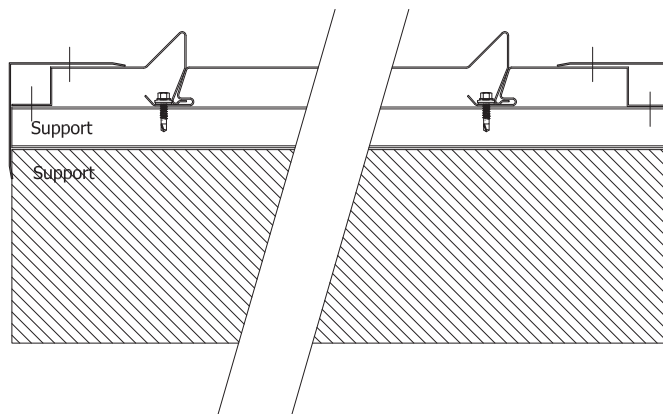
$$X + Y + Z = 270$$

X : mini 30

Y : siding height or adjustable

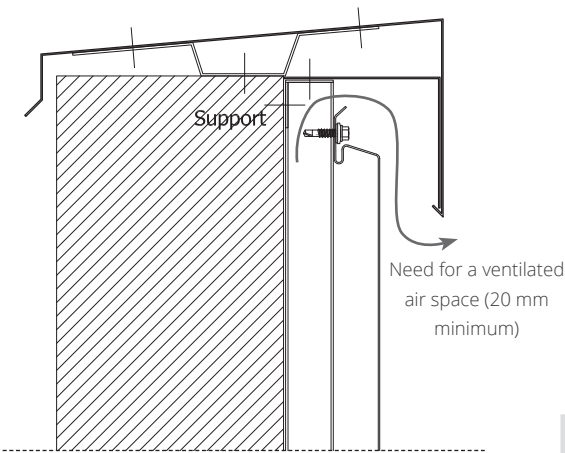
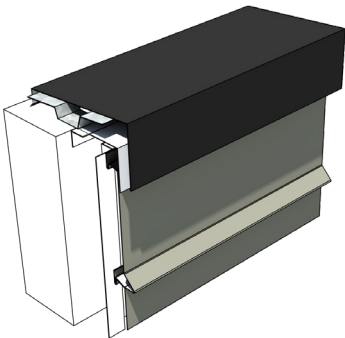
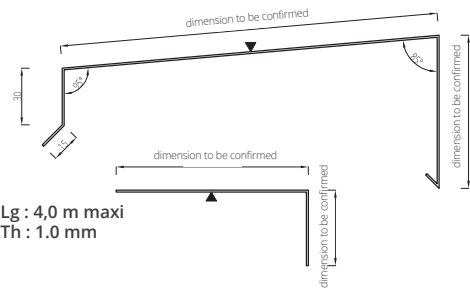
Z : mini 30

Lenght : mini 1000 / maxi 6000
Th : 1 mm



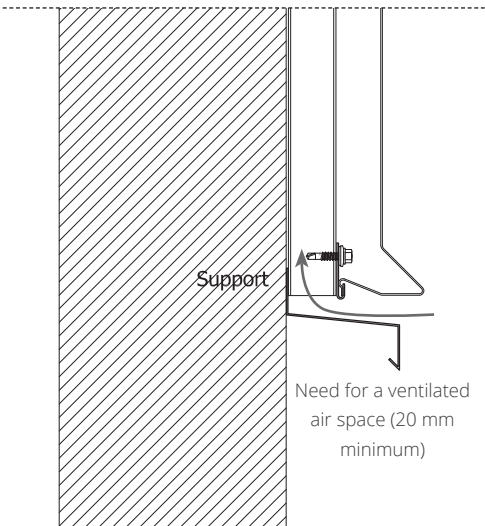
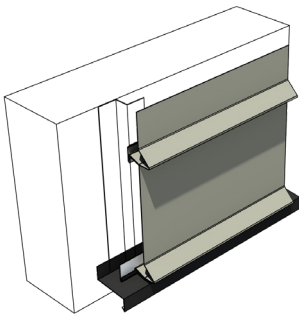
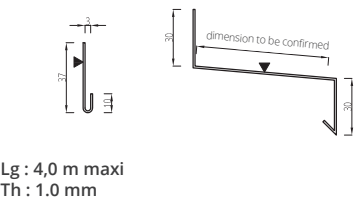
FACADE TOP

HORIZONTAL APPLICATION - COPING



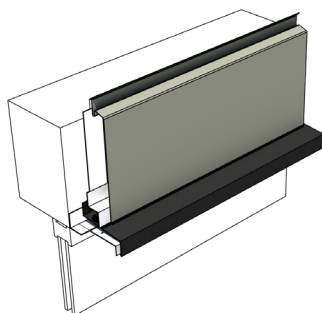
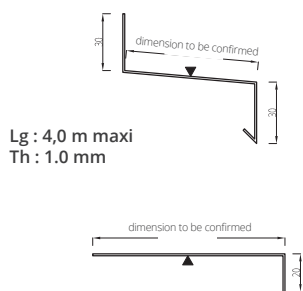
FACADE BOTTOM

HORIZONTAL APPLICATION - DRIP EDGE

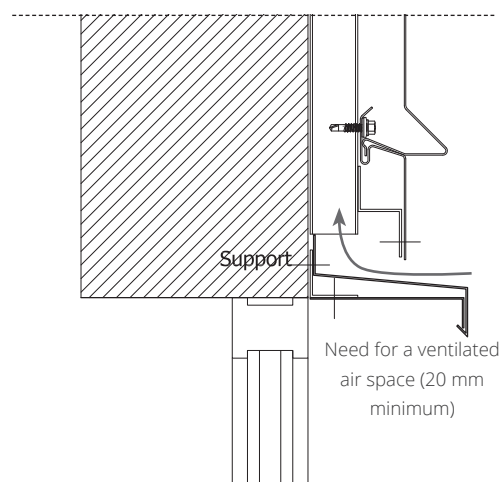


FINISHING PROFILES

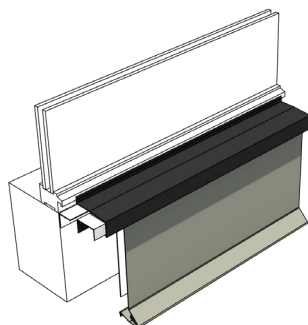
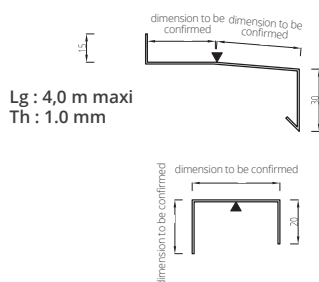
OPENING



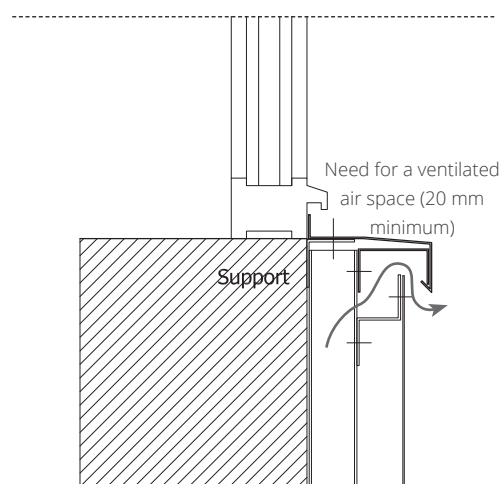
HORIZONTAL APPLICATION - LINTEL



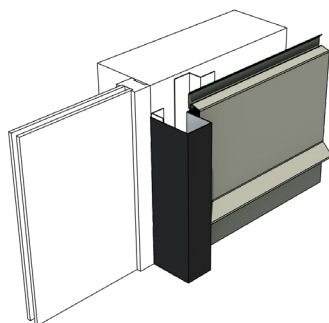
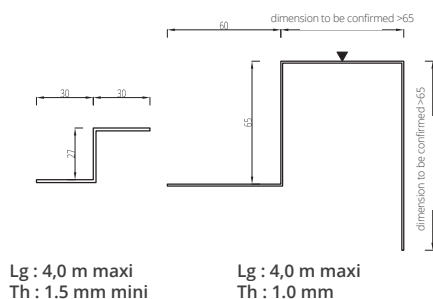
OPENING



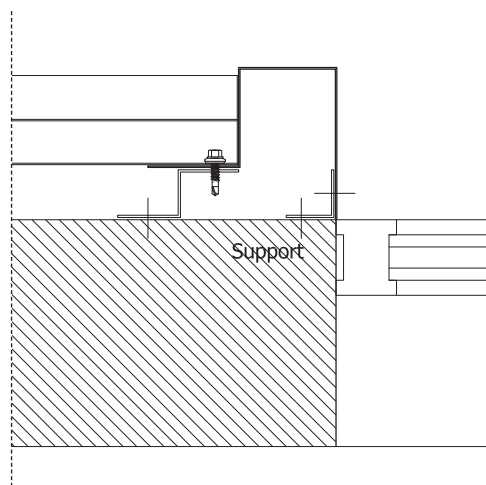
HORIZONTAL APPLICATION - SILL



OPENING

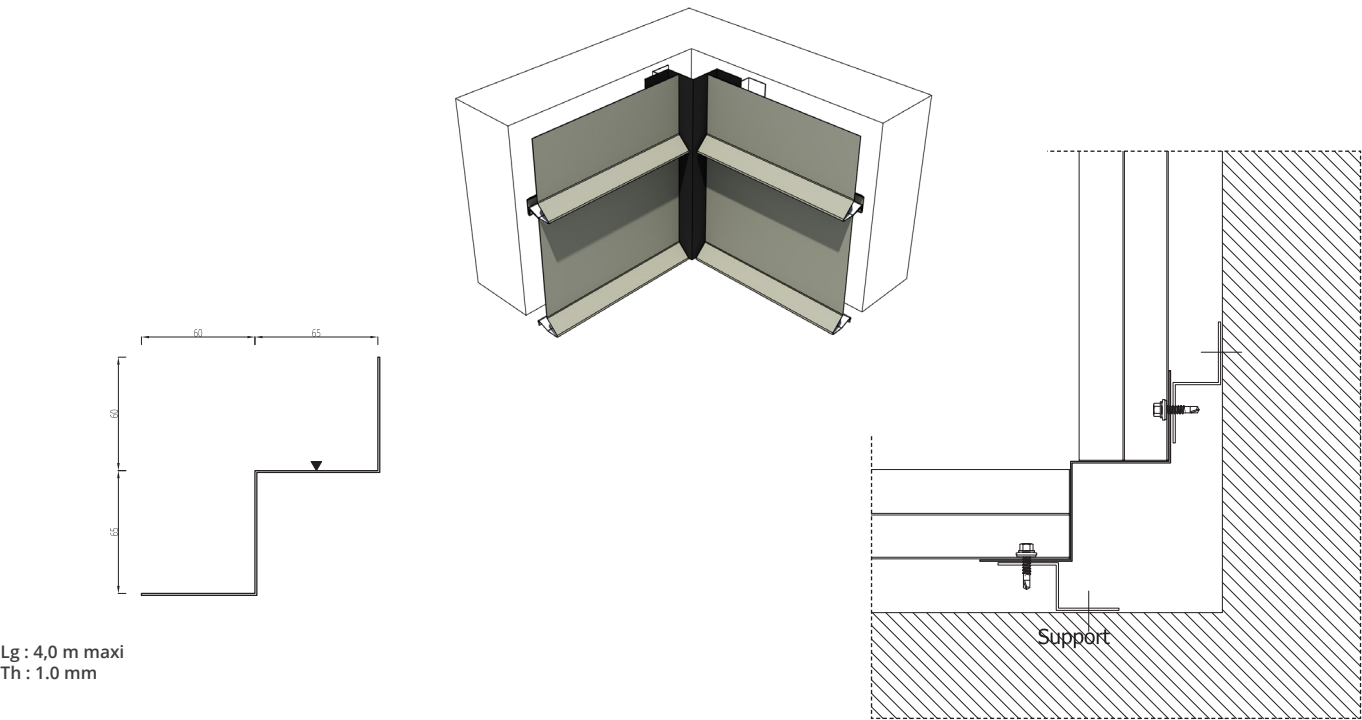


HORIZONTAL APPLICATION - JAMB



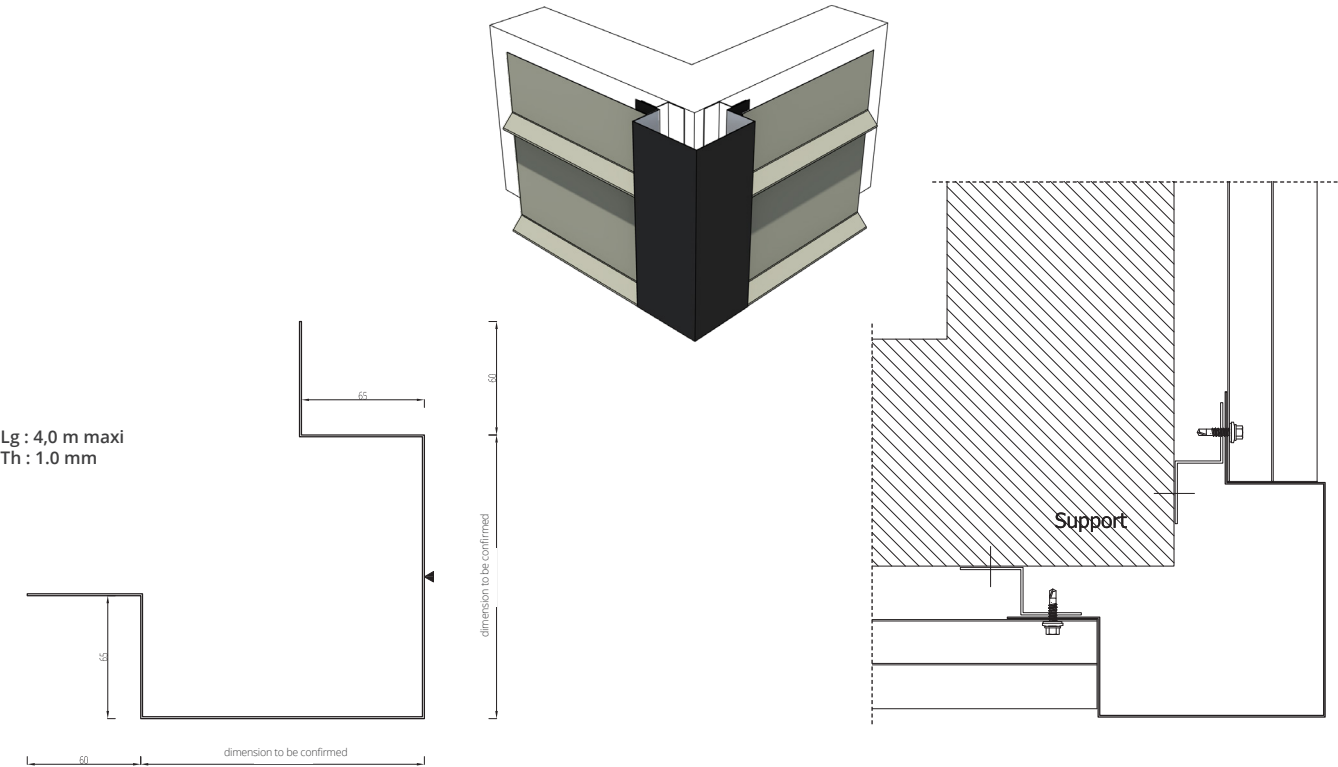
INSIDE CORNER

HORIZONTAL APPLICATION - INSIDE CORNER



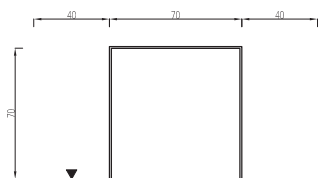
OUTSIDE CORNER

HORIZONTAL APPLICATION - OUTSIDE CORNER

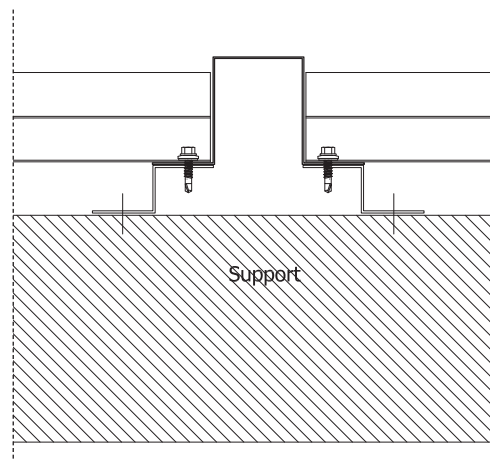
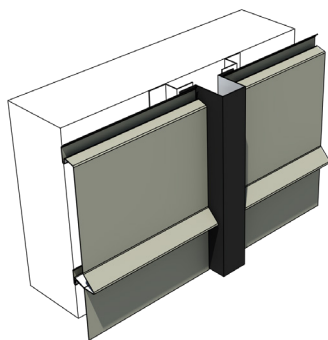


JUNCTION HORIZONTALE

HORIZONTAL APPLICATION - PIN JOINT



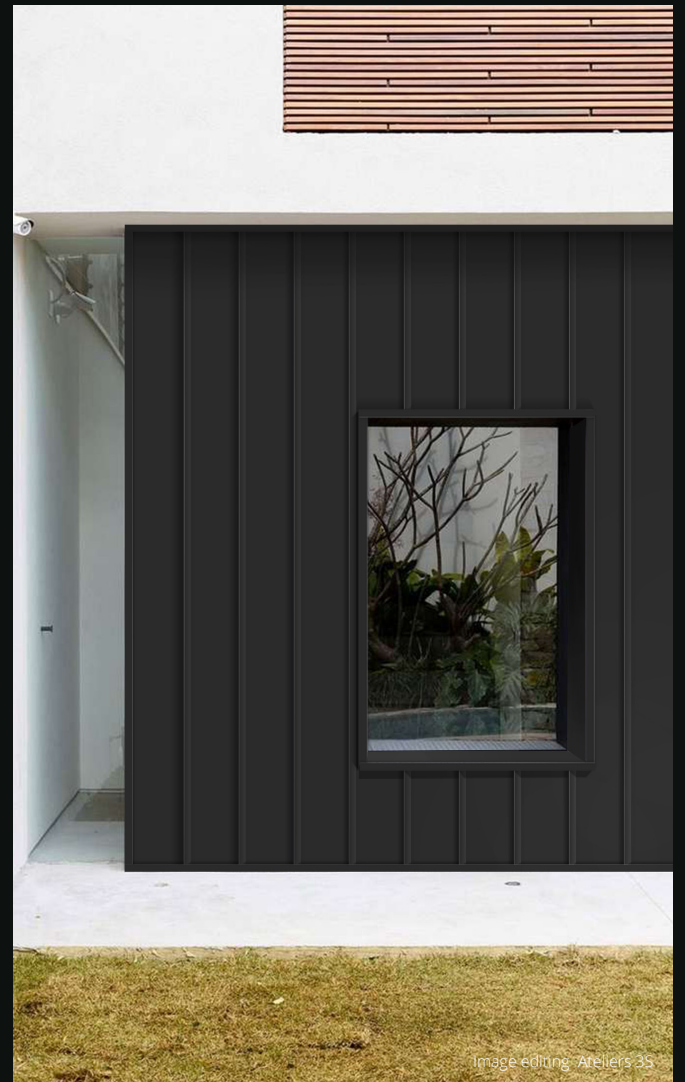
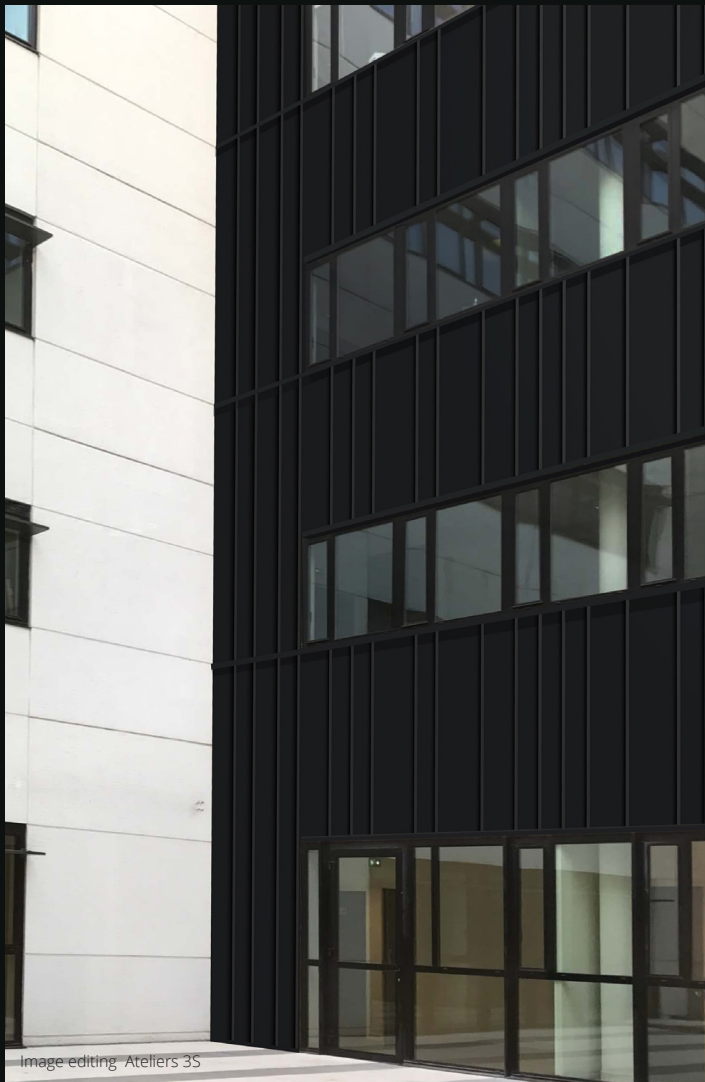
Lg : 4,0 m maxi
Th : 1.0 mm





PROJECTS GALLERY







Logements - La Bastide du Couchant- Saint Galmier



Logements - La Bastide du Couchant- Saint Galmier



Logements - La Bastide du Couchant- Saint Galmier



Clinique du Parc - Saint Priest en Jarez



Clinique du Parc - Saint Priest en Jarez



Cabinet ACF - Aubière - conception ARCHI 3A - C4S



COLOR CHART

Colours and materials **used**

ORIGINAL

Available in
0.75 mm

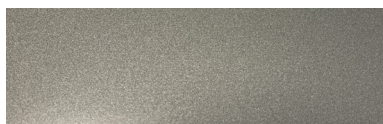
Exclusive, ultra resistant colours that meet the requirements of the 3S® range.

METALLIC



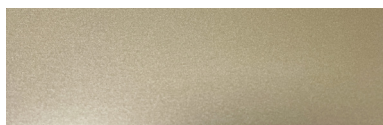
METAL 0207

35µm



PEARL 0208

35µm



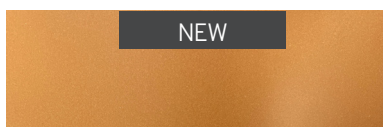
PLATINUM 0206

35µm



INTENSE GOLD 6995

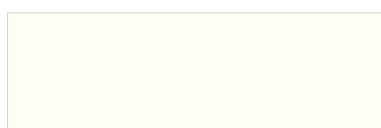
35µm



COPPER 0603

35µm

SATIN



COTTON 0201

35µm



RAL 5008 - OCEAN

35µm



DUVET 0202

35µm



RAL 7032 - SILEC GREY

25µm



POWDER 0203

35µm



RAL 7022 - EGGSHELL

35µm



RAL 7037

25µm



POP 0204

35µm



RAL 7016 - ANTHRACITE GREY

25µm



SPRING 0205

35µm



RAL 7021 - BLACK GREY

25µm



RAL 9005 - DEEP BLACK

25µm



Please contact us for further information on our RAL colour chart and our special custom-designed textured coatings.

Colours and materials **used**

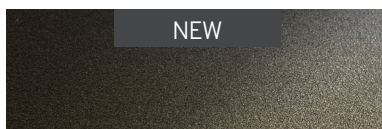
MATERIALS

Coatings that are as fabulous as the materials.

Available in
0.75 mm



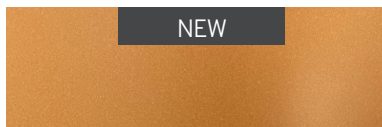
OXYDE 0602 35µm



DARK BRONZE 0604 50µm



INTENSE GOLD 6995 35µm

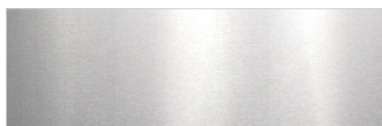


COPPER 0603 35µm

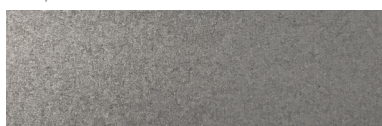
ROUGH

Reveal the nobility of raw materials.

Available in
0.75 mm



STAINLESS STEEL 0302
Shiny

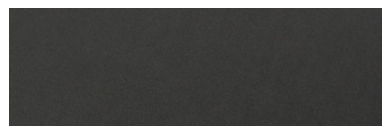


SURFACE GRAIN 0301
Galvanized steel with high-precision grain

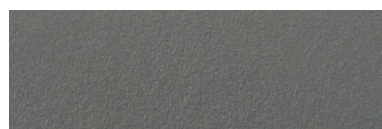
ZINC SPIRIT

Deep matte and very fine texture for a true-to-life zinc effect.

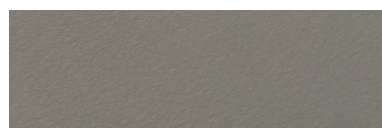
Available in
1.00 - 0.75 mm



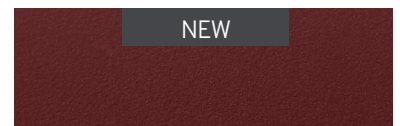
NERRO 0104 50µm



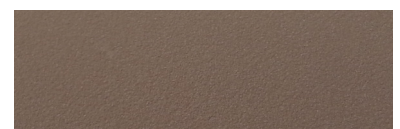
GALEO 0103 50µm



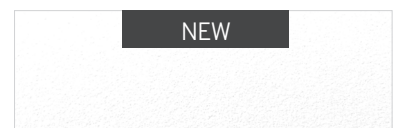
AZURO 0102 50µm



VINO 0106 50µm



VOLCANO 0101 50µm

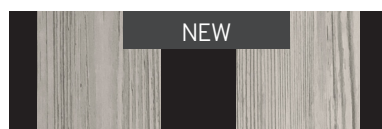


BIANCO 0105 50µm

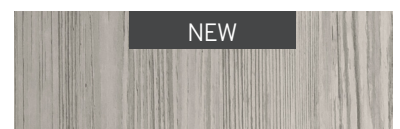
ONWOOD

True-to-life matte wood texture. Available in all wood finish or with optional black strips "Colorigami® Process".

Available in
0.75 mm



SILVER TECK (BLACK BANDS) 0409 47µm



SILVER TECK (ALL WOOD) 0408 47µm



NATURAL OAK (BLACK BANDS) 0406 47µm
Also available in 0.63 mm
0416 (MINI)
0426 (MAXI)



NATURAL OAK (ALL WOOD) 0403 47µm



HAZELNUT OAK (BLACK BANDS) 0405 47µm



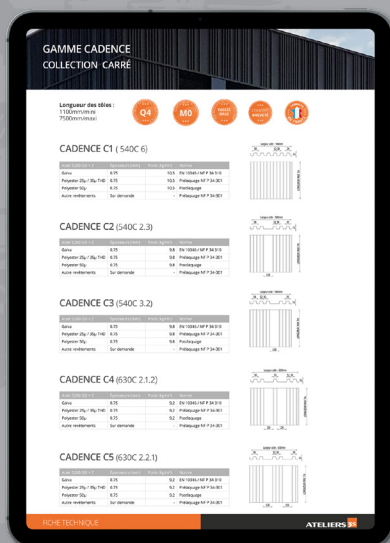
HAZELNUT OAK (ALL WOOD) 0402 47µm



COFFEE OAK (BLACK BANDS) 0407 47µm



COFFEE OAK (ALL WOOD) 0404 47µm



- TECHNICAL DATASHEETS
- INSTALLATION INSTRUCTIONS
- GUIDES TO FINISHING FOLDS
- CCTP (SPECIAL TECHNICAL SPECIFICATIONS)
- FILES DWG, BIM, SKETCHUP
- ETC.

Find us at:
www.ateliers3s.com



SCREWIT OUR SHOWROOM

100 AVENUE DAUMESNIL 75012 PARIS - FRANCE

GRUPE



FIMAVI

E P U R E 2 0 2 5

ATELIERS 
metal cladding creators

Rue verte, ZI Ladoux - F-63118 Cébazat - France
T. +33(0)4 73 88 59 50
contact@ateliers3s.com - www.ateliers3s.com

02/07/2025