



NEW YORK

FACADES REACH FOR THE SKY

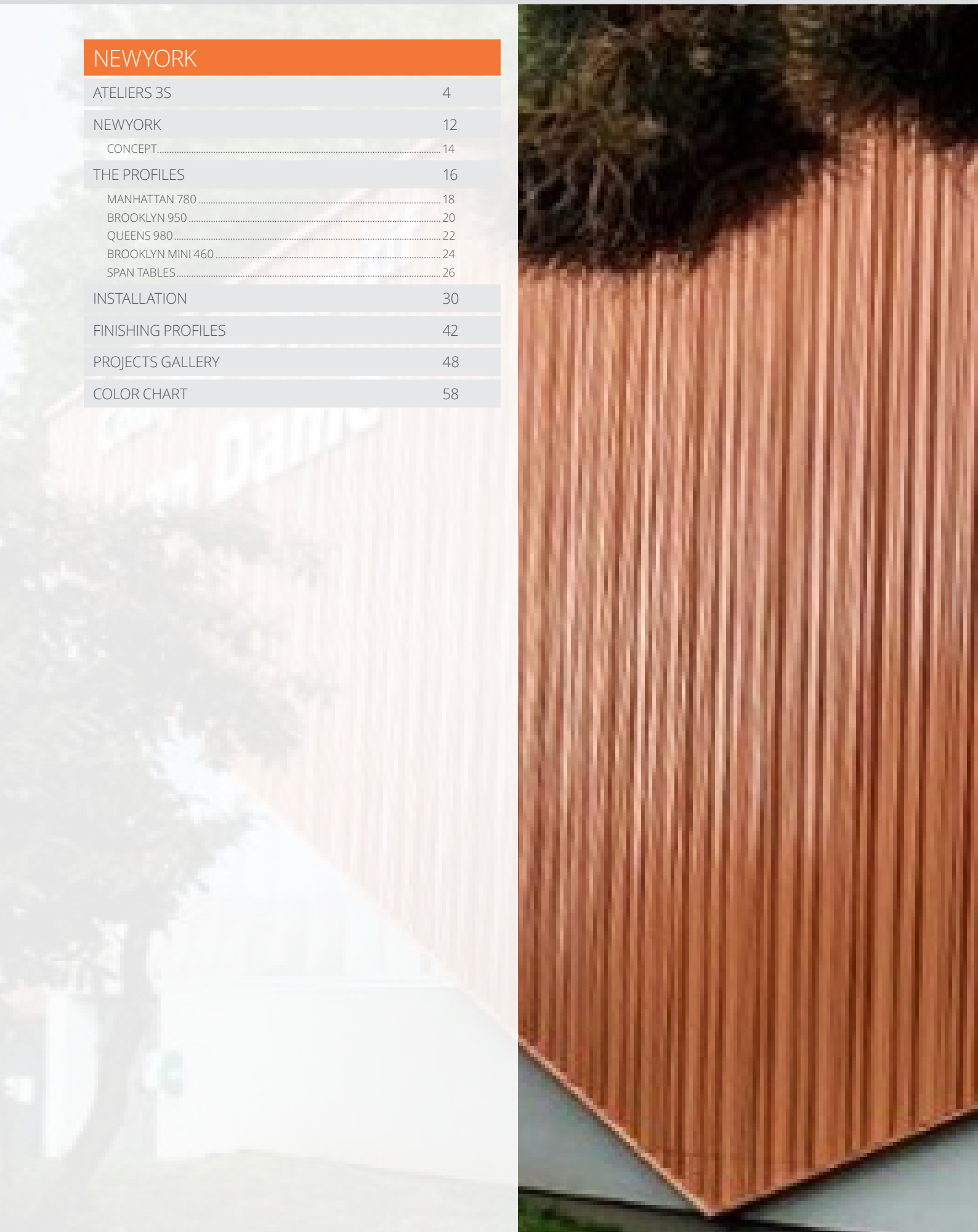


Complexe Sportif
en Dame

SUMMARY

NEWYORK

| | |
|-------------------------|----|
| ATELIERS 3S | 4 |
| NEWYORK | 12 |
| CONCEPT..... | 14 |
| THE PROFILES | 16 |
| MANHATTAN 780 | 18 |
| BROOKLYN 950 | 20 |
| QUEENS 980..... | 22 |
| BROOKLYN MINI 460 | 24 |
| SPAN TABLES..... | 26 |
| INSTALLATION | 30 |
| FINISHING PROFILES | 42 |
| PROJECTS GALLERY | 48 |
| COLOR CHART | 58 |



THE LATEST ENTRANT

ATELIERS 

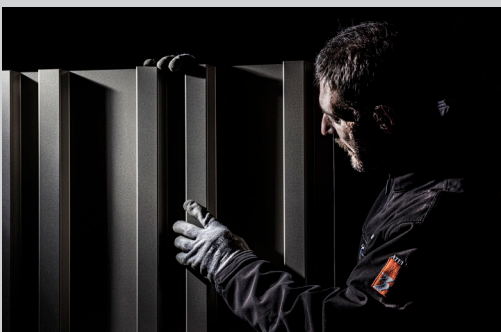
How is it that the latest company in the field of metal cladding has taken less than 10 years to shape its market?

“

You're familiar with the following universal theory; everyone can identify with it: one of the great enemies of humankind – of our human way of thinking – *is habit*.

The habit of **thinking within a certain framework** not because we have established it ourselves, but just because it is there, locking us into an ultimately comfortable standard process: Thinking like Mr. Average.

Our story perfectly embodies how to buck this trend: we are the latest entrant to the French metal cladding market. Despite being the most recently established company, in just over 10 years, we have built a reputation that is unrivalled in the sector, consistently outpacing the competition with our original and desirable designs; **our influence is clearly unrelated to our economic weight**.



10 YEARS

OF FIRSTS

IMPACT

- first to reinvent the aesthetics of metal clad buildings
- first to bring steel cladding into towns and cities
- first to offer a 30-year warranty
- first to invent a random facade
- first to offer low carbon steel as standard
- first selective lacquering of a pre-painted coil



IMPACT DESIGN



We have pushed back the boundaries and brought steel cladding **into cities and towns**. Offices, apartment blocks, interior design – a significant part of our business is generated by projects outside industrial buildings; steel cladding is now considered a desirable element.

We have consulted architects, builders, artisans and contractors. Together, we have radically changed the scene in just a few years. Ateliers 3S impacts on its market in terms both of building aesthetics and environmental concerns, and is creatively liberating.

This positive impact becomes yours also. It is encoded in your buildings. **Permanently.**”



IMPACT CLIMAT

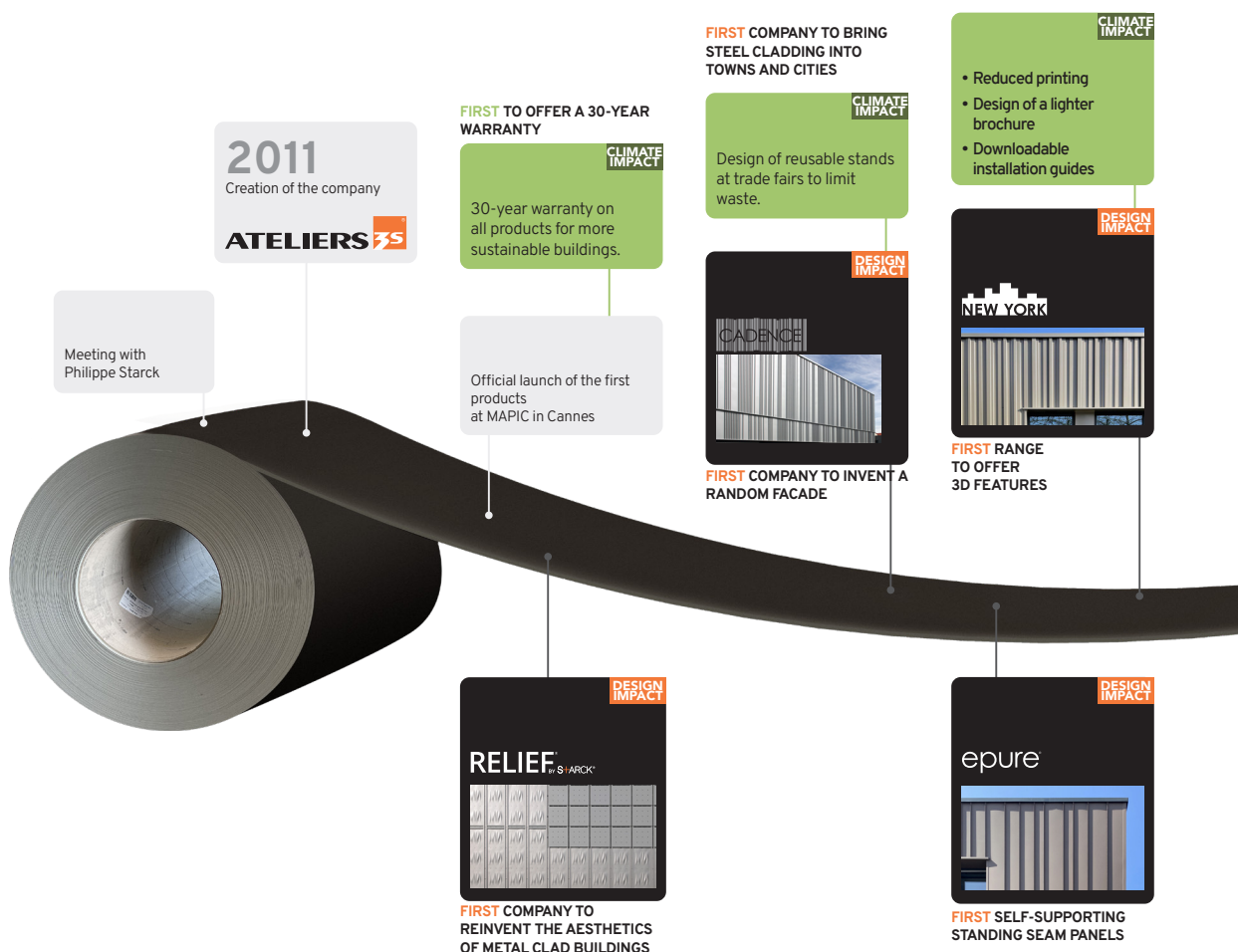


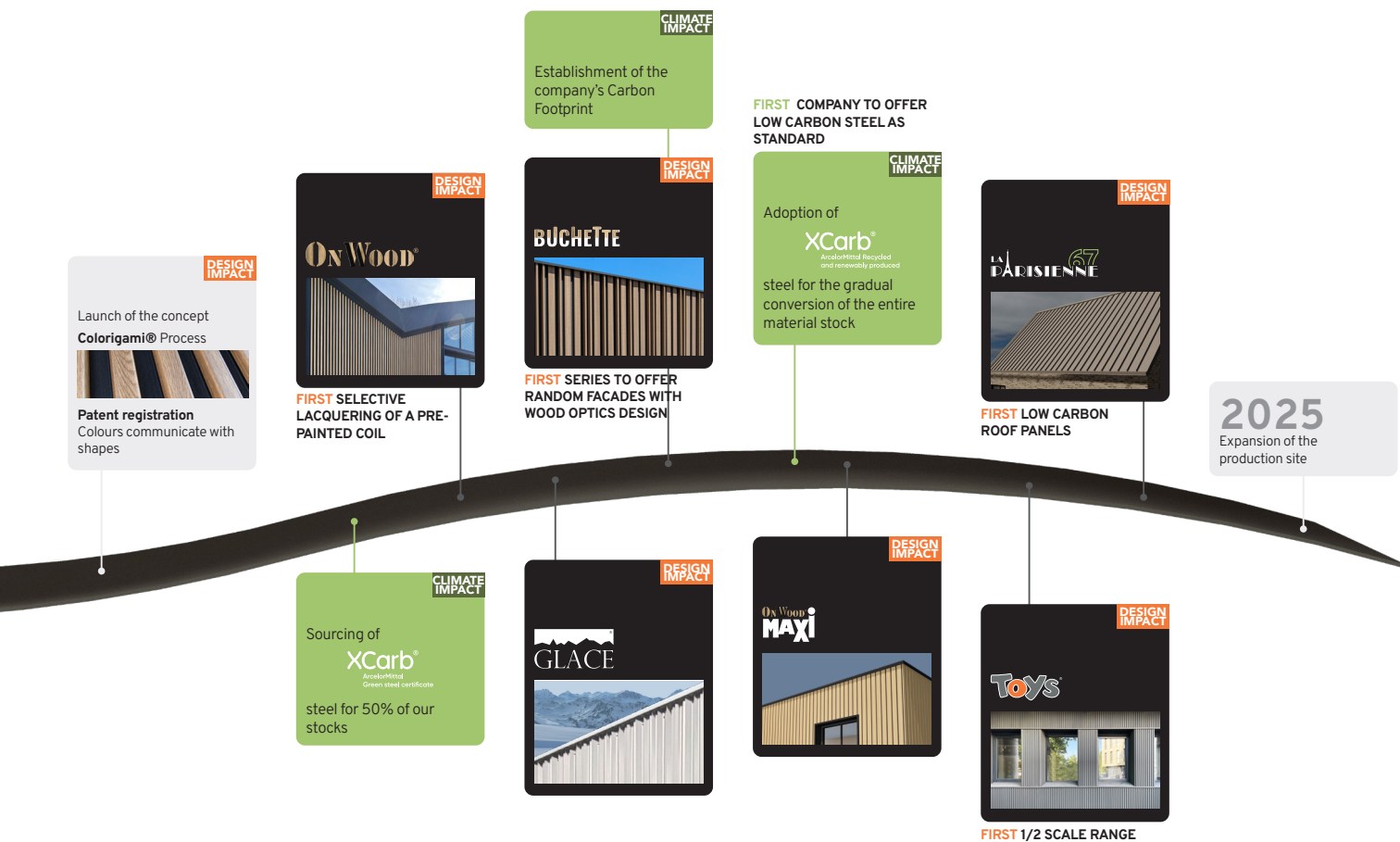
Our **30-year warranty** – ensuring that our products last three times longer – was our first step in an eco-friendly approach to sustainability and economy. However, while steel can be recycled repeatedly, the recyclable volume currently available is only sufficient to meet a quarter of global demand. The future therefore lies in low carbon steel.

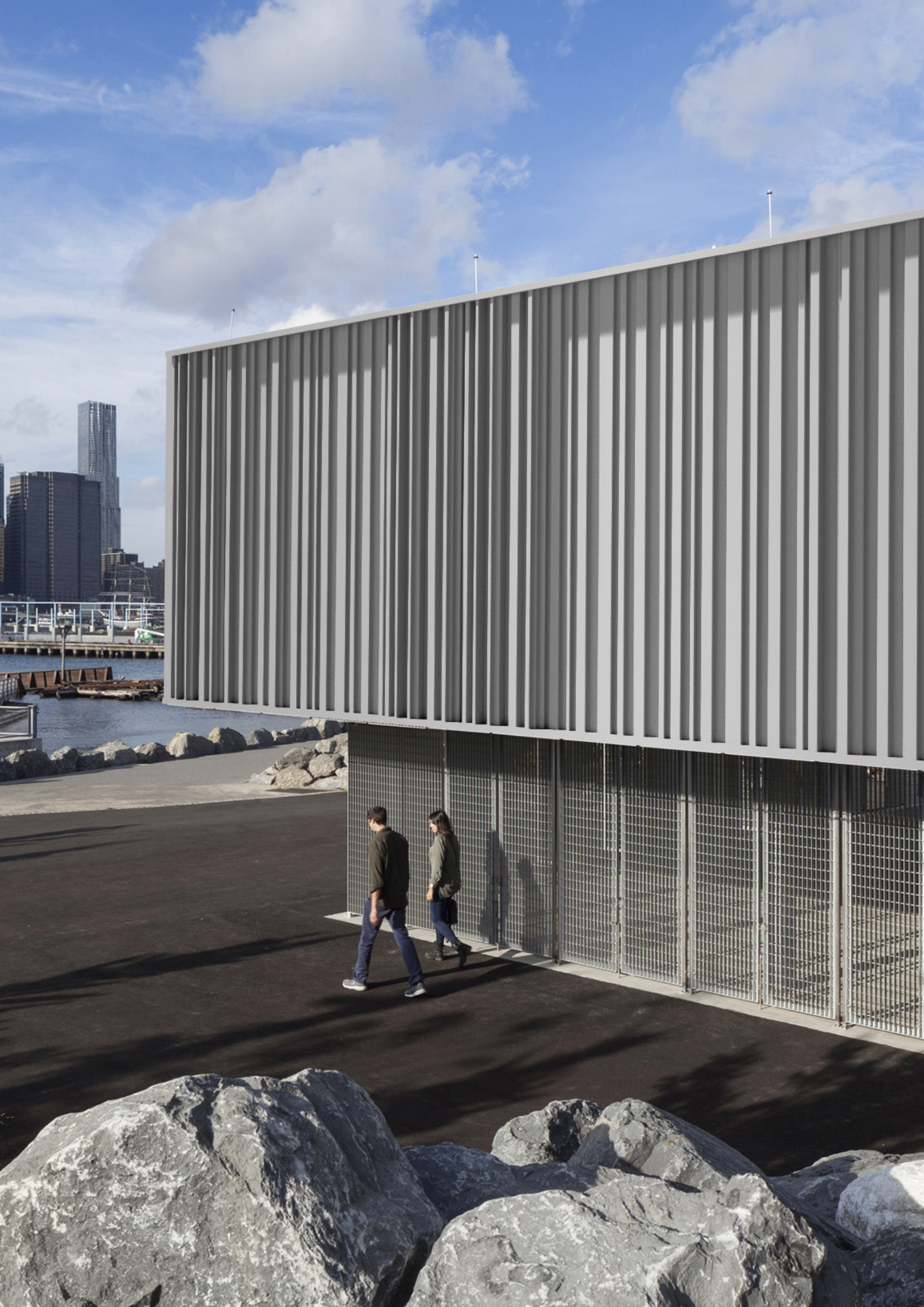
As of 2024, we are the first company to offer the new low carbon steel as standard. Climate concerns are not an option; by anticipating that the carbon footprint of any building will be a determining factor in its construction, we are offering our customers the opportunity to be in phase with future trends.”

OUR

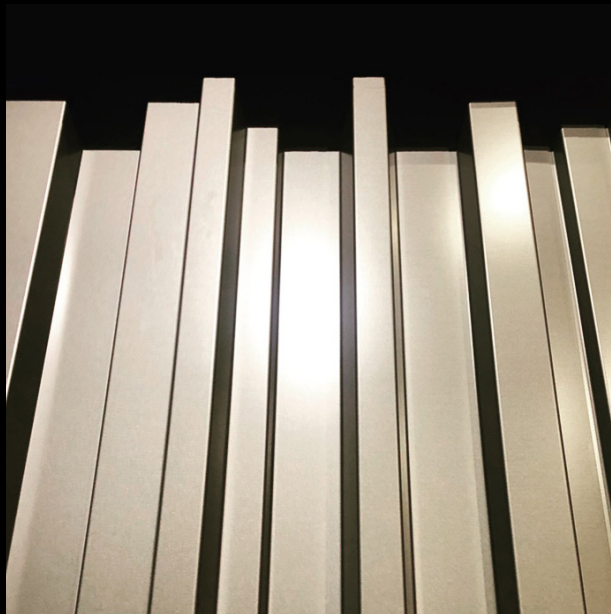
HISTORY







NEW YORK



GAMME RANGE

NEW YORK

Facades reach for the sky

Conquering the 3rd dimension!

Like the famous skyline, for the first time, the NEW YORK range plays with rib depth, letting the shadows do the work. The profiles of these visually impressive designs offer three unique signatures and, above all, provide an endless number of combinations.

MANHATTAN



BROOKLYN



QUEENS



3 Profiles = 3 QUARTERS



Always very easy to install

Designed according to traditional steel cladding installation rules, NEW YORK panels are as easy to install as a classical profile. New or renovation, they adapt naturally to all types of systems and projects.



THE PROFILES

MANHATTAN 780



PROFILE MANHATTAN 780

| Material | Thickness (mm) | Weight (kg/m ²) |
|----------------------|----------------|-----------------------------|
| Steel S280 GD + Z275 | 0.75 | 9.40 |

| Coating | Norm |
|--------------------|-----------------------|
| Hot dip Galvanized | NF EN 10346 |
| Polyester 35μ THD | Coil coating EN 10169 |
| Polyurethane 50μ | Coil coating EN 10169 |
| Post-coating 60μ | |
| Other coating | Upon request |

Profile height : 60 mm

Sheets length : 8000mm maximum

REGISTERED
DESIGNS

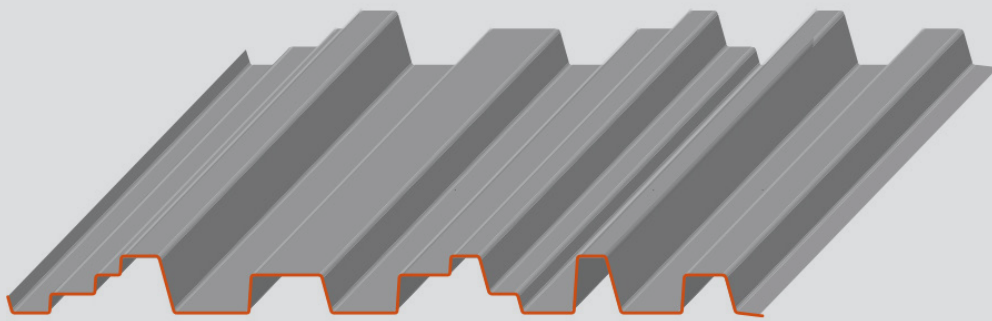
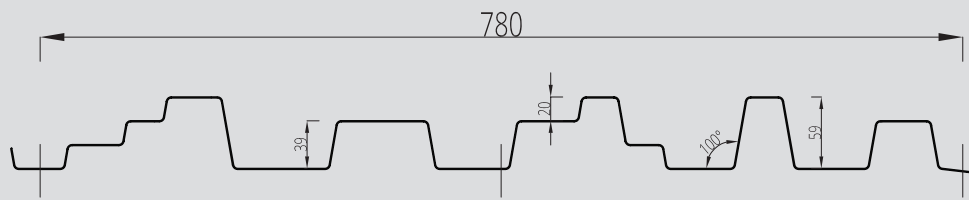
30-YEAR WARRANTY
FIRE : A1
IMPACT : Q4

TRADITIONAL
INSTALLATION
METHOD

MADE IN FRANCE

DWG, BIM,
SKETCHUP FILES
TO DOWNLOAD
ON OUR WEBSITE

MANHATTAN 780



BROOKLYN 950



PROFILE BROOKLYN 950

| Material | Thickness (mm) | Weight (kg/m ²) |
|----------------------|----------------|-----------------------------|
| Steel S280 GD + Z275 | 0.75 | 7.71 |

| Coating | Norm |
|--------------------|-----------------------|
| Hot dip Galvanized | NF EN 10346 |
| Polyester 35μ THD | Coil coating EN 10169 |
| Polyurethane 50μ | Coil coating EN 10169 |
| Post-coating 60μ | |
| Other coating | Upon request |

Profile height : 40 mm

Sheets length : 8000mm maximum

REGISTERED
DESIGNS

30-YEAR WARRANTY

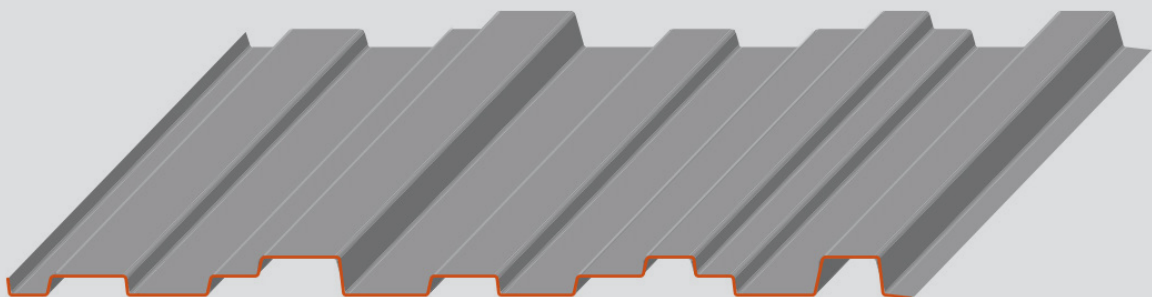
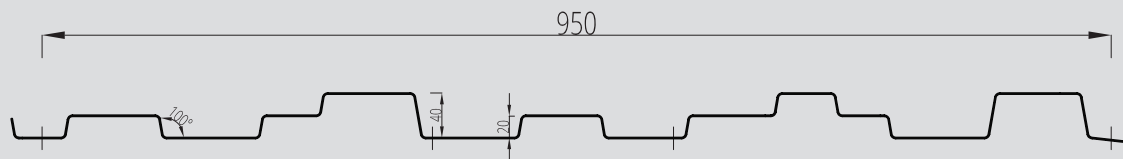
FIRE : A1
IMPACT : Q4

TRADITIONAL
INSTALLATION
METHOD

MADE IN FRANCE

DWG, BIM,
SKETCHUP FILES
TO DOWNLOAD
ON OUR WEBSITE

BROOKLYN 950



QUEENS 980



PROFILE QUEENS 980

| Material | Thickness (mm) | Weight (kg/m ²) |
|----------------------|----------------|-----------------------------|
| Steel S280 GD + Z275 | 0.75 | 7.48 |

| Coating | Norm |
|--------------------|-----------------------|
| Hot dip Galvanized | NF EN 10346 |
| Polyester 35μ THD | Coil coating EN 10169 |
| Polyurethane 50μ | Coil coating EN 10169 |
| Post-coating 60μ | |
| Other coating | Upon request |

Profile height : 20 mm

Sheets length : 8000mm maximum

REGISTERED
DESIGNS

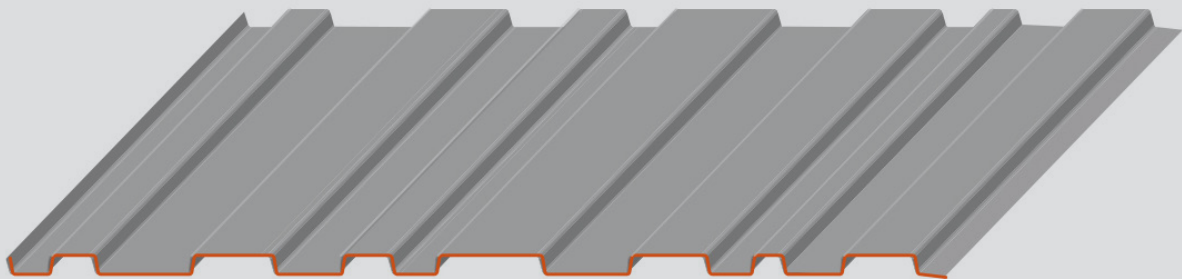
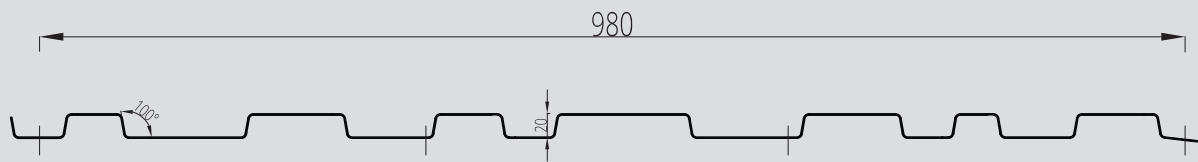
30-YEAR WARRANTY
FIRE : A1
IMPACT : Q4

TRADITIONAL
INSTALLATION
METHOD

MADE IN FRANCE

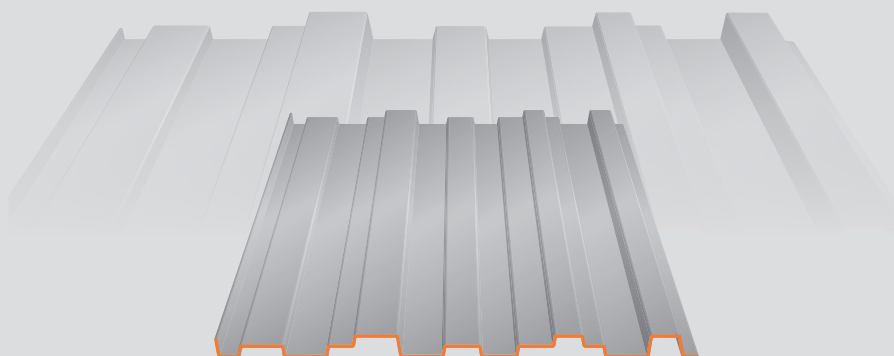
DWG, BIM,
SKETCHUP FILES
TO DOWNLOAD
ON OUR WEBSITE

QUEENS 980



BROOKLYN **MINI** 460

Toys

THE WOLRD OF  AT **1/2** SCALE**PROFILE BROOKLYN MINI 460**

| Material | Thickness (mm) | Weight (kg/m ²) |
|----------------------|----------------|-----------------------------|
| Steel S280 GD + Z275 | 0.63 | 6.50 |

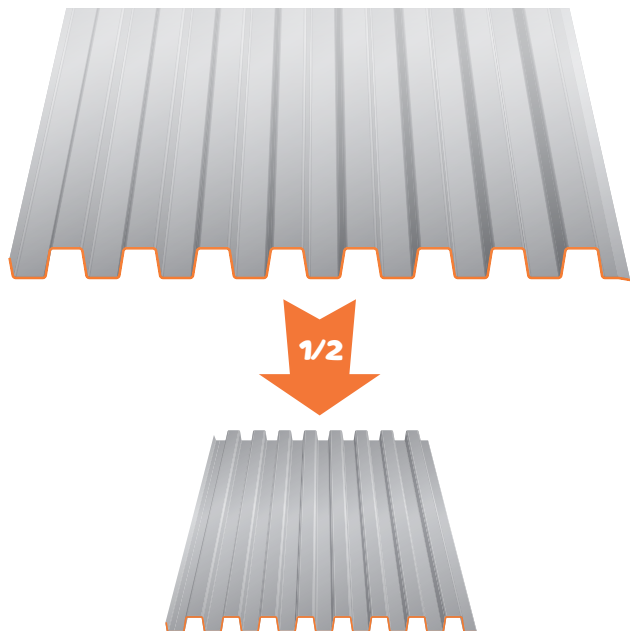
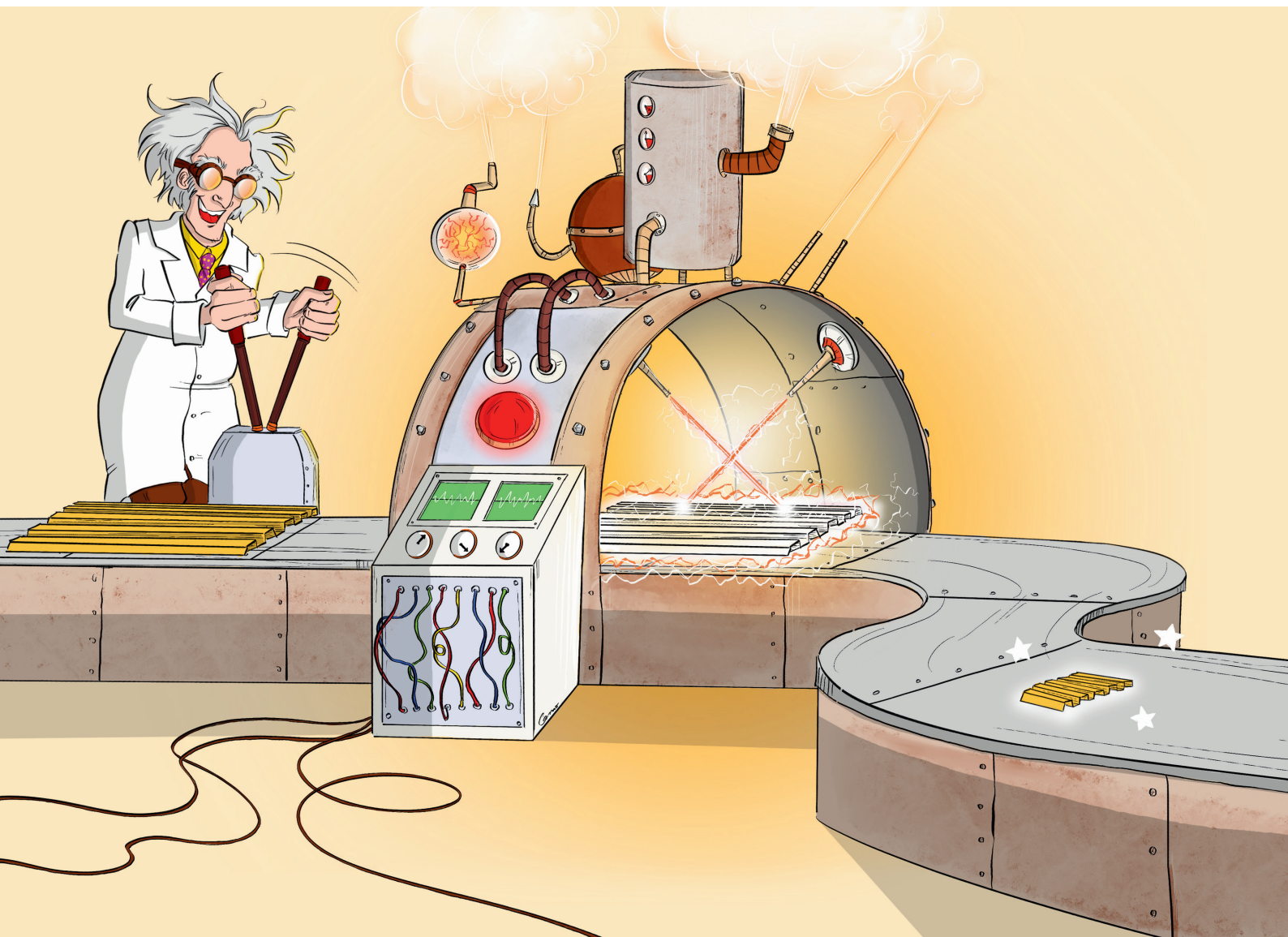
| Coating | Norm |
|--------------------|-----------------------|
| Hot dip Galvanized | NF EN 10346 |
| Polyester 35μ THD | Coil coating EN 10169 |
| Polyurethane 50μ | Coil coating EN 10169 |
| Post-coating 60μ | |
| Other coating | Upon request |

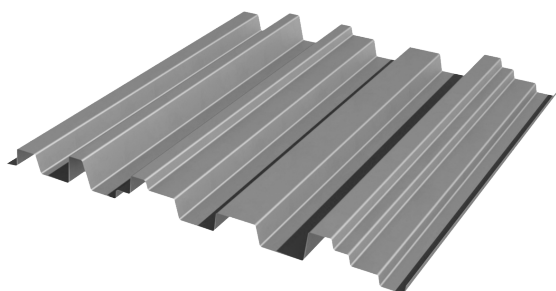
Profile height : 20 mm**Sheets length :** 6000mm maximumREGISTERED
DESIGNS30-YEAR WARRANTY
FIRE : A1
IMPACT : Q4TRADITIONAL
INSTALLATION
METHOD

MADE IN FRANCE

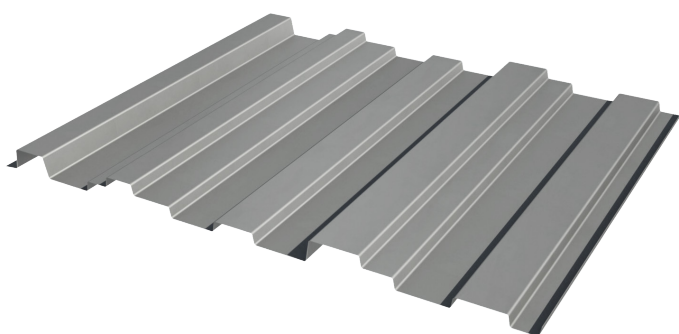
DWG, BIM,
SKETCHUP FILES
TO DOWNLOAD
ON OUR WEBSITE

OUR ICONIC PROFILES SCALED DOWN TO **Mini**[®]

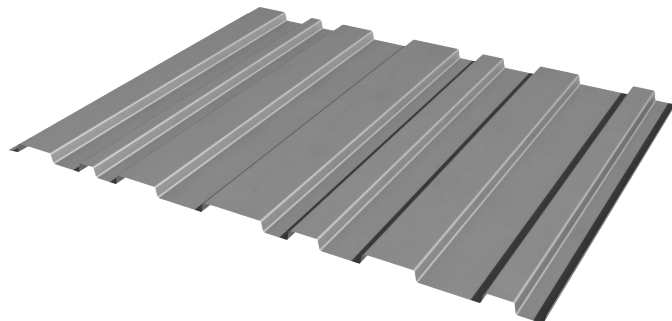




MANHATTAN 780
Profile height 60 mm

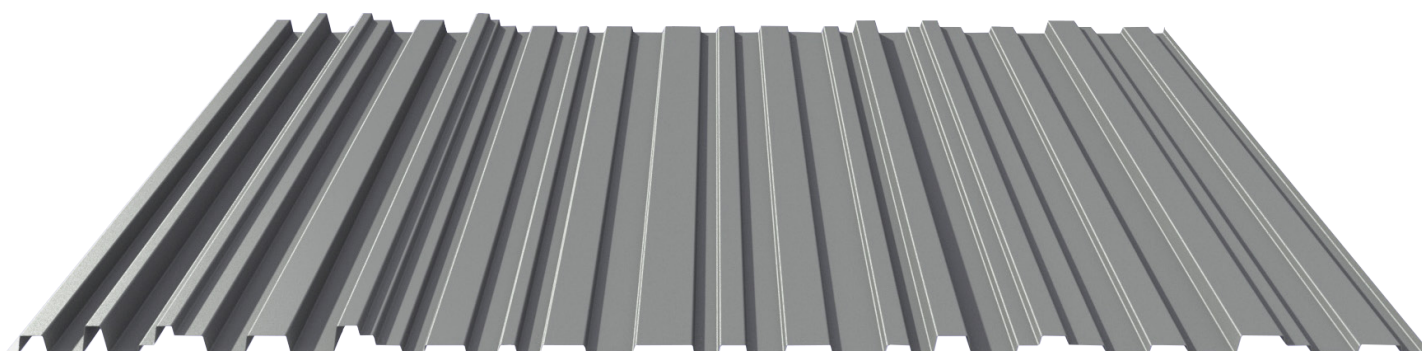


BROOKLYN 950
Profile height 40 mm



QUEENS 980
Profile height 20 mm

Create your own pattern by mixing the three different profiles with their different heights.



LOAD CAPACITIES

SPAN TABLES IN DAN/M², ACCORDING TO WIND LOAD

Limit deflection criterion taken into account: 1/150th according to French professional recommendations (RAGE) under wind load calculated as per NF EN 1991-1-4

Nominal thicknesses in mm

| PRESSURE | | Span (m) | SUCTION | |
|------------|------------|-------------|------------|------------|
| 2 supports | 3 supports | | 2 supports | 3 supports |
| 183 | 300 | 1.50 | 155 | 298 |
| 151 | 264 | 1.60 | 128 | 246 |
| 126 | 233 | 1.70 | 106 | 205 |
| 106 | 204 | 1.80 | 90 | 173 |
| 98 | 188 | 1.85 | 83 | 159 |
| 90 | 174 | 1.90 | 76 | 147 |
| 83 | 161 | 1.95 | 71 | 136 |
| 77 | 149 | 2.00 | 65 | 126 |
| 72 | 138 | 2.05 | 61 | 117 |
| 67 | 129 | 2.10 | 56 | 109 |
| 62 | 120 | 2.15 | 53 | 101 |

Basé sur les calculs de la tôle Queens

The NEW-YORK range metal sheets are non-structural sheets according to standard NF EN 14782:2006, as per RAGE Professional Recommendations for Cladding of July 2014, not intended to receive PPE anchoring devices according to EN 795 standard or lifelines.



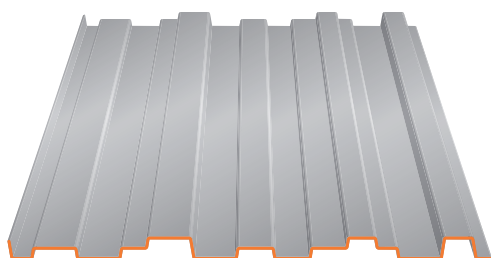
Calculation according to Eurocode III Part 1.3 (EN-1993)

Technical information obtained according to installation requirements for metal cladding from July 2014.

Seismic validation: CSTB DCC/CLC_12_229_1 study report of 02/25/2013



Toys



BROOKLYN MINI 460
Profile height 20 mm

LOAD CAPACITIES

SPAN TABLES IN DAN/M², ACCORDING TO WIND LOAD

Limit deflection criterion taken into account: 1/150th according to French professional recommendations (RAGE) under wind load calculated as per NF EN 1991-1-4

| PRESSURE | | | Span (m) | SUCTION | | |
|------------|------------|-------------|----------|------------|------------|-------------|
| 2 supports | 3 supports | 4 supp. & + | | 2 supports | 3 supports | 4 supp. & + |
| 476 | 476 | 488 | 1.0 | 507 | 418 | 428 |
| 358 | 397 | 407 | 1.2 | 293 | 349 | 357 |
| 225 | 340 | 349 | 1.4 | 185 | 299 | 298 |
| 151 | 298 | 245 | 1.6 | 124 | 261 | 199 |
| 106 | 239 | 172 | 1.8 | 87 | 193 | 140 |
| 77 | 174 | 125 | 2.0 | 63 | 140 | 102 |
| 58 | 131 | 94 | 2.2 | 48 | 106 | 77 |
| 45 | 101 | 73 | 2.4 | 37 | 81 | 59 |
| 35 | 79 | 57 | 2.6 | 29 | 64 | 46 |
| 28 | 63 | 46 | 2.8 | 23 | 51 | 37 |
| 23 | 52 | 37 | 3.0 | 19 | 42 | 30 |

The TOYS range metal sheets are non-structural sheets according to standard NF EN 14782:2006, as per RAGE Professional Recommendations for Cladding of July 2014, not intended to receive PPE anchoring devices according to EN 795 standard or lifelines.

Test report n°R134294023-001-1



Test performed according to norm NF P 34-503-1 and interpretation according to interpretation as per Annexes E and N of the RAGE French professional recommendations

Technical information obtained according to installation requirements for metal cladding from July 2014.

Seismic validation: CSTB DCC/CLC_12_229_1 study report of 02/25/2013

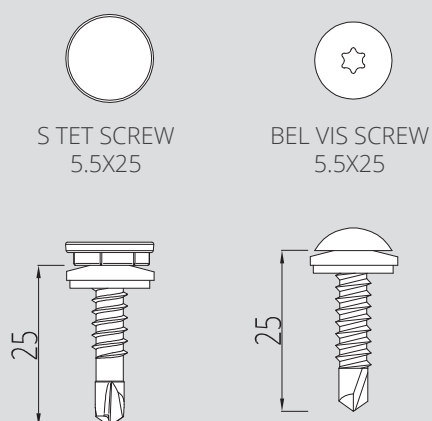


INSTALLATION

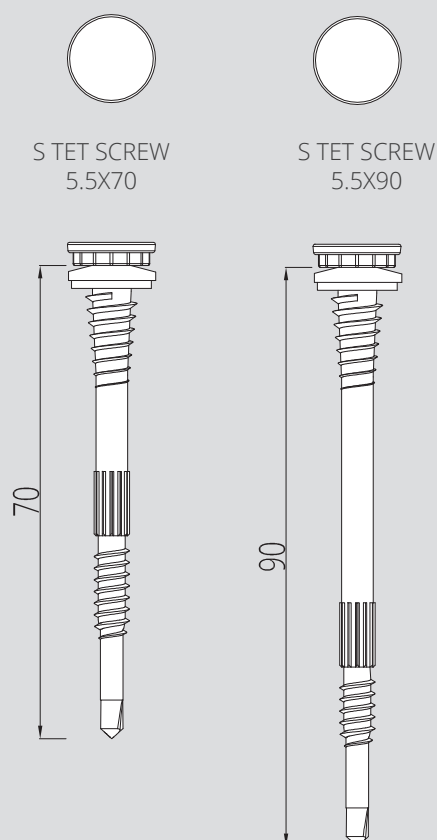
FIXING THE PANELS

With simplicity in mind, the rhythms of the NEW-YORK range should not be broken by prominent screws. It is advisable to choose the most discreet models offered by manufacturers. Here are some examples particularly well suited to the task.

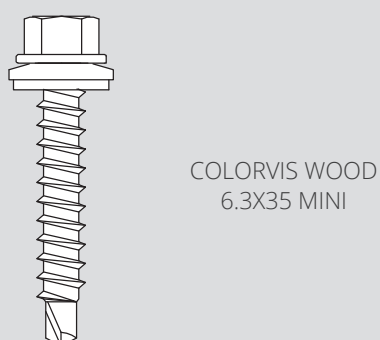
FIXING ON METAL FRAME



FIXING FOR DOUBLE-SKIN CLADDING

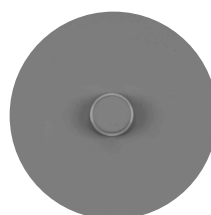


FIXING ON TIMBER FRAME



Available in the RAL color of your choice

S TET SCREW HEAD



BEL VIS SCREW HEAD

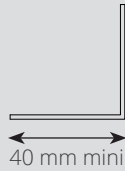


NEW-YORK range screws are a visible part of the façade.

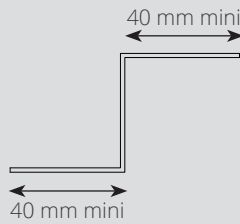
As well as complying with standards, particular care must be taken to ensure that it looks good. The shape of the screw head and its colour can be adapted to each building.

SECONDARY FRAMING

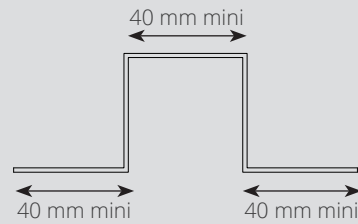
Metal framing «L»



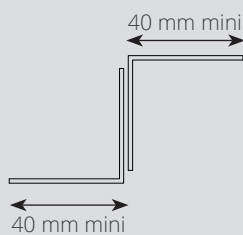
Metal framing «Z»



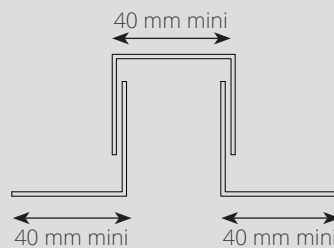
Metal framing «Ω»



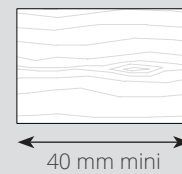
Ajustable metal framing «Z»



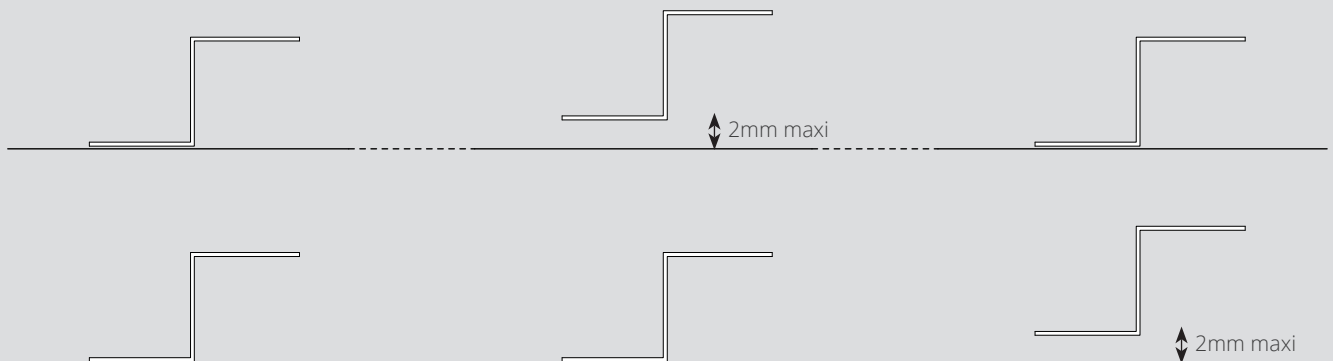
Ajustable metal framing «Ω»



Timber frame



FLATNESS OF SUPPORT

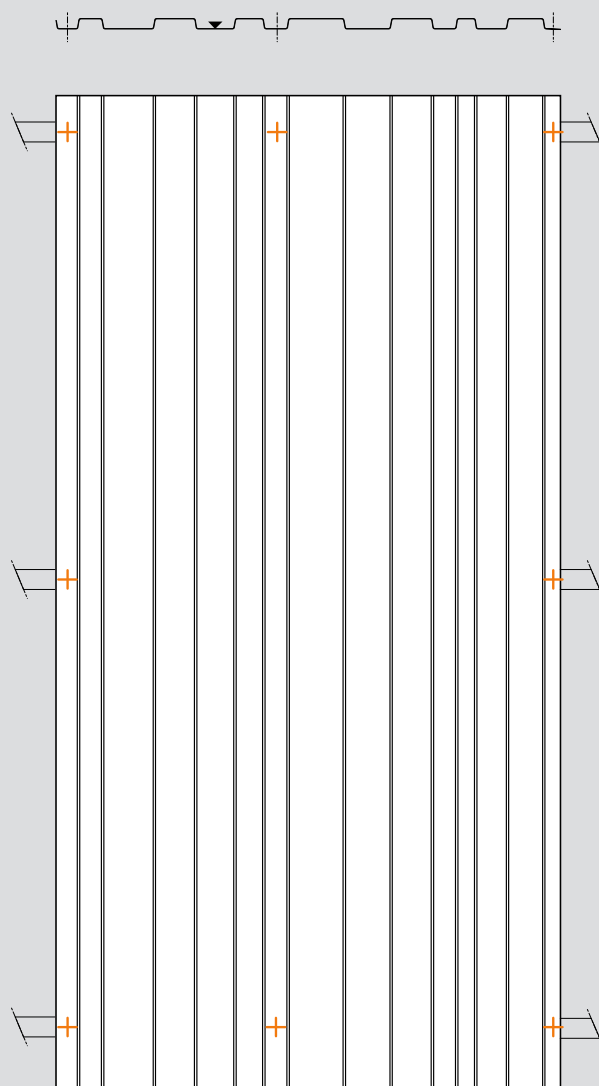


The secondary framing elements must be sized by the installation company. Metal framing should be at least 1.5mm thick.

The flatness of the support is essential when installing the panels.

Regardless of the type of secondary framework chosen (metal or wood), it must comply with a maximum permissible co-planarity of 2mm over three **e supports**.

QUEENS 980



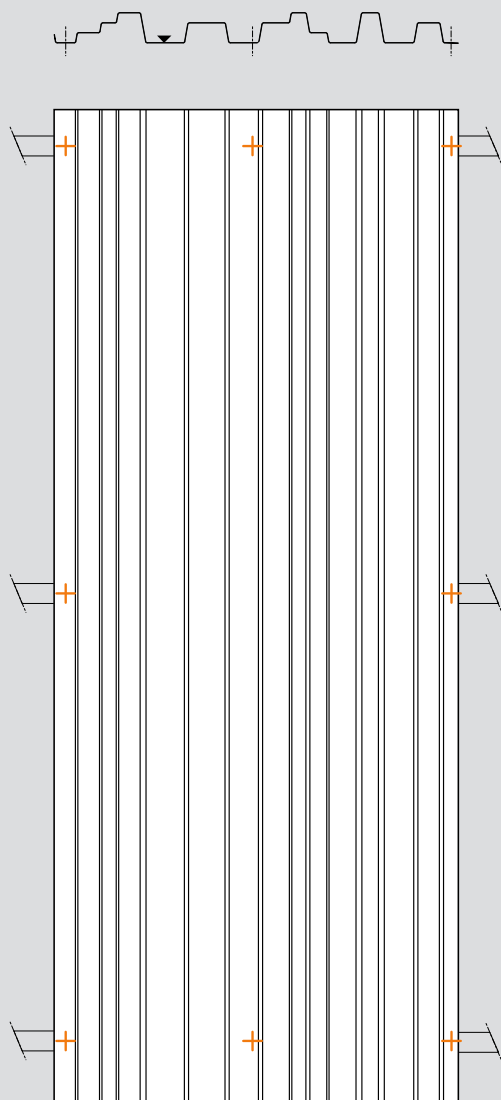
SCREWING PATTERN FOR NEW-YORK PANELS

ATELIERS 3S offers you, for each panel model, a technical optimization with minimal aesthetic impact. By placing the screws as close as possible to the ribs, they are concealed by the shadow of the wave and are more discreet.

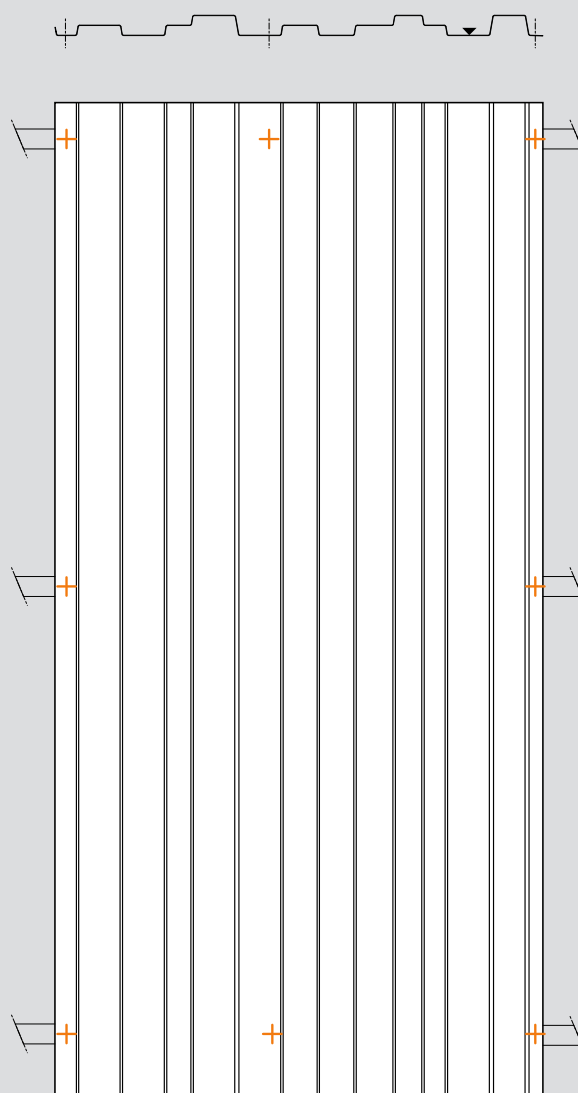
Particular attention must be paid to the tightening torque of screws located in flat areas to avoid any deformation of the facing.

When the different types of profile are mixed on the same façade, as far as possible put all the screws on the same side of the central rib, to ensure visual uniformity.

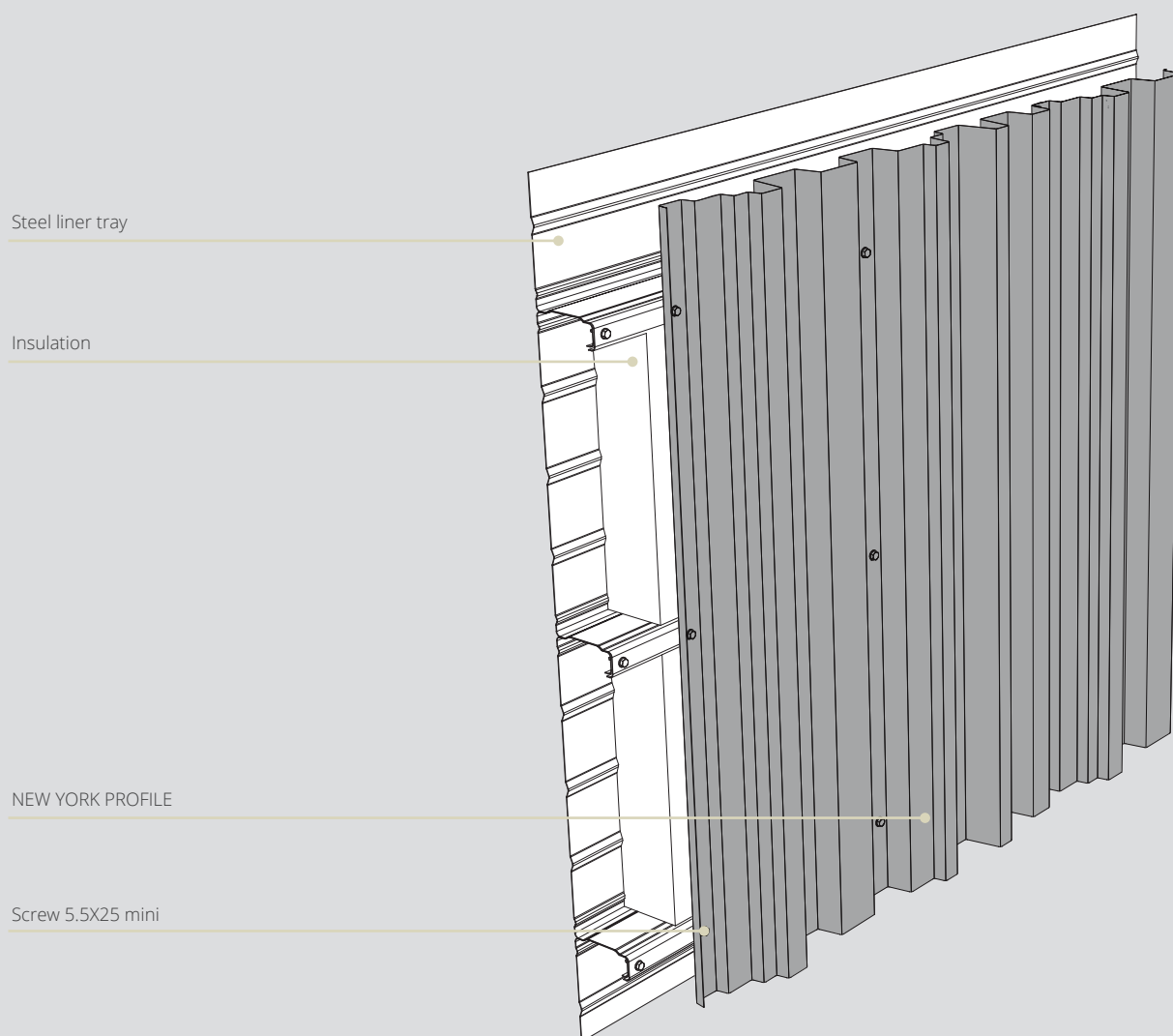
MANHATTAN 780



BROOKLYN 950



DOUBLE-SKIN INSTALLATION



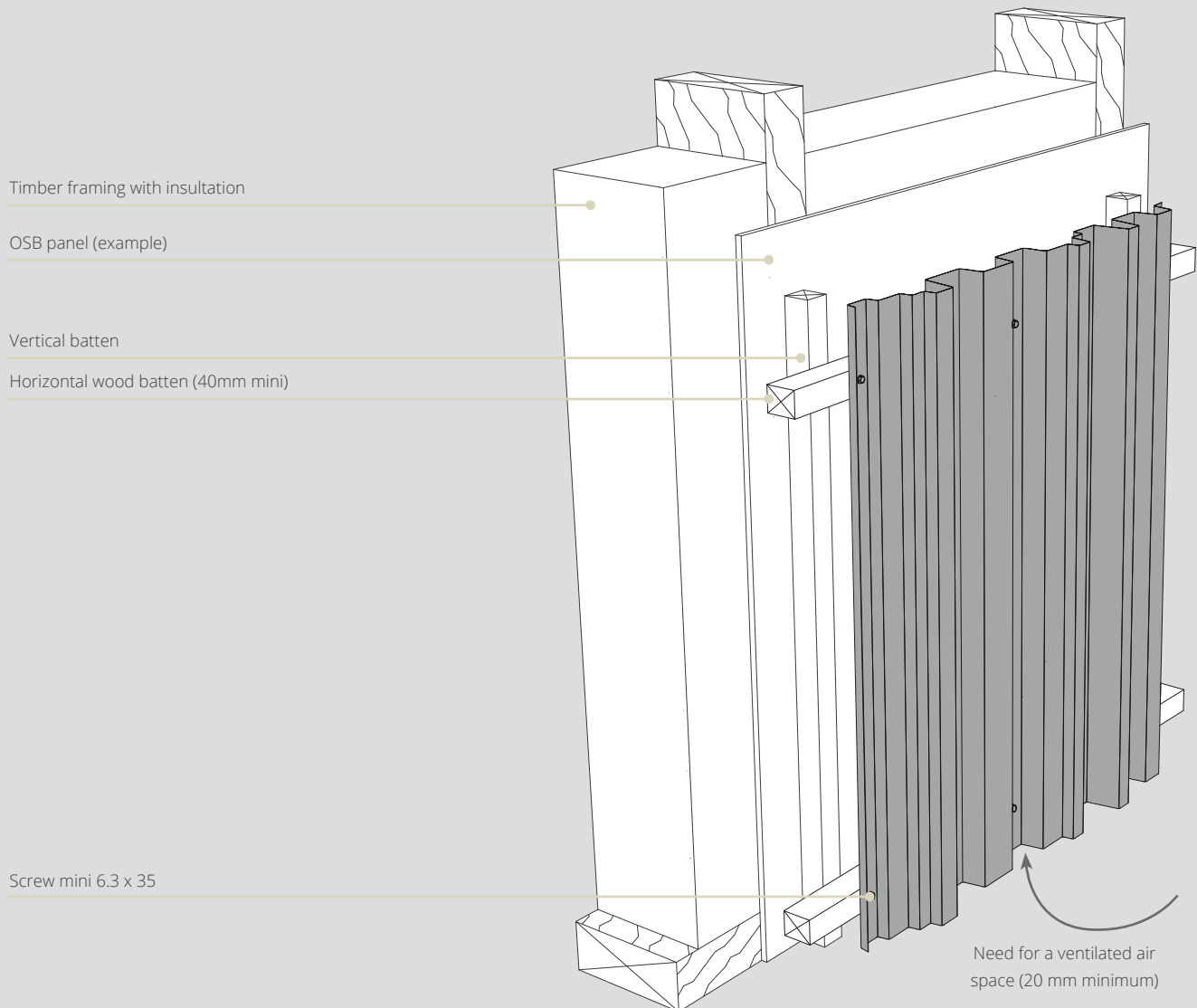
BUILDINGS WITH METAL FRAMING

NEW-YORK is a traditional cladding system installed in accordance with the RAGE rules (French steel cladding installation recommendations). It is perfectly suited to double-skin installation.

The flatness of the support is very important for a quality finish, and an adjustable secondary framework is recommended for horizontal installation.

The sheets should be fixed in accordance with RAGE recommendations, using the appropriate screws and bolts according to the type of building.

TIMBER-FRAMED WALLS



TIMBER-FRAMED WALLS

The framework and its installation must comply with Cahier CSTB 3316.

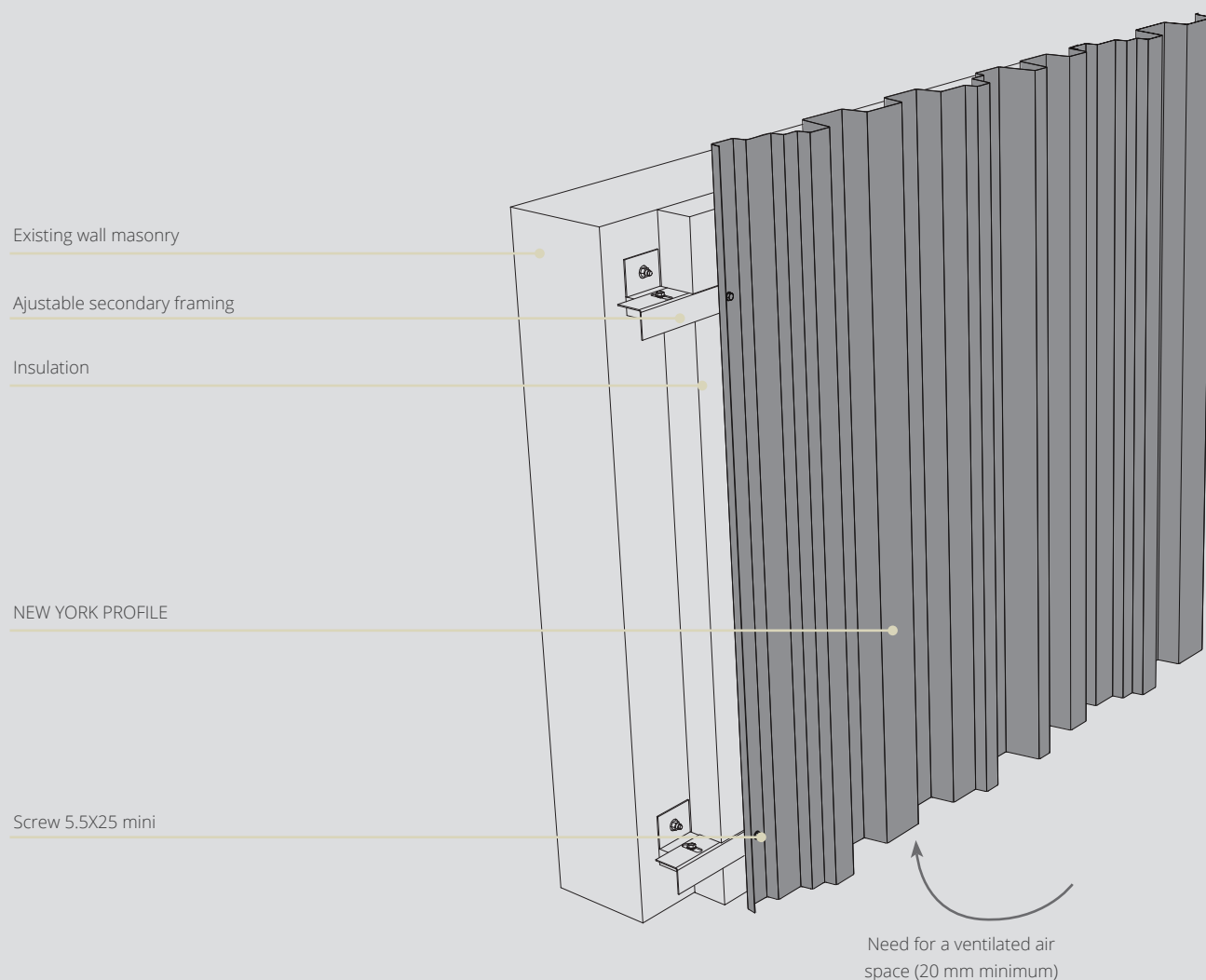
In the case of a timber frame, a ventilated air space must be provided.

NEW-YORK cladding complies with RAGE rules and does not require an additional rain screen.

The flatness of the support is very important for a quality finish, and an adjustable secondary framework is recommended for horizontal installation.

The sheets should be fixed in accordance with RAGE recommendations, using the appropriate screws and bolts according to the type of building.

EXTERNAL WALL INSULATION (EWI) ON MASONRY WALLS WITH METAL FRAMING



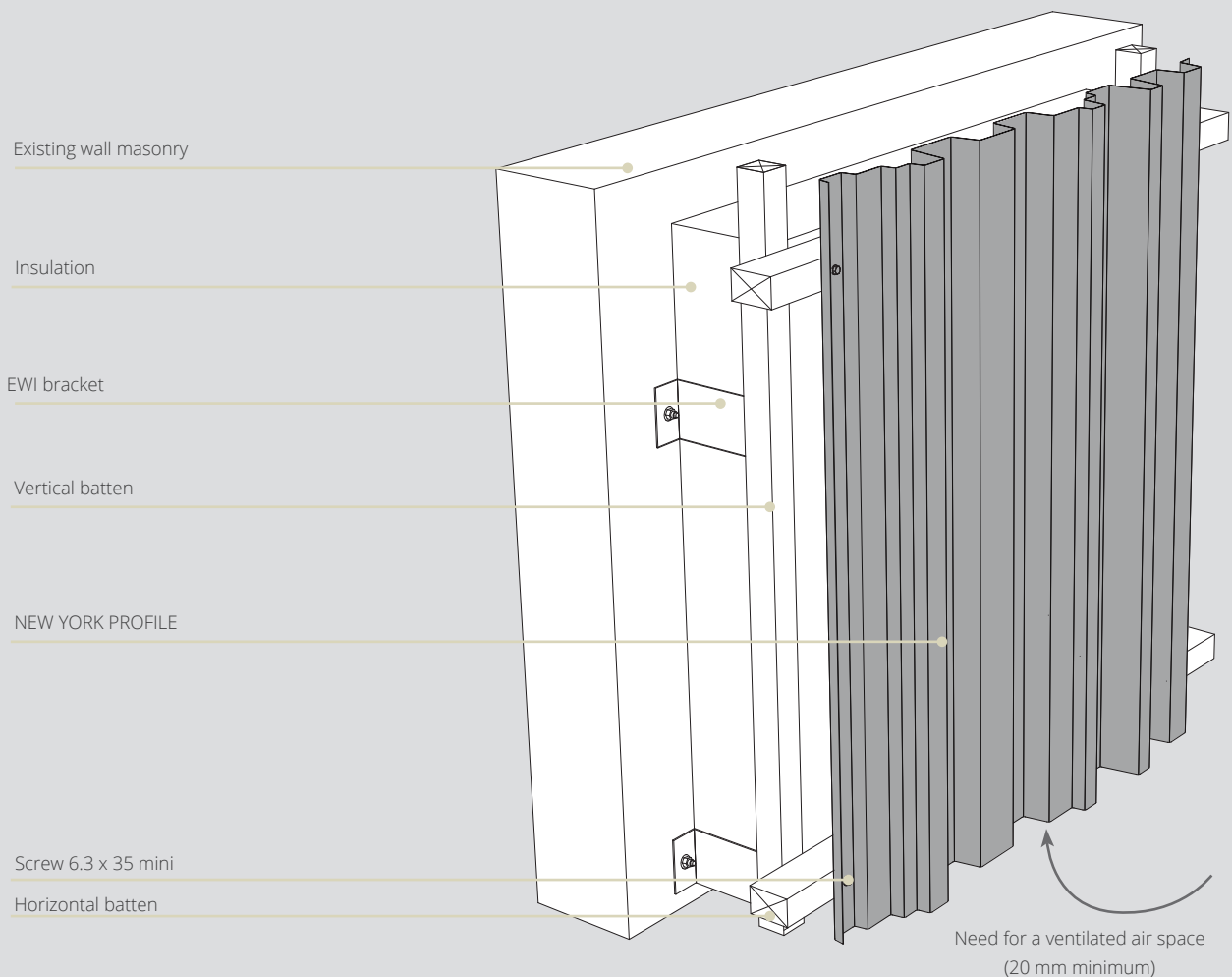
EXTERNAL WALL INSULATION RENOVATION

The NEW-YORK range can be used in the construction or renovation of buildings with external wall insulation (EWI), as all the profiles in the range are suitable for this type of installation.

The framework and its installation must comply with CSTB Specification 3194. Load-bearing profiles must be fitted at the top and bottom of the cladding, and must be sized accordingly.

The flatness of the support is very important for a quality finish, and an adjustable secondary framework is recommended.

EXTERNAL WALL INSULATION (EWI) ON MASONRY WALLS WITH TIMBER FRAMING



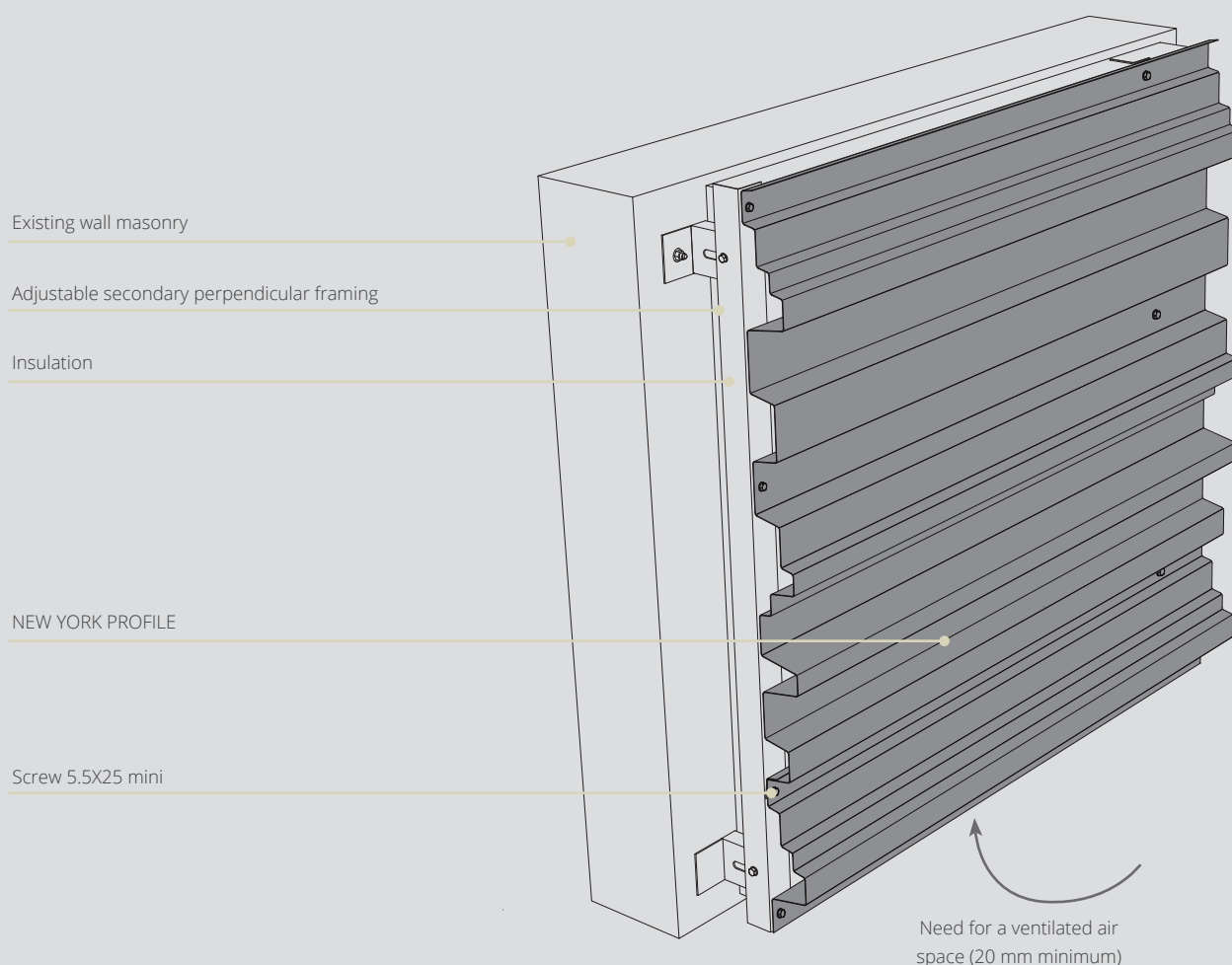
EXTERNAL WALL INSULATION RENOVATION

The flatness of the support is very important. Adjustable brackets for a quality finish, and an adjustable secondary framework is recommended.

The adjustable angle brackets ensure that the framework is perfectly flat.

The framework and its installation comply with CSTB Specification 3316.

EXTERNAL WALL INSULATION (EWI) ON MASONRY WALLS WITH METAL FRAMING / HORIZONTAL APPLICATION



HORIZONTAL INSTALLATION

NEW-YORK range like any classical steel wall cladding can be installed horizontally.

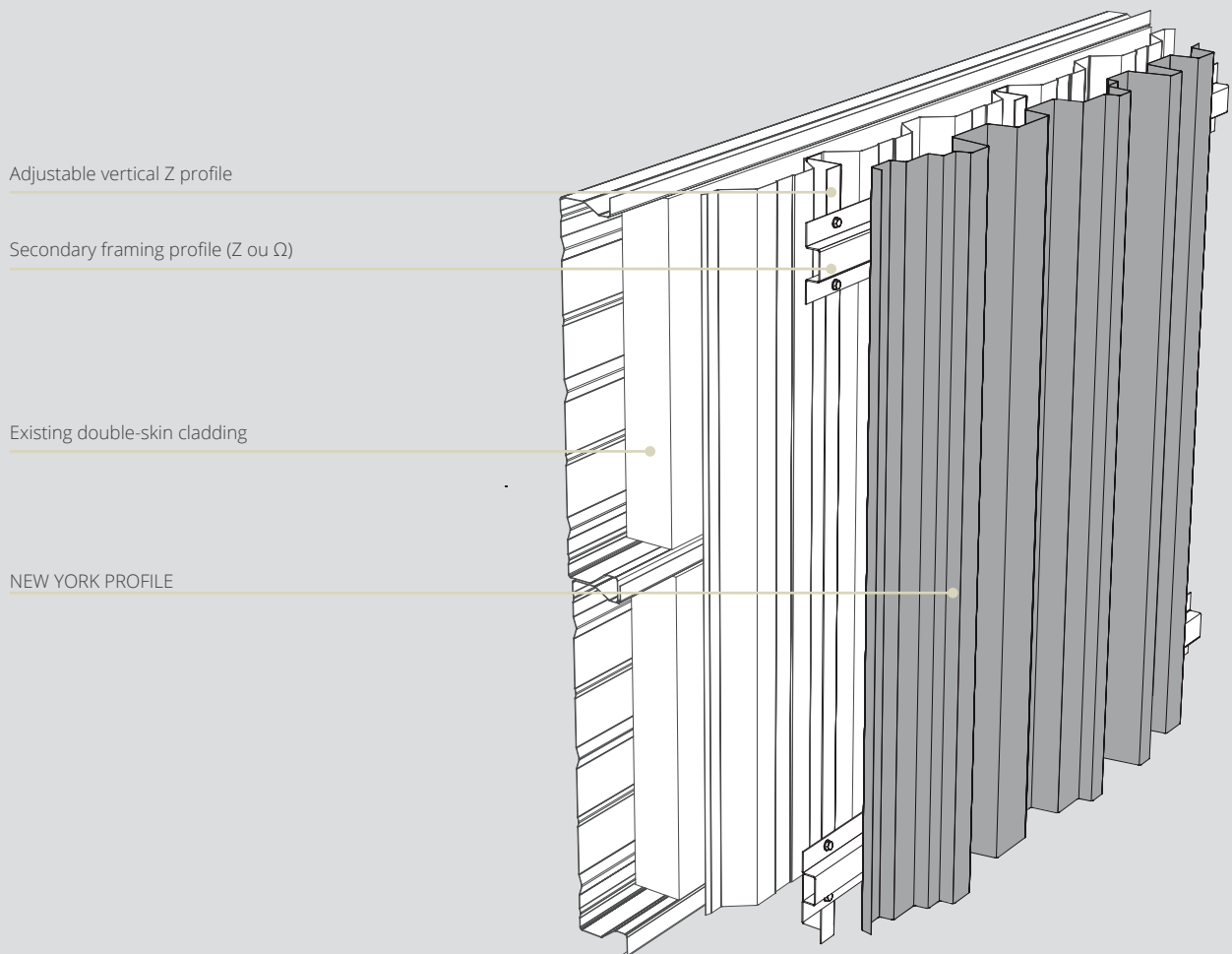
The installation must comply with the RAGE rules (French steel cladding installation recommendations). The layout must take into account the maximum length of the sheets: 8000mm. Specific finishing elements must be provided.

The cladding should be cleaned regularly with water to prevent the accumulation of dust on the horizontal parts.

The flatness of the support is very important for a quality finish, and an adjustable secondary framework is recommended for horizontal installation.

The sheets should be fixed using the appropriate screws and bolts according to the type of building and framing.

INSTALLATION ON EXISTING DOUBLE-SKIN CLADDING



RENOVATING A BUILDING WITHOUT REMOVING THE EXISTING CLADDING

The NEW-YORK range can be installed in the renovation of buildings on existing wall cladding.

The flatness of the support is very important for a quality cladding installation, Adjustable accessories must be used.



FINISHING PROFILES



Beyond the aesthetic quality of its cladding panels, a successful metal facade requires precise and well-designed finishing profiles. ATELIERS 3S takes particular care to offer discreet elements that connect with the styles of the associated cladding.

In these pages, you'll find a selection of models that are fully adaptable to the actual dimensions of your project.

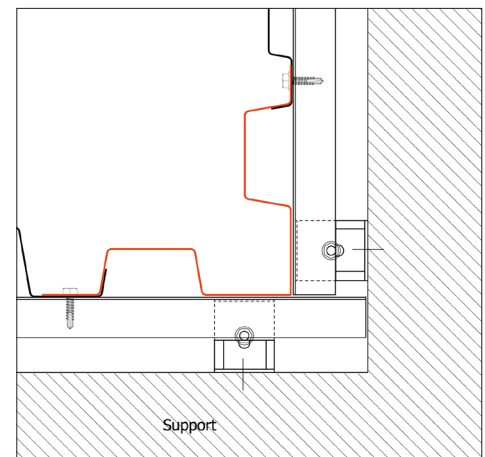
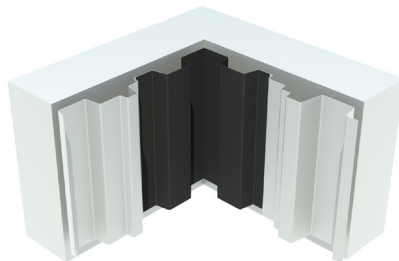
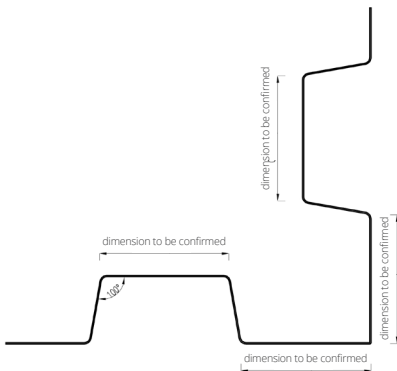
No matter how precise your installation is, finishing profiles will always be custom-made elements. Please don't hesitate to provide us with your exact dimensions and any other installation drawings.

NEW YORK cladding has variable ribs heights, so it is recommended that the total depth of the cladding, it is recommended that the total depth of the cladding of 60 mm be taken into account for each finishing profiles design.

In areas with complex single points, the QUEENS model and its constant low height of 20 mm will make finishing profiles much easier.

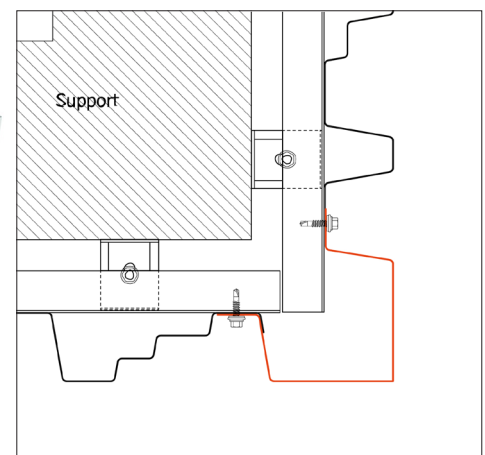
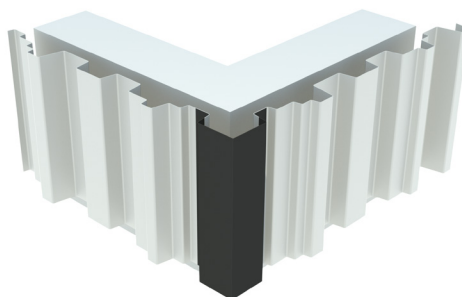
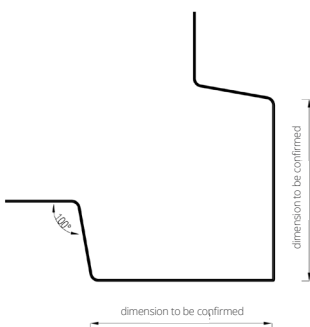
INSIDE CORNER

VERTICAL APPLICATION

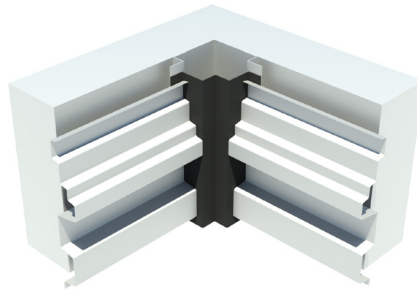
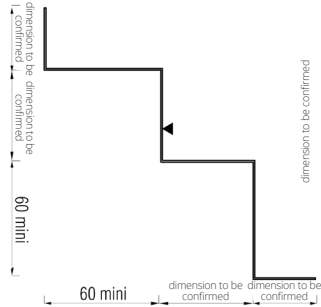


OUTSIDE CORNER

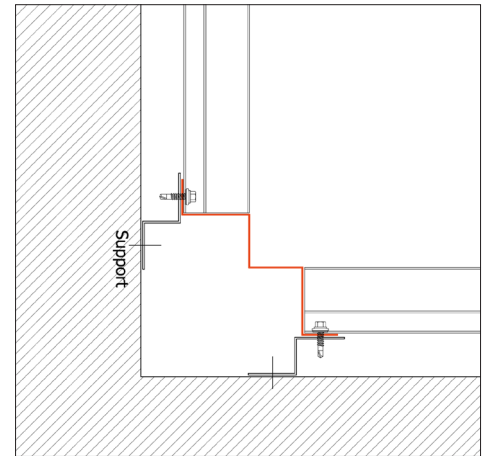
VERTICAL APPLICATION



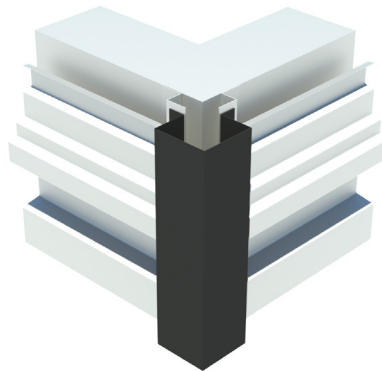
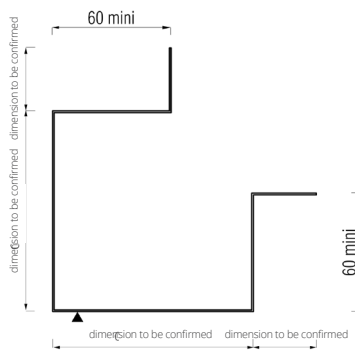
INSIDE CORNER



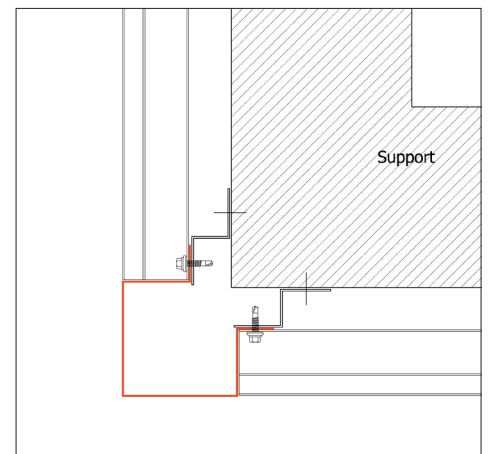
HORIZONTAL APPLICATION



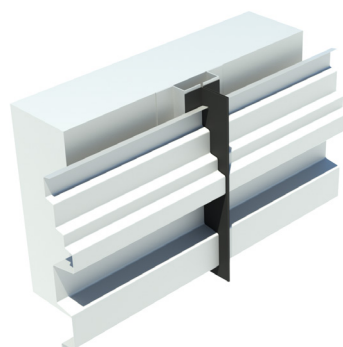
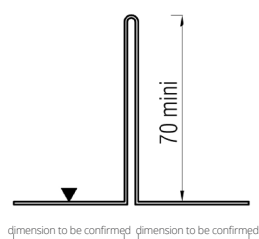
OUTSIDE CORNER



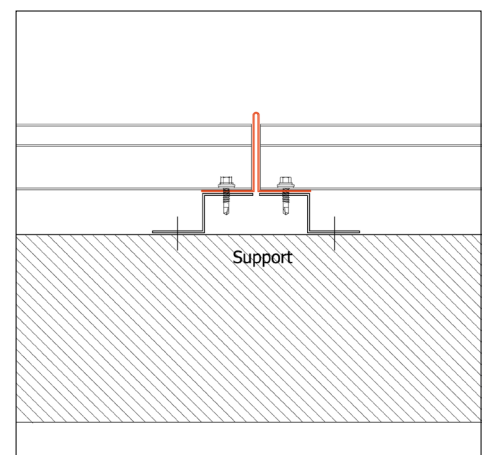
HORIZONTAL APPLICATION



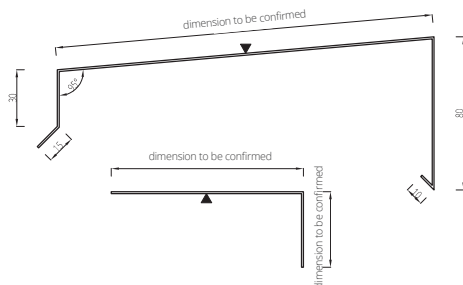
JUNCTION



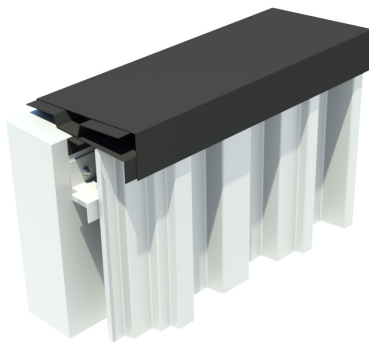
PIN JOINT HORIZONTAL APPLICATION



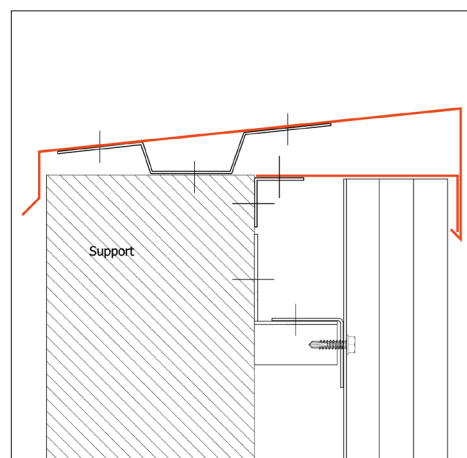
FACADE TOP



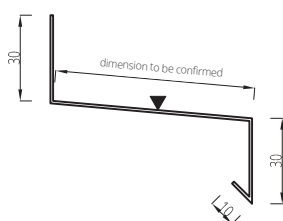
Lg : 4,0 m maxi
Th : 0.75 mm



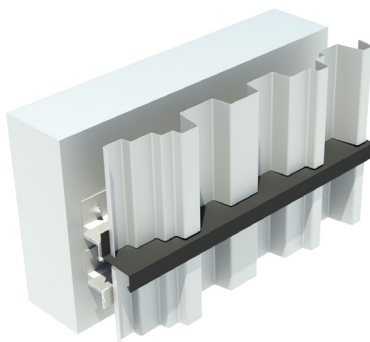
COPING



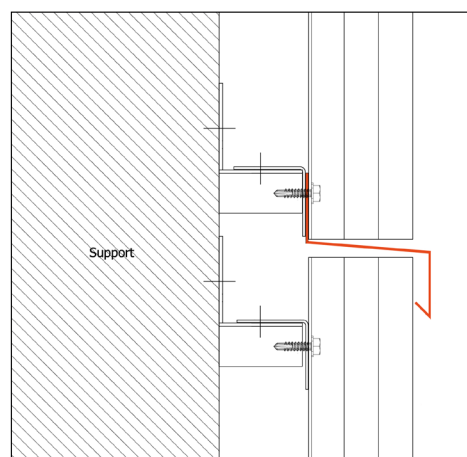
JUNCTION



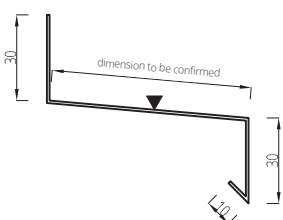
Lg : 4,0 m maxi
Th : 0.75 mm



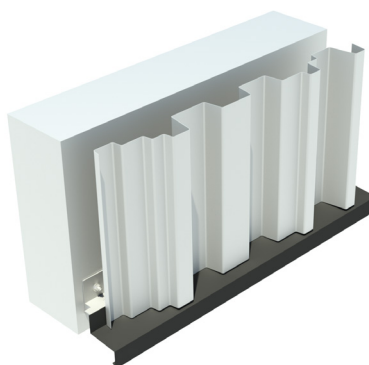
DRIP EDGE VERTICAL APPLICATION



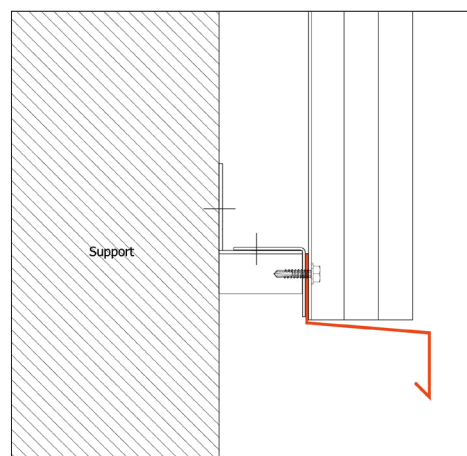
FACADE BOTTOM



Lg : 4,0 m maxi
Th : 0.75 mm

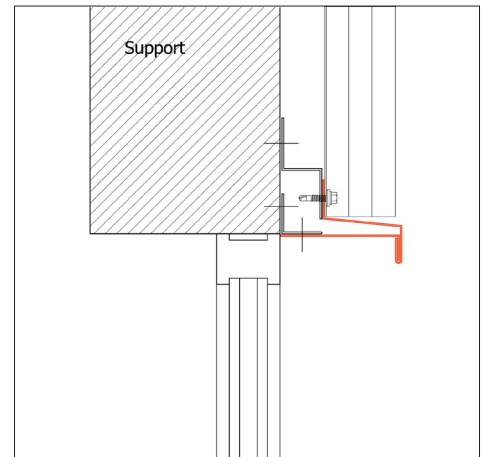
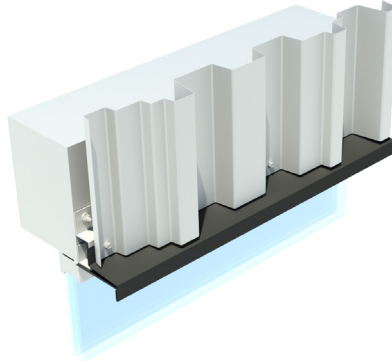
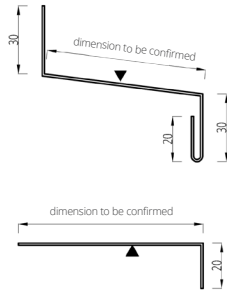


DRIP



OPENING

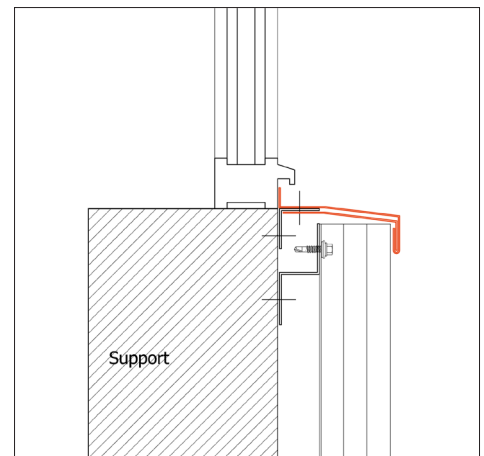
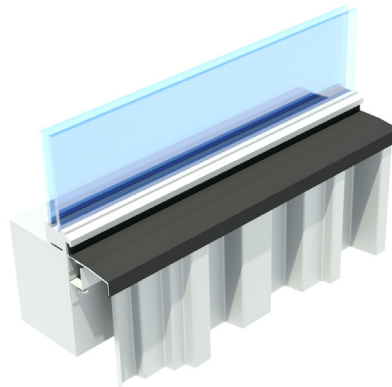
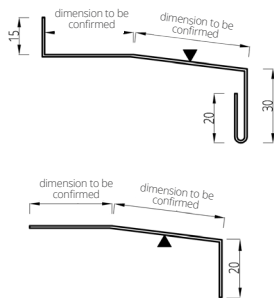
LINTEL



Lg : 4,0 m maxi
Th : 0.75 mm

OPENING

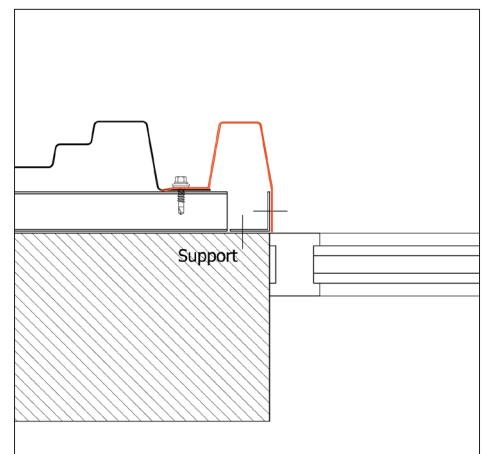
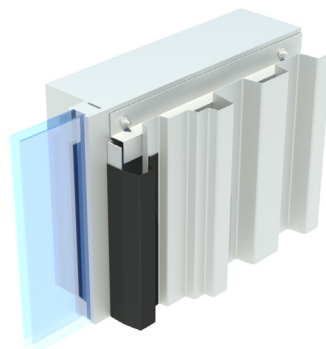
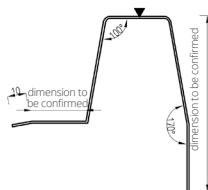
SILL



Lg : 4,0 m maxi
Th : 0.75 mm

OPENING

JAMB



Lg : 4,0 m maxi
Th : 0.75 mm



PROJECTS GALLERY





Ghampinueil - Architecte Benjamin Tock



La Pardieu (63) - Lelièvre - Archi 3A



La Pardieu (63) - Lelievre - Archi 3A





Image editing - Ateliers 35



Image editing - Ateliers 35





Image editing - Ateliers 35



Image editing - Ateliers 3S



COLOR CHART

Colours and materials **used**

ORIGINAL

Available in
0.75 mm

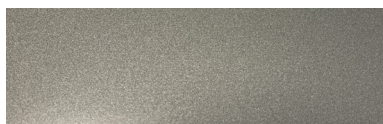
Exclusive, ultra resistant colours that meet the requirements of the 3S® range.

METALLIC



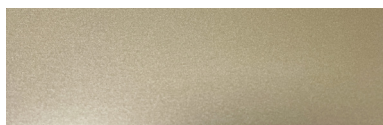
METAL 0207

35µm



PEARL 0208

35µm



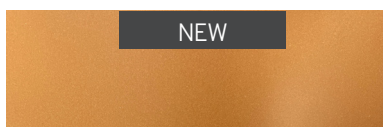
PLATINUM 0206

35µm



INTENSE GOLD 6995

35µm

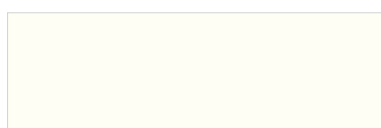


COPPER 0603

35µm

NEW

SATIN



COTTON 0201

35µm



RAL 5008 - OCEAN

35µm



DUVET 0202

35µm



RAL 7032 - SILEC GREY

25µm



POWDER 0203

35µm



RAL 7022 - EGGSHELL

35µm



RAL 7037

25µm



POP 0204

35µm



RAL 7016 - ANTHRACITE GREY

25µm



SPRING 0205

35µm



RAL 7021 - BLACK GREY

25µm



RAL 9005 - DEEP BLACK

25µm



Please contact us for further information on our RAL colour chart and our special custom-designed textured coatings.

Colours and materials **used**

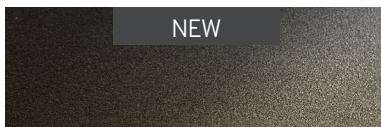
MATERIALS

Coatings that are as fabulous as the materials.

Available in
0.75 mm



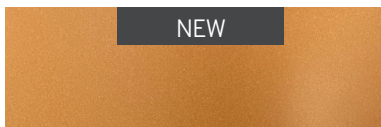
OXYDE 0602 35µm



DARK BRONZE 0604 50µm



INTENSE GOLD 6995 35µm

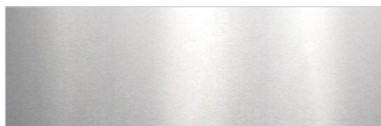


COPPER 0603 35µm

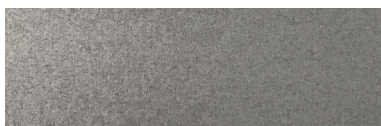
ROUGH

Reveal the nobility of raw materials.

Available in
0.75 mm



STAINLESS STEEL 0302
Shiny

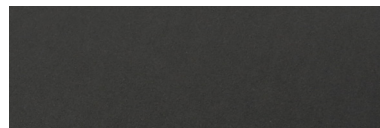


SURFACE GRAIN 0301
Galvanized steel with high-precision grain

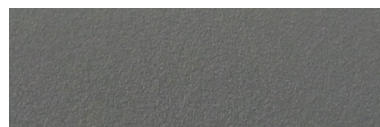
ZINC SPIRIT

Deep matte and very fine texture for a true-to-life zinc effect.

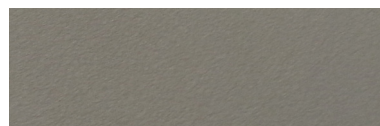
Available in
1.00 - 0.75 mm



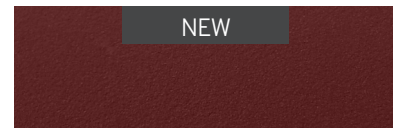
NERRO 0104 50µm



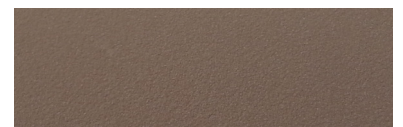
GALEO 0103 50µm



AZURO 0102 50µm



VINO 0106 50µm



VOLCANO 0101 50µm



BIANCO 0105 50µm

ONWOOD

True-to-life matte wood texture. Available in all wood finish or with optional black strips "Colorigami® Process".

Available in
0.75 mm



SILVER TECK (BLACK BANDS) 0409 47µm



SILVER TECK (ALL WOOD) 0408 47µm



NATURAL OAK (BLACK BANDS) 0406 47µm
Also available in 0.63 mm
0416 (MINI)
0426 (MAXI)



NATURAL OAK (ALL WOOD) 0403 47µm



HAZELNUT OAK (BLACK BANDS) 0405 47µm



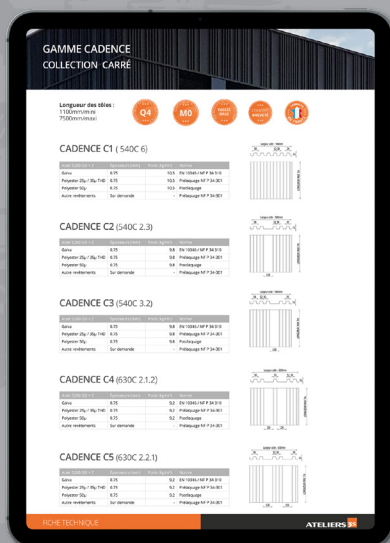
HAZELNUT OAK (ALL WOOD) 0402 47µm



COFFEE OAK (BLACK BANDS) 0407 47µm



COFFEE OAK (ALL WOOD) 0404 47µm



- TECHNICAL DATASHEETS
- INSTALLATION INSTRUCTIONS
- GUIDES TO FINISHING FOLDS
- CCTP (SPECIAL TECHNICAL SPECIFICATIONS)
- FILES DWG, BIM, SKETCHUP
- ETC.

Find us at:
www.ateliers3s.com



SCREWIT OUR SHOWROOM

100 AVENUE DAUMESNIL 75012 PARIS - FRANCE

GRUPE **FIMAVI**

NEW YORK 2025



Rue verte, ZI Ladoux - F-63118 Cébazat - France
T. +33(0)4 73 88 59 50
contact@ateliers3s.com - www.ateliers3s.com

02/07/2025