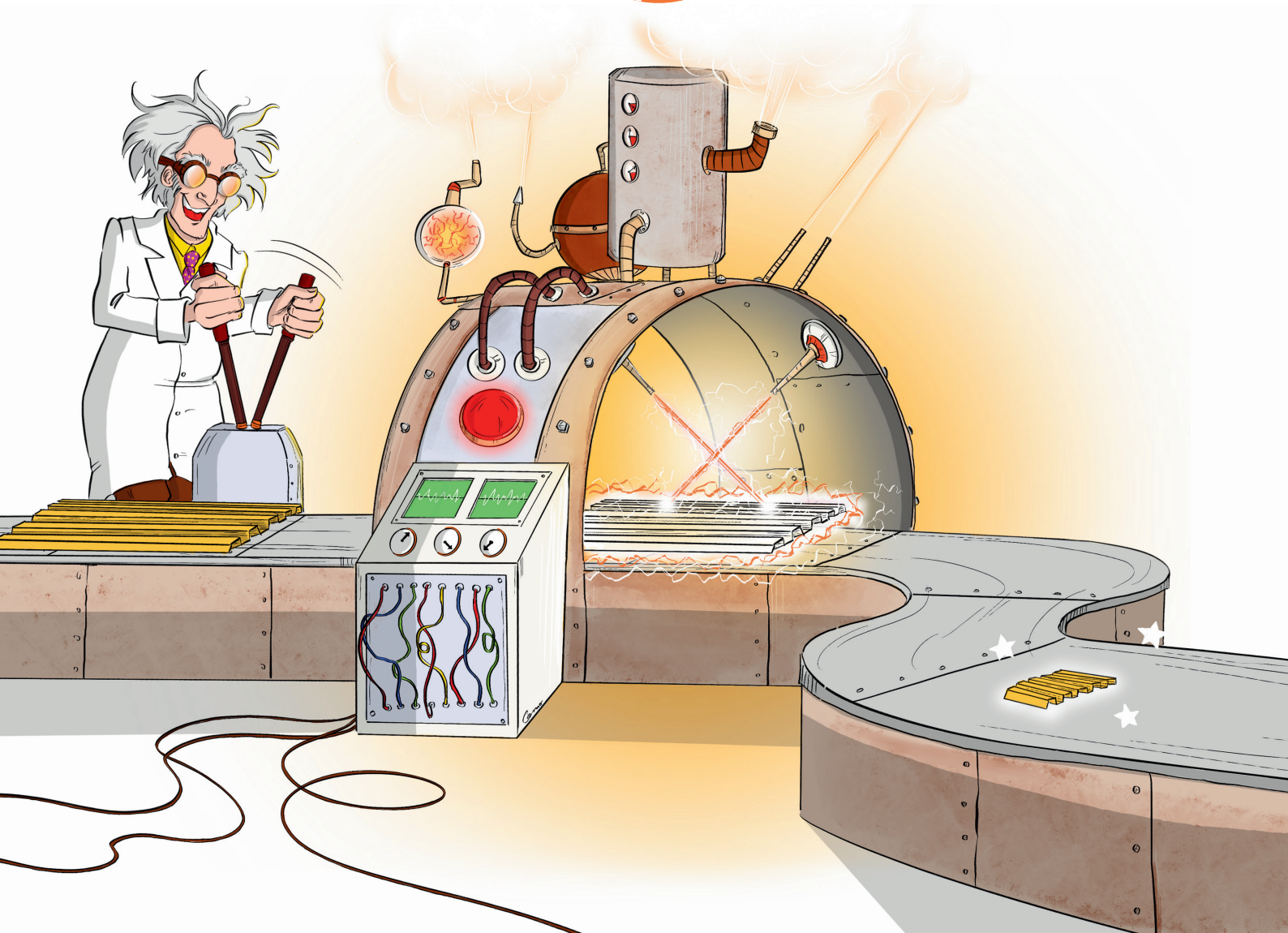
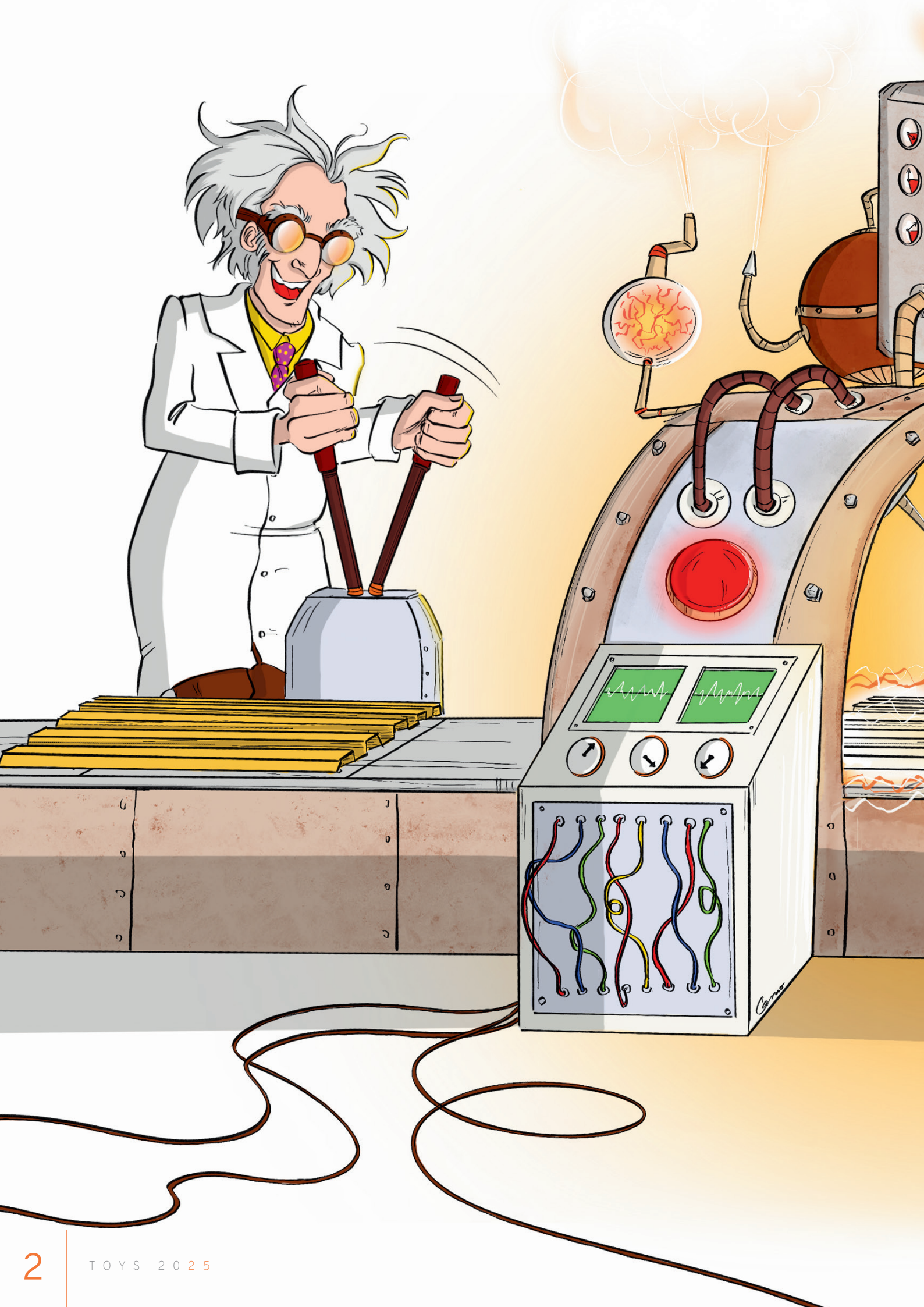


# Toys<sup>®</sup>

THE WORLD OF  AT **1/2** SCALE



**ATELIERS**   
metal cladding creators





# SUMMARY

## TOYS

ATELIERS 3S	4
TOYS	12
CONCEPT.....	14
BROOKLYN MINI 360.....	16
NANO MINI 360.....	17
BARO MINI 360.....	18
CLAIREWOA MINI 440.....	19
CADENCE MINI CARRÉ.....	20
CADENCE MINI TRIANGLE.....	21
SPAN TABLES.....	22
INSTALLATION	28
PROJECTS GALLERY	34
COLOR CHART	38

# THE LATEST ENTRANT

**ATELIERS** 

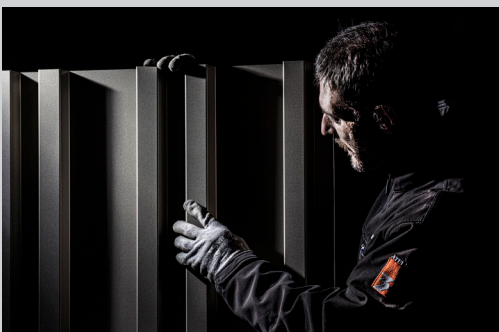
**How is it that the latest company in the field of metal cladding has taken less than 10 years to shape its market?**

“

You're familiar with the following universal theory; everyone can identify with it: one of the great enemies of humankind – of our human way of thinking – *is habit*.

The habit of **thinking within a certain framework** not because we have established it ourselves, but just because it is there, locking us into an ultimately comfortable standard process: Thinking like Mr. Average.

Our story perfectly embodies how to buck this trend: we are the latest entrant to the French metal cladding market. Despite being the most recently established company, in just over 10 years, we have built a reputation that is unrivalled in the sector, consistently outpacing the competition with our original and desirable designs; **our influence is clearly unrelated to our economic weight**.





# 10 YEARS

OF FIRSTS

# IMPACT

- first to reinvent the aesthetics of metal clad buildings
- first to bring steel cladding into towns and cities
- first to offer a 30-year warranty
- first to invent a random facade
- first to offer low carbon steel as standard
- first selective lacquering of a pre-painted coil



# IMPACT DESIGN





We have pushed back the boundaries and brought steel cladding **into cities and towns**. Offices, apartment blocks, interior design – a significant part of our business is generated by projects outside industrial buildings; steel cladding is now considered a desirable element.

**We have consulted architects, builders, artisans and contractors.** Together, we have radically changed the scene in just a few years. Ateliers 3S impacts on its market in terms both of building aesthetics and environmental concerns, and is creatively liberating.

This positive impact becomes yours also. It is encoded in your buildings. **Permanently.**”



# IMPACT CLIMAT



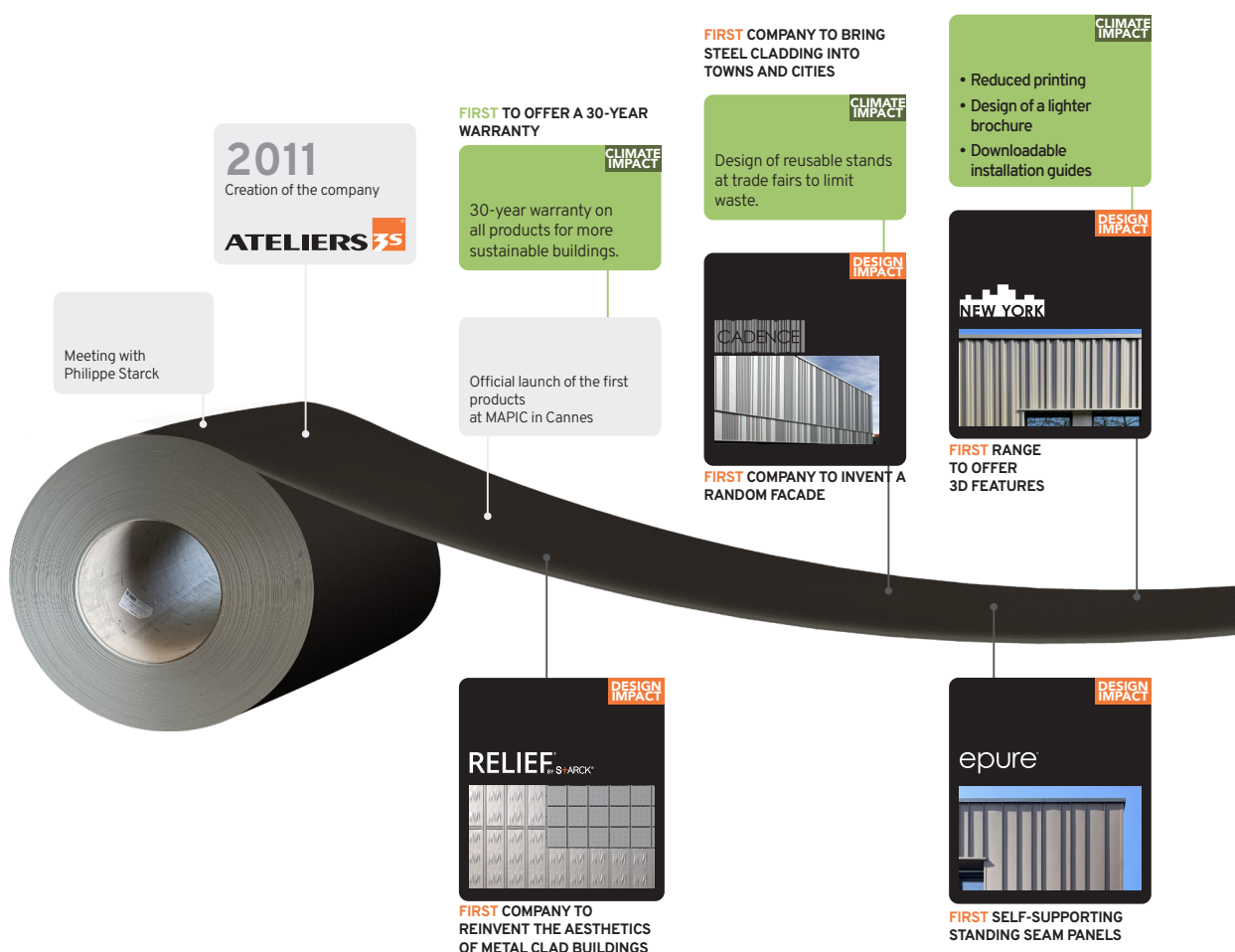


Our **30-year warranty** – ensuring that our products last three times longer – was our first step in an eco-friendly approach to sustainability and economy. However, while steel can be recycled repeatedly, the recyclable volume currently available is only sufficient to meet a quarter of global demand. The future therefore lies in low carbon steel.

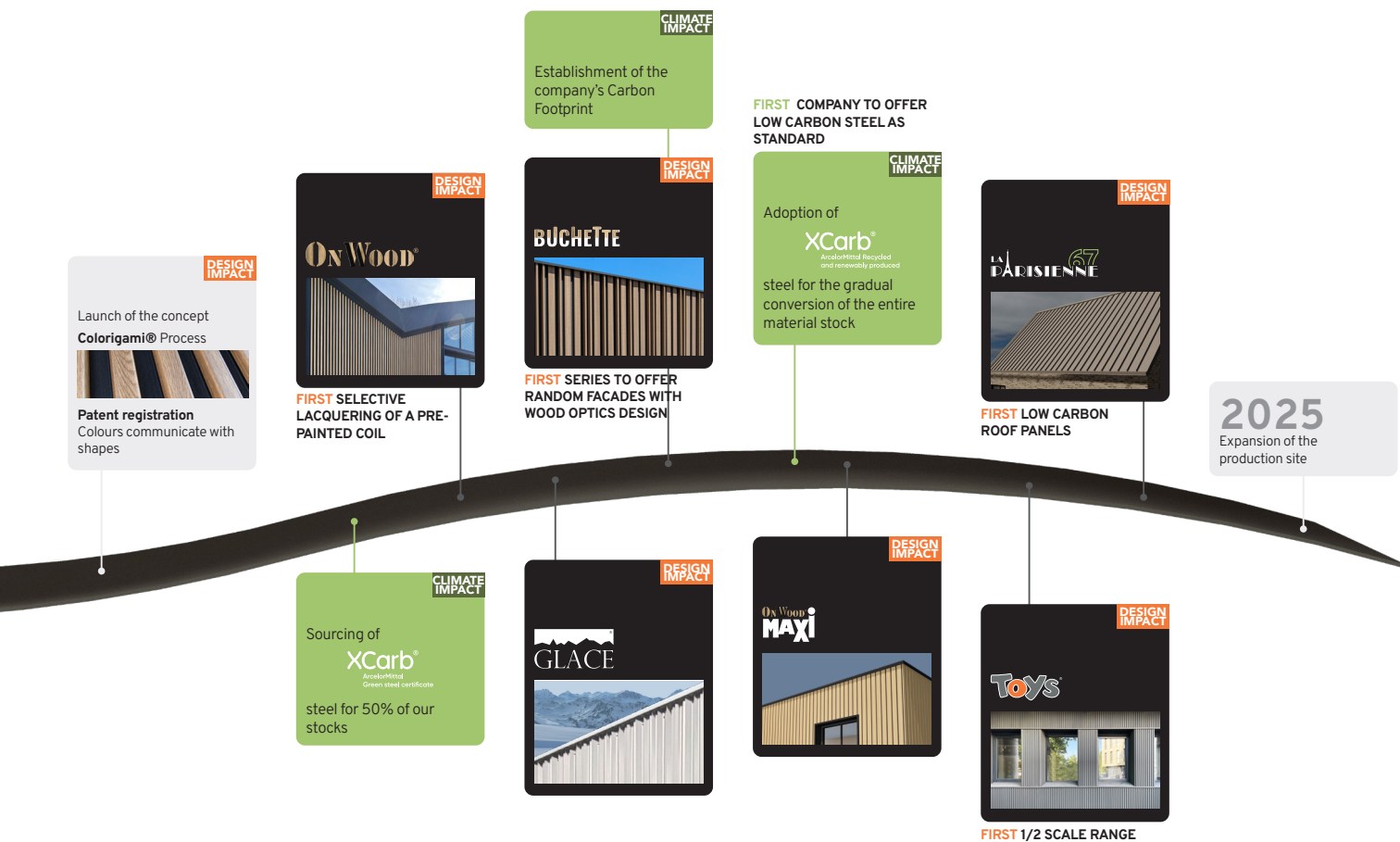
**As of 2024, we are the first company to offer the new low carbon steel as standard.** Climate concerns are not an option; by anticipating that the carbon footprint of any building will be a determining factor in its construction, we are offering our customers the opportunity to be in phase with future trends.”

# OUR

# STORY





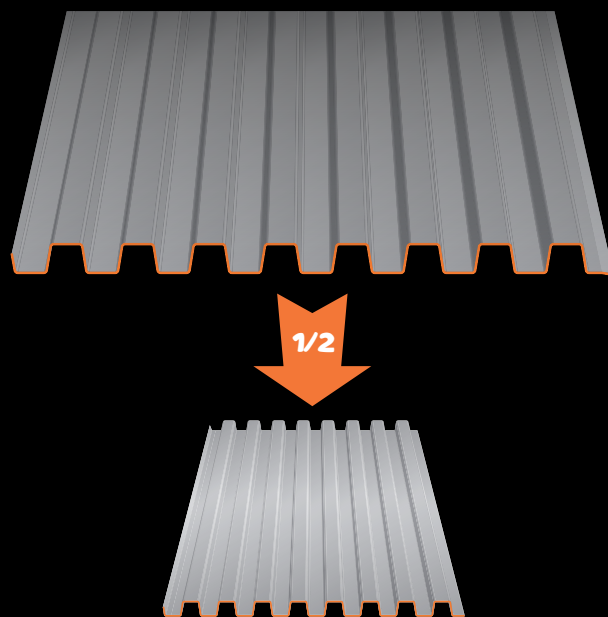








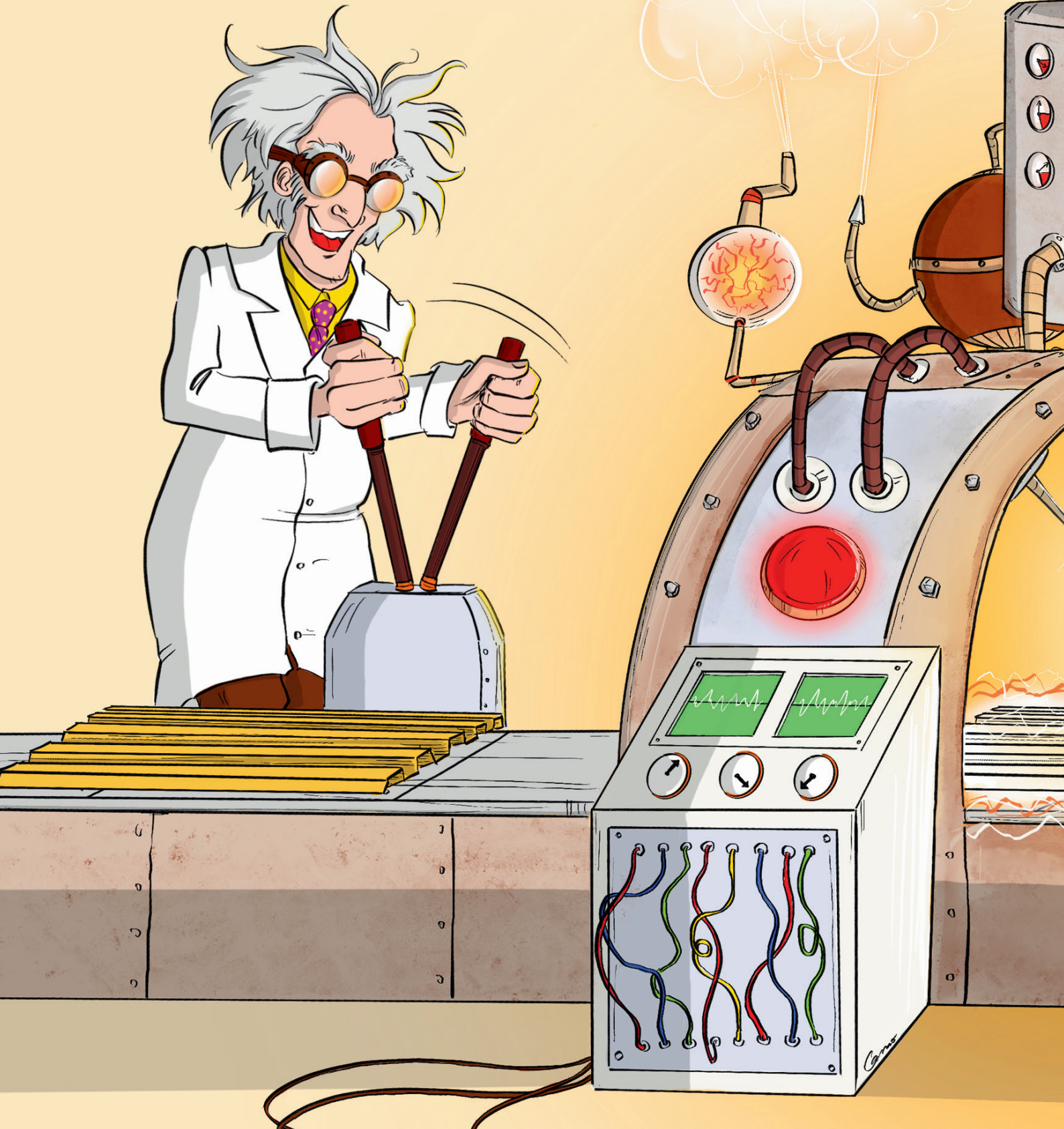
# Toys



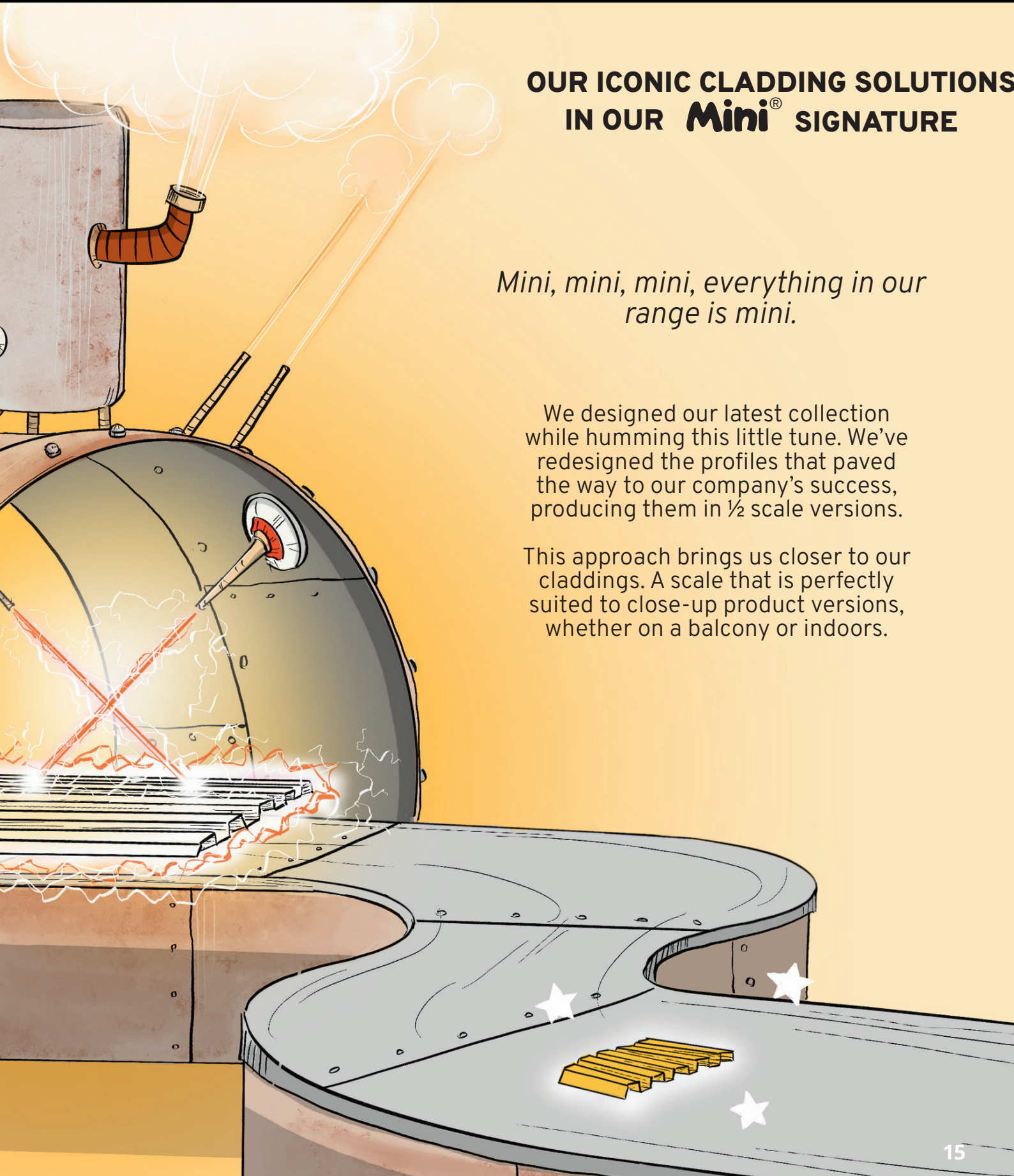
TOYS RANGE

# Toys

THE WORLD OF  AT 1/2 SCALE







## OUR ICONIC CLADDING SOLUTIONS IN OUR **Mini**<sup>®</sup> SIGNATURE

*Mini, mini, mini, everything in our  
range is mini.*

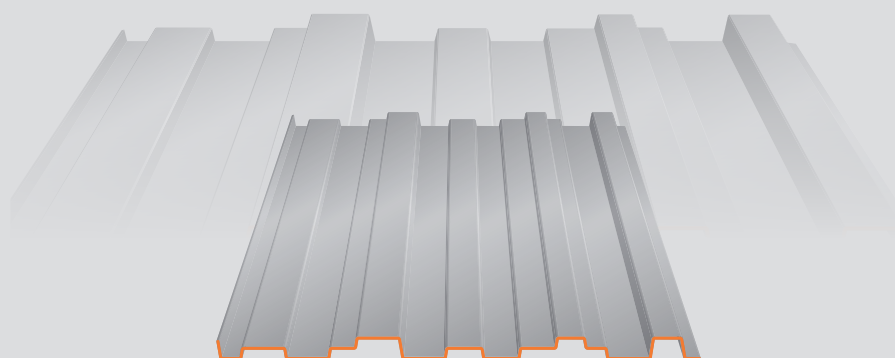
We designed our latest collection while humming this little tune. We've redesigned the profiles that paved the way to our company's success, producing them in ½ scale versions.

This approach brings us closer to our claddings. A scale that is perfectly suited to close-up product versions, whether on a balcony or indoors.

## BROOKLYN **MINI** 460



THE WORLD OF  AT **1/2** SCALE



### PROFILE BROOKLYN **MINI** 460

Material	Thickness (mm)	Weight (kg/m <sup>2</sup> )
Steel S280 GD + Z275	0.63	6.50

Coating	Norm
Galva	NF EN 10346
Polyester 35μ THD	Coil coating EN 10169
Polyurethane 50μ	Coil coating EN 10169
Post-coating 60μ	
Other coating	Upon request

**Profile height : 20 mm**

**Sheets length : 6000mm maximum**

REGISTERED  
DESIGNS

30-YEAR  
WARRANTY  
  
FIRE : A1  
IMPACT : Q4

TRADITIONAL  
INSTALLATION  
METHOD  
RÈGLES RAGE

MADE IN FRANCE

DWG, BIM,  
SKETCHUP FILES  
TO DOWNLOAD  
ON OUR WEBSITE

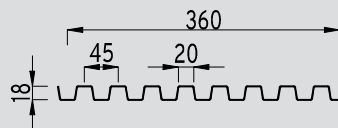
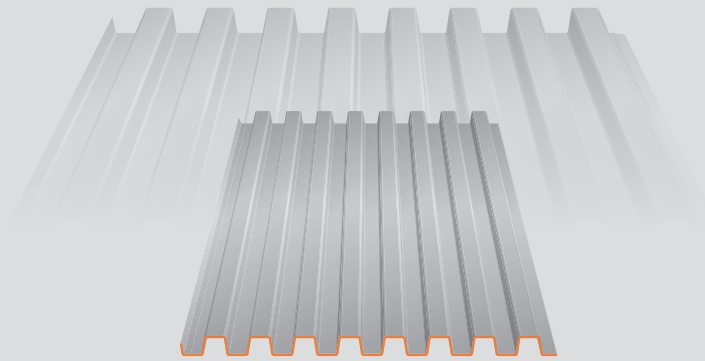


## NANO MINI 360



# Toys

THE WORLD OF  AT **1/2** SCALE



### PROFILE NANO MINI 360

Material	Thickness (mm)	Weight (kg/m <sup>2</sup> )
Steel S280 GD + Z275	0.63	8.31

**Profile height : 18 mm**

**Sheets length : 6000mm maximum**

Coating	Norm
Galva	NF EN 10346
Polyester 35μ THD	Coil coating EN 10169
Polyurethane 50μ	Coil coating EN 10169
Post-coating 60μ	
Other coating	Upon request

REGISTERED  
DESIGNS

30-YEAR  
WARRANTY  
  
FIRE : A1  
IMPACT : Q4

TRADITIONAL  
INSTALLATION  
METHOD  
RÈGLES RAGE

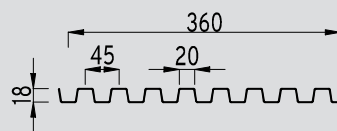
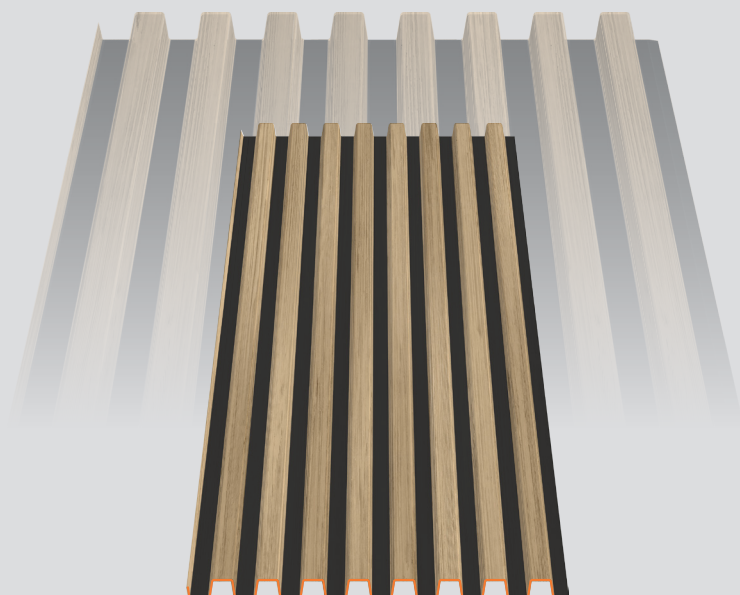
MADE IN FRANCE

DWG, BIM,  
SKETCHUP FILES  
TO DOWNLOAD  
ON OUR WEBSITE

## BARO MINI 360

# Toys

THE WORLD OF  AT **1/2** SCALE



### PROFILE BARO MINI 360

Material	Thickness (mm)	Weight (kg/m <sup>2</sup> )
Steel S280 GD + Z275	0.63	8.31

Coating	Norm
Galva	NF EN 10346
Polyester 47μ THD	Coil coating EN 10169

**Profile height : 18 mm**

**Sheets length : 6000mm maximum**

REGISTERED  
DESIGNS

30-YEAR  
WARRANTY  
  
FIRE : A1  
IMPACT : Q4

TRADITIONAL  
INSTALLATION  
METHOD  
RÈGLES RAGE

MADE IN FRANCE

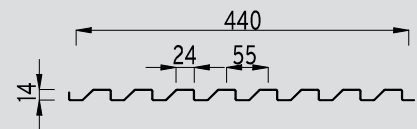
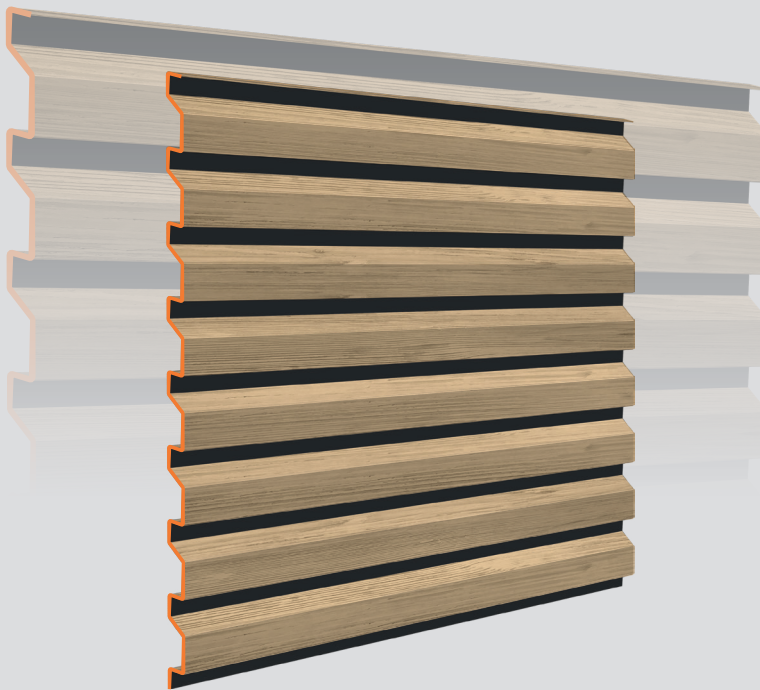
DWG, BIM,  
SKETCHUP FILES  
TO DOWNLOAD  
ON OUR WEBSITE



## CLAIREWOA **MINI** 440

# Toys

THE WORLD OF  AT **1/2** SCALE



### PROFILE CLAIREWOA **MINI** 440

Material	Thickness (mm)	Weight (kg/m <sup>2</sup> )
Steel S280 GD + Z275	0.63	6.80

Coating	Norm
Galva	NF EN 10346
Polyester 47μ THD	Coil coating EN 10169

**Profile height : 14 mm**

**Sheets length : 6000mm maximum**

REGISTERED  
DESIGNS

30-YEAR  
WARRANTY  
  
FIRE : A1  
IMPACT : Q4

TRADITIONAL  
INSTALLATION  
METHOD

MADE IN FRANCE

DWG, BIM,  
SKETCHUP FILES  
TO DOWNLOAD  
ON OUR WEBSITE

## CADENCE **MINI** CARRÉ



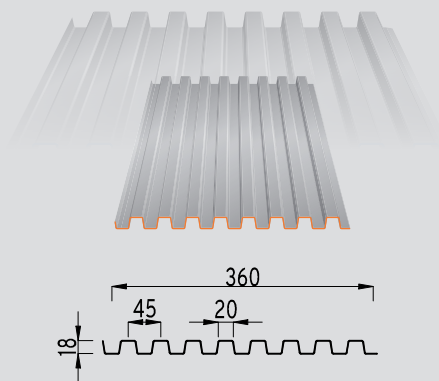
THE WORLD OF  AT **1/2** SCALE

### PROFILE CADENCE C **Mini 360**<sup>®</sup>

Material	Thickness (mm)	Weight (kg/m <sup>2</sup> )
Steel S280 GD + Z275	0.63	8.31

**Profile height : 18 mm**

**Sheets length : 6000mm maximum**

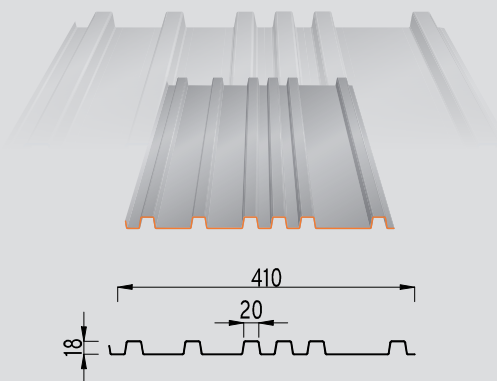


### PROFILE CADENCE C **Mini 410**<sup>®</sup>

Material	Thickness (mm)	Weight (kg/m <sup>2</sup> )
Steel S280 GD + Z275	0.63	7.30

**Profile height : 18 mm**

**Sheets length : 6000mm maximum**



Coating	Norm
Galva	NF EN 10346
Polyester 35μ THD	Coil coating EN 10169
Polyurethane 50μ	Coil coating EN 10169
Post-coating 60μ	
Other coating	Upon request

REGISTERED  
DESIGNS

30-YEAR  
WARRANTY

FIRE : A1  
IMPACT : Q4

TRADITIONAL  
INSTALLATION  
METHOD  
RÈGLES RAGE

MADE IN FRANCE

DWG, BIM,  
SKETCHUP FILES  
TO DOWNLOAD  
ON OUR WEBSITE



# CADENCE **MINI** TRIANGLE

# TOYS

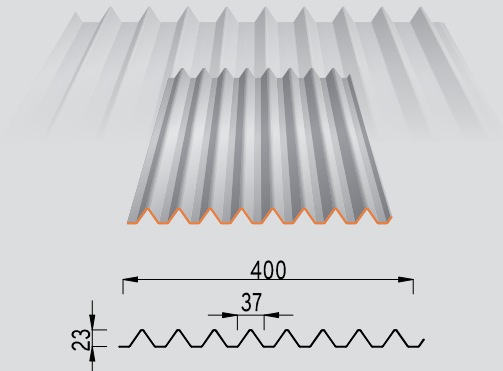
THE WORLD OF  AT **1/2** SCALE

## PROFILE CADENCE T **Mini 400**<sup>®</sup>

Material	Thickness (mm)	Weight (kg/m <sup>2</sup> )
Steel S280 GD + Z275	0.63	7.48

**Profile height : 23 mm**

**Sheets length : 6000mm maximum**

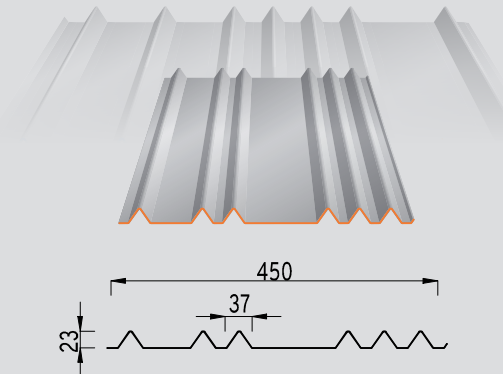


## PROFILE CADENCE T **Mini 450**<sup>®</sup>

Material	Thickness (mm)	Weight (kg/m <sup>2</sup> )
Steel S280 GD + Z275	0.63	6.65

**Profile height : 23 mm**

**Sheets length : 6000mm maximum**



Coating	Norm
Galva	NF EN 10346
Polyester 35μ THD	Coil coating EN 10169
Polyurethane 50μ	Coil coating EN 10169
Post-coating 60μ	
Other coating	Upon request

REGISTERED  
DESIGNS

30-YEAR  
WARRANTY

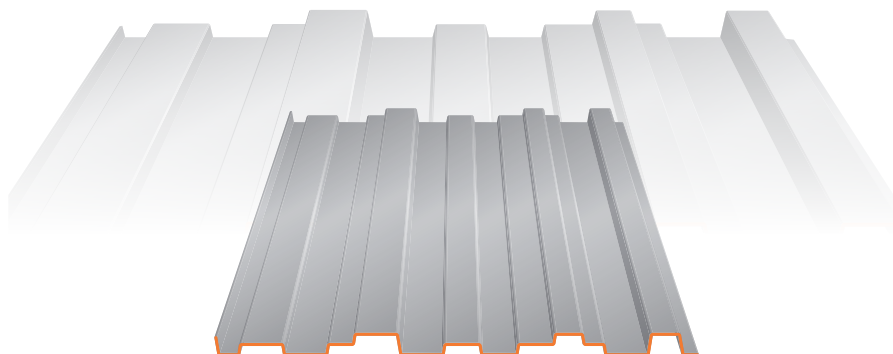
FIRE : A1  
IMPACT : Q4

TRADITIONAL  
INSTALLATION  
METHOD  
RÈGLES RAGE

MADE IN FRANCE

DWG, BIM,  
SKETCHUP FILES  
TO DOWNLOAD  
ON OUR WEBSITE

## BROOKLYN **MINI** 460



## LOAD CAPACITIES

SPAN TABLES IN DAN/M<sup>2</sup>, ACCORDING TO WIND LOAD

Limit deflection criterion taken into account: 1/150th according to French professional recommendations (RAGE) under wind load calculated as per NF EN 1991-1-4

PRESSURE			Span (m)	SUCTION		
2 supports	3 supports	4 supp. & +		2 supports	3 supports	4 supp. & +
476	476	488	1.0	507	418	428
358	397	407	1.2	293	349	357
225	340	349	1.4	185	299	298
151	298	245	1.6	124	261	199
106	239	172	1.8	87	193	140
77	174	125	2.0	63	140	102
58	131	94	2.2	48	106	77
45	101	73	2.4	37	81	59
35	79	57	2.6	29	64	46
28	63	46	2.8	23	51	37
23	52	37	3.0	19	42	30

Seismic validation: CSTB DCC/CLC\_12\_229\_1 study report of 02/25/2013

Test report n°R134294023-001-1



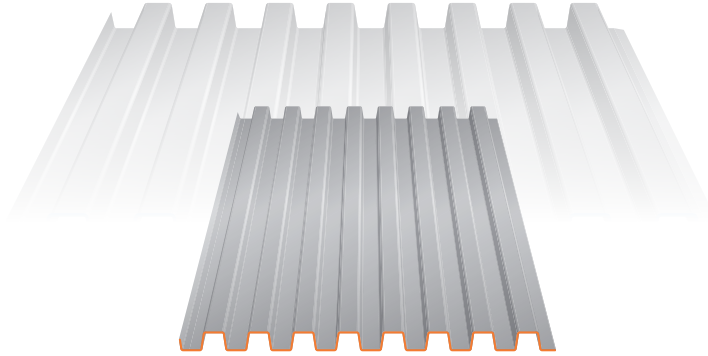
Test performed according to norm NF P 34-503-1 and interpretation as per Annexes E and N of the RAGE French professional recommendations

Technical information obtained according to installation requirements for metal cladding from July 2014.

The TOYS range metal sheets are non-structural sheets according to standard NF EN 14782:2006, as per RAGE Professional Recommendations for Cladding of July 2014, not intended to receive PPE anchoring devices according to EN 795 standard or lifelines.



## NANO MINI 360



### LOAD CAPACITIES

SPAN TABLES IN DAN/M², ACCORDING TO WIND LOAD

Limit deflection criterion taken into account: 1/150th according to French professional recommendations (RAGE) under wind load calculated as per NF EN 1991-1-4

PRESSURE		Span (m)	SUCTION	
2 supports	3 supports		2 supports	3 supports
572	925	1.0	572	875
331	642	1.2	331	608
209	472	1.4	209	447
140	361	1.6	140	342
98	255	1.8	98	255
72	186	2.0	72	186
54	140	2.2	54	140
41	108	2.4	41	108
33	85	2.6	33	85
26	68	2.8	26	68
21	55	3.0	21	55

Seismic validation: CSTB DCC/CLC\_12\_229\_1 study report of 02/25/2013

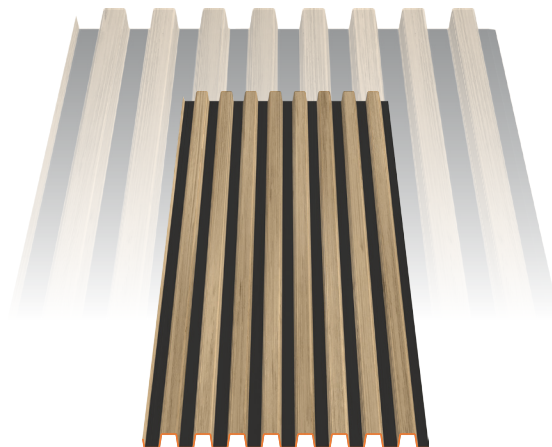


Calculation according to Eurocode III Part 1.3 (EN-1993)

Technical information obtained according to installation requirements for metal cladding from July 2014.

Technical information obtained according to installation requirements for metal cladding from July 2014.

## BARO MINI 360



## LOAD CAPACITIES

SPAN TABLES IN DAN/M<sup>2</sup>, ACCORDING TO WIND LOAD

Limit deflection criterion taken into account: 1/150th according to French professional recommendations (RAGE) under wind load calculated as per NF EN 1991-1-4

PRESSURE		Span (m)	SUCTION	
2 supports	3 supports		2 supports	3 supports
572	925	1.0	572	875
331	642	1.2	331	608
209	472	1.4	209	447
140	361	1.6	140	342
98	255	1.8	98	255
72	186	2.0	72	186
54	140	2.2	54	140
41	108	2.4	41	108
33	85	2.6	33	85
26	68	2.8	26	68
21	55	3.0	21	55

Seismic validation: CSTB DCC/CLC\_12\_229\_1 study report of 02/25/2013



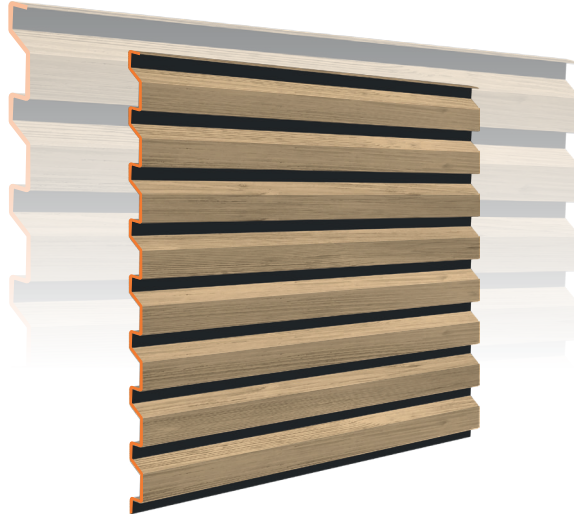
Calculation according to Eurocode III Part 1.3 (EN-1993)

Technical information obtained according to installation requirements for metal cladding from July 2014.

Technical information obtained according to installation requirements for metal cladding from July 2014.

The TOYS range metal sheets are non-structural sheets according to standard NF EN 14782:2006, as per RAGE Professional Recommendations for Cladding of July 2014, not intended to receive PPE anchoring devices according to EN 795 standard or lifelines.



**CLAIREWOA MINI 440****LOAD CAPACITIES**

SPAN TABLES IN DAN/M<sup>2</sup>, ACCORDING TO WIND LOAD

Limit deflection criterion taken into account: 1/150th according to French professional recommendations (RAGE) under wind load calculated as per NF EN 1991-1-4

PRESSURE			Span (m)	SUCTION		
2 supports	3 supports	4 supp. & +		2 supports	3 supports	4 supp. & +
448	746	754	1.0	364	721	656
259	548	436	1.2	211	515	380
163	345	275	1.4	133	325	239
109	231	184	1.6	89	217	160
77	162	129	1.8	62	153	112
56	118	94	2.0	45	111	82
42	89	71	2.2	34	84	62
32	68	55	2.4	26	64	47
25	54	43	2.6	21	51	37
20	43	34	2.8	17	41	30
17	35	28	3.0	13	33	24

Seismic validation: CSTB DCC/CLC\_12\_229\_1 study report of 02/25/2013

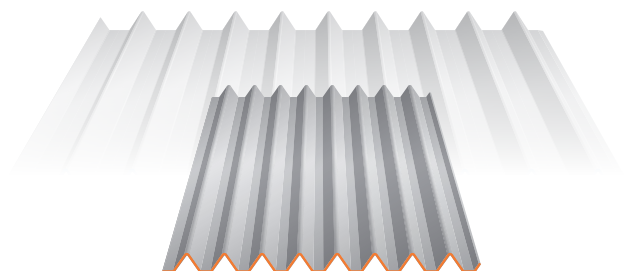
Test report n°R134690349-001-1



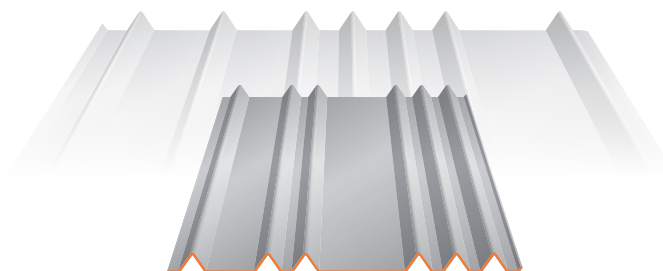
Test performed according to norm NF P 34-503-1 and interpretation as per Annexes E and N of the RAGE French professional recommendations

Technical information obtained according to installation requirements for metal cladding from July 2014.

## CADENCE T **MINI** 400



## CADENCE T **MINI** 450



## LOAD CAPACITIES

SPAN TABLES IN DAN/M<sup>2</sup>, ACCORDING TO WIND LOAD

Limit deflection criterion taken into account: 1/150th according to French professional recommendations (RAGE) under wind load calculated as per NF EN 1991-1-4

PRESSURE			Span (m)	SUCTION		
2 supports	3 supports	4 supp. & +		2 supports	3 supports	4 supp. & +
659	664	727	1.0	420	421	460
381	554	606	1.2	243	351	384
240	475	416	1.4	153	301	319
161	362	279	1.6	103	263	213
113	254	196	1.8	72	232	150
82	185	143	2.0	52	169	109
62	139	107	2.2	39	127	82
48	107	83	2.4	30	98	63
37	84	65	2.6	24	77	50
30	67	52	2.8	19	62	40
24	55	42	3.0	16	50	32

Seismic validation: CSTB DCC/CLC\_12\_229\_1 study report of 02/25/2013

Test report n°R134661203-001-1



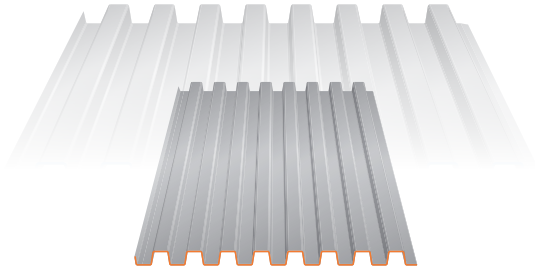
Test performed according to norm NF P 34-503-1 and interpretation as per Annexes E and N of the RAGE French professional recommendations

Technical information obtained according to installation requirements for metal cladding from July 2014.

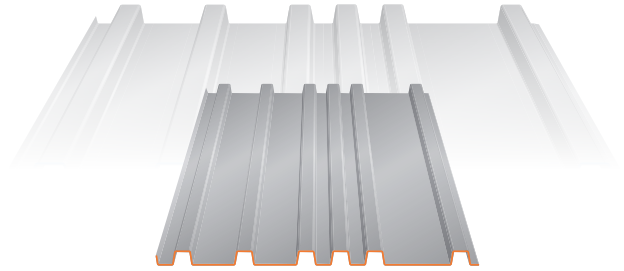
The TOYS range metal sheets are non-structural sheets according to standard NF EN 14782:2006, as per RAGE Professional Recommendations for Cladding of July 2014, not intended to receive PPE anchoring devices according to EN 795 standard or lifelines.



## CADENCE C **MINI** 360



## CADENCE C **MINI** 410



## LOAD CAPACITIES

SPAN TABLES IN DAN/M<sup>2</sup>, ACCORDING TO WIND LOAD

Limit deflection criterion taken into account: 1/150th according to French professional recommendations (RAGE) under wind load calculated as per NF EN 1991-1-4

PRESSURE			Span (m)	SUCTION		
2 supports	3 supports	4 supp. & +		2 supports	3 supports	4 supp. & +
597	597	612	1.0	521	478	489
426	498	510	1.2	301	398	408
269	427	422	1.4	190	341	320
180	327	283	1.6	127	299	215
126	259	198	1.8	89	219	151
92	193	145	2.0	65	159	110
69	145	109	2.2	49	120	83
53	112	84	2.4	38	92	64
42	88	66	2.6	30	73	50
34	70	53	2.8	24	58	40
27	57	43	3.0	19	47	33

Seismic validation: CSTB DCC/CLC\_12\_229\_1 study report of 02/25/2013

Test report n°R134294625-001-1



Test performed according to norm NF P 34-503-1 and interpretation as per Annexes E and N of the RAGE French professional recommendations

Technical information obtained according to installation requirements for metal cladding from July 2014.





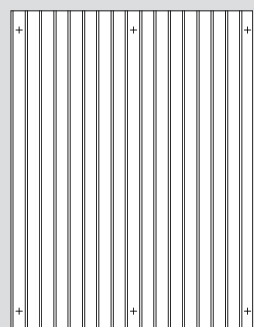


# INSTALLATION

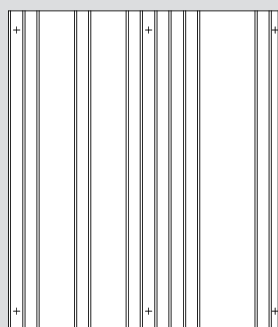
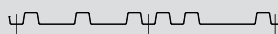


## FIXING THE PANELS

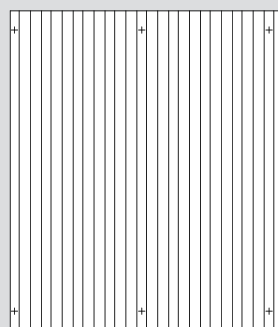
### CADENCE



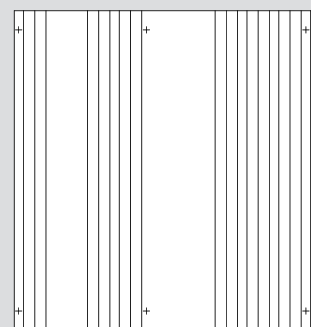
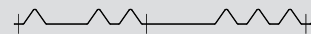
CADENCE **Mini** 360C®



CADENCE **Mini** 410C®

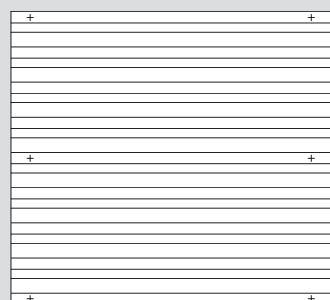


CADENCE **Mini** 400T®

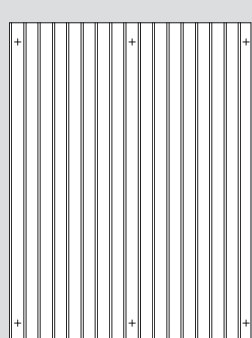
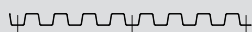
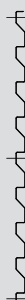


CADENCE **Mini** 450T®

### OnWood®

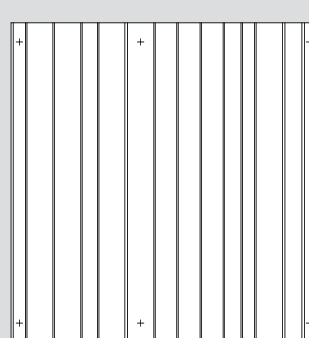
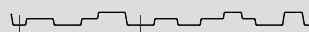


ONWOOD CLAIREWOA **Mini** 440®



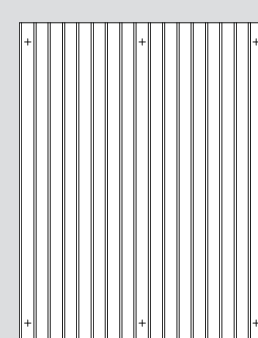
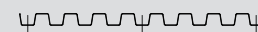
ONWOOD BARO **Mini** 360®

### NEW YORK



BROOKLYN **Mini** 460®

### RELIEF® BY STARCK®

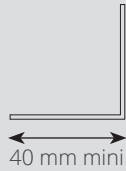


NANO **Mini** 360®

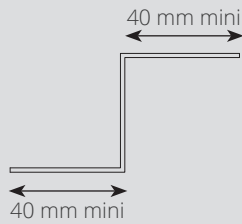
Given the small size of the TOYS range ribs bottoms, it is highly recommended to first check the compatibility of the screw heads with the selected cladding model.

## SECONDARY FRAMING

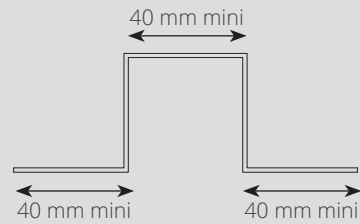
Metal framing «L»



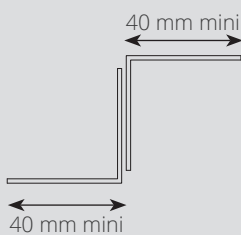
Metal framing «Z»



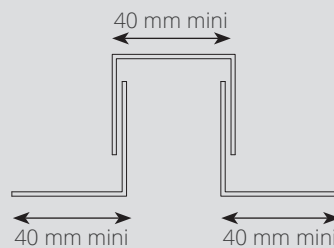
Metal framing «Ω»



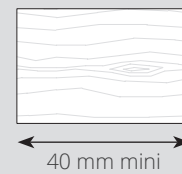
Ajustable metal framing «Z»



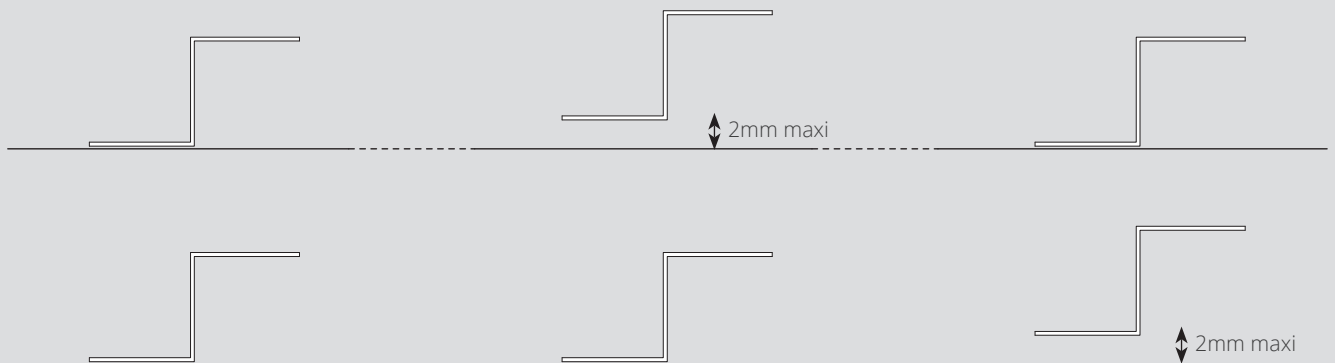
Ajustable metal framing «Ω»



Timber frame



## FLATNESS OF SUPPORT

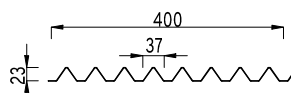
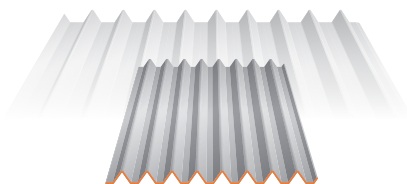


The secondary framing elements must be sized by the installation company. Metal framing should be at least 1.5mm thick.

The flatness of the support is essential when installing the panels.

Regardless of the type of secondary framework chosen (metal or wood), it must comply with a maximum permissible co-planarity of 2mm over three **e supports**.

## CADENCE

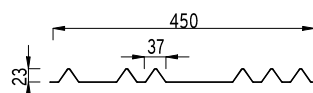
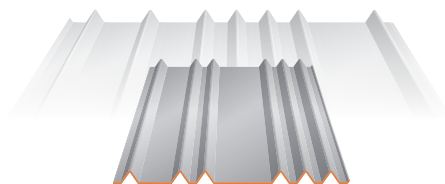


CADENCE **Mini 400T**®

Effective width : 400 mm  
Height : 22 mm

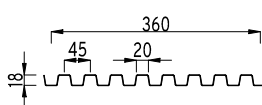
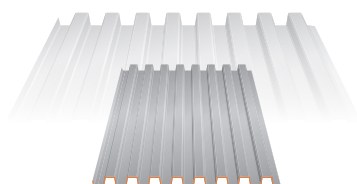
REFER TO  
CADENCE INSTALLATION GUIDE

See [www.ateliers3s.com](http://www.ateliers3s.com)  
In Downloads section



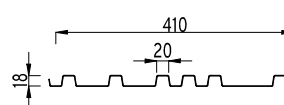
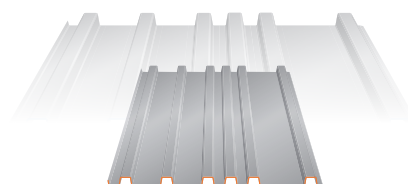
CADENCE **Mini 450T**®

Effective width : 450 mm  
Height : 22 mm



CADENCE **Mini 360C**®

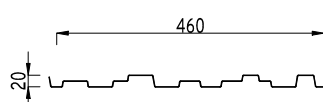
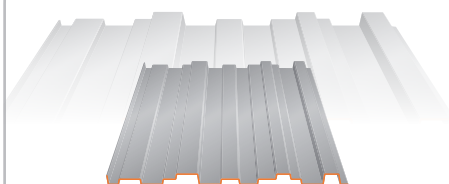
Effective width : 360 mm  
Height : 18 mm



CADENCE **Mini 410C**®

Effective width : 410 mm  
Height : 18 mm

## NEW YORK



BROOKLYN **Mini 460**®

Effective width : 460 mm  
Height : 20 mm

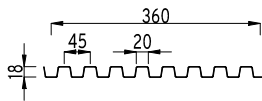
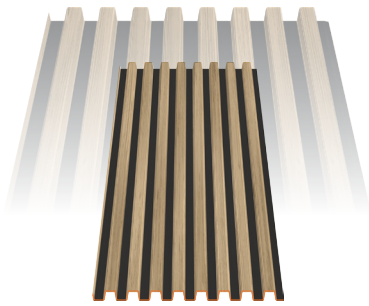
REFER TO  
NEW YORK INSTALLATION GUIDE

See [www.ateliers3s.com](http://www.ateliers3s.com)  
In Downloads section





## OnWood®

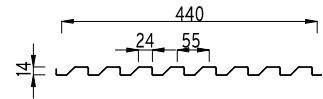
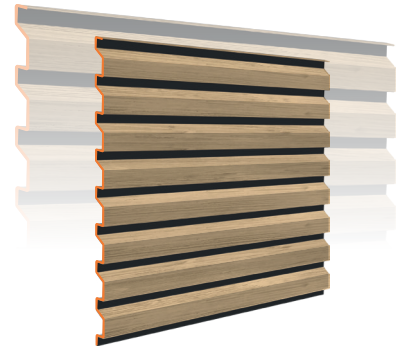


ONWOOD BARO **Mini** 360®

Effective width : 360 mm  
Height : 18 mm

REFER TO  
ONWOOD INSTALLATION  
GUIDE

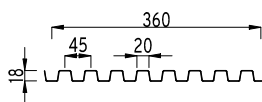
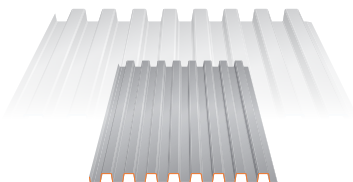
See [www.ateliers3s.com](http://www.ateliers3s.com)  
In Downlaods section



ONWOOD CLAIREWOA **Mini** 440®

Effective width : 440 mm  
Height : 14 mm

## RELIEF® by STARCK®



NANO **Mini** 360®

Effective width : 360 mm  
Height : 18 mm

REFER TO  
RELIEF INSTALLATION GUIDE

See [www.ateliers3s.com](http://www.ateliers3s.com)  
In Downlaods section









# PROJECTS GALLERY





Chantier PIM ATOLL - Clermont-Ferrand (63) - Pose SLEICO



Chantier PIM ATOLL - Clermont-Ferrand (63) - Pose SLEICO





Siège FIMAVI







COLOR CHART

## Colours and materials **used**

### ORIGINAL

Available in  
0.75 mm

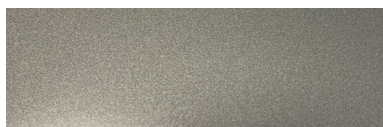
Exclusive, ultra resistant colours that meet the requirements of the 3S® range.

#### METALLIC



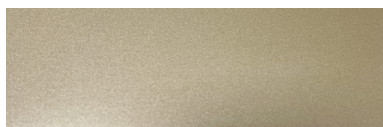
METAL 0207

35µm



PEARL 0208

35µm



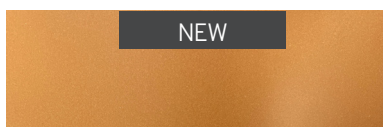
PLATINUM 0206

35µm



INTENSE GOLD 6995

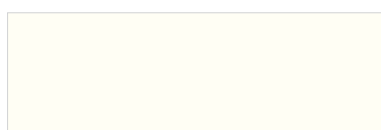
35µm



COPPER 0603

35µm

#### SATIN



COTTON 0201

35µm



RAL 5008 - OCEAN

35µm



DUVET 0202

35µm



RAL 7032 - SILEC GREY

25µm



POWDER 0203

35µm



RAL 7022 - EGGSHELL

35µm



RAL 7037

25µm



POP 0204

35µm



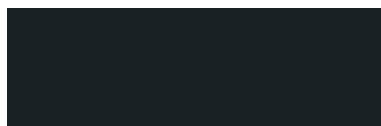
RAL 7016 - ANTHRACITE GREY

25µm



SPRING 0205

35µm



RAL 7021 - BLACK GREY

25µm



RAL 9005 - DEEP BLACK

25µm



Please contact us for further information on our RAL colour chart and our special custom-designed textured coatings.

# Colours and materials **used**

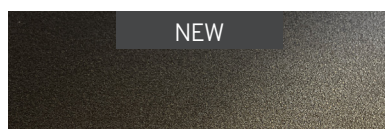
## MATERIALS

Coatings that are as fabulous as the materials.

Available in  
0.75 mm



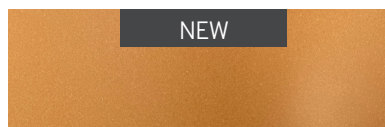
OXYDE 0602 35µm



DARK BRONZE 0604 50µm



INTENSE GOLD 6995 35µm

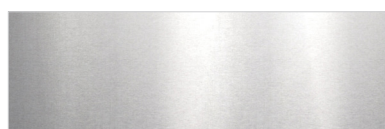


COPPER 0603 35µm

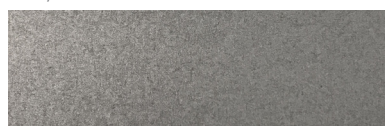
## ROUGH

Reveal the nobility of raw materials.

Available in  
0.75 mm



STAINLESS STEEL 0302  
Shiny

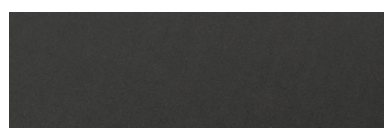


SURFACE GRAIN 0301  
Galvanized steel with high-precision grain

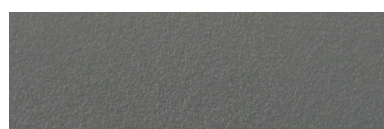
## ZINC SPIRIT

Deep matte and very fine texture for a true-to-life zinc effect.

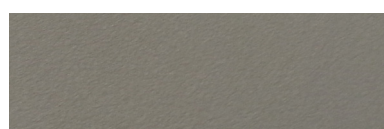
Available in  
1.00 - 0.75 mm



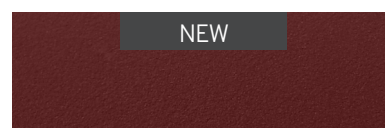
NERRO 0104 50µm



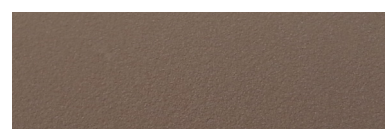
GALEO 0103 50µm



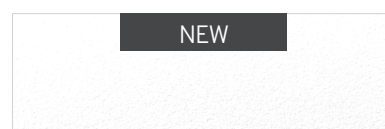
AZURO 0102 50µm



VINO 0106 50µm



VOLCANO 0101 50µm

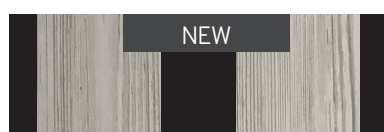


BIANCO 0105 50µm

## ONWOOD

True-to-life matte wood texture. Available in all wood finish or with optional black strips "Colorigami® Process".

Available in  
0.75 mm



SILVER TECK (BLACK BANDS) 0409 47µm



SILVER TECK (ALL WOOD) 0408 47µm



NATURAL OAK (BLACK BANDS) 0406 47µm  
Also available in 0.63 mm  
0416 (MINI)  
0426 (MAXI)



NATURAL OAK (ALL WOOD) 0403 47µm



HAZELNUT OAK (BLACK BANDS) 0405 47µm



HAZELNUT OAK (ALL WOOD) 0402 47µm

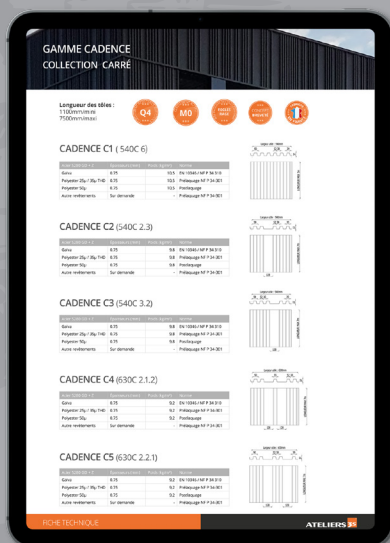


COFFEE OAK (BLACK BANDS) 0407 47µm



COFFEE OAK (ALL WOOD) 0404 47µm





- TECHNICAL DATASHEETS
- INSTALLATION INSTRUCTIONS
- GUIDES TO FINISHING FOLDS
- CCTP (SPECIAL TECHNICAL SPECIFICATIONS)
- FILES DWG, BIM, SKETCHUP
- ETC.

Find us at:  
[www.ateliers3s.com](http://www.ateliers3s.com)



**VISIT OUR SHOWROOM**

100 AVENUE DAUMESNIL 75012 PARIS - FRANCE

GRUPE



**FIMAVI**

T O Y S 2 0 2 5

**ATELIERS**   
metal cladding creators

Rue verte, ZI Ladoux - F-63118 Cébazat - France  
T. +33(0)4 73 88 59 50  
contact@ateliers3s.com - [www.ateliers3s.com](http://www.ateliers3s.com)

04/08/2025