

epure

standing seam attitude



SUMMARY

EPURE

EPURE	4
CONCEPT.....	6
SIDINGS	8
EPURE CDB 200.....	10
EPURE CDB 250.....	12
EPURE CDB 300.....	14
EPURE CDB 333.....	16
EPURE CDB 400.....	18
SPAN TABLES.....	20
INSTALLATION	22
FINISHING PROFILES	36
PROJECTS GALLERY	46
COLOR CHART	48





epure

EPURE RANGE

epure

standing seam attitude

An exclusive range of standing seam panels with exclusive matte colours for a true-to-life zinc look.

5 designs for a rhythmic or random facade.

The simplicity of a self-supporting steel panel, the beauty of zinc.

Rythm

Crescendo



5
PANELS

5
WIDTHS

4
COLOURS

For endless possibilities

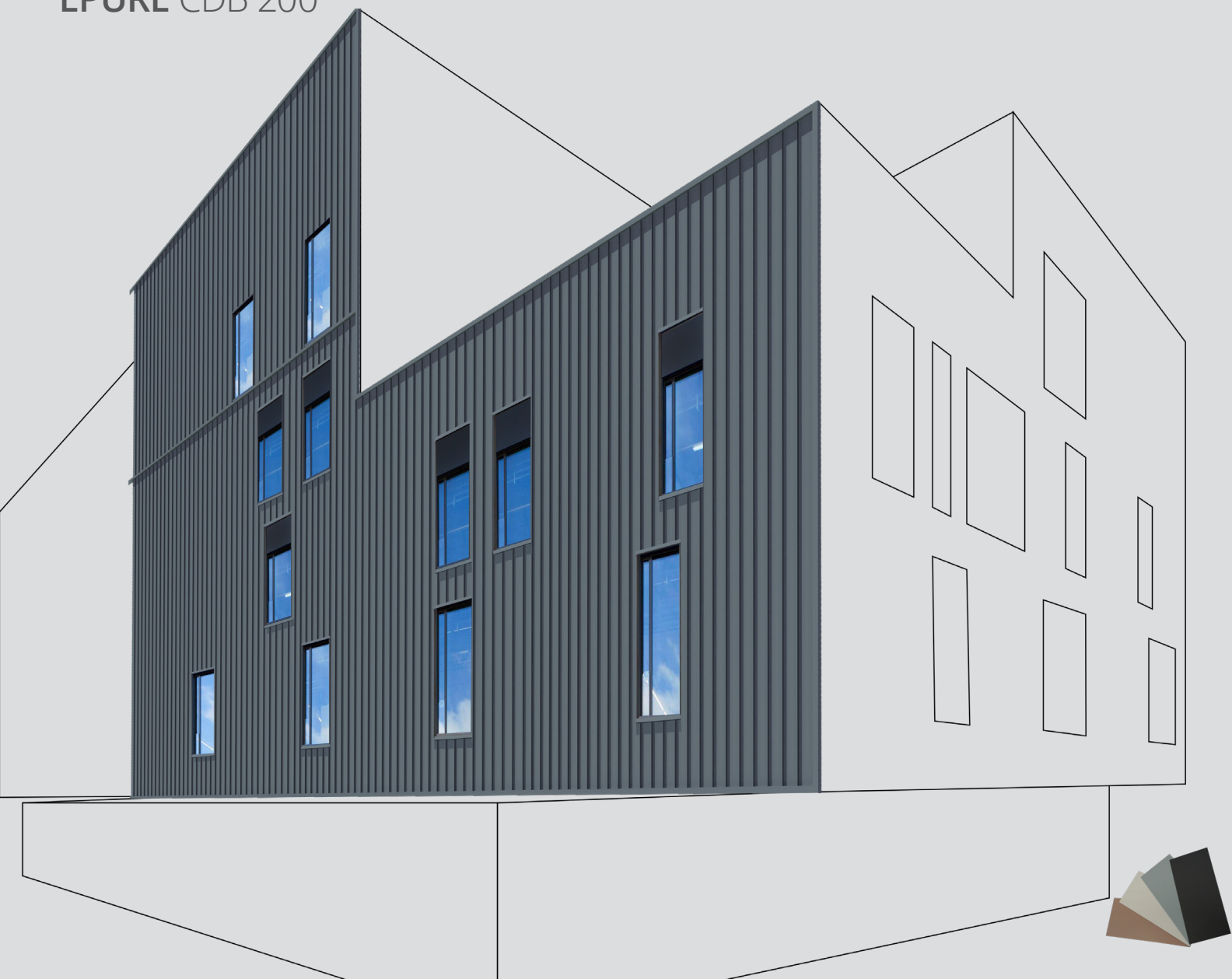
Random

Regular



SIDING

EPURE CDB 200



EPURE CDB 200

Material	Effective width (mm)	Thickness (mm)	Weight (kg/m²)
Acier S320 GD + Z275	200	1.0	13.7

Coating	Norm
Polyurethane 50μ	Coil coating EN 10169
Post-coating 60μ	
Other coating	Upon request

Profile height : 55 mm

Sheets length : 6000mm maximum

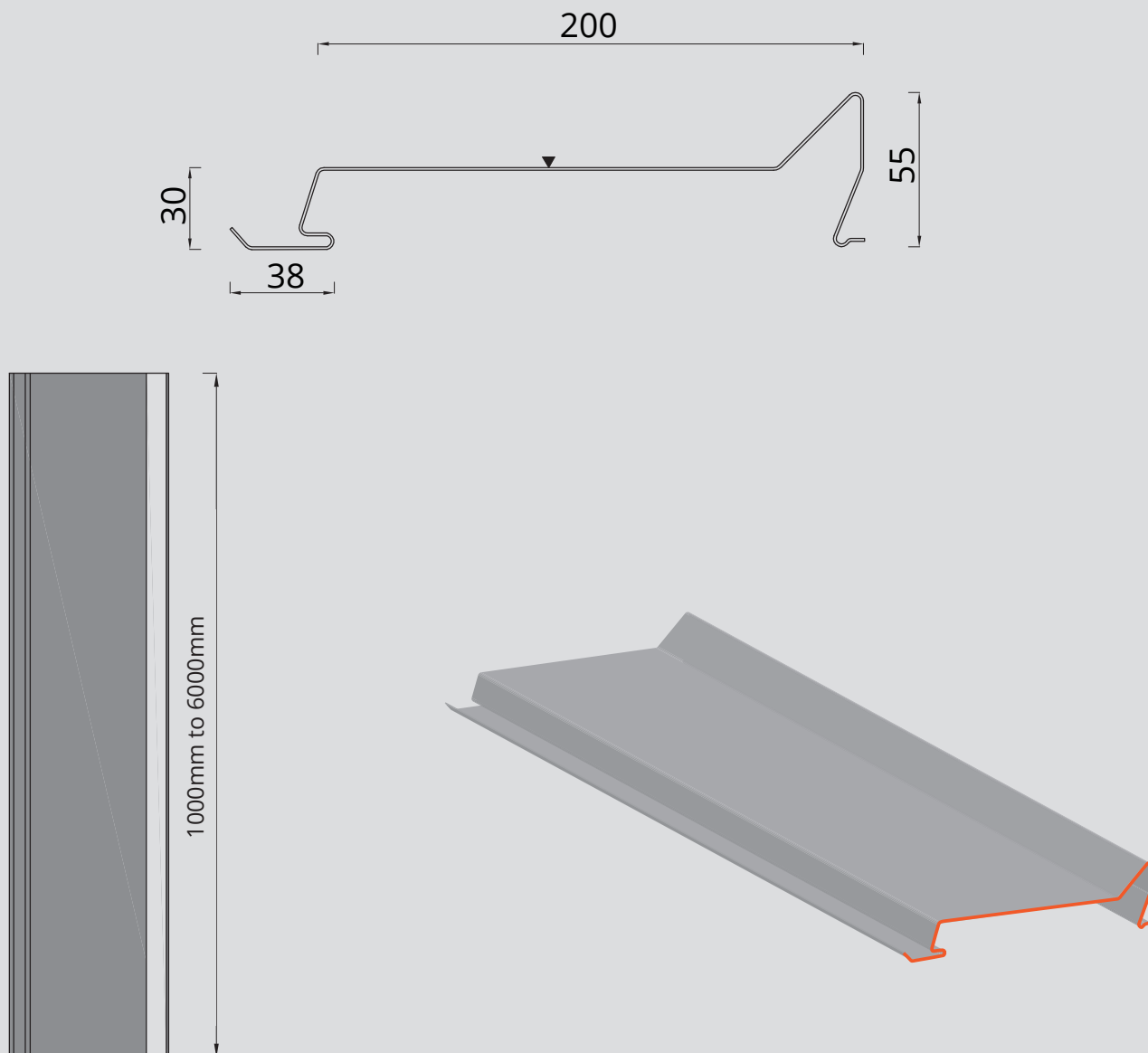
REGISTERED
DESIGNS

30-YEAR WARRANTY
FIRE : A1
IMPACT : Q4

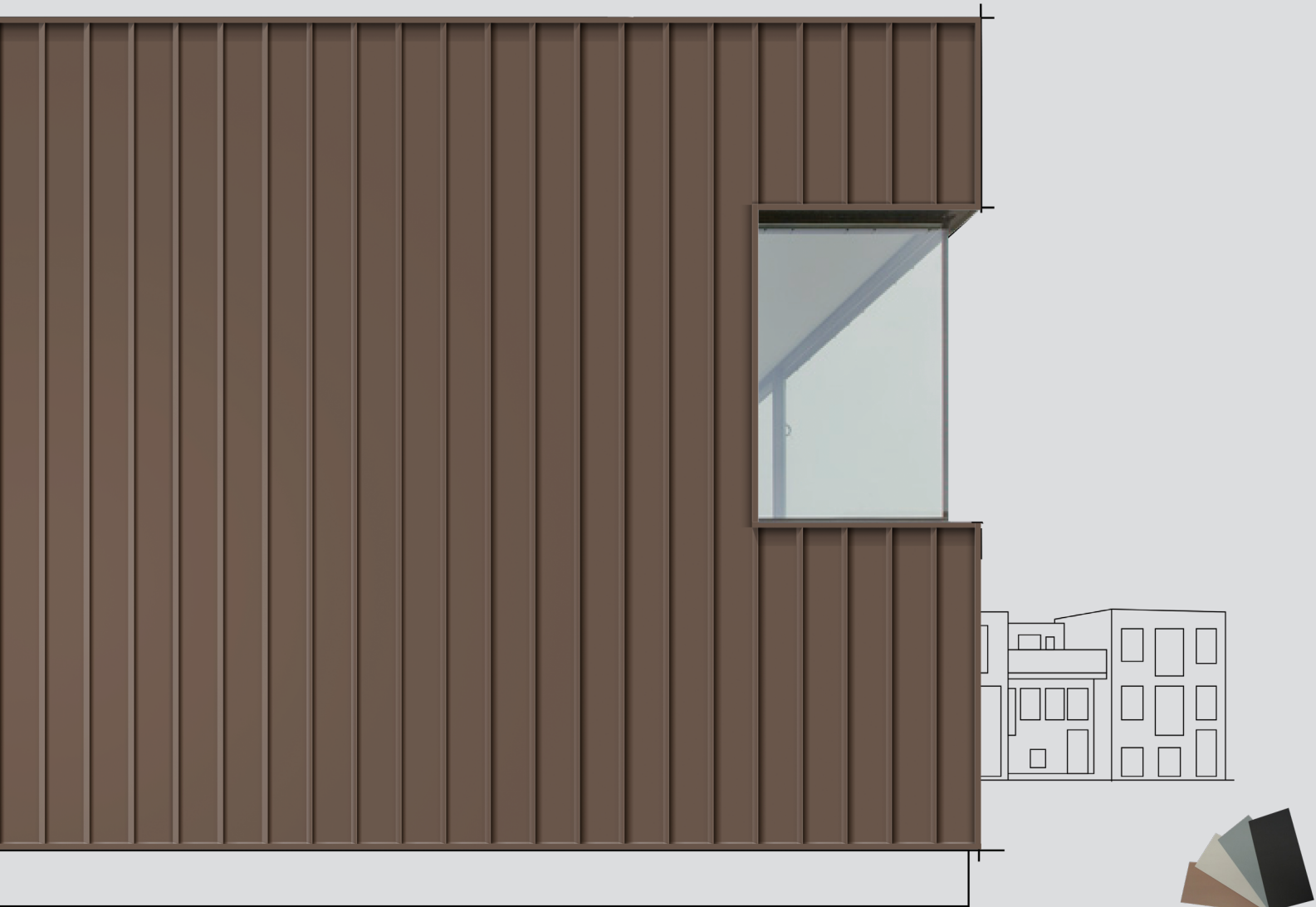
TRADITIONAL
INSTALLATION
METHOD
CSTB 3747

MADE IN FRANCE

DWG, BIM,
SKETCHUP FILES
TO DOWNLOAD
ON OUR WEBSITE



EPURE CDB 250



EPURE CDB 250

Material	Effective width (mm)	Thickness (mm)	Weight (kg/m²)
Acier S320 GD + Z275	250	1.0	12.5

Coating	Norm
Polyurethane 50µ	Coil coating EN 10169
Post-coating 60µ	
Other coating	Upon request

Profile height : 55 mm
Sheets length : 6000mm maximum

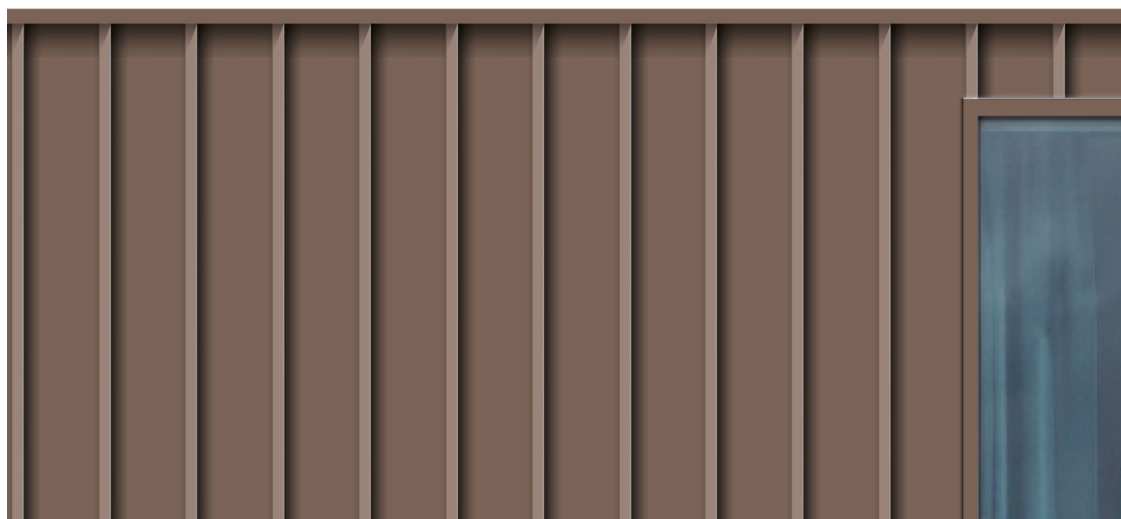
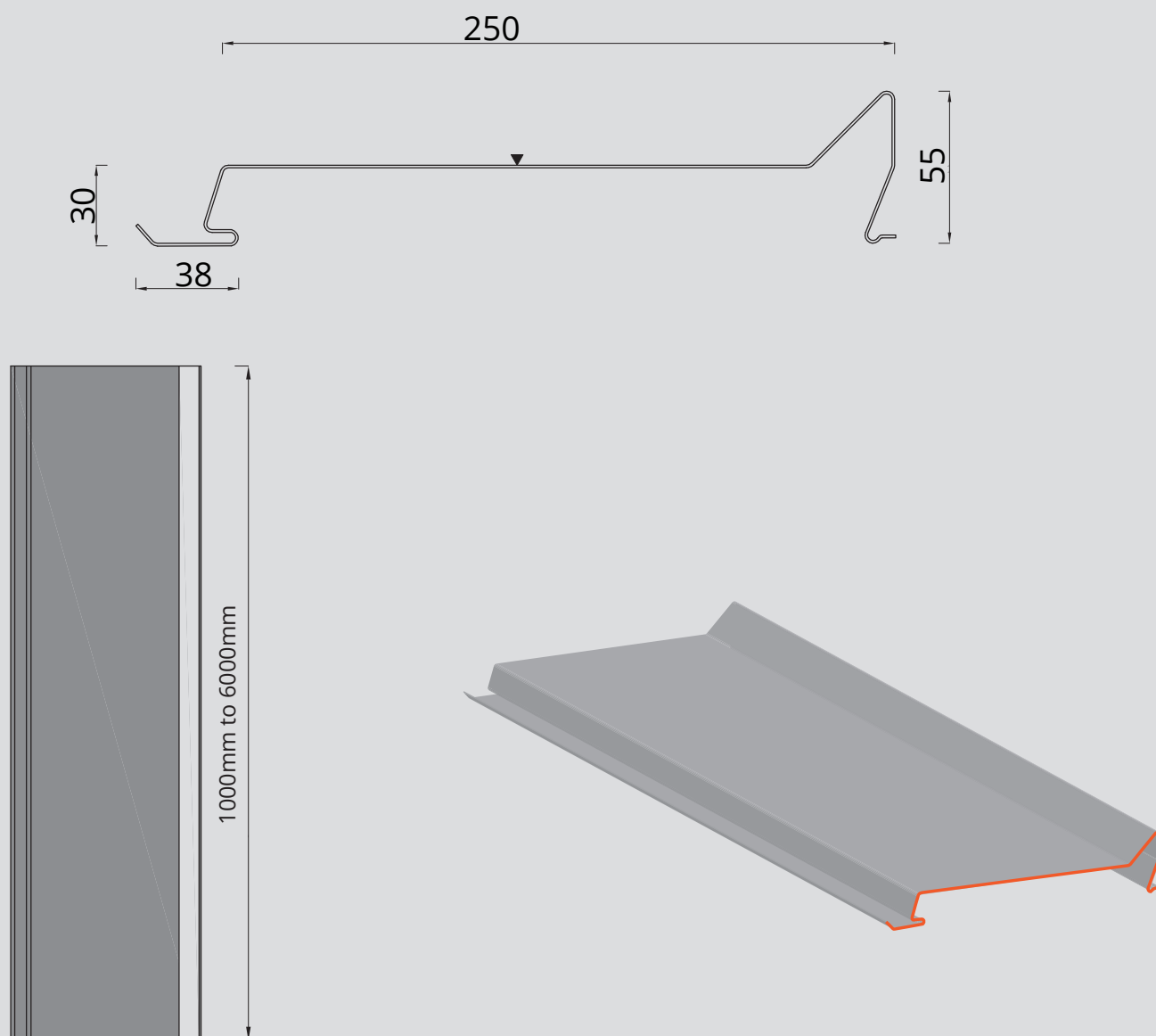
REGISTERED
DESIGNS

30-YEAR WARRANTY
FIRE : A1
IMPACT : Q4

TRADITIONAL
INSTALLATION
METHOD
CSTB 3747

MADE IN FRANCE

DWG, BIM,
SKETCHUP FILES
TO DOWNLOAD
ON OUR WEBSITE



EPURE CDB 300



EPURE CDB 300

Material	Effective width (mm)	Thickness (mm)	Weight (kg/m ²)
Acier S320 GD + Z275	300	1.0	11.8

Coating	Norm
Polyurethane 50μ	Coil coating EN 10169
Post-coating 60μ	
Other coating	Upon request

Profile height : 55 mm

Sheets length : 6000mm maximum

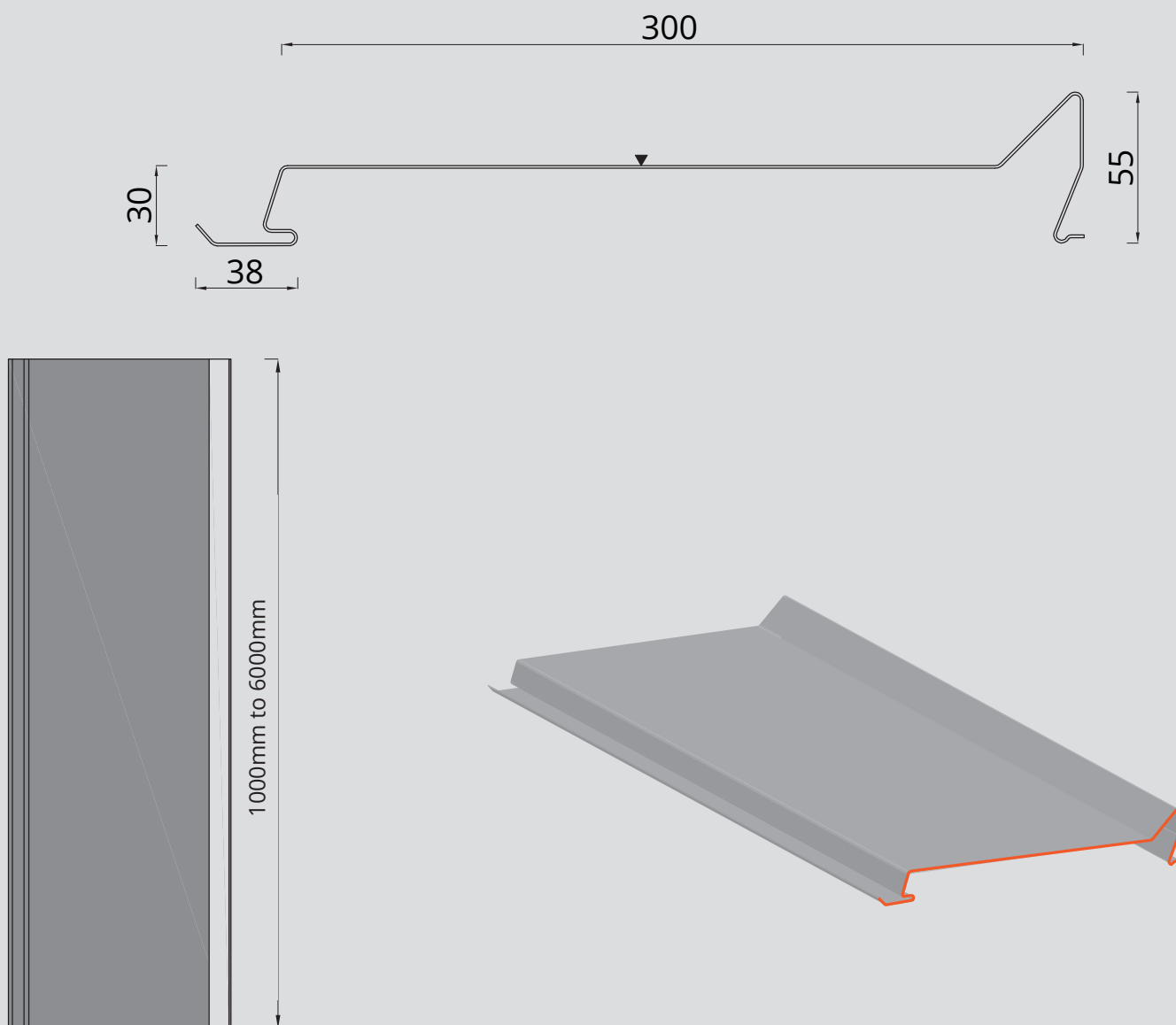
REGISTERED
DESIGNS

30-YEAR WARRANTY
FIRE : A1
IMPACT : Q4

TRADITIONAL
INSTALLATION
METHOD
CSTB 3747

MADE IN FRANCE

DWG, BIM,
SKETCHUP FILES
TO DOWNLOAD
ON OUR WEBSITE



EPURE CDB 333



EPURE CDB 333

Material	Effective width (mm)	Thickness (mm)	Weight (kg/m ²)
Acier S320 GD + Z275	333	1.0	11.32

Coating	Norm
Polyurethane 50μ	Coil coating EN 10169
Post-coating 60μ	
Other coating	Upon request

Profile height : 55 mm

Sheets length : 6000mm maximum

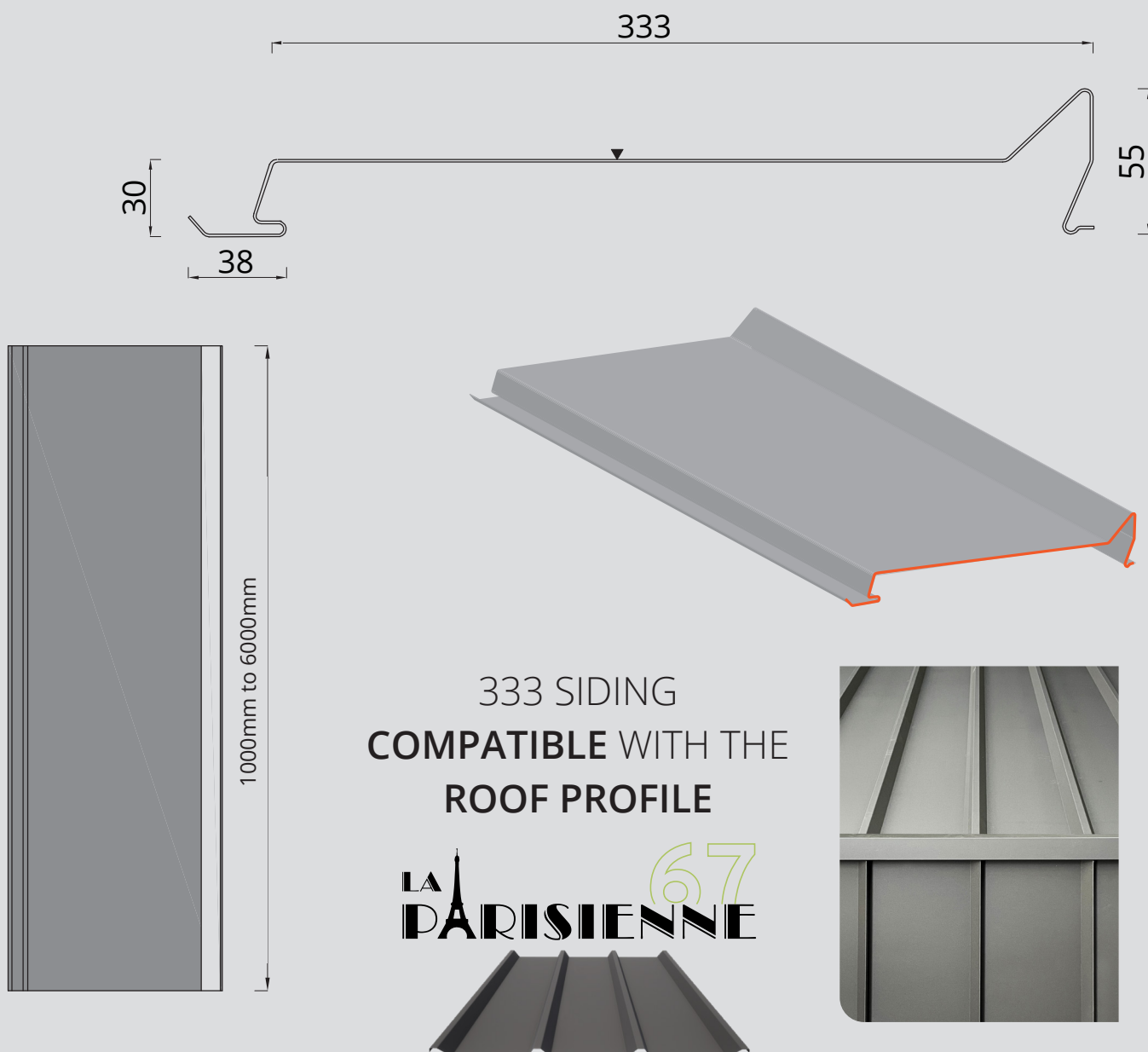
REGISTERED
DESIGNS

30-YEAR WARRANTY
FIRE : A1
IMPACT : Q4

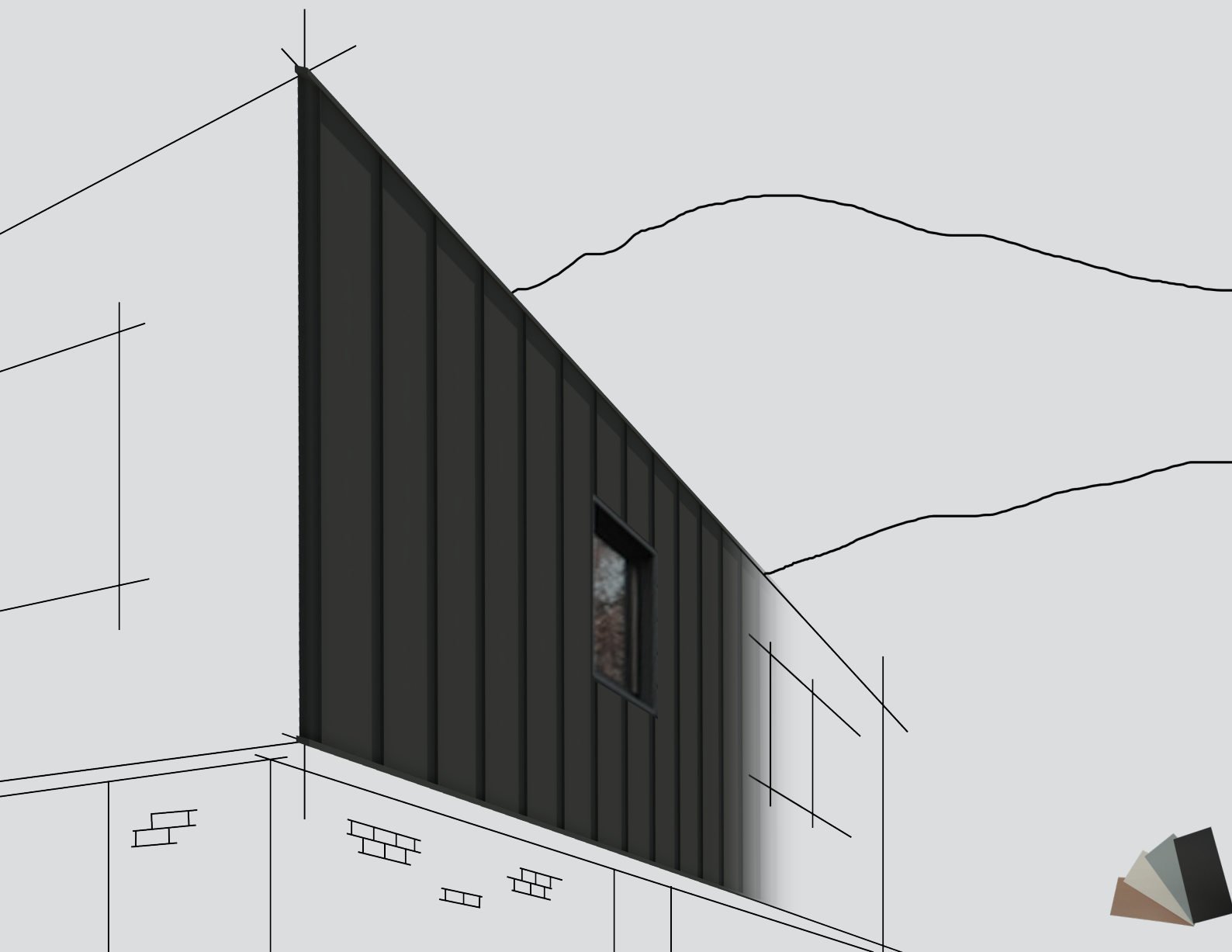
TRADITIONAL
INSTALLATION
METHOD
CSTB 3747

MADE IN FRANCE

DWG, BIM,
SKETCHUP FILES
TO DOWNLOAD
ON OUR WEBSITE



EPURE CDB 400



EPURE CDB 400

Material	Effective width (mm)	Thickness (mm)	Weight (kg/m²)
Acier S320 GD + Z275	400	1.0	10.8

Coating	Norm
Polyurethane 50μ	Coil coating EN 10169
Post-coating 60μ	
Other coating	Upon request

Profile height : 55 mm

Sheets length : 6000mm maximum

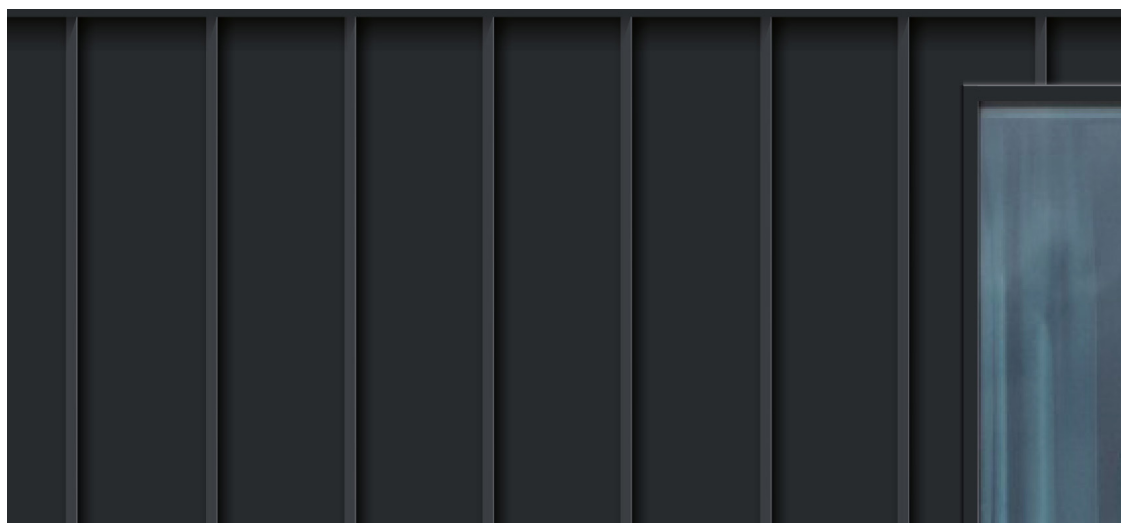
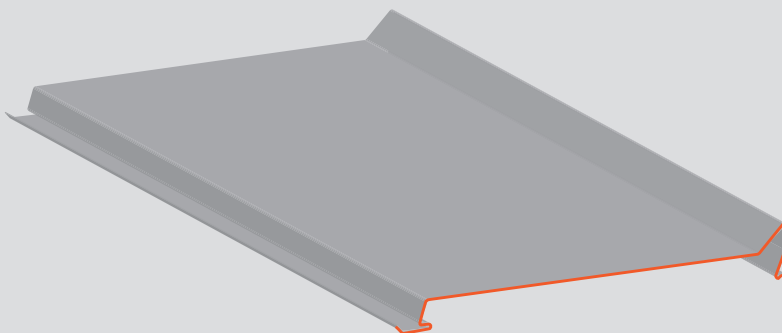
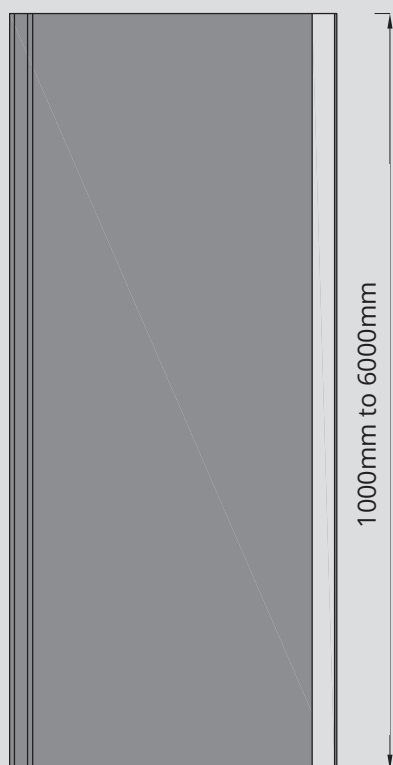
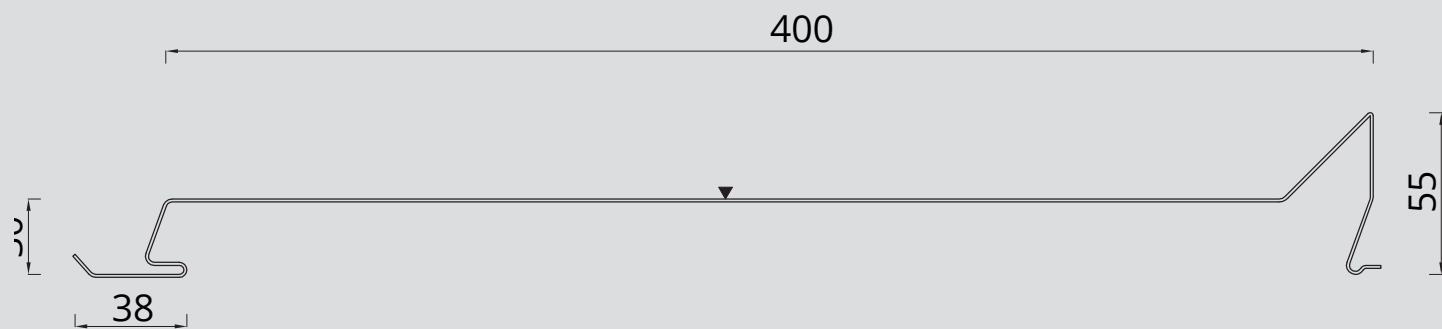
REGISTERED
DESIGNS

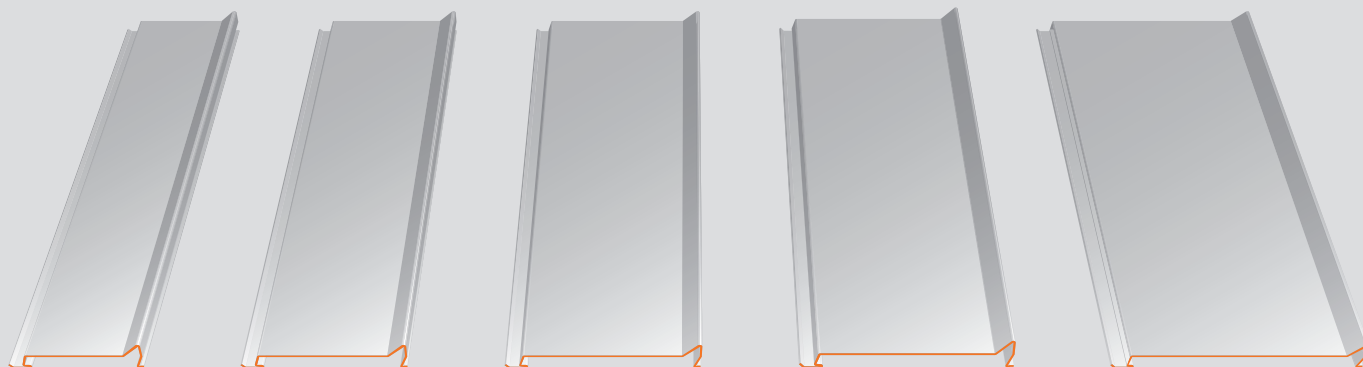
30-YEAR WARRANTY
FIRE : A1
IMPACT : Q4

TRADITIONAL
INSTALLATION
METHOD
CSTB 3747

MADE IN FRANCE

DWG, BIM,
SKETCHUP FILES
TO DOWNLOAD
ON OUR WEBSITE





EPURE CDB 200

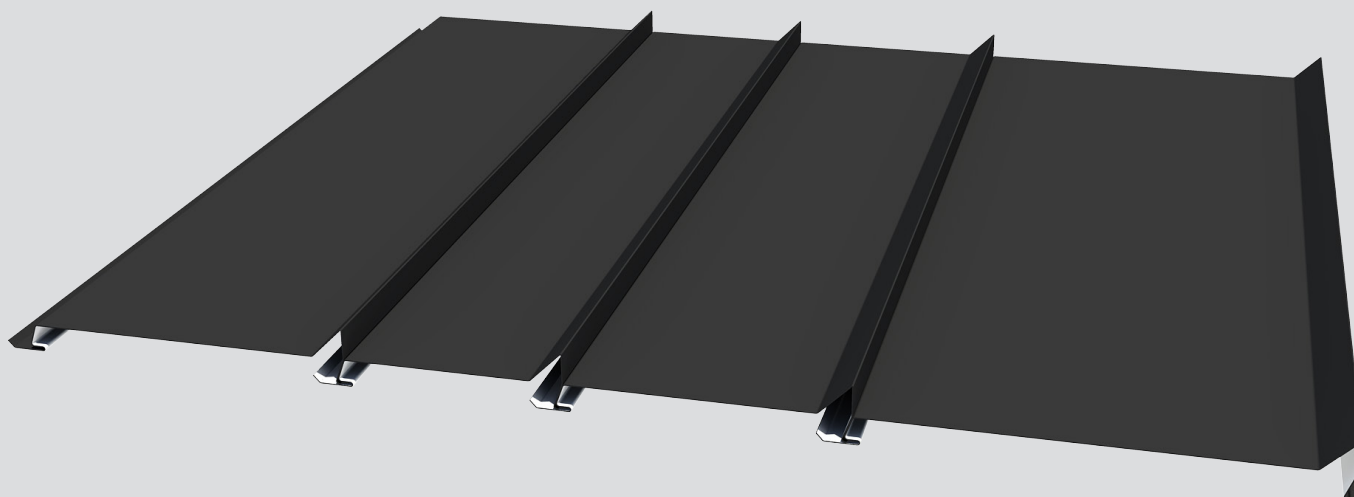
EPURE CDB 250

EPURE CDB 300

EPURE CDB 333

EPURE CDB 400

All sidings are **compatible** and **can be mixed together**



LOAD CAPACITIES

EPURE CDB 200, 250, 300

SPAN TABLES IN DAN/M², ACCORDING TO WIND LOAD

Limit deflection criterion taken into account: 1/200th according to NV65

Nominal thicknesses in mm

PRESSURE		Span (m) en m	SUCTION	
2 supports	3 supports		2 supports	3 supports
876	823	1,00	102	87
775	823	1,10	102	87
688	823	1,20	102	87
612	823	1,30	102	87
547	823	1,40	102	87
491	823	1,50	102	87
459	740	1,60	90	78
423	644	1,70	80	70
367	565	1,80	71	63
320	498	1,90	63	57
281	442	2,00	55	52

TEST REPORT N°
S1013/19/331Test performed
according to norm NF P
34-503 from Nov 1995

The EPURE range metal sidings are non-structural sheets according to standard NF EN 14782:2006, and as per CPT 3747 from CSTB not intended to receive PPE anchoring devices according to EN 795 standard or lifelines.

EPURE CDB 333, 400

SPAN TABLES IN DAN/M², ACCORDING TO WIND LOAD

Limit deflection criterion taken into account: 1/200th according to NV65

Nominal thicknesses in mm

PRESSURE		Span (m) en m	SUCTION	
2 supports	3 supports		2 supports	3 supports
207	187	1,00	126	84
197	187	1,10	118	84
184	187	1,20	109	84
170	187	1,30	99	84
156	187	1,40	91	84
143	187	1,50	83	84
124	181	1,60	73	71
108	173	1,70	57	56
95	164	1,80	45	44
84	155	1,90	34	35
75	147	2,00	26	27

TEST REPORT N°
134287986-001-1Test performed
according to norm NF P
34-503 from Nov 1995

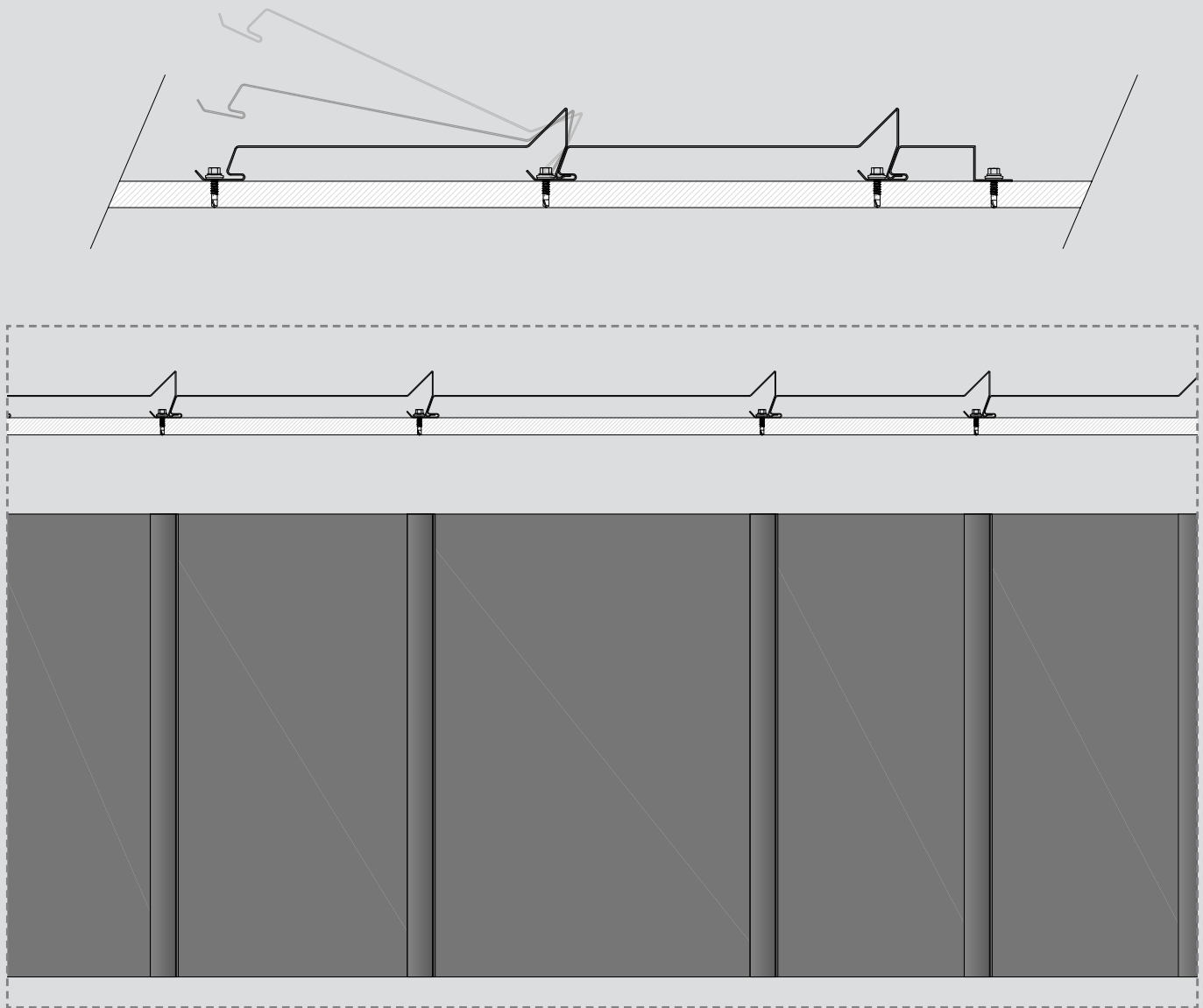
The EPURE range metal sidings are non-structural sheets according to standard NF EN 14782:2006, and as per CPT 3747 from CSTB not intended to receive PPE anchoring devices according to EN 795 standard or lifelines.

Lenght Minimum: 1000mm / Lenght Maximum : 6000 mm



INSTALLATION

SLAT INTERLOCKING SYSTEM / HIDDEN FIXING



EPURE sidings are concealed fastening products.

The sidings are screwed to the framework. Each siding covers the fastening of the previous one.

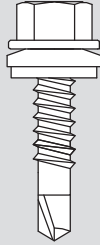
In this way, the sidings fit together one after the other.

Once the façade is complete, the sidings give the effect of a standing seam, while offering a simplified installation system that requires no special folding equipment. Self-supporting, they can be fixed to all types of framework.

Be careful **not to lean on the sidings when installing them**, to avoid distortion.

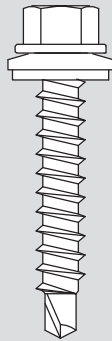
FIXING THE SIDINGS

FIXING ON METAL FRAME

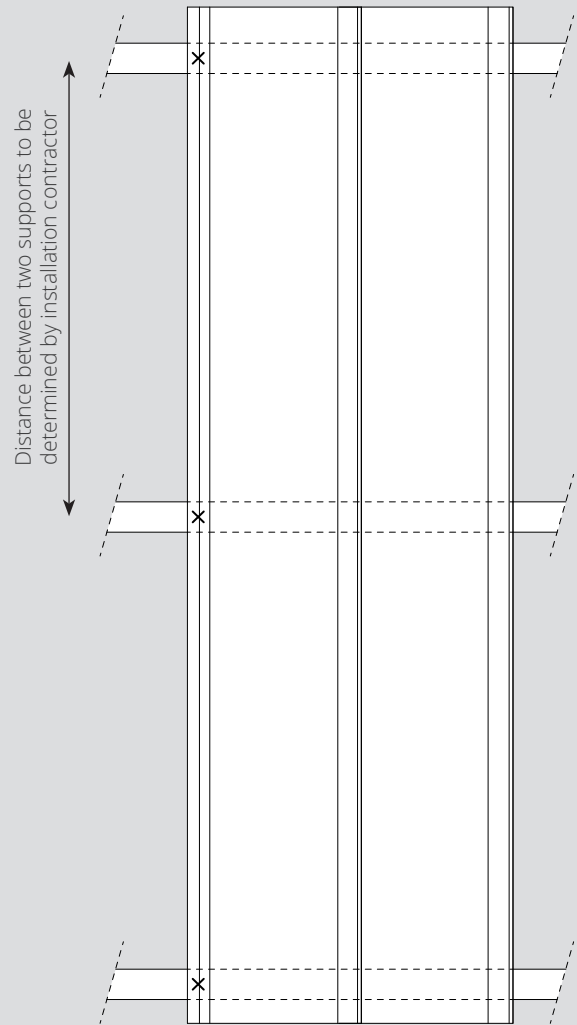


5,5x22mm mini

FIXING ON TIMBER FRAME



6.3x35mm mini



Screws position

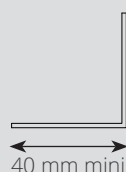
The screws used for EPURE sidings are standard: self-drilling stainless steel screws with collars, sized according to the type of secondary framework chosen.

A screw must be placed at each frame-siding intersection.

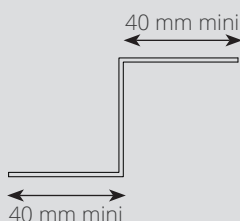
EPURE sidings can be installed on metal or wood secondary frameworks and on all types of buildings: concrete or masonry load-bearing structure, metal framework with double-skin cladding or load-bearing structure consisting of a timber-framed wall, in accordance with CSTB Cahier 3747-V2 of March 2024 (see installation details below).

SECONDARY FRAMING

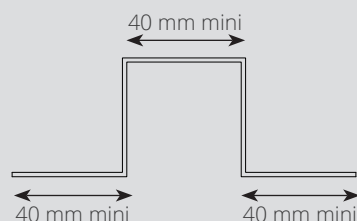
Metal framing «L»



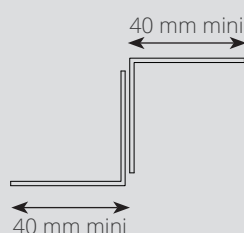
Metal framing «Z»



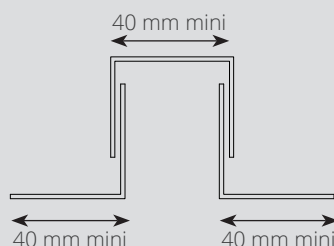
Metal framing «Ω»



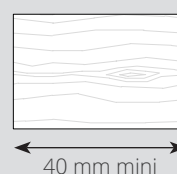
Ajustable metal framing
«Z»



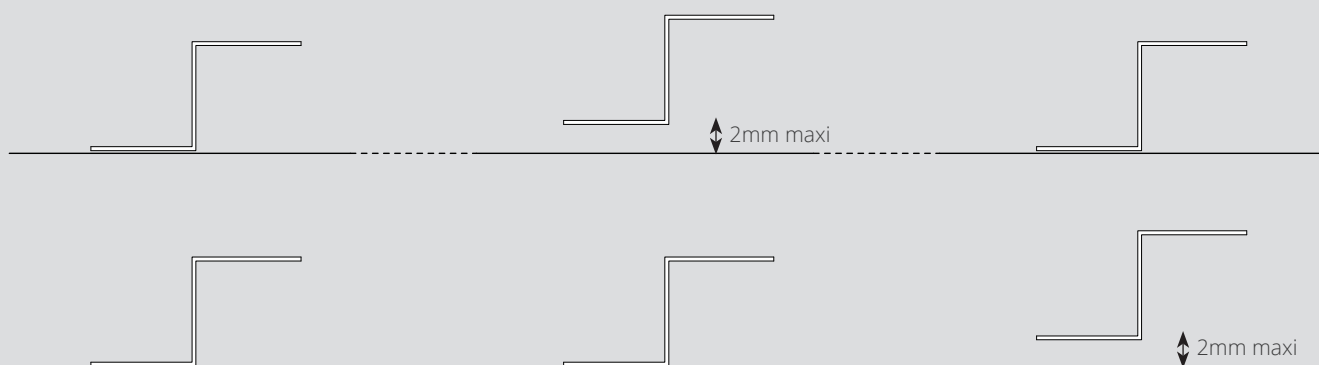
Ajustable metal framing
«Ω»



Timber frame



FLATNESS OF SUPPORT

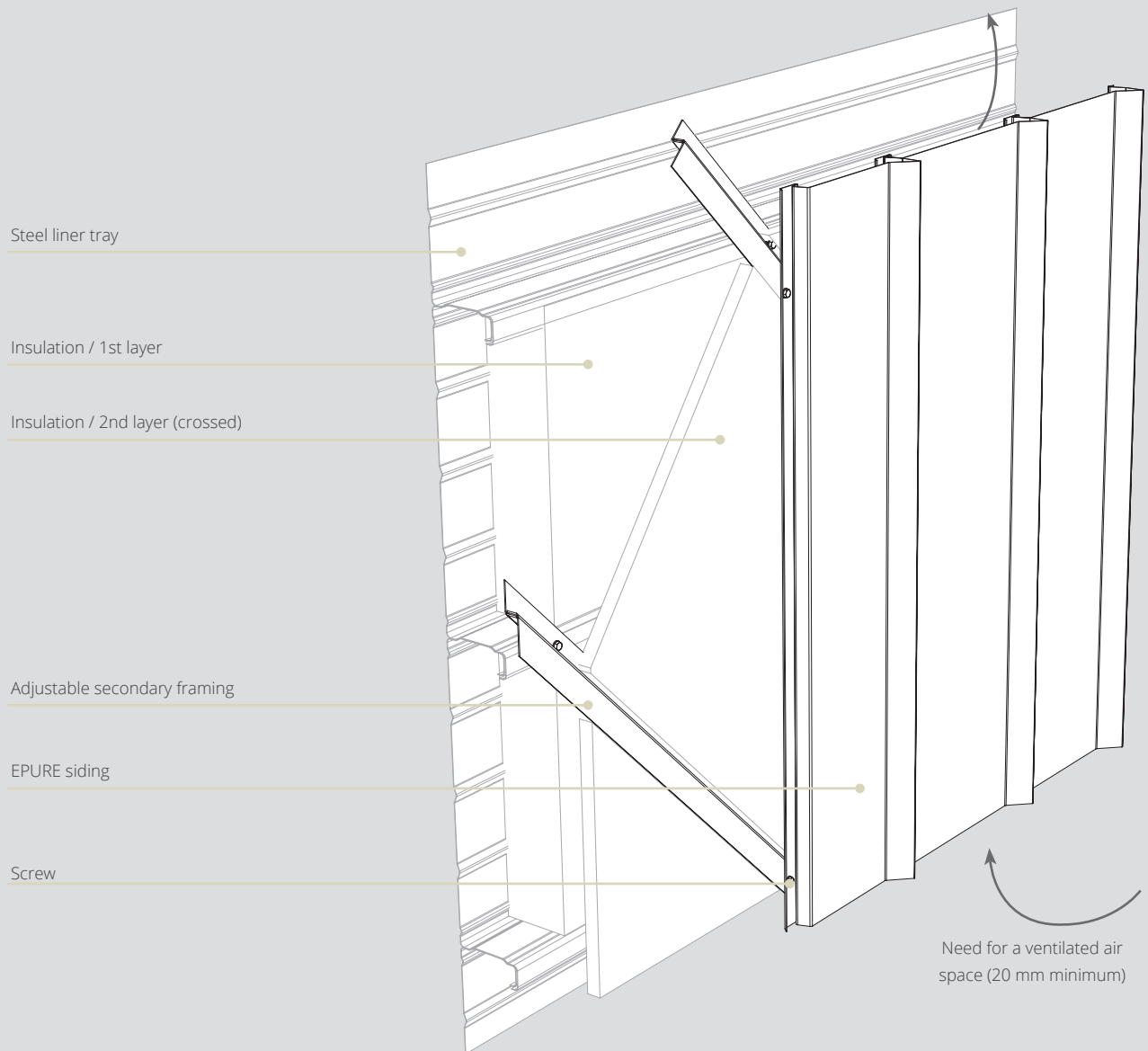


The secondary framing elements must be sized by the installation company. Metal framing should be at least 1.5mm thick.

The flatness of the support is essential when installing the panels.

Regardless of the type of secondary framework chosen (metal or wood), it must comply with **a maximum permissible co-planarity of 2mm over three supports.**

DOUBLE-SKIN INSTALLATION / VERTICAL APPLICATION

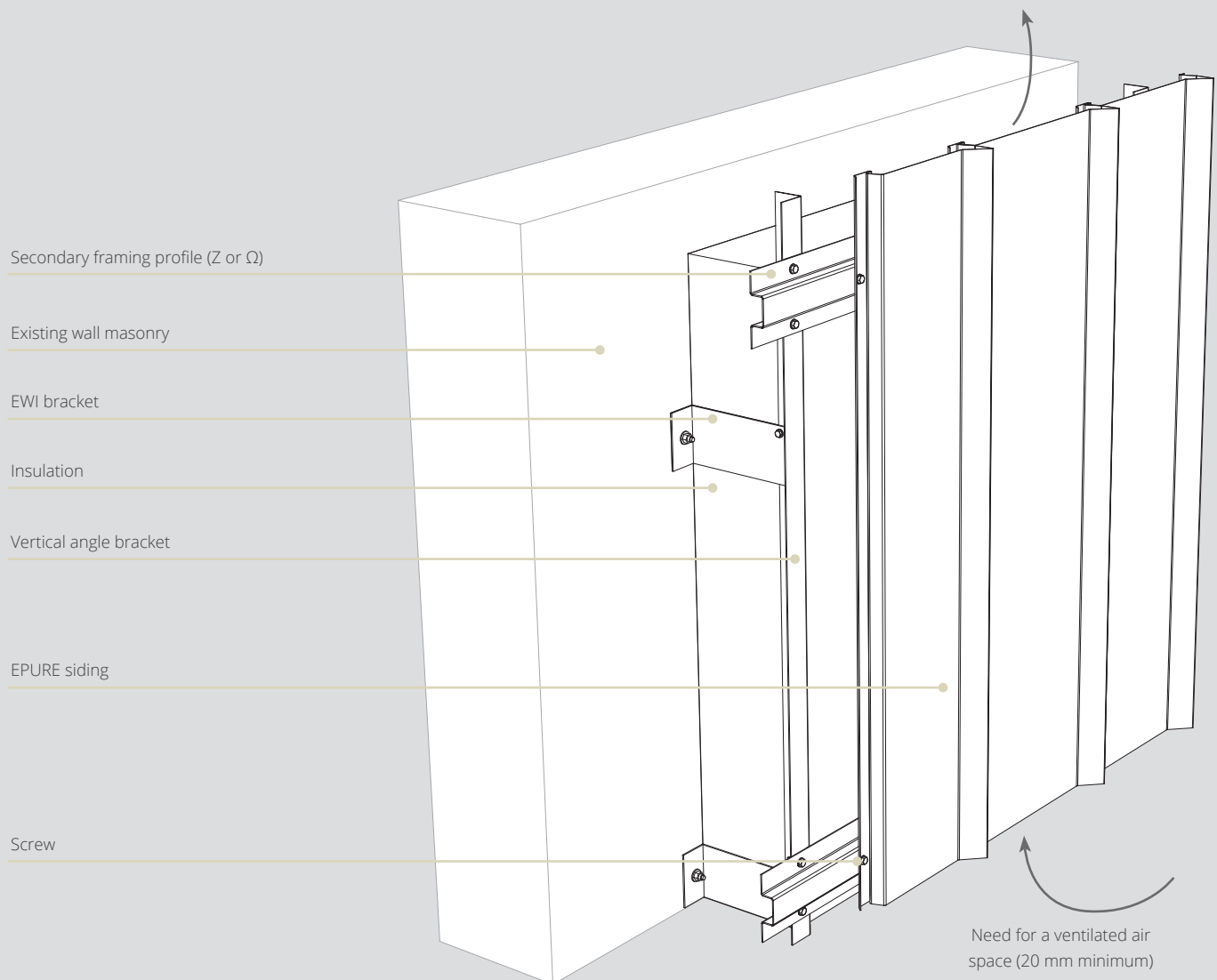


BUILDINGS WITH METAL FRAMING

The flatness of the support is very important the insulation must be positioned between the secondary framing elements and **the insulation must not be pinched** between the framing elements and the EPURE sidings. An adjustable secondary framework will ensure that the substrate is perfectly flat.

When installing the first siding, you must be careful to ensure that it is vertical, as this will determine the rest of the façade.

EXTERNAL WALL INSULATION (EWI) ON MASONRY WALLS WITH METAL FRAMING



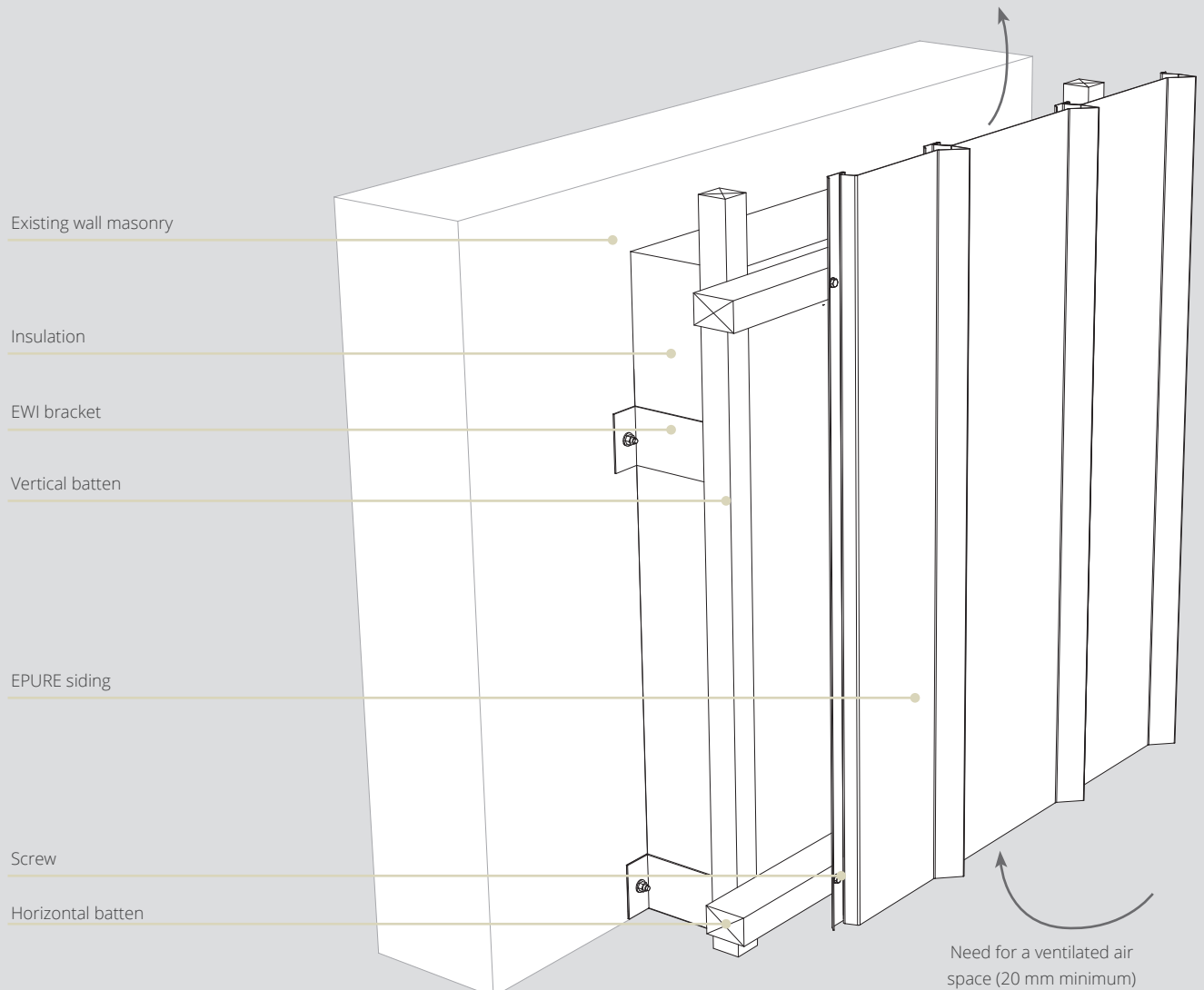
MASONRY WALLS

The flatness of the support is very important. The adjustable square brackets ensure that the frames are perfectly flat.

When installing the first siding, care should be taken to ensure that it is vertical, as this will determine the rest of the façade.

The framework and its installation comply with Cahier CSTB 3194.

EXTERNAL WALL INSULATION (EWI) ON MASONRY WALLS WITH TIMBER FRAMING



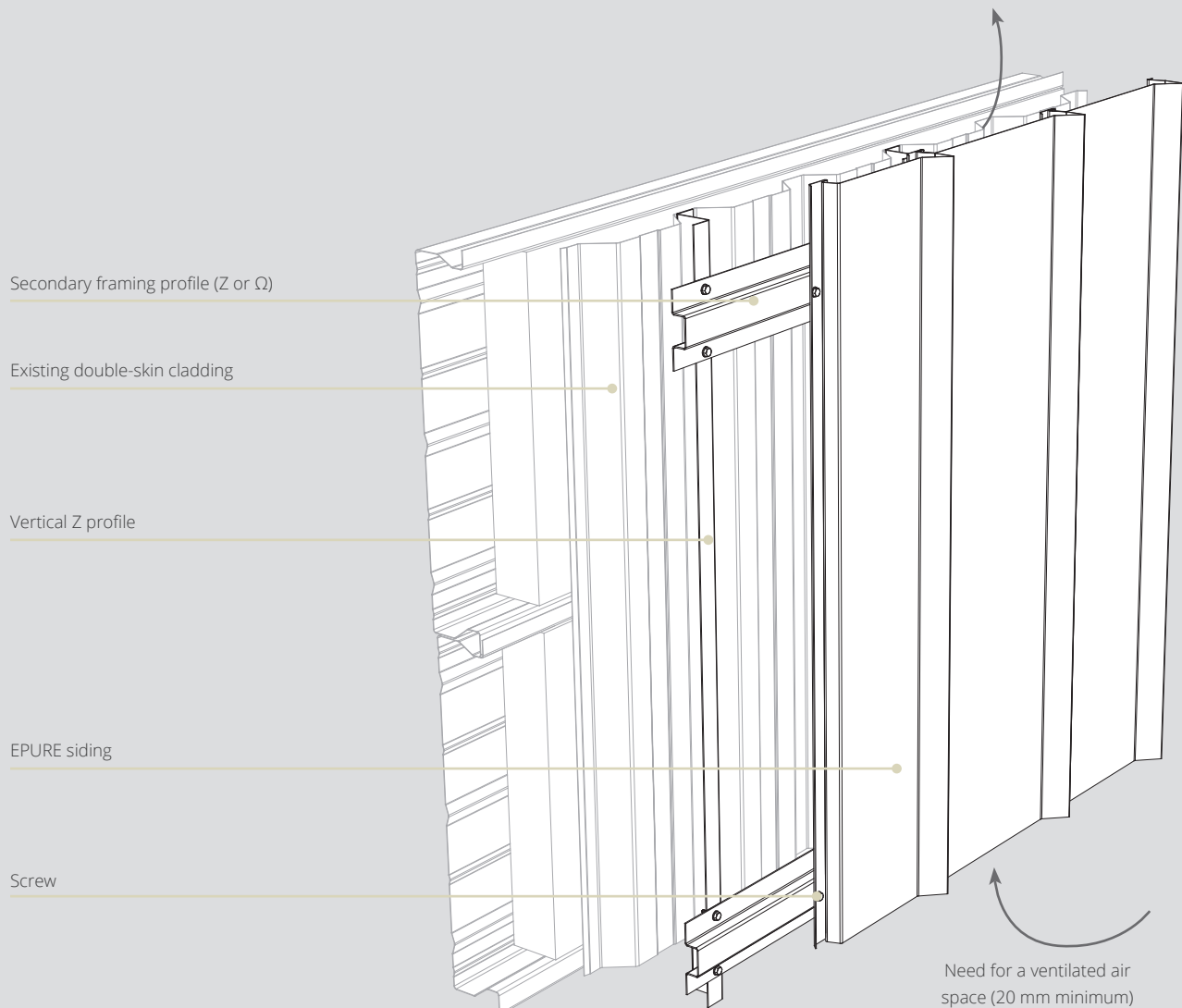
MASONRY WALLS

The flatness of the support is very important. The adjustable square brackets ensure that the frames are perfectly flat.

When installing the first siding, care should be taken to ensure that it is vertical, as this will determine the rest of the façade.

In the case of timber framing, a ventilated air space must be provided. The framework and its installation comply with Cahier CSTB 3316.

INSTALLATION ON EXISTING DOUBLE-SKIN CLADDING



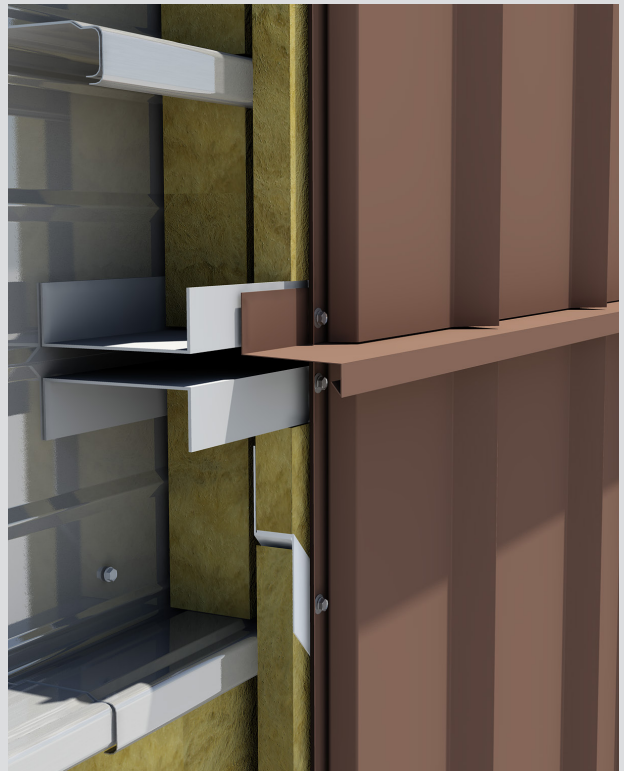
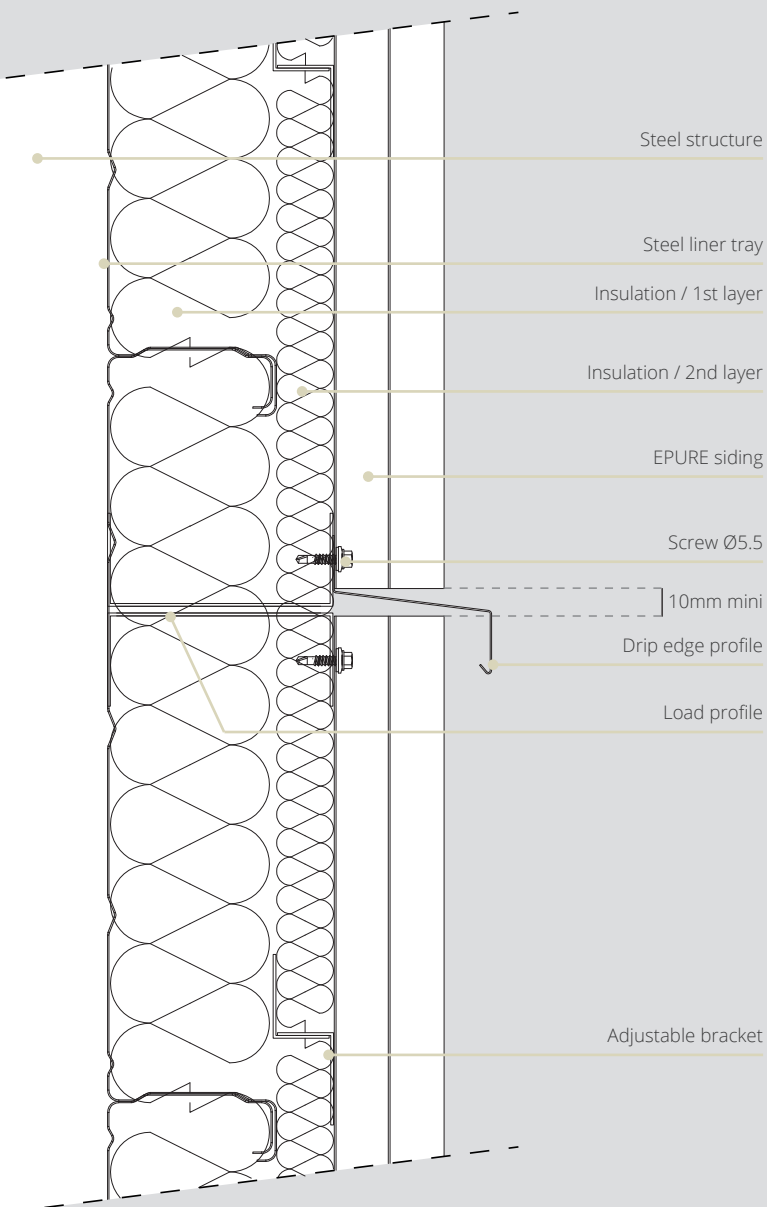
RENOVATING A BUILDING WITHOUT REMOVING THE EXISTING CLADDING

The flatness of the support is very important, it may be necessary to ensure that the frames are perfectly flat.

When installing the first siding, care should be taken to ensure that it is vertical, as this will determine the rest of the façade.



HORIZONTAL EXPANSION JOINT



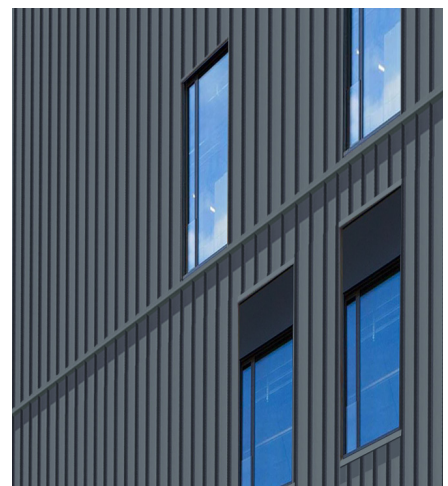
Dimensions EPURE sidings :

- Minimum length : 1000 mm
- Maximum length : 6000 mm

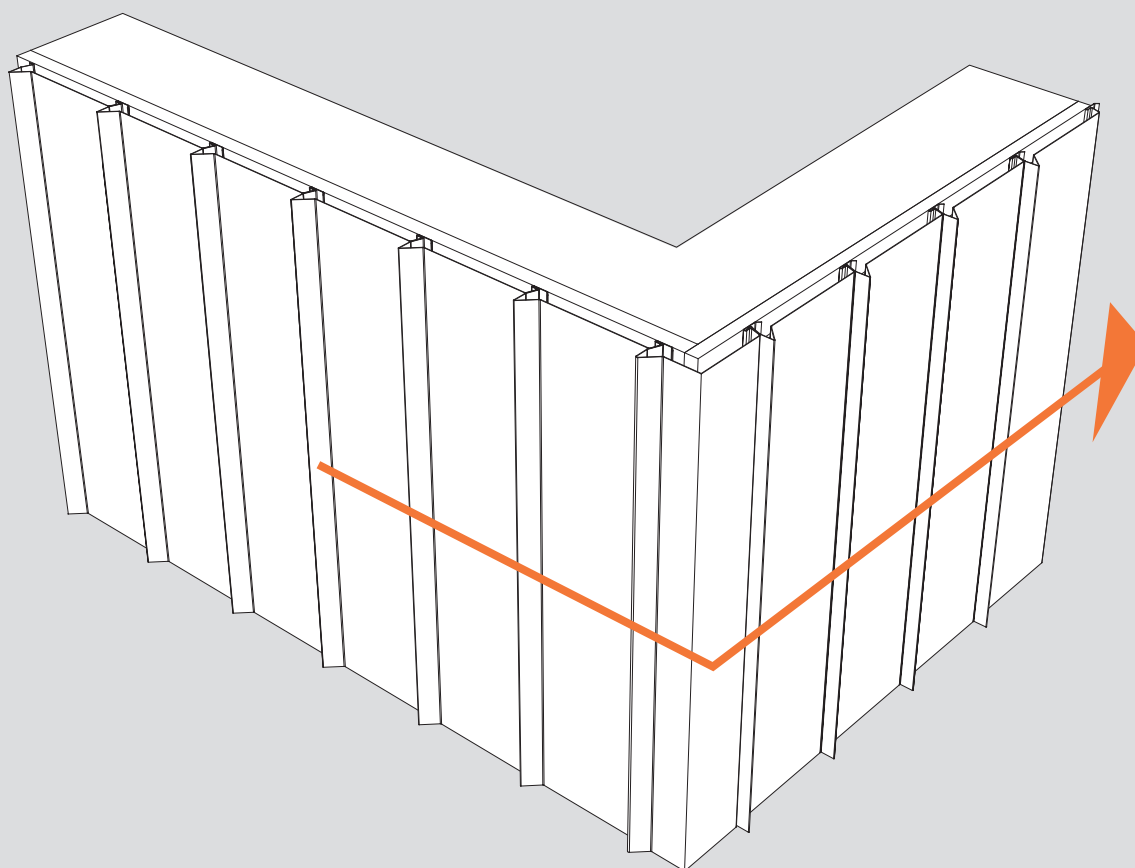
In the case of high facades, several sidings will be needed to cover the facade.

To ensure a watertight seal, it is advisable to use a drip-edge profile between each level.

Tip: This drip-edge profile can be used to play on the grids, by staggering the sidings from one level to the next.

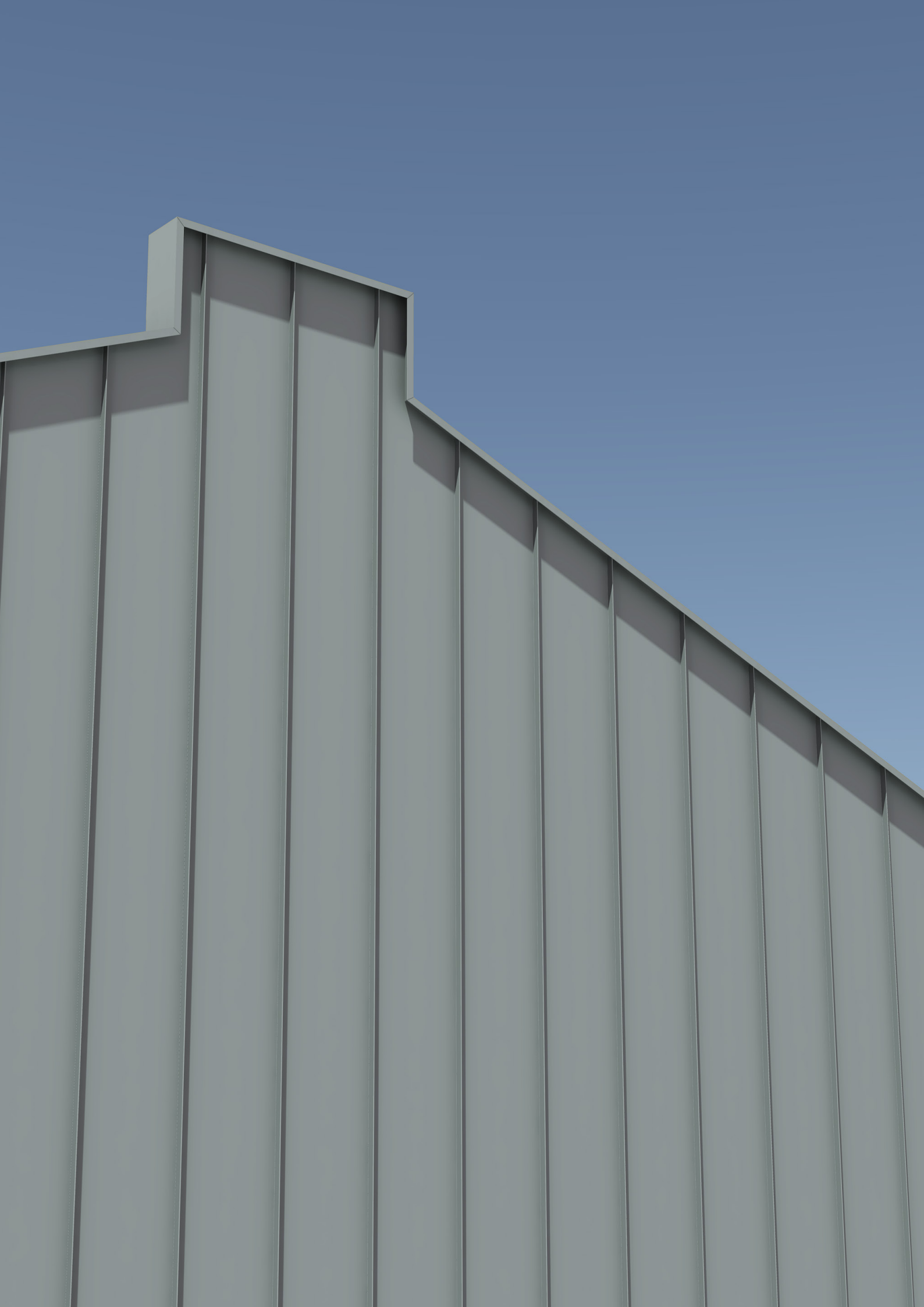


INSTALLATION DIRECTION



Whenever this does not conflict with prevailing wind calculations, it is strongly recommended that the sidings are installed with the same standing seam orientation from one façade to the next.

The regularity of the shadows cast will add aesthetic appeal to the project.



FINISHING PROFILES



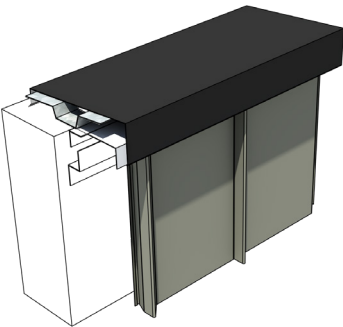
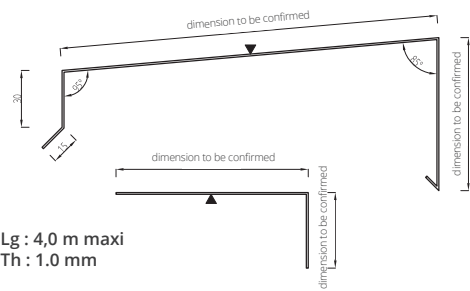
Beyond the aesthetic quality of its sidings, a successful metal facade requires precise and well-designed finishing profiles. ATELIERS 3S takes particular care to offer discreet elements that connect with the styles of the associated cladding.

In these pages, you'll find a selection of models that are fully adaptable to the actual dimensions of your project.

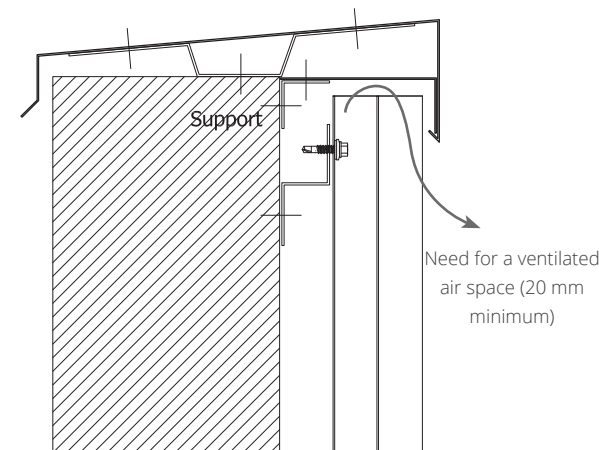
No matter how precise your installation is, **finishing profiles will always be custom-made elements.** Please don't hesitate to provide us with your exact dimensions and any other installation drawings.

FINISHING PROFILES

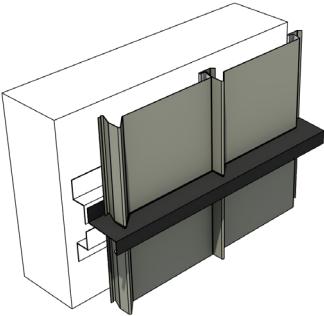
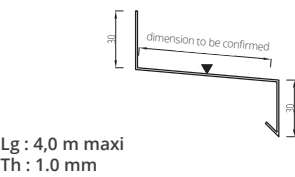
FACADE TOP



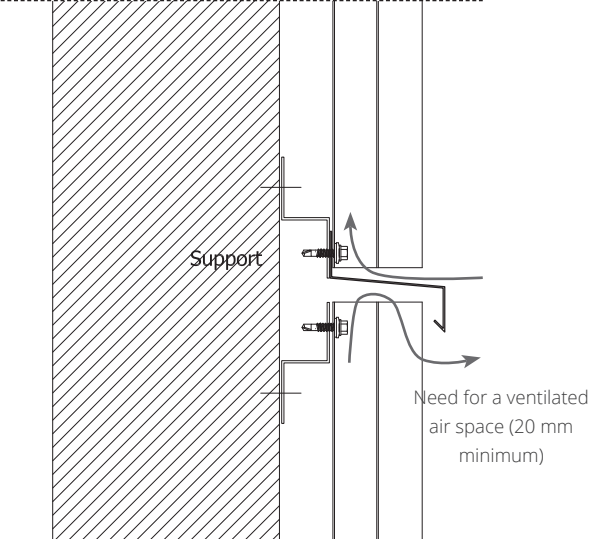
VERTICAL APPLICATION - COPING



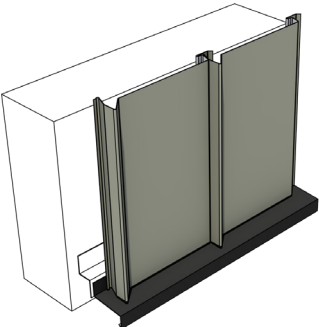
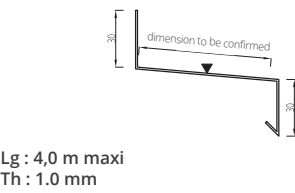
JUNCTION VERTICALE



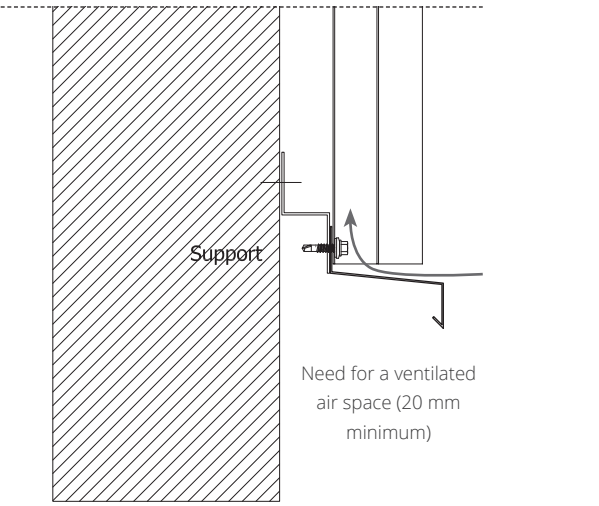
VERTICAL APPLICATION - DRIP EDGE



FACADE BOTTOM

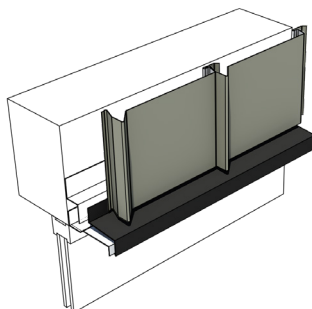


VERTICAL APPLICATION - DRIP EDGE



OPENING

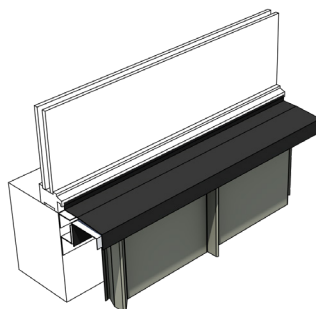
Technical drawing of a mechanical part. The top view shows a horizontal base with a vertical section on the right. A dimension line indicates a length of 30. A label 'Cote adaptable' points to the horizontal base. The side view shows a vertical section with a horizontal base. A dimension line indicates a height of 30. A label 'dimension to be confirmed' points to the horizontal base.



Support

Need for a ventilated air space (20 mm minimum)

OPENING



Need for a ventilated air space (20 mm minimum)

Support

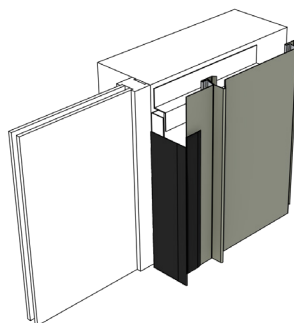
OPENING

Technical drawing of a 90-degree elbow. The drawing shows a side view with a horizontal leg of length 30 and a vertical leg of height 27. Below the drawing, the dimensions are specified as:

- Lg : 4,0 m maxi
- Th : 1,5 mm mini

Below the main drawing, two detailed views of the elbow bend are shown, each with the following dimensions and angles:

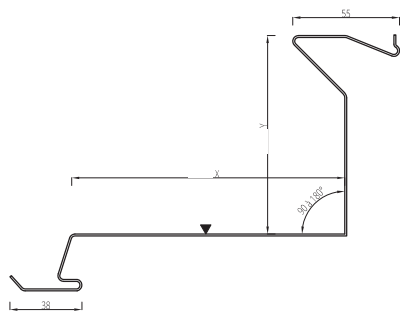
- Top view: dimension to be confirmed, 10, 125°, 40, 45°, dimension to be confirmed.
- Bottom view: dimension to be confirmed, 10, 125°, 40, 45°, dimension to be confirmed.



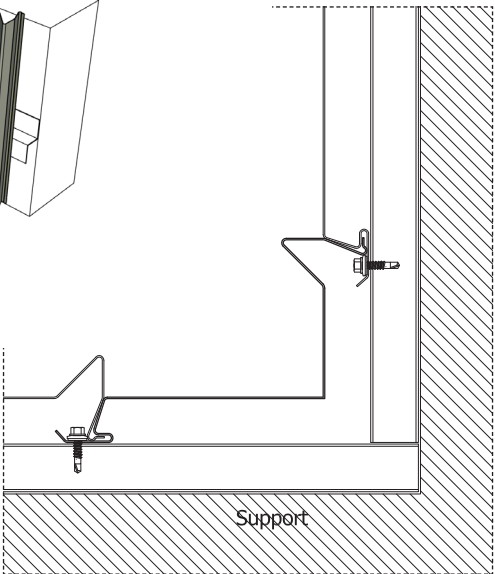
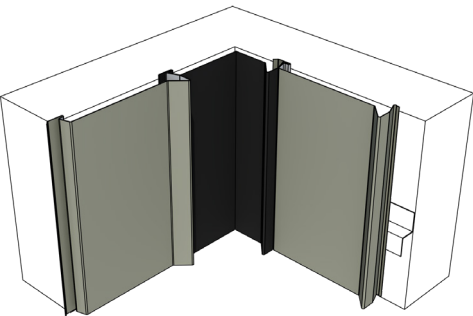
Technical drawing of a roof cross-section. A drainage channel is shown with a support structure labeled "Support". The support is a rectangular block with diagonal hatching. The channel is mounted on top of the support. A vertical dashed line on the left indicates a section cut. A horizontal dashed line on the right indicates a section cut. The channel has a sloped bottom and a vertical side wall. A small rectangular component is visible on the right side of the channel.

INSIDE CORNER

VERTICAL APPLICATION - FOLDED SIDING

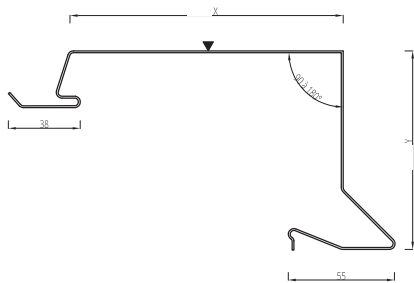


Lg : 4,0 m maxi et 1.1 m mini
IMPORTANT : $X+Y=200$ or 250 or 300 or 400mm
 $X \geq 115\text{mm}$
 $Y \geq 60\text{mm}$

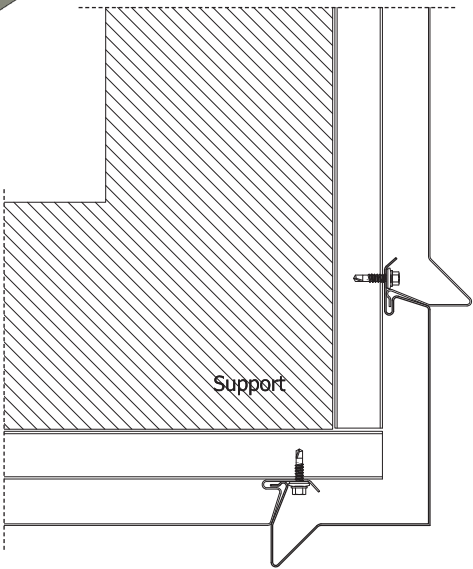
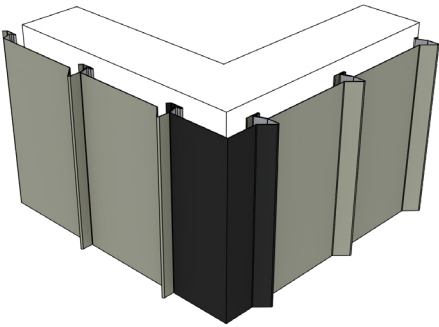


OUTSIDE CORNER

VERTICAL APPLICATION - FOLDED SIDING

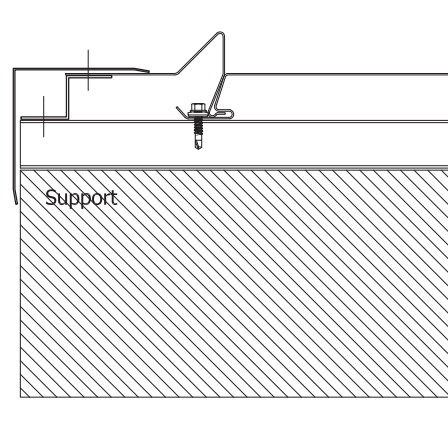
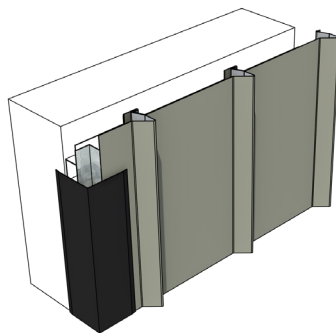
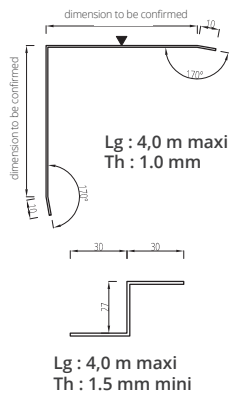


Lg : 4,0 m maxi et 1.1 Mini
Th : 1.0 mm
IMPORTANT : $X+Y=200$ or 250 or 300 or 400mm
 $X \geq 115\text{mm}$
 $Y \geq 60\text{mm}$



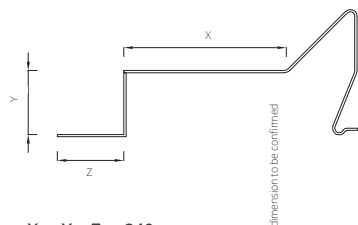
JUNCTION ON EXISTING WALL

VERTICAL APPLICATION - COVER



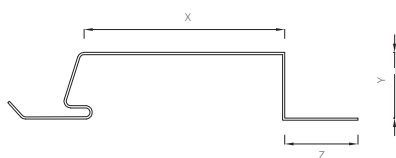
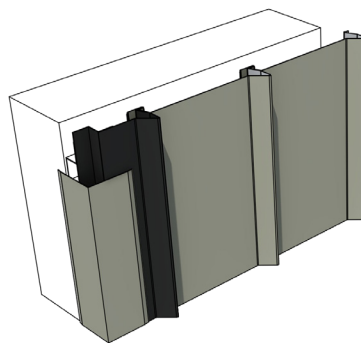
STARTING AND ENDING PROFILE

VERTICAL APPLICATION - FOLDED SHEET



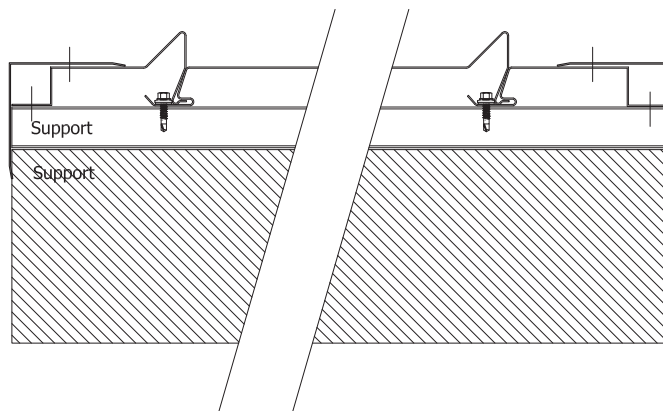
X : mini 30
Y : siding height or adjustable
Z : mini 30

Lenght : mini 1000 / maxi 6000
Th : 1 mm



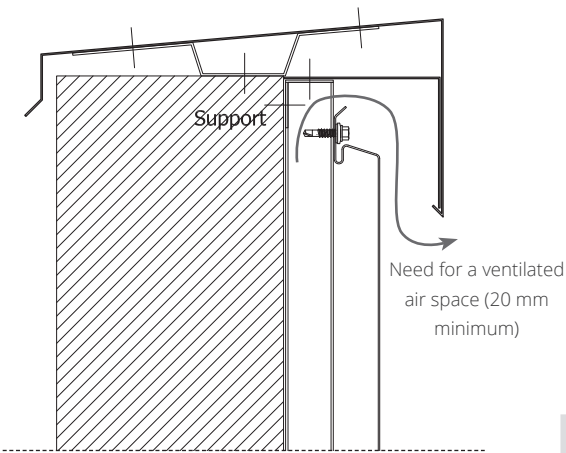
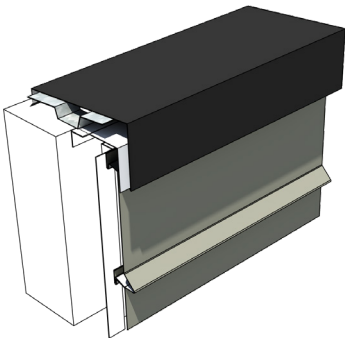
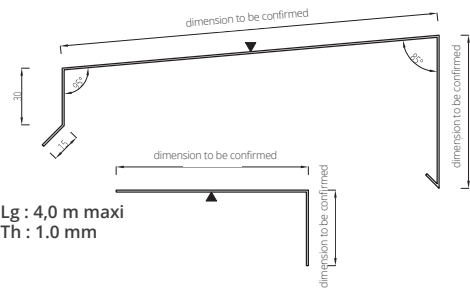
X : mini 30
Y : siding height or adjustable
Z : mini 30

Lenght : mini 1000 / maxi 6000
Th : 1 mm



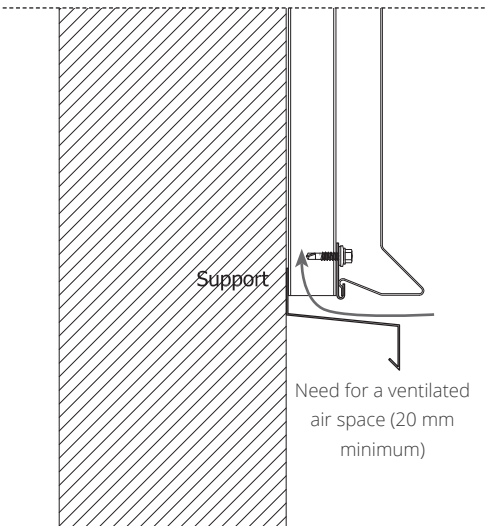
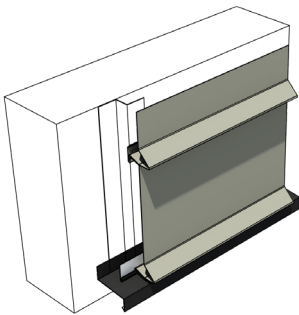
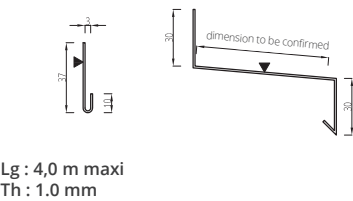
FACADE TOP

HORIZONTAL APPLICATION - COPING



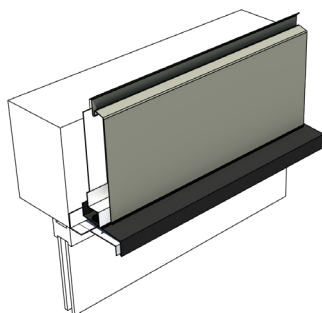
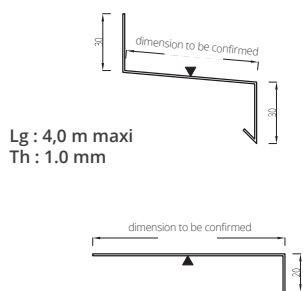
FACADE BOTTOM

HORIZONTAL APPLICATION - DRIP EDGE

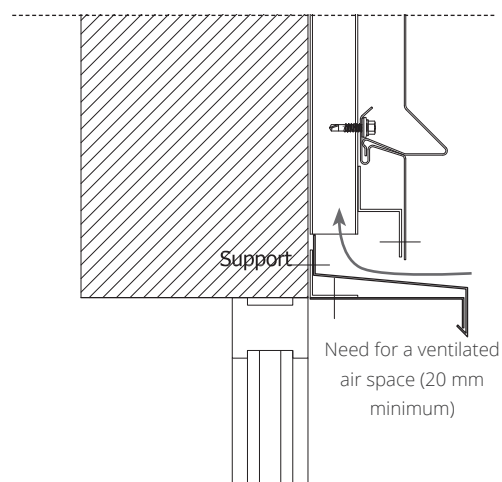


FINISHING PROFILES

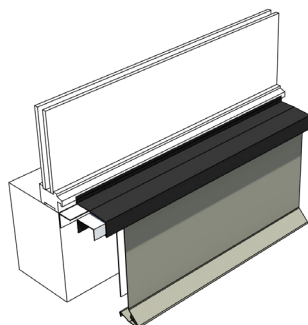
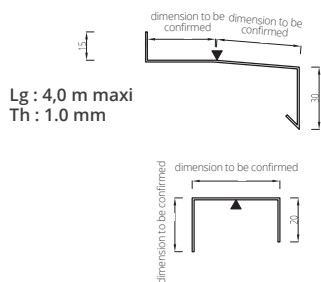
OPENING



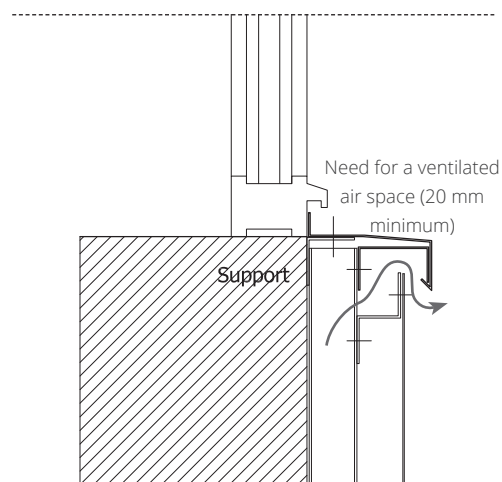
HORIZONTAL APPLICATION - LINTEL



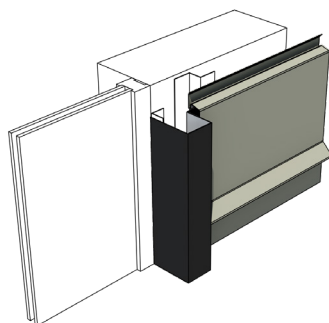
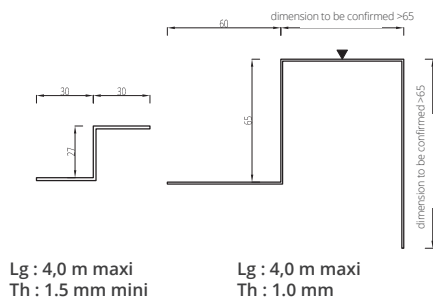
OPENING



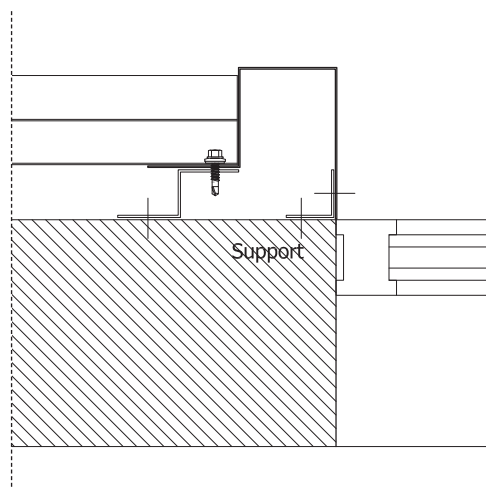
HORIZONTAL APPLICATION - SILL



OPENING



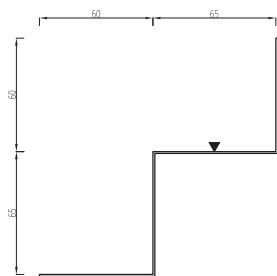
HORIZONTAL APPLICATION - JAMB



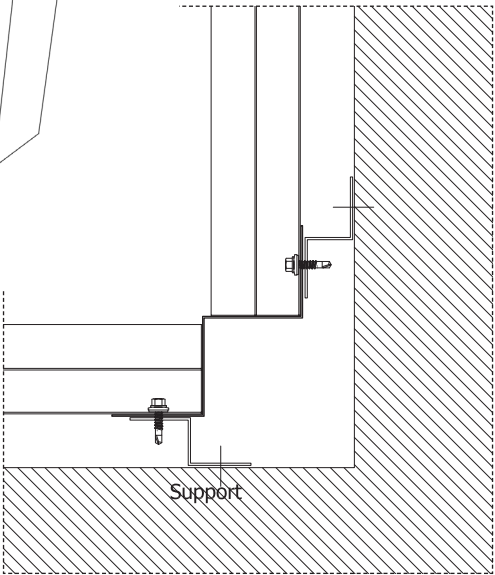
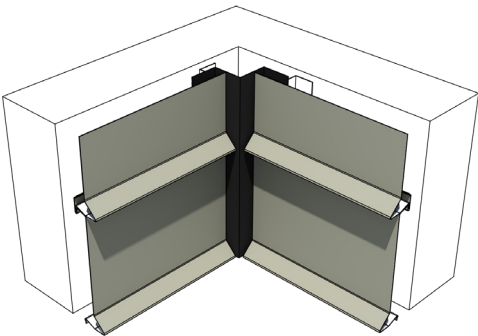
FINISHING PROFILES

INSIDE CORNER

HORIZONTAL APPLICATION - INSIDE CORNER



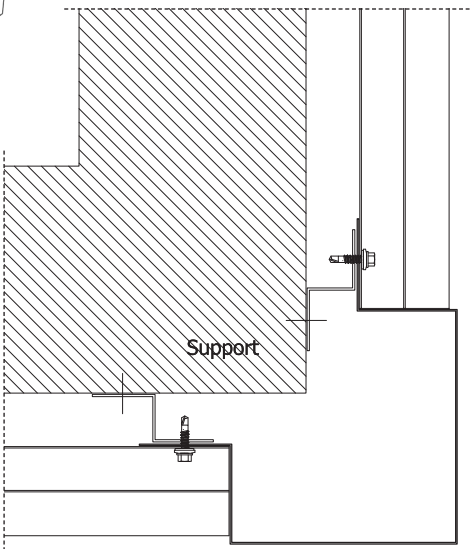
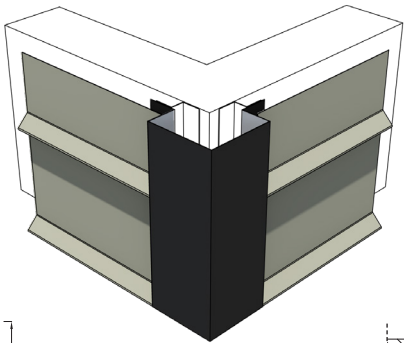
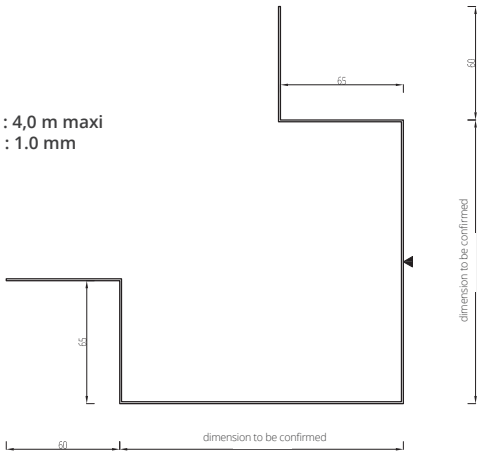
Lg : 4,0 m maxi
Th : 1.0 mm



OUTSIDE CORNER

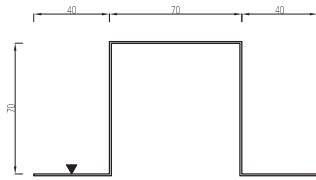
HORIZONTAL APPLICATION - OUTSIDE CORNER

Lg : 4,0 m maxi
Th : 1.0 mm

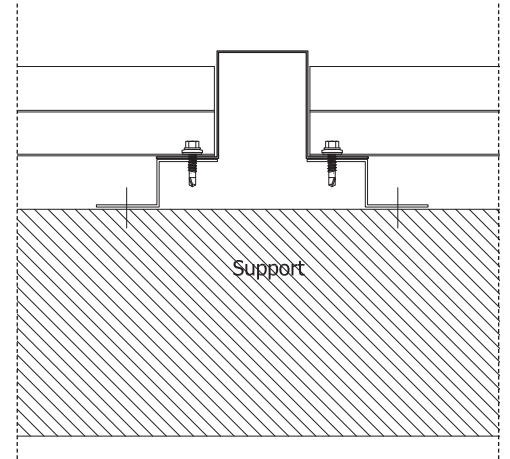
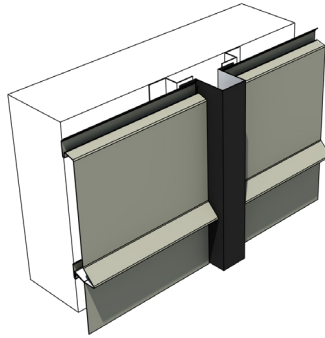


HORIZONTAL JUNCTION

HORIZONTAL APPLICATION - PIN JOINT



Lg : 4,0 m maxi
Th : 1.0 mm





PROJECTS GALLERY

Your source of inspiration

An exclusive search experience,
available only on the **ATELIERS**  app.

Discover our projects from a new perspective



BY
PROJECTS

BY
PRODUCTS

BY
COLORS

BY
LOCATION

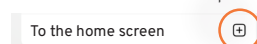


Tip to add the app directly
to your home screen
without going through the
Store:

1- At the bottom of your page click here:



2- Scroll and choose the option:







COLOR CHART

Colours and materials **used**

ORIGINAL

Exclusive, ultra resistant colours that meet the requirements of the 3S® range.

METALLIC



METAL 0207 35µm



PEARL 0208 35µm



PLATINUM 0206 35µm

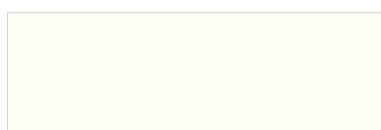


INTENSE GOLD 6995 35µm



COPPER 0603 35µm

SATIN



COTTON 0201 35µm



RAL 5008 - OCEAN 25µm



DUVET 0202 35µm



RAL 7032 - SILEC GREY 35µm



POWDER 0203 35µm



RAL 7022 - EGGSHELL 35µm



RAL 7037 35µm



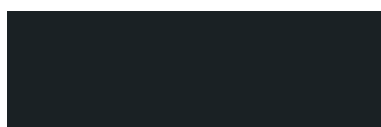
POP 0204 35µm



RAL 7016 - ANTHRACITE GREY 35µm



SPRING 0205 35µm



RAL 7021 - BLACK GREY 25µm



RAL 9005 - DEEP BLACK 35µm



Please contact us for further information on our RAL colour chart and our special custom-designed textured coatings.

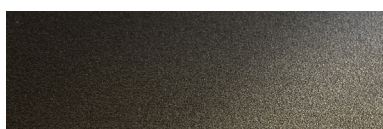
Colours and materials **used**

MATERIALS

Coatings that are as fabulous as the materials.



OXYDE 0602 35µm



DARK BRONZE 0604 50µm



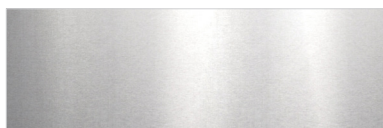
INTENSE GOLD 6995 35µm



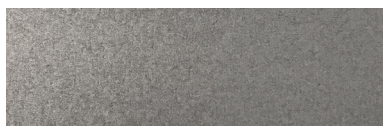
COPPER 0603 35µm

ROUGH

Reveal the nobility of raw materials.



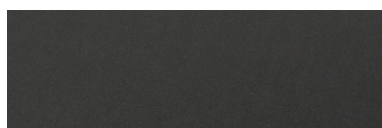
STAINLESS STEEL 0302
Shiny



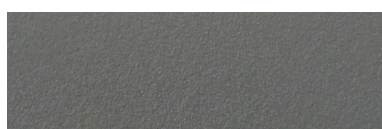
SURFACE GRAIN 0301
Galvanized steel with high-precision grain

ZINC SPIRIT

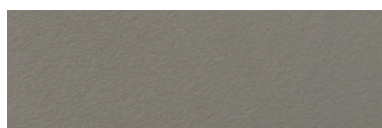
Deep matte and very fine texture for a true-to-life zinc effect.



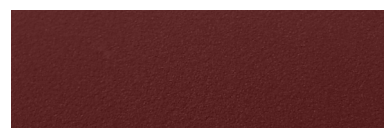
NERRO 0104 50µm



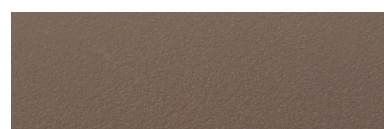
GALEO 0103 50µm



AZURO 0102 50µm



VINO 0106 50µm



VOLCANO 0101 50µm



BIANCO 0105 50µm

ONWOOD

True-to-life matte wood texture. Available in all wood finish or with optional black strips "Colorigami® Process".



SILVER TECK (BLACK BANDS) 0409 47µm



SILVER TECK (ALL WOOD) 0408 47µm



NATURAL OAK (BLACK BANDS) 0406 47µm
0416 (MINI)
0426 (MAXI)



NATURAL OAK (ALL WOOD) 0403 47µm



HAZELNUT OAK (BLACK BANDS) 0405 47µm



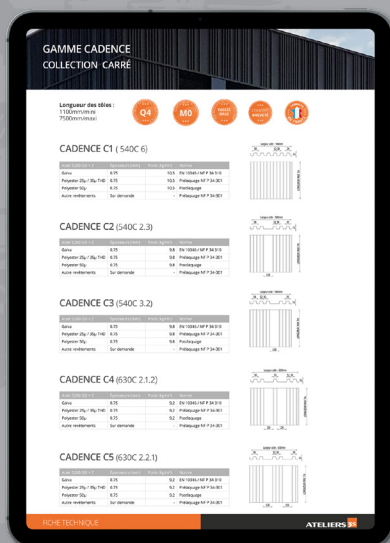
HAZELNUT OAK (ALL WOOD) 0402 47µm



COFFEE OAK (BLACK BANDS) 0407 47µm



COFFEE OAK (ALL WOOD) 0404 47µm



- TECHNICAL DATASHEETS
- INSTALLATION INSTRUCTIONS
- GUIDES TO FINISHING FOLDS
- CCTP (SPECIAL TECHNICAL SPECIFICATIONS)
- FILES DWG, BIM, SKETCHUP
- ETC.

Find us at:
www.ateliers3s.com



VISIT OUR SHOWROOM

100 AVENUE DAUMESNIL 75012 PARIS - FRANCE

GRUPE



FIMAVI

E P U R E

ATELIERS 
metal cladding creators

Rue verte, ZI Ladoux - F-63118 Cébazat - France
T. +33(0)4 73 88 59 50
contact@ateliers3s.com - www.ateliers3s.com

02/02/2026