



NEW YORK

FACADES REACH FOR THE SKY

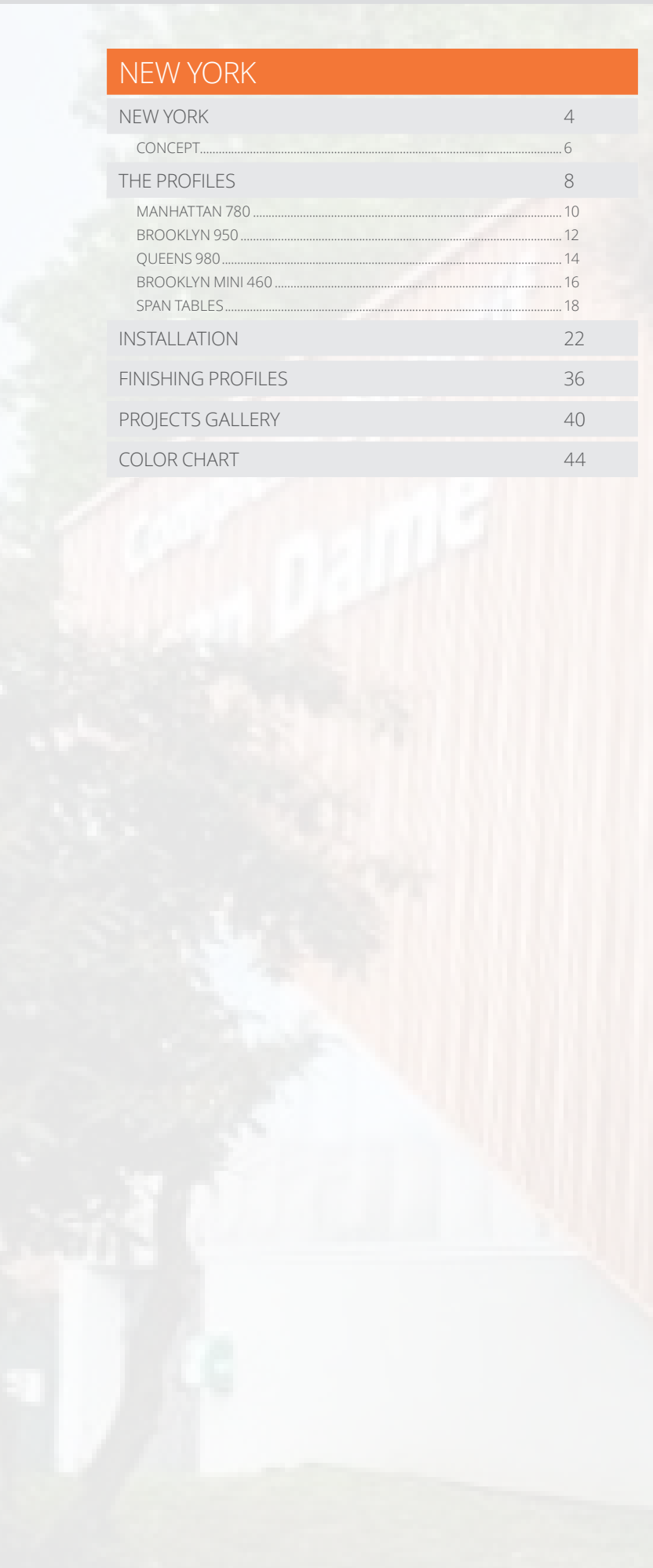


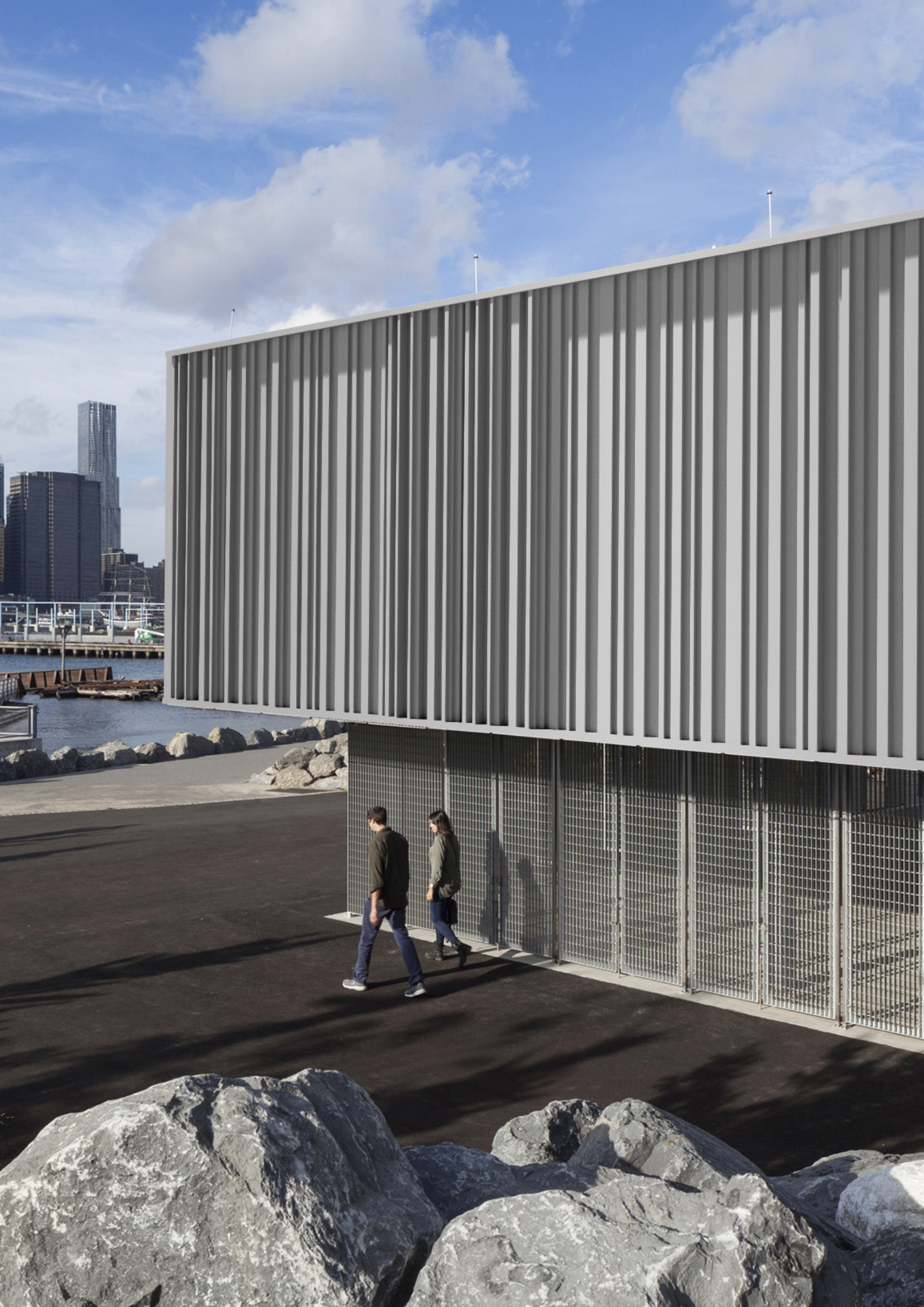
Complexe Sportif
en Dame

SUMMARY

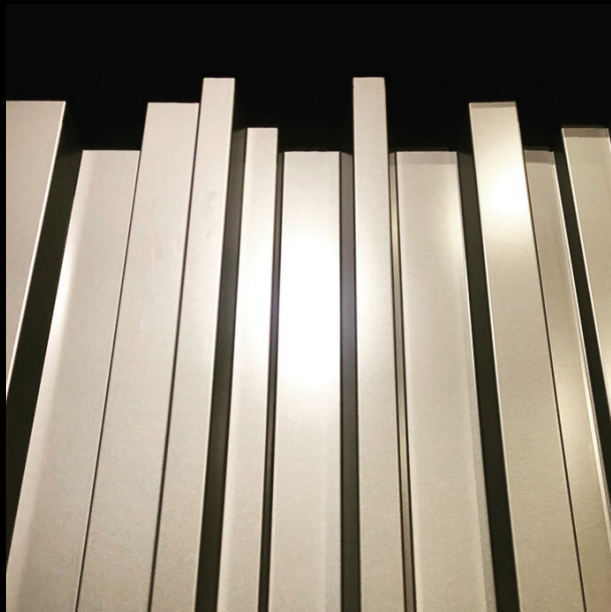
NEW YORK

NEW YORK	4
CONCEPT.....	6
THE PROFILES	8
MANHATTAN 780	10
BROOKLYN 950	12
QUEENS 980.....	14
BROOKLYN MINI 460	16
SPAN TABLES.....	18
INSTALLATION	22
FINISHING PROFILES	36
PROJECTS GALLERY	40
COLOR CHART	44





NEW YORK



NEW YORK RANGE

NEW YORK

Facades reach for the sky

Conquering the 3rd dimension!

Like the famous skyline, for the first time, the NEW YORK range plays with rib depth, letting the shadows do the work. The profiles of these visually impressive designs offer three unique signatures and, above all, provide an endless number of combinations.

MANHATTAN



BROOKLYN



QUEENS



3 Profiles = 3 QUARTERS



Always very easy to install

Designed according to traditional steel cladding installation rules, NEW YORK panels are as easy to install as a classical profile. New or renovation, they adapt naturally to all types of systems and projects.



THE PROFILES

MANHATTAN 780



PROFILE MANHATTAN 780

Material	Thickness (mm)	Weight (kg/m ²)
Steel S280 GD + Z275	0.75	9.40

Coating	Norm
Hot dip Galvanized	NF EN 10346
Polyester 35μ THD	Coil coating EN 10169
Polyurethane 50μ	Coil coating EN 10169
Post-coating 60μ	
Other coating	Upon request

Profile height : 60 mm

Sheets length : 8000mm maximum

REGISTERED
DESIGNS

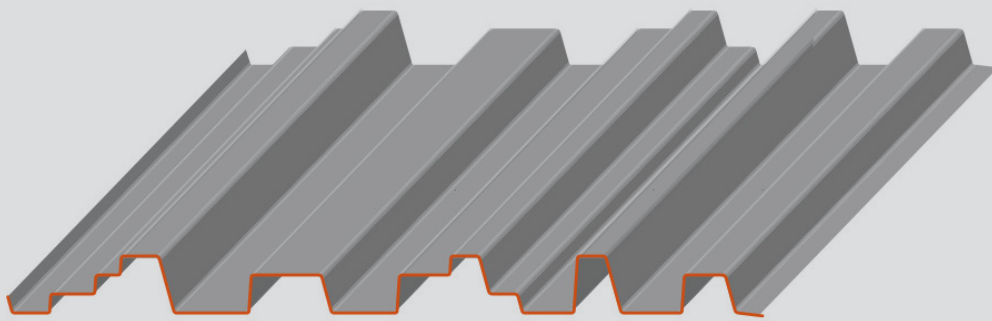
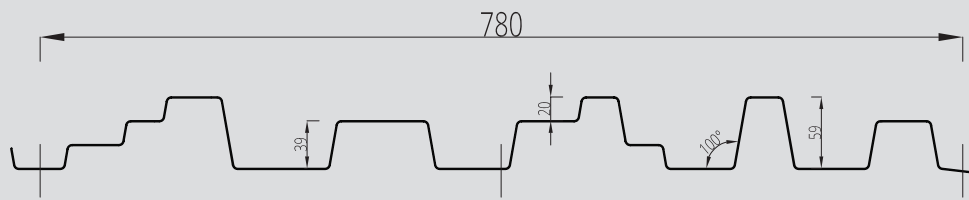
30-YEAR WARRANTY
FIRE : A1
IMPACT : Q4

TRADITIONAL
INSTALLATION
METHOD

MADE IN FRANCE

DWG, BIM,
SKETCHUP FILES
TO DOWNLOAD
ON OUR WEBSITE

MANHATTAN 780



BROOKLYN 950



PROFILE BROOKLYN 950

Material	Thickness (mm)	Weight (kg/m ²)
Steel S280 GD + Z275	0.75	7.71

Coating	Norm
Hot dip Galvanized	NF EN 10346
Polyester 35μ THD	Coil coating EN 10169
Polyurethane 50μ	Coil coating EN 10169
Post-coating 60μ	
Other coating	Upon request

Profile height : 40 mm

Sheets length : 8000mm maximum

REGISTERED
DESIGNS

30-YEAR WARRANTY

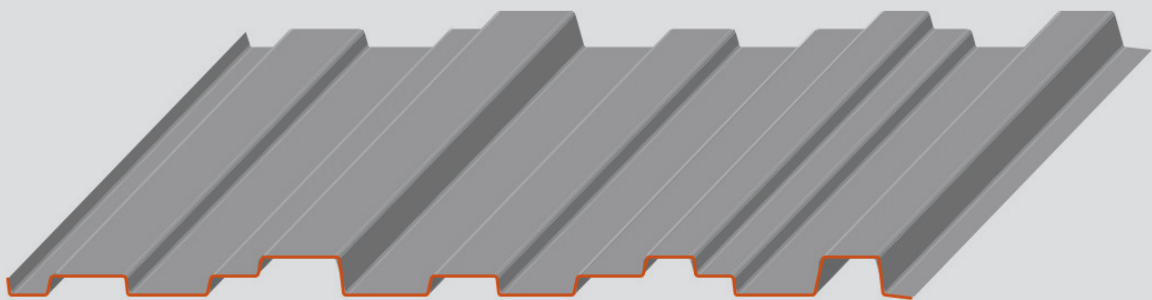
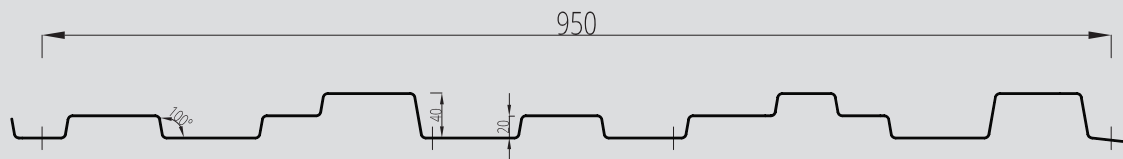
FIRE : A1
IMPACT : Q4

TRADITIONAL
INSTALLATION
METHOD

MADE IN FRANCE

DWG, BIM,
SKETCHUP FILES
TO DOWNLOAD
ON OUR WEBSITE

BROOKLYN 950



QUEENS 980



PROFILE QUEENS 980

Material	Thickness (mm)	Weight (kg/m ²)
Steel S280 GD + Z275	0.75	7.48

Coating	Norm
Hot dip Galvanized	NF EN 10346
Polyester 35μ THD	Coil coating EN 10169
Polyurethane 50μ	Coil coating EN 10169
Post-coating 60μ	
Other coating	Upon request

Profile height : 20 mm

Sheets length : 8000mm maximum

REGISTERED
DESIGNS

30-YEAR WARRANTY

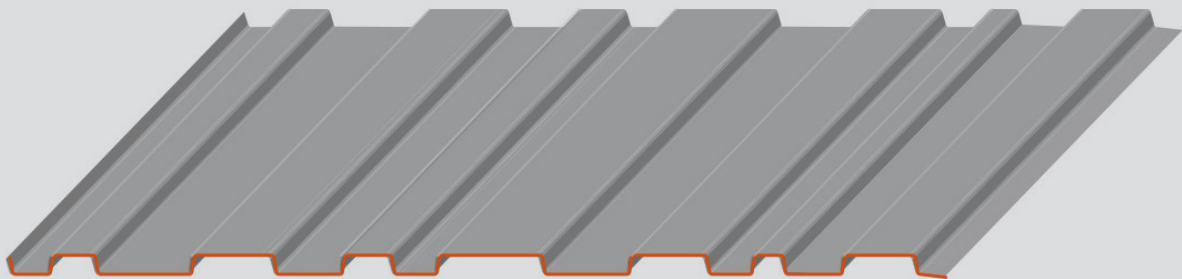
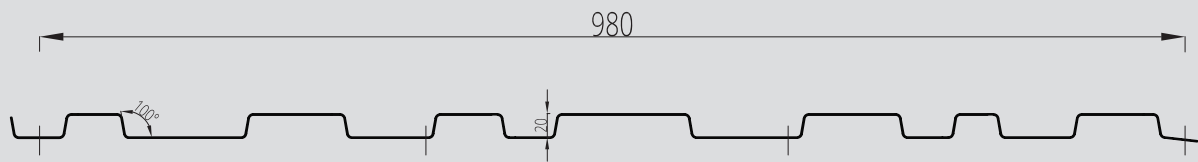
FIRE : A1
IMPACT : Q4

TRADITIONAL
INSTALLATION
METHOD

MADE IN FRANCE

DWG, BIM,
SKETCHUP FILES
TO DOWNLOAD
ON OUR WEBSITE

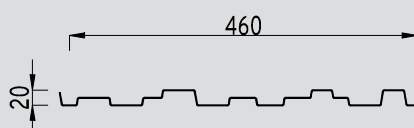
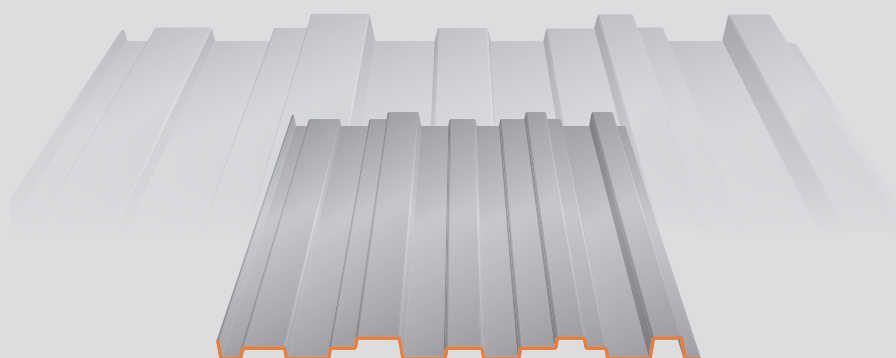
QUEENS 980



BROOKLYN **MINI** 460

Toys

THE WOLRD OF  AT **1/2** SCALE



PROFILE BROOKLYN **MINI** 460

Material	Thickness (mm)	Weight (kg/m ²)
Steel S280 GD + Z275	0.63	6.50

Coating	Norm
Hot dip Galvanized	NF EN 10346
Polyester 35μ THD	Coil coating EN 10169
Polyurethane 50μ	Coil coating EN 10169
Post-coating 60μ	
Other coating	Upon request

Profile height : 20 mm

Sheets length : 6000mm maximum

REGISTERED
DESIGNS

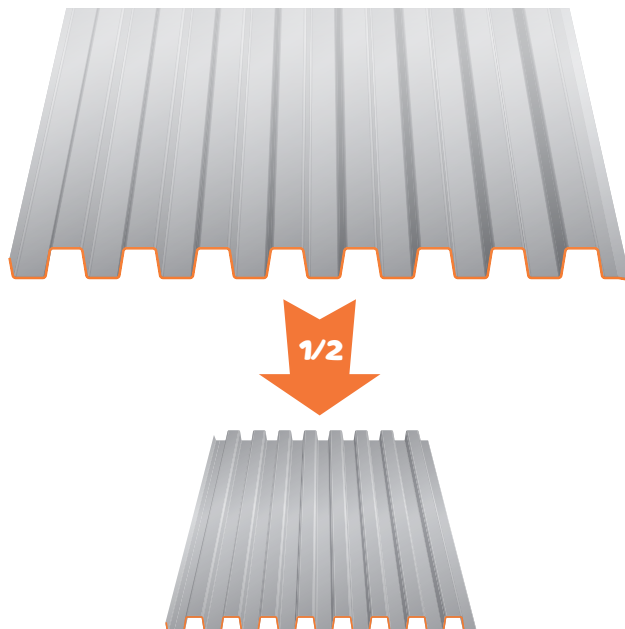
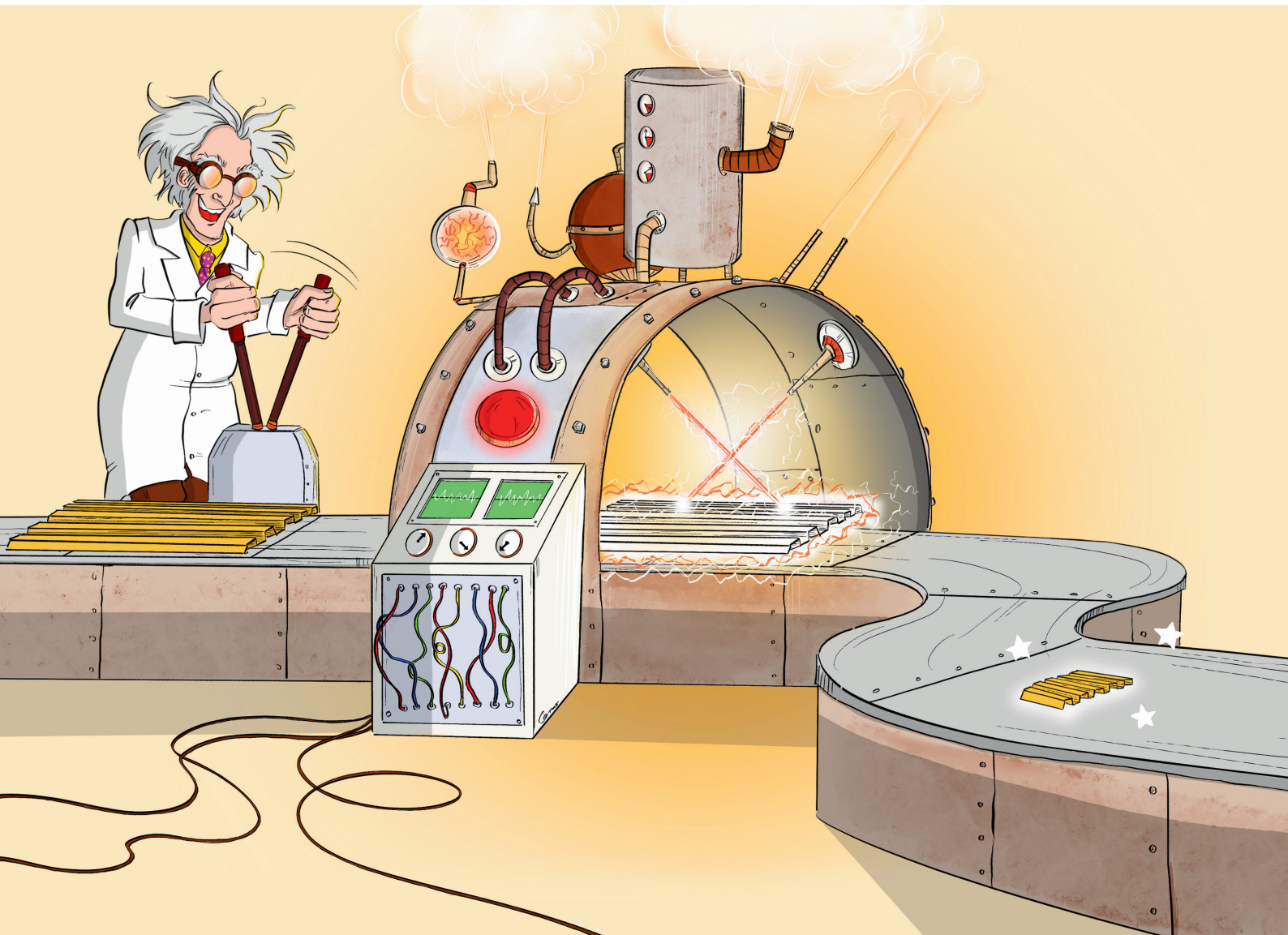
30-YEAR WARRANTY
FIRE : A1
IMPACT : Q4

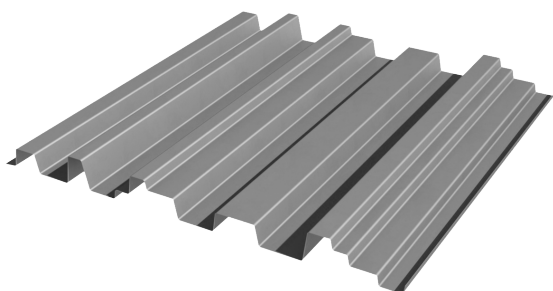
TRADITIONAL
INSTALLATION
METHOD

MADE IN FRANCE

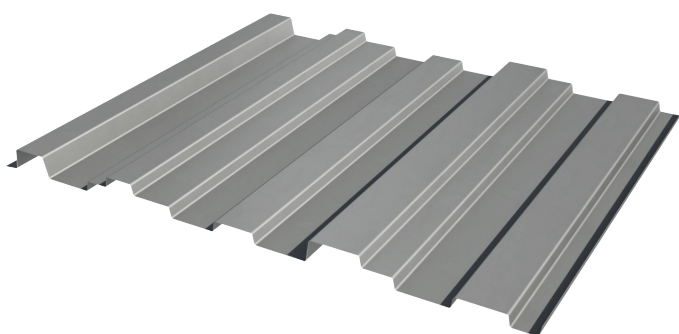
DWG, BIM,
SKETCHUP FILES
TO DOWNLOAD
ON OUR WEBSITE

OUR ICONIC PROFILES SCALED DOWN TO **Mini**®

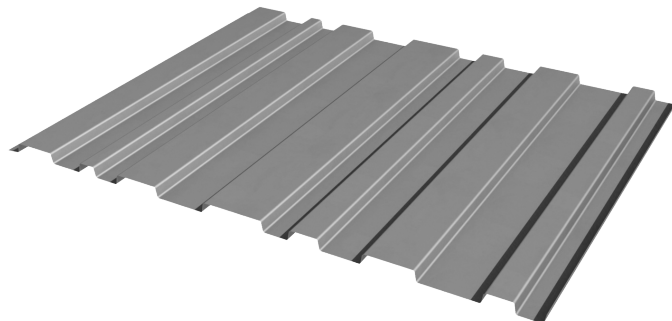




MANHATTAN 780
Profile height 60 mm

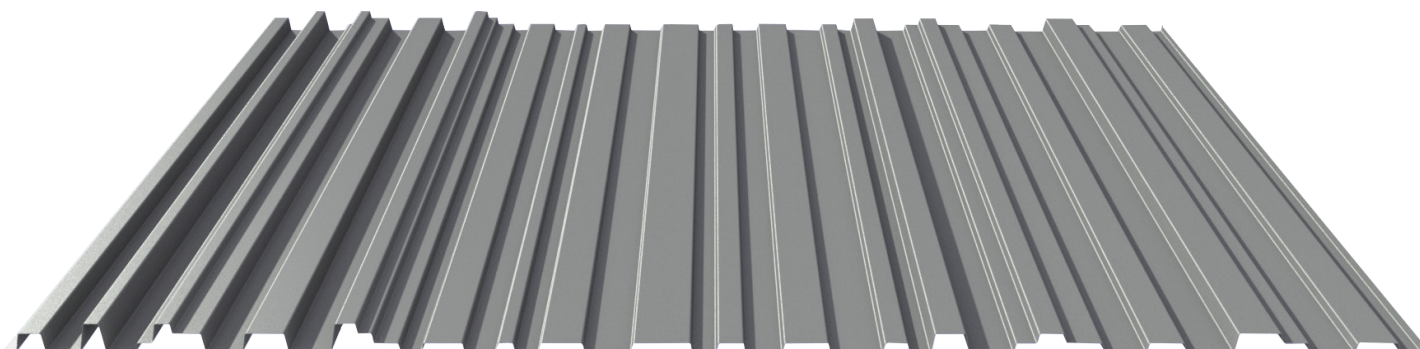


BROOKLYN 950
Profile height 40 mm



QUEENS 980
Profile height 20 mm

Create your own pattern **by mixing the three different profiles** with their different heights.



LOAD CAPACITIES

SPAN TABLES IN DAN/M², ACCORDING TO WIND LOAD

Limit deflection criterion taken into account: 1/150th according to French professional recommendations (RAGE) under wind load calculated as per NF EN 1991-1-4

Nominal thicknesses in mm

PRESSURE		Span (m)	SUCTION	
2 supports	3 supports		2 supports	3 supports
183	300	1.50	155	298
151	264	1.60	128	246
126	233	1.70	106	205
106	204	1.80	90	173
98	188	1.85	83	159
90	174	1.90	76	147
83	161	1.95	71	136
77	149	2.00	65	126
72	138	2.05	61	117
67	129	2.10	56	109
62	120	2.15	53	101

Basé sur les calculs de la tôle Queens

The NEW-YORK range metal sheets are non-structural sheets according to standard NF EN 14782:2006, as per RAGE Professional Recommendations for Cladding of July 2014, not intended to receive PPE anchoring devices according to EN 795 standard or lifelines.



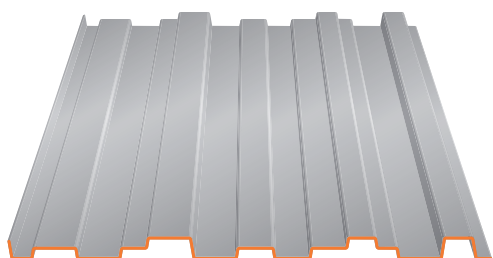
Calculation according to Eurocode III Part 1.3 (EN-1993)

Technical information obtained according to installation requirements for metal cladding from July 2014.

Seismic validation: CSTB DCC/CLC_12_229_1 study report of 02/25/2013



Toys



BROOKLYN MINI 460
Profile height 20 mm

LOAD CAPACITIES

SPAN TABLES IN DAN/M², ACCORDING TO WIND LOAD

Limit deflection criterion taken into account: 1/150th according to French professional recommendations (RAGE) under wind load calculated as per NF EN 1991-1-4

PRESSURE			Span (m)	SUCTION		
2 supports	3 supports	4 supp. & +		2 supports	3 supports	4 supp. & +
476	476	488	1.0	507	418	428
358	397	407	1.2	293	349	357
225	340	349	1.4	185	299	298
151	298	245	1.6	124	261	199
106	239	172	1.8	87	193	140
77	174	125	2.0	63	140	102
58	131	94	2.2	48	106	77
45	101	73	2.4	37	81	59
35	79	57	2.6	29	64	46
28	63	46	2.8	23	51	37
23	52	37	3.0	19	42	30

The TOYS range metal sheets are non-structural sheets according to standard NF EN 14782:2006, as per RAGE Professional Recommendations for Cladding of July 2014, not intended to receive PPE anchoring devices according to EN 795 standard or lifelines.

Test report n°R134294023-001-1



Test performed according to norm NF P 34-503-1 and interpretation according to interpretation as per Annexes E and N of the RAGE French professional recommendations

Technical information obtained according to installation requirements for metal cladding from July 2014.

Seismic validation: CSTB DCC/CLC_12_229_1 study report of 02/25/2013

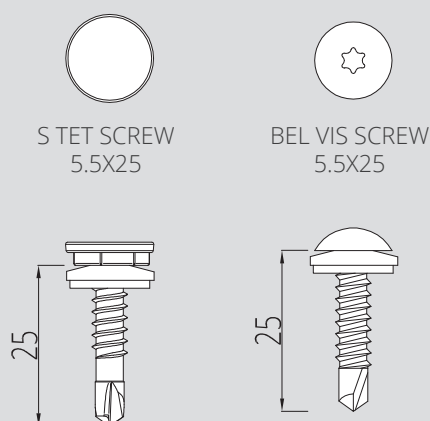


INSTALLATION

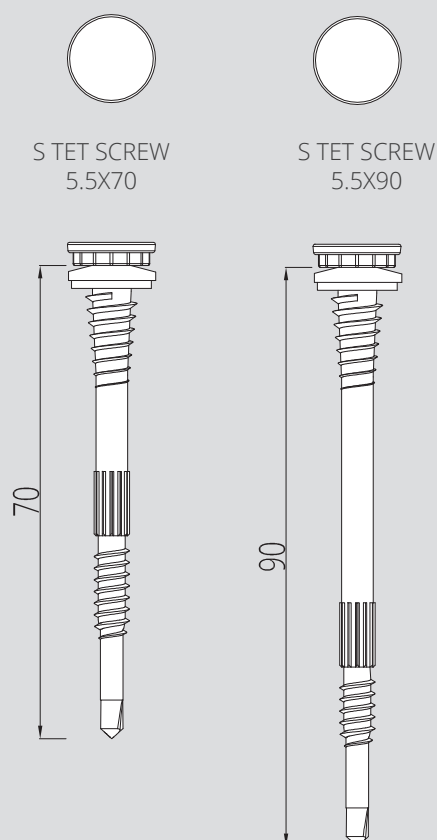
FIXING THE PANELS

With simplicity in mind, the rhythms of the NEW-YORK range should not be broken by prominent screws. It is advisable to choose the most discreet models offered by manufacturers. Here are some examples particularly well suited to the task.

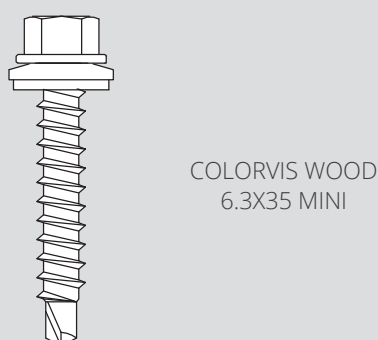
FIXING ON METAL FRAME



FIXING FOR DOUBLE-SKIN CLADDING

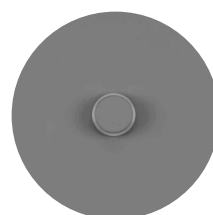


FIXING ON TIMBER FRAME



Available in the RAL color
of your choice

S TET SCREW HEAD



BEL VIS SCREW HEAD

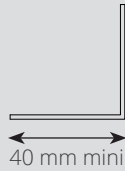


NEW-YORK range screws are a visible part of the façade.

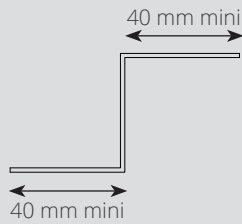
As well as complying with standards, particular care must be taken to ensure that it looks good. The shape of the screw head and its colour can be adapted to each building.

SECONDARY FRAMING

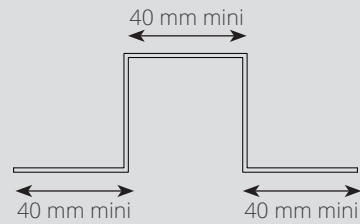
Metal framing «L»



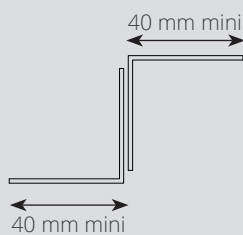
Metal framing «Z»



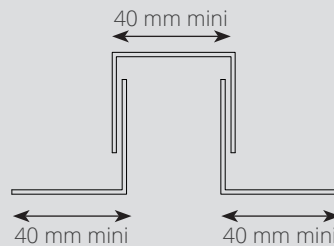
Metal framing «Ω»



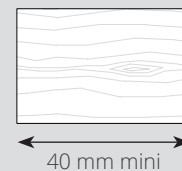
Ajustable metal framing «Z»



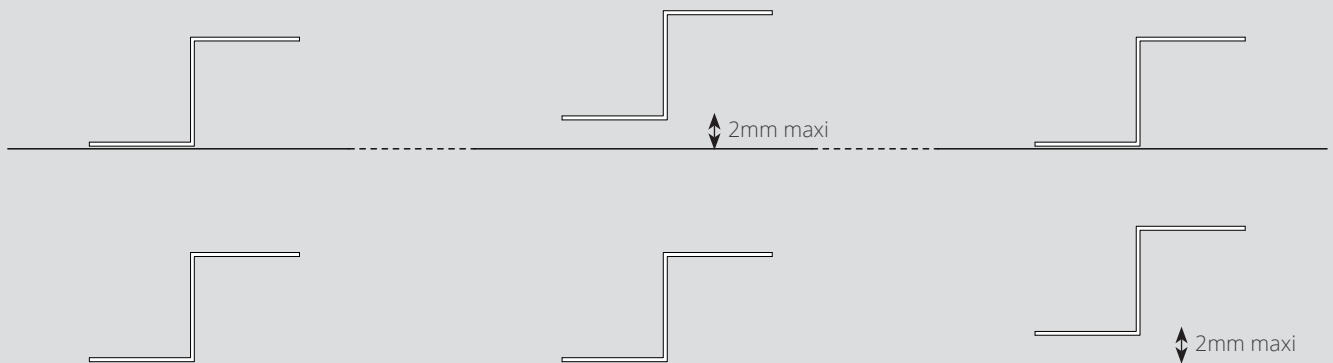
Ajustable metal framing «Ω»



Timber frame



FLATNESS OF SUPPORT

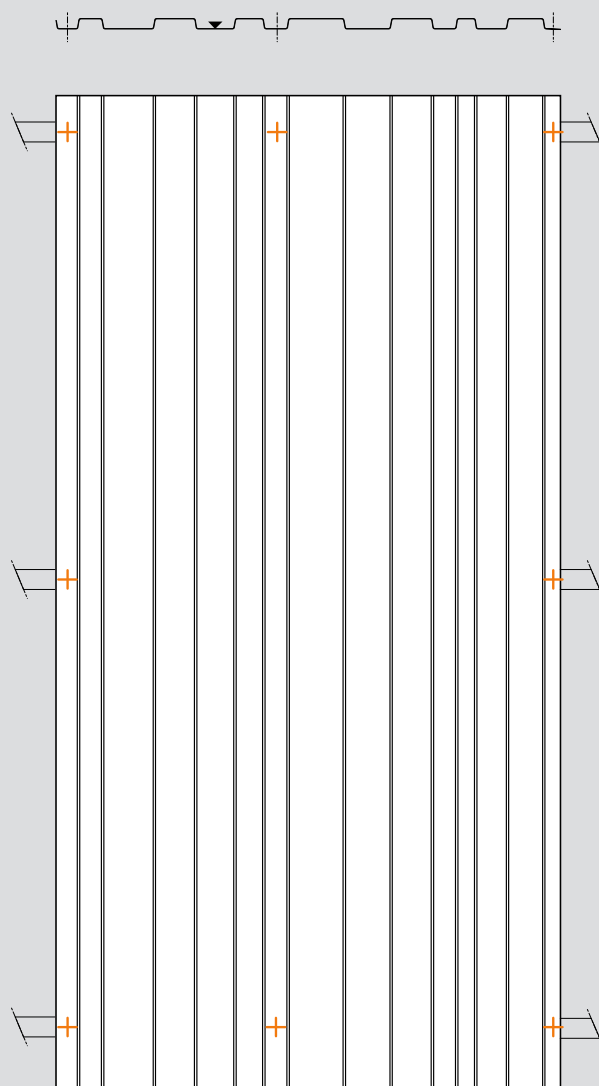


The secondary framing elements must be sized by the installation company. Metal framing should be at least 1.5mm thick.

The flatness of the support is essential when installing the panels.

Regardless of the type of secondary framework chosen (metal or wood), it must comply with a maximum permissible co-planarity of 2mm over three supports.

QUEENS 980



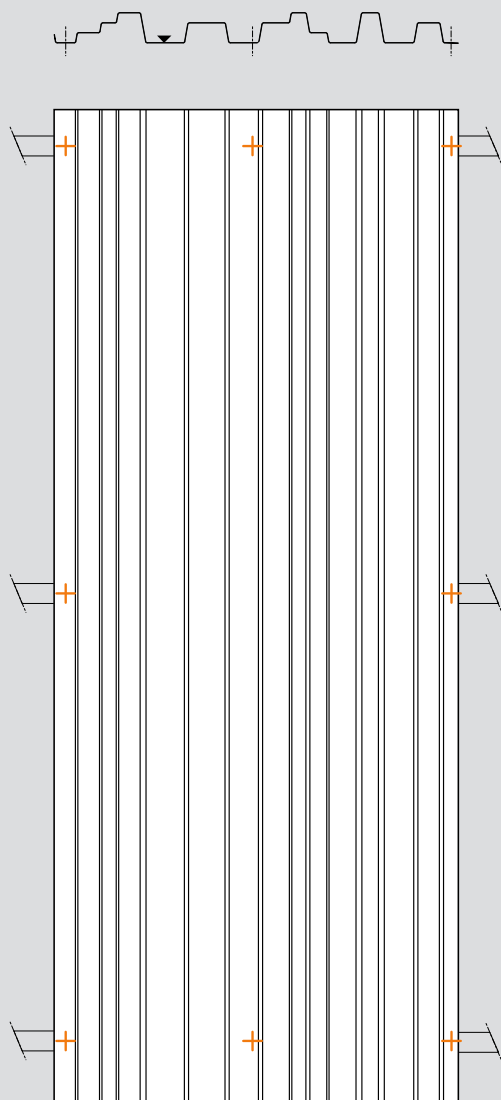
SCREWING PATTERN FOR NEW-YORK PANELS

ATELIERS 3S offers you, for each panel model, a technical optimization with minimal aesthetic impact. By placing the screws as close as possible to the ribs, they are concealed by the shadow of the wave and are more discreet.

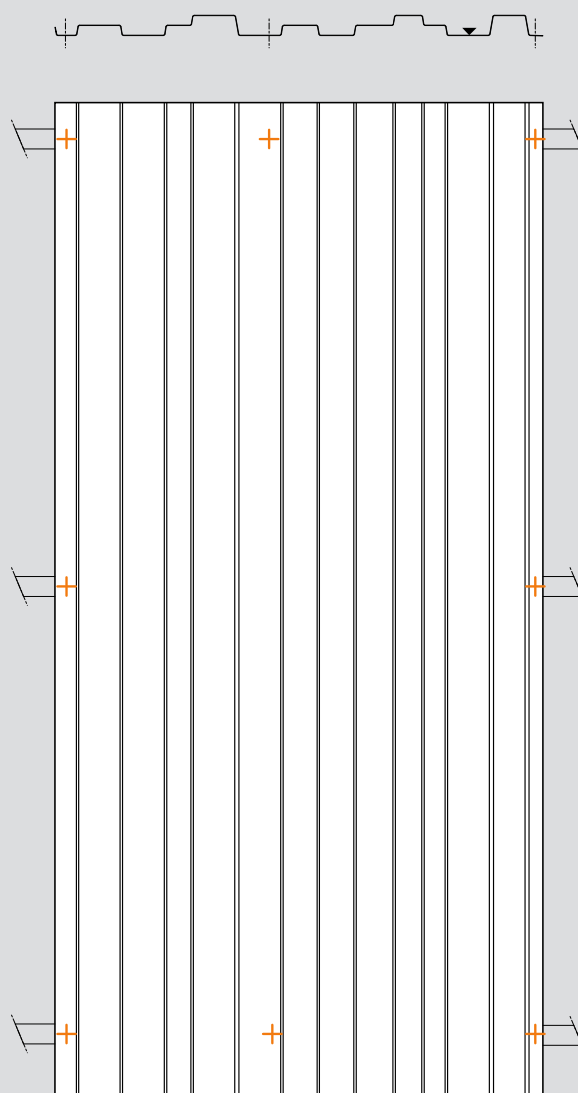
Particular attention must be paid to the tightening torque of screws located in flat areas to avoid any deformation of the facing.

When the different types of profile are mixed on the same façade, as far as possible put all the screws on the same side of the central rib, to ensure visual uniformity.

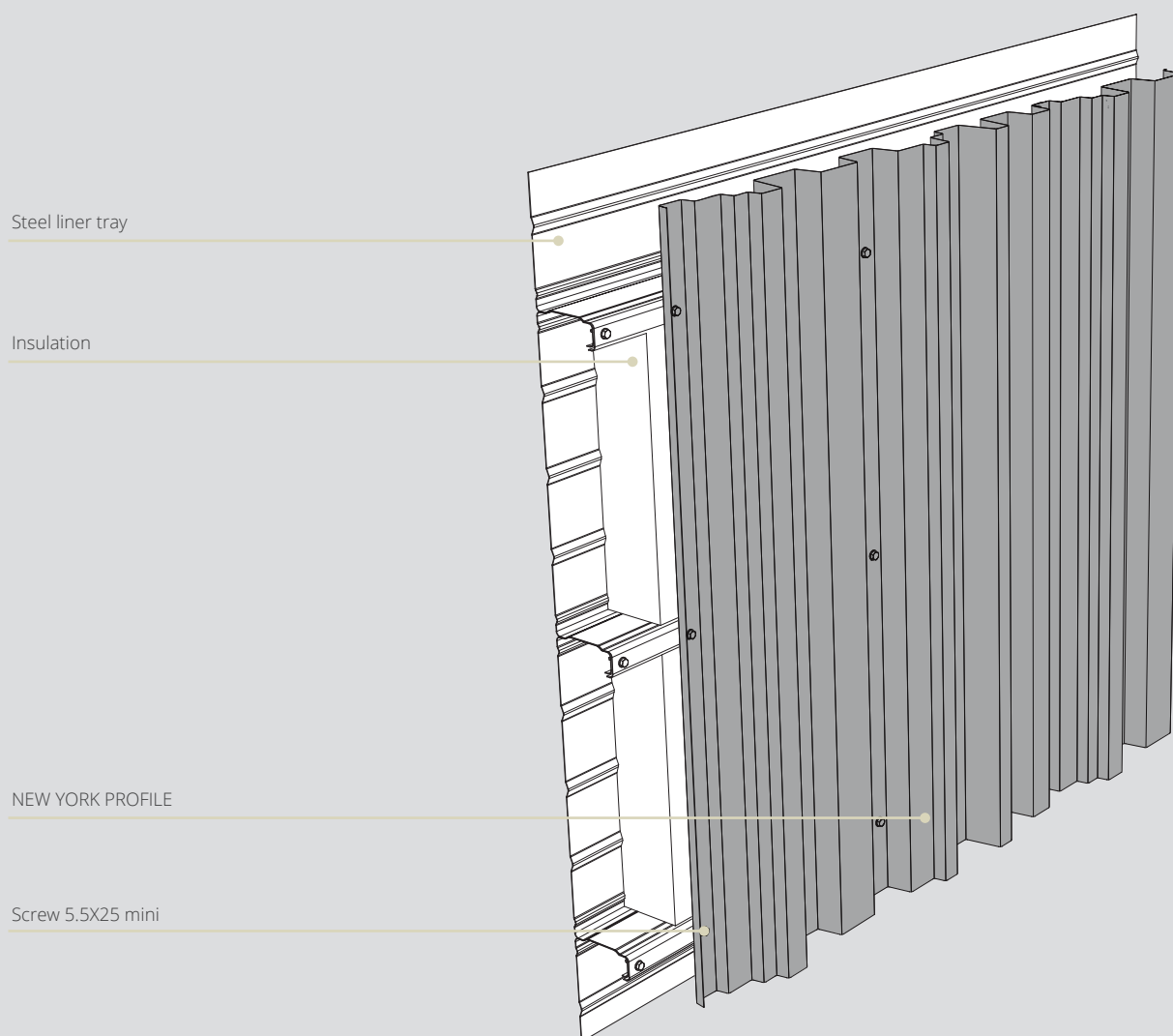
MANHATTAN 780



BROOKLYN 950



DOUBLE-SKIN INSTALLATION



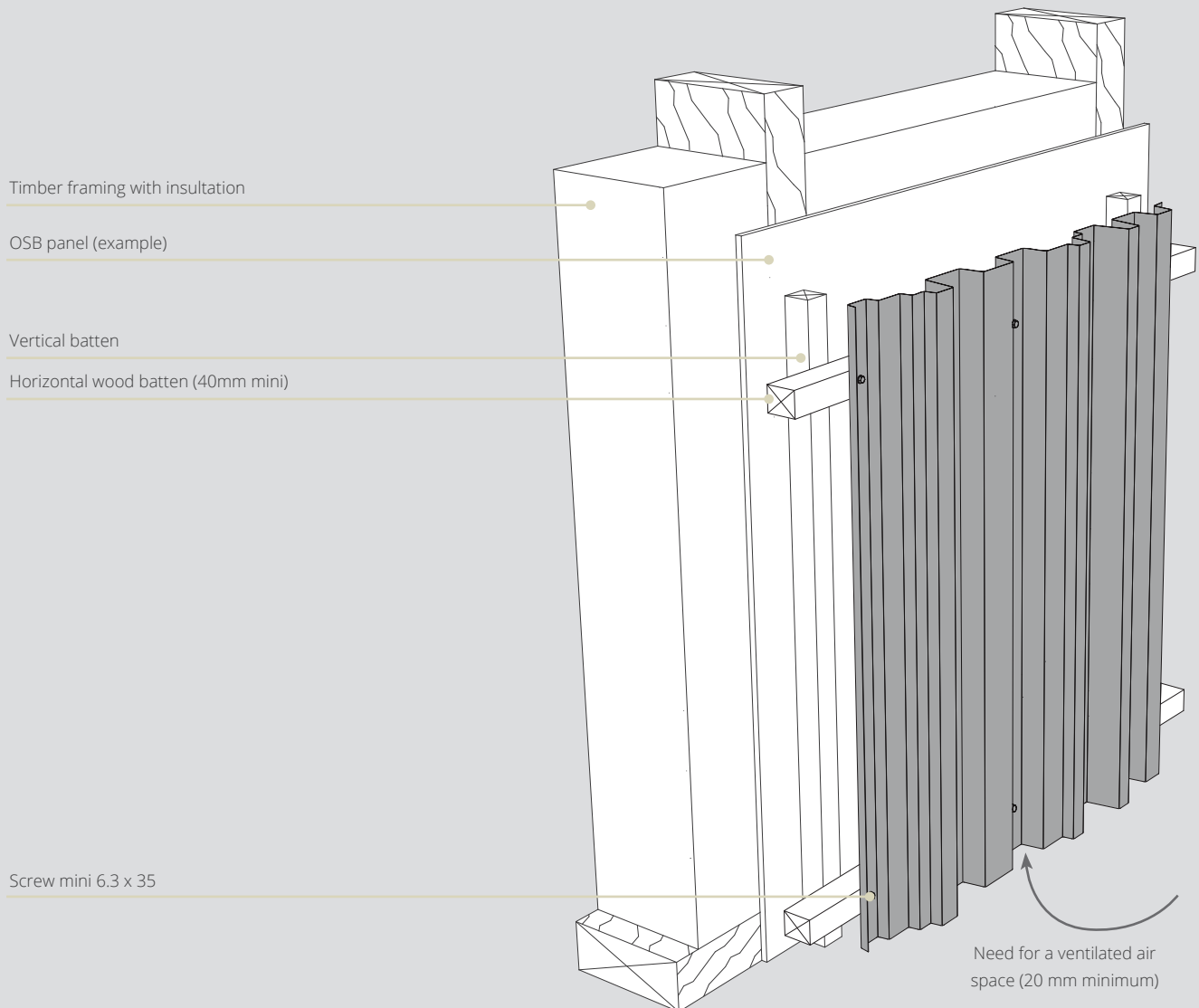
BUILDINGS WITH METAL FRAMING

NEW-YORK is a traditional cladding system installed in accordance with the RAGE rules (French steel cladding installation recommendations). It is perfectly suited to double-skin installation.

The flatness of the support is very important for a quality finish, and an adjustable secondary framework is recommended for horizontal installation.

The sheets should be fixed in accordance with RAGE recommendations, using the appropriate screws and bolts according to the type of building.

TIMBER-FRAMED WALLS



TIMBER-FRAMED WALLS

The framework and its installation must comply with Cahier CSTB 3316.

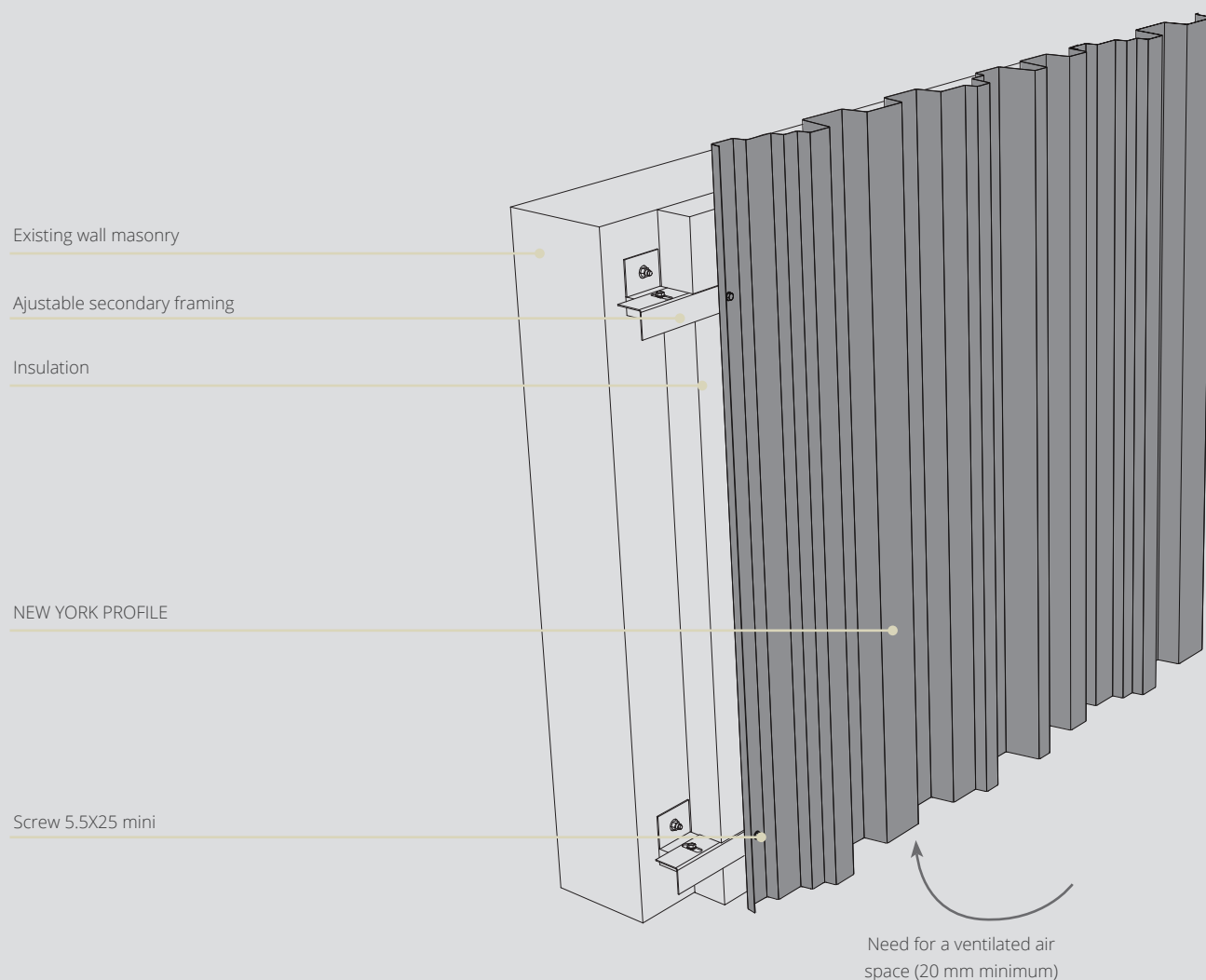
In the case of a timber frame, a ventilated air space must be provided.

NEW-YORK cladding complies with RAGE rules and does not require an additional rain screen.

The flatness of the support is very important for a quality finish, and an adjustable secondary framework is recommended for horizontal installation.

The sheets should be fixed in accordance with RAGE recommendations, using the appropriate screws and bolts according to the type of building.

EXTERNAL WALL INSULATION (EWI) ON MASONRY WALLS WITH METAL FRAMING



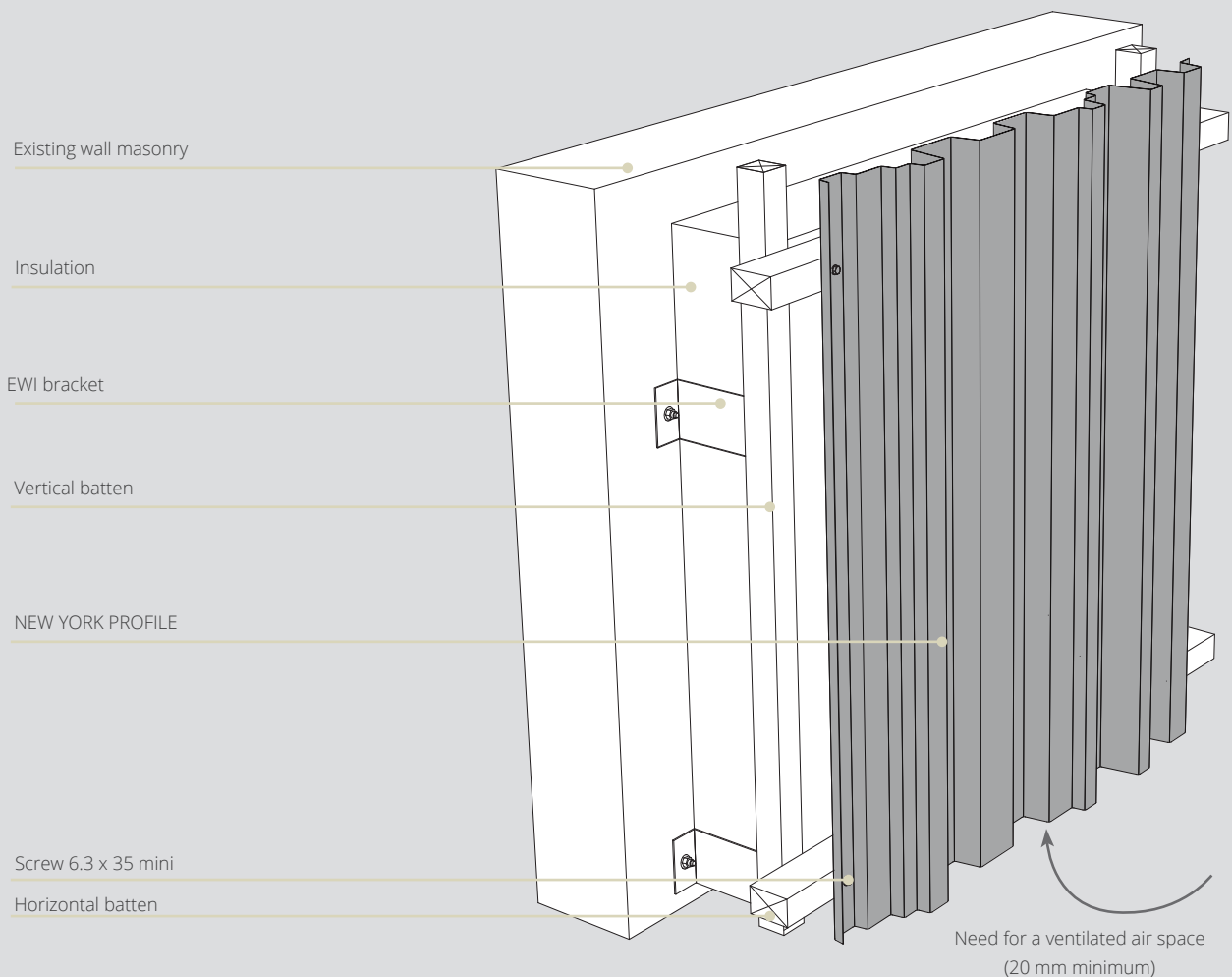
EXTERNAL WALL INSULATION RENOVATION

The NEW-YORK range can be used in the construction or renovation of buildings with external wall insulation (EWI), as all the profiles in the range are suitable for this type of installation.

The framework and its installation must comply with CSTB Specification 3194. Load-bearing profiles must be fitted at the top and bottom of the cladding, and must be sized accordingly.

The flatness of the support is very important for a quality finish, and an adjustable secondary framework is recommended.

EXTERNAL WALL INSULATION (EWI) ON MASONRY WALLS WITH TIMBER FRAMING



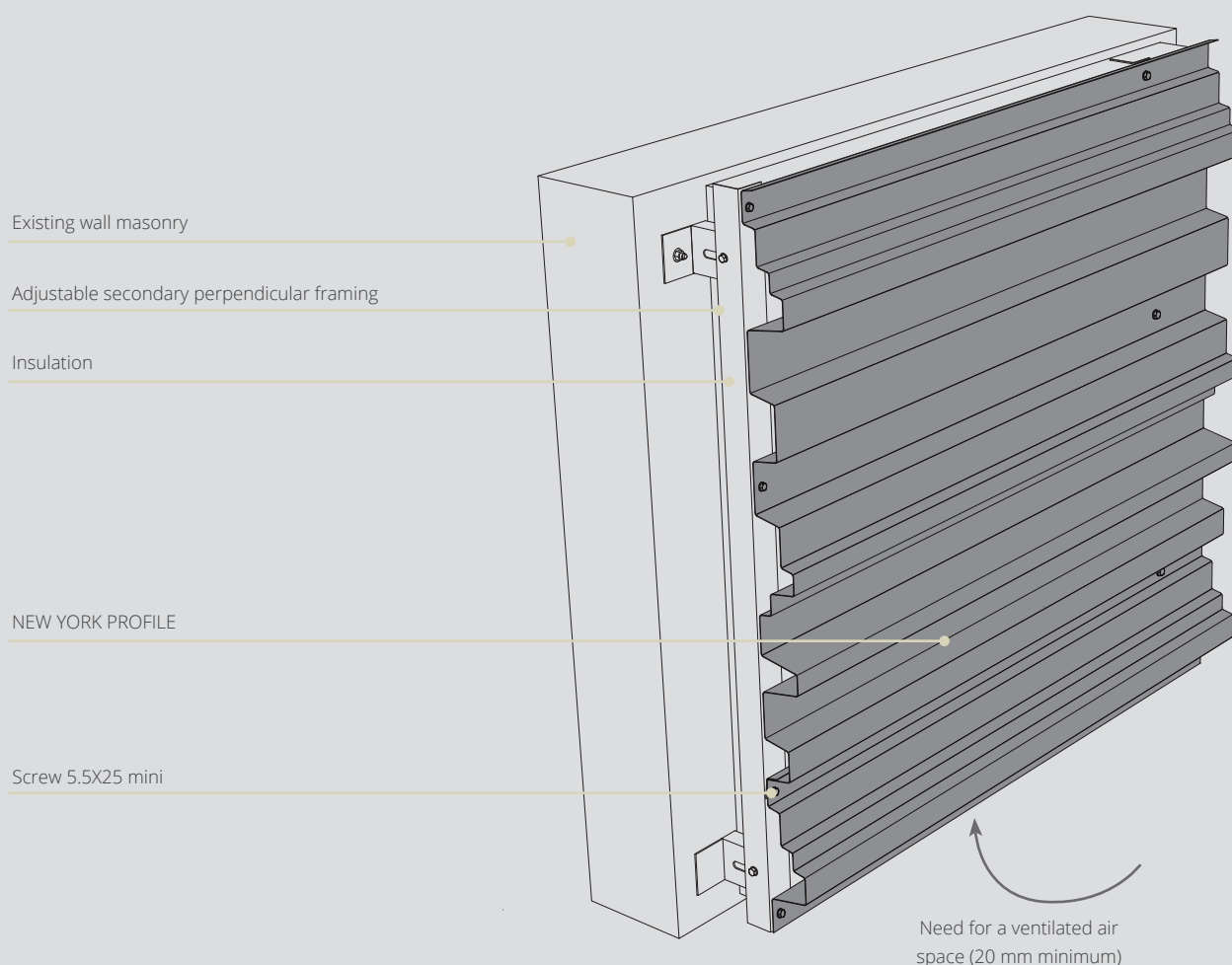
EXTERNAL WALL INSULATION RENOVATION

The flatness of the support is very important. Adjustable brackets for a quality finish, and an adjustable secondary framework is recommended.

The adjustable angle brackets ensure that the framework is perfectly flat.

The framework and its installation comply with CSTB Specification 3316.

EXTERNAL WALL INSULATION (EWI) ON MASONRY WALLS WITH METAL FRAMING / HORIZONTAL APPLICATION



HORIZONTAL INSTALLATION

NEW-YORK range like any classical steel wall cladding can be installed horizontally.

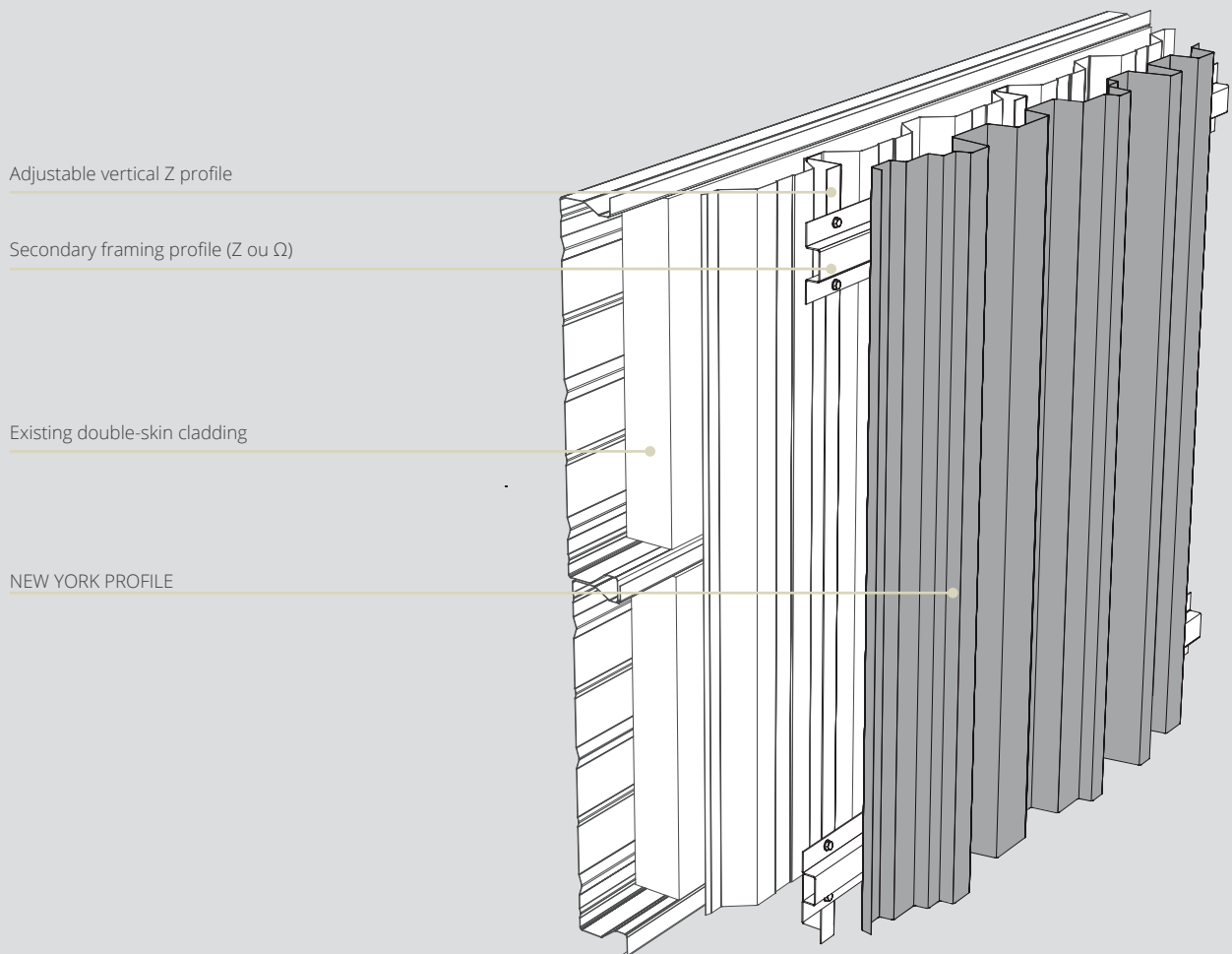
The installation must comply with the RAGE rules (French steel cladding installation recommendations). The layout must take into account the maximum length of the sheets: 8000mm. Specific finishing elements must be provided.

The cladding should be cleaned regularly with water to prevent the accumulation of dust on the horizontal parts.

The flatness of the support is very important for a quality finish, and an adjustable secondary framework is recommended for horizontal installation.

The sheets should be fixed using the appropriate screws and bolts according to the type of building and framing.

INSTALLATION ON EXISTING DOUBLE-SKIN CLADDING



RENOVATING A BUILDING WITHOUT REMOVING THE EXISTING CLADDING

The NEW-YORK range can be installed in the renovation of buildings on existing wall cladding.

The flatness of the support is very important for a quality cladding installation, Adjustable accessories must be used.



FINISHING PROFILES



Beyond the aesthetic quality of its cladding panels, a successful metal facade requires precise and well-designed finishing profiles. ATELIERS 3S takes particular care to offer discreet elements that connect with the styles of the associated cladding.

In these pages, you'll find a selection of models that are fully adaptable to the actual dimensions of your project.

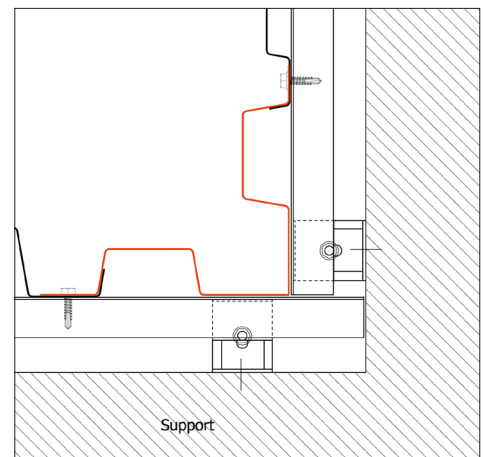
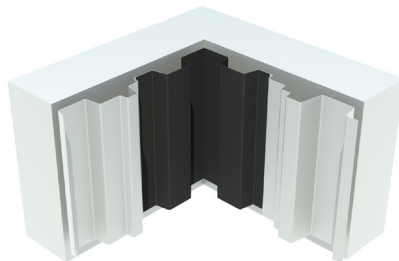
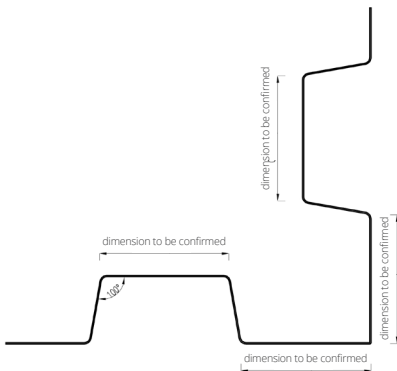
No matter how precise your installation is, finishing profiles will always be custom-made elements. Please don't hesitate to provide us with your exact dimensions and any other installation drawings.

NEW YORK cladding has variable ribs heights, so it is recommended that the total depth of the cladding, it is recommended that the total depth of the cladding of 60 mm be taken into account for each finishing profiles design.

In areas with complex single points, the QUEENS model and its constant low height of 20 mm will make finishing profiles much easier.

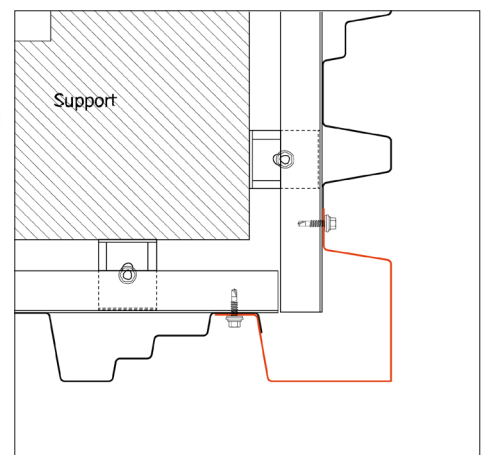
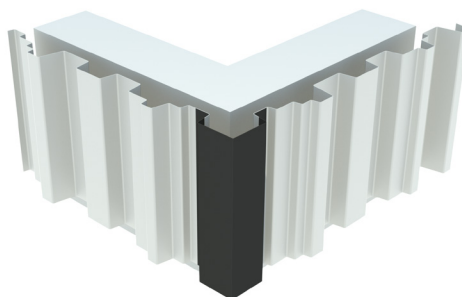
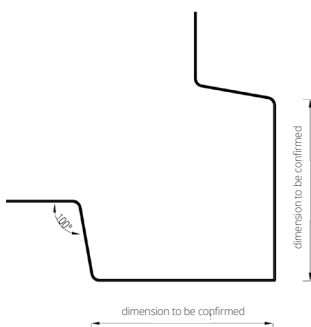
INSIDE CORNER

VERTICAL APPLICATION

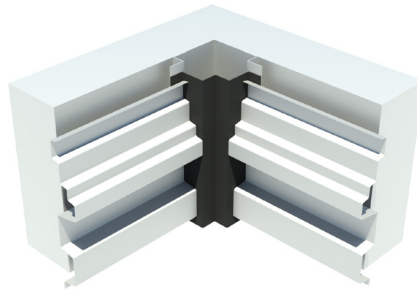
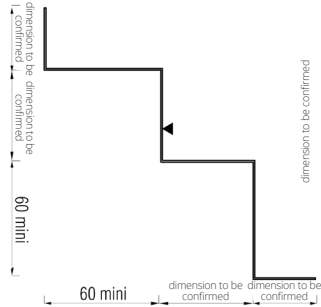


OUTSIDE CORNER

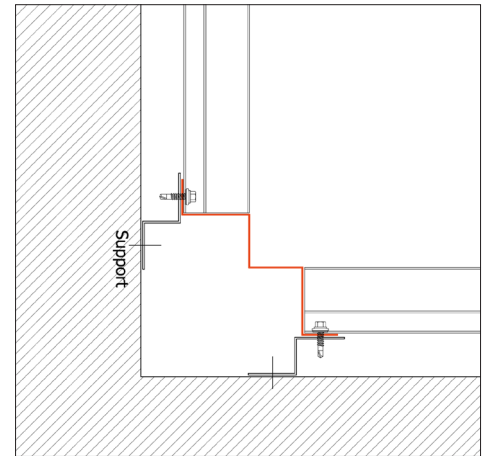
VERTICAL APPLICATION



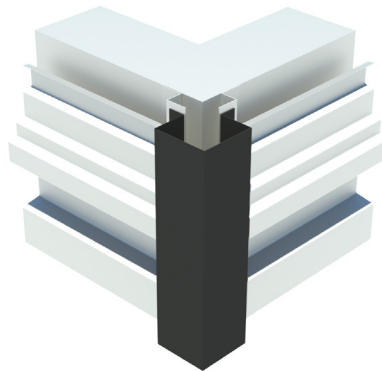
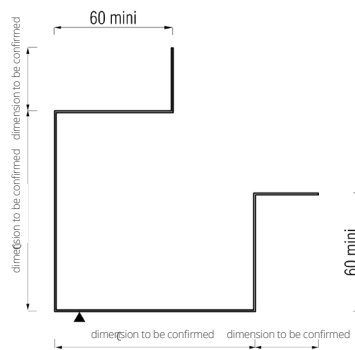
INSIDE CORNER



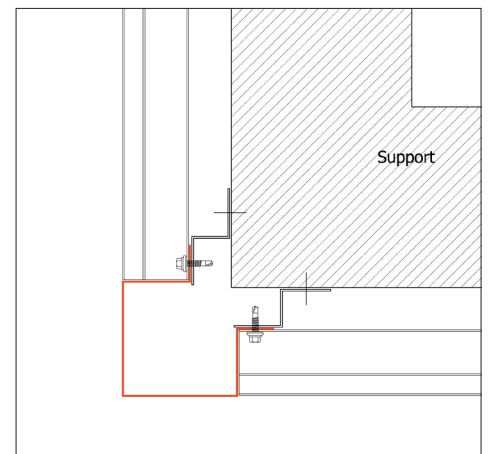
HORIZONTAL APPLICATION



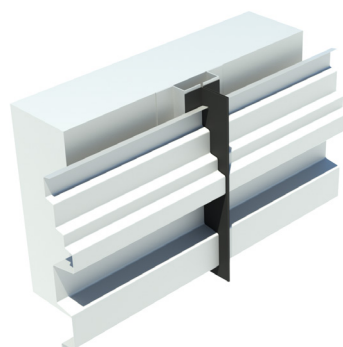
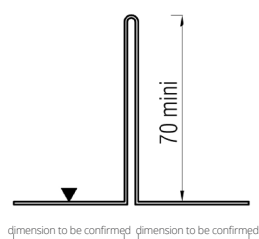
OUTSIDE CORNER



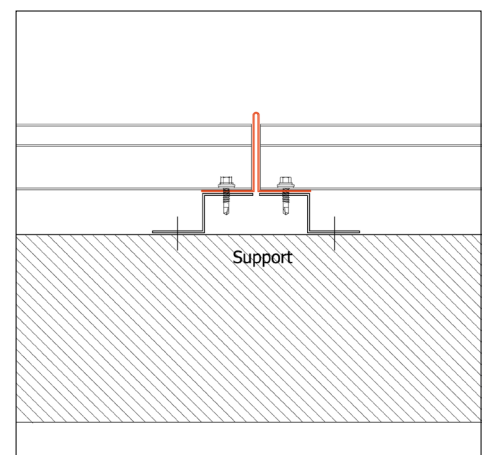
HORIZONTAL APPLICATION



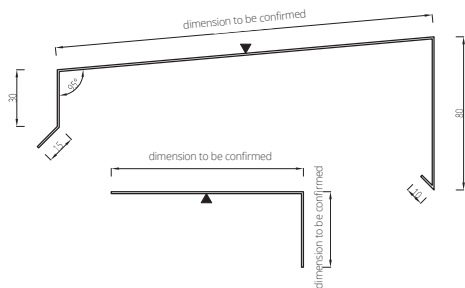
JUNCTION



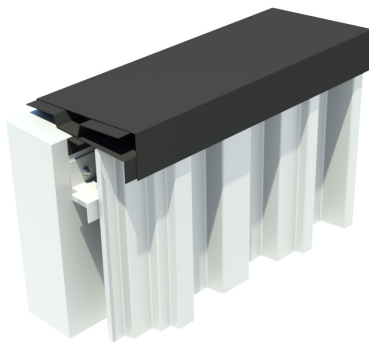
PIN JOINT HORIZONTAL APPLICATION



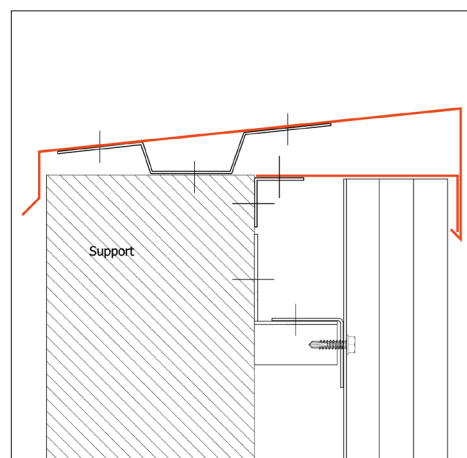
FACADE TOP



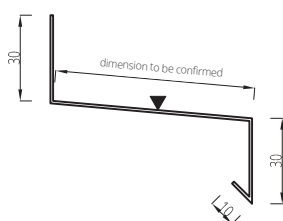
Lg : 4,0 m maxi
Th : 0.75 mm



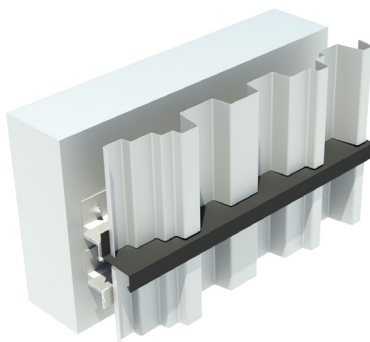
COPING



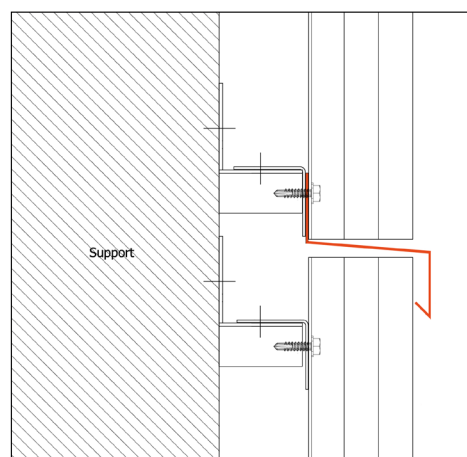
JUNCTION



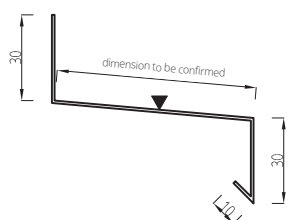
Lg : 4,0 m maxi
Th : 0.75 mm



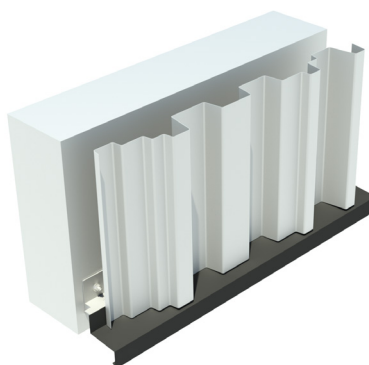
DRIP EDGE VERTICAL APPLICATION



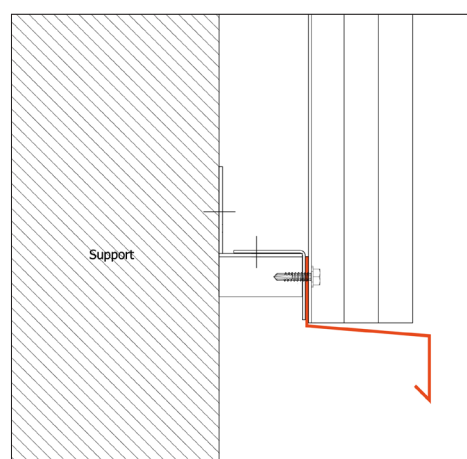
FACADE BOTTOM



Lg : 4,0 m maxi
Th : 0.75 mm

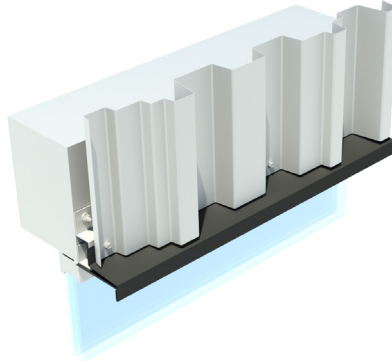
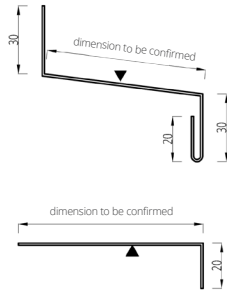


DRIP EDGE

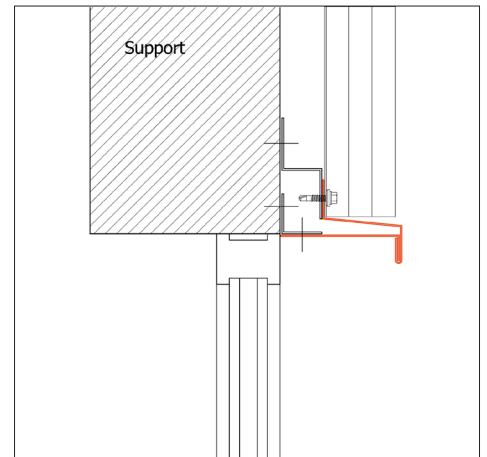


OPENING

LINTEL

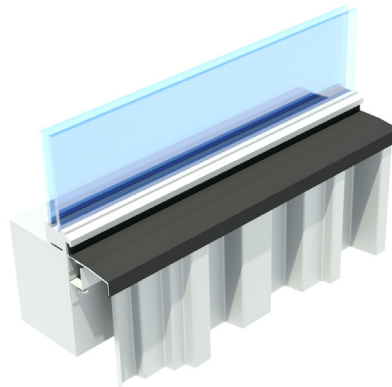
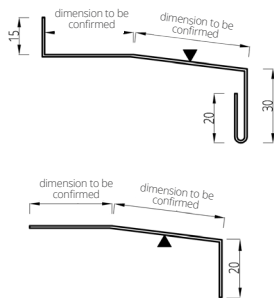


Lg : 4,0 m maxi
Th : 0.75 mm

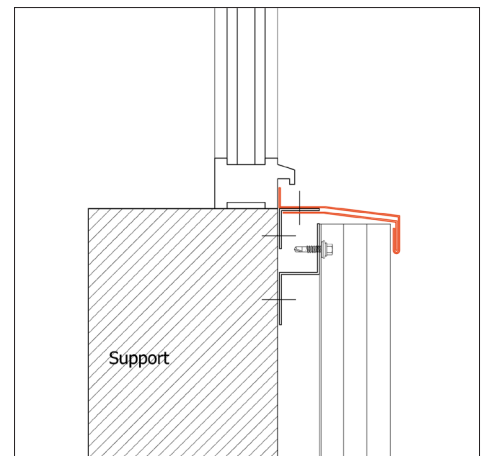


OPENING

SILL

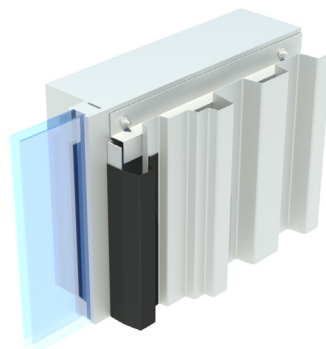
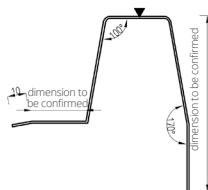


Lg : 4,0 m maxi
Th : 0.75 mm

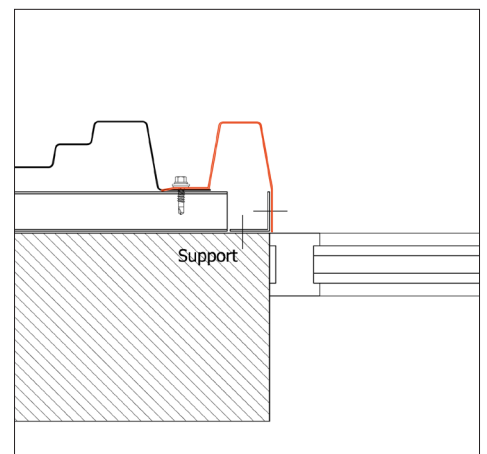


OPENING

JAMB



Lg : 4,0 m maxi
Th : 0.75 mm





PROJECTS GALLERY

Your source of inspiration

An exclusive search experience,
available only on the **ATELIERS**  app.

Discover our projects from a new perspective



BY
PROJECTS

BY
PRODUCTS

BY
COLORS

BY
LOCATION

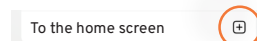


Tip to add the app directly
to your home screen
without going through the
Store:

1- At the bottom of your page click here:



2- Scroll and choose the option:







COLOR CHART

Colours and materials **used**

ORIGINAL

Exclusive, ultra resistant colours that meet the requirements of the 3S® range.

METALLIC



METAL 0207 35µm



PEARL 0208 35µm



PLATINUM 0206 35µm

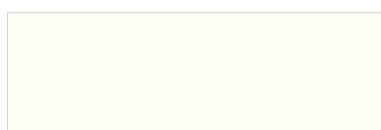


INTENSE GOLD 6995 35µm



COPPER 0603 35µm

SATIN



COTTON 0201 35µm



DUVET 0202 35µm



POWDER 0203 35µm



RAL 7037 35µm



RAL 7016 - ANTHRACITE GREY 35µm



RAL 7021 - BLACK GREY 25µm



RAL 9005 - DEEP BLACK 35µm



RAL 5008 - OCEAN 25µm



RAL 7032 - SILEC GREY 35µm



RAL 7022 - EGGSHELL 35µm



POP 0204 35µm



SPRING 0205 35µm



Please contact us for further information on our RAL colour chart and our special custom-designed textured coatings.

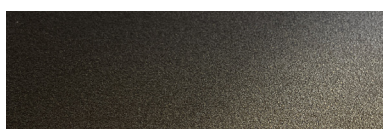
Colours and materials **used**

MATERIALS

Coatings that are as fabulous as the materials.



OXYDE 0602 35µm



DARK BRONZE 0604 50µm



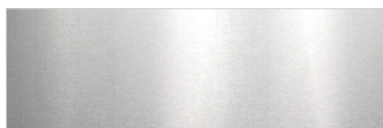
INTENSE GOLD 6995 35µm



COPPER 0603 35µm

ROUGH

Reveal the nobility of raw materials.



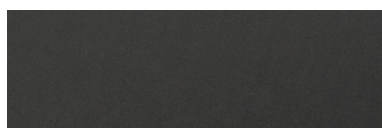
STAINLESS STEEL 0302
Shiny



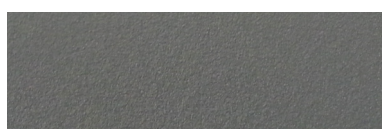
SURFACE GRAIN 0301
Galvanized steel with high-precision grain

ZINC SPIRIT

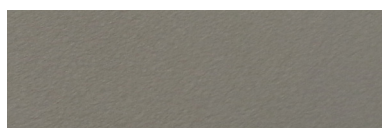
Deep matte and very fine texture for a true-to-life zinc effect.



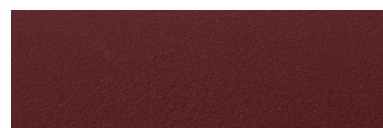
NERRO 0104 50µm



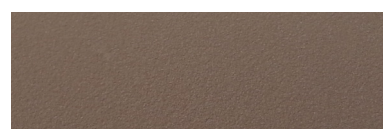
GALEO 0103 50µm



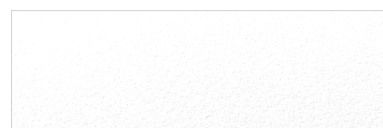
AZURO 0102 50µm



VINO 0106 50µm



VOLCANO 0101 50µm



BIANCO 0105 50µm

ONWOOD

True-to-life matte wood texture. Available in all wood finish or with optional black strips "Colorigami® Process".



SILVER TECK (BLACK BANDS) 0409 47µm



SILVER TECK (ALL WOOD) 0408 47µm



NATURAL OAK (BLACK BANDS) 0406 47µm
0416 (MINI)
0426 (MAXI)



NATURAL OAK (ALL WOOD) 0403 47µm



HAZELNUT OAK (BLACK BANDS) 0405 47µm



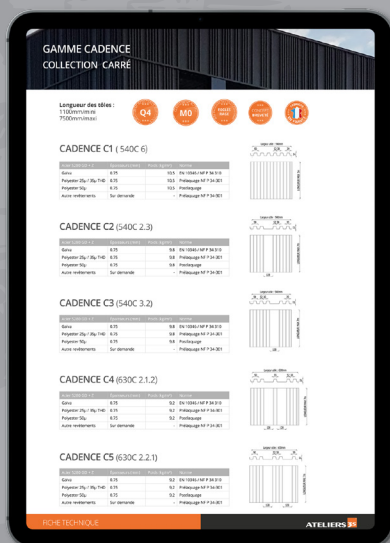
HAZELNUT OAK (ALL WOOD) 0402 47µm



COFFEE OAK (BLACK BANDS) 0407 47µm



COFFEE OAK (ALL WOOD) 0404 47µm



- TECHNICAL DATASHEETS
- INSTALLATION INSTRUCTIONS
- GUIDES TO FINISHING FOLDS
- CCTP (SPECIAL TECHNICAL SPECIFICATIONS)
- FILES DWG, BIM, SKETCHUP
- ETC.

Find us at:
www.ateliers3s.com



VISIT OUR SHOWROOM

100 AVENUE DAUMESNIL 75012 PARIS - FRANCE

GRUPE



FIMAVI

N E W Y O R K

ATELIERS 
metal cladding creators

Rue verte, ZI Ladoux - F-63118 Cébazat - France
T. +33(0)4 73 88 59 50
contact@ateliers3s.com - www.ateliers3s.com

02/02/2026