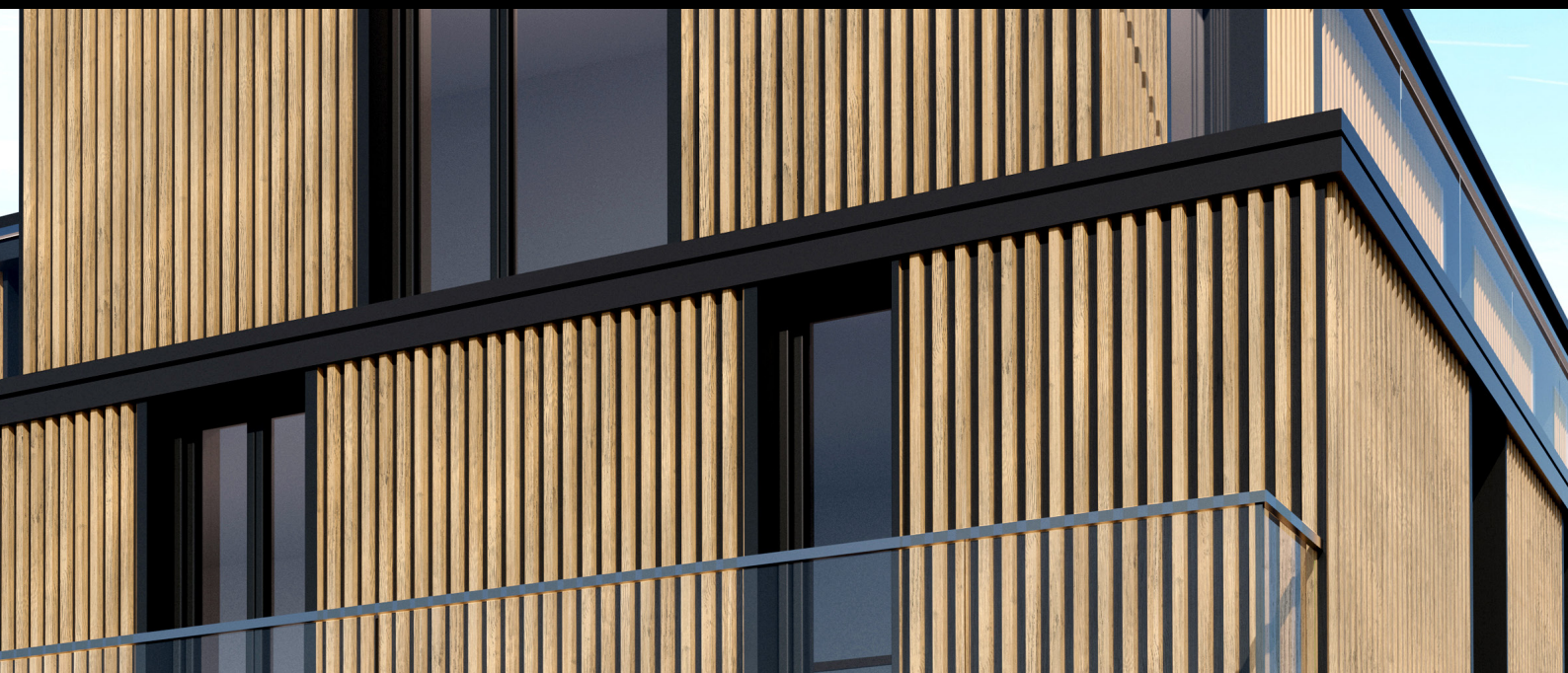


# On Wood<sup>®</sup>



THE STEEL RANGE THAT SHOWCASES ITS WOOD OPTICS

**ATELIERS** <sup>®</sup>  
metal cladding creators







# SUMMARY

## ONWOOD

ONWOOD RANGE	4
COLORIGAMI® PROCESS	6
THE PROFILES	8
BARO 710 .....	10
PLANCHETTE 800 .....	12
PEIGNE 500 .....	14
CLAIREWOA 880 .....	16
ALABAMA 1060 .....	18
BARO MINI 360 .....	20
CLAIREWOA MINI 440 .....	22
BARO MAXI 630 .....	24
PLANCHE MAXI 900 .....	26
PEIGNE MAXI 500 .....	28
CHANFREIN MAXI 710 .....	30
CLAIREWOA MAXI 800 .....	32
BUCHETTE .....	34
PANORAMA ONWOOD RANGE	36
SPAN TABLES	38
INSTALLATION	56
FINISHING PROFILES	68
PROJECT GALLERY	76
COLOR CHART	80



# OnWood®

THE STEEL RANGE THAT  
SHOWCASES ITS WOOD OPTICS

## 15 varied profiles which reinvent wood

With its horizontal and vertical profiles, the ON WOOD® range revisits and pays tributes to the main uses of wood in facades.

All this while still offering the speed and ease of installation of a metal cladding, guaranteed and maintenance-free.



The background of the slide features three overlapping grey paper strips, each with a stylized 'KS' logo cut out. These strips are laid on a wooden surface with vertical grain. The strips are slightly offset from each other, creating a layered effect. The 'KS' logo is a bold, stylized font where the letters are interconnected.

## Colorigami® process

2-years of research were necessary to create a totally revolutionary coating process.

The paints strips combine with the ribbing to produce hyper-realistic 3D effects.



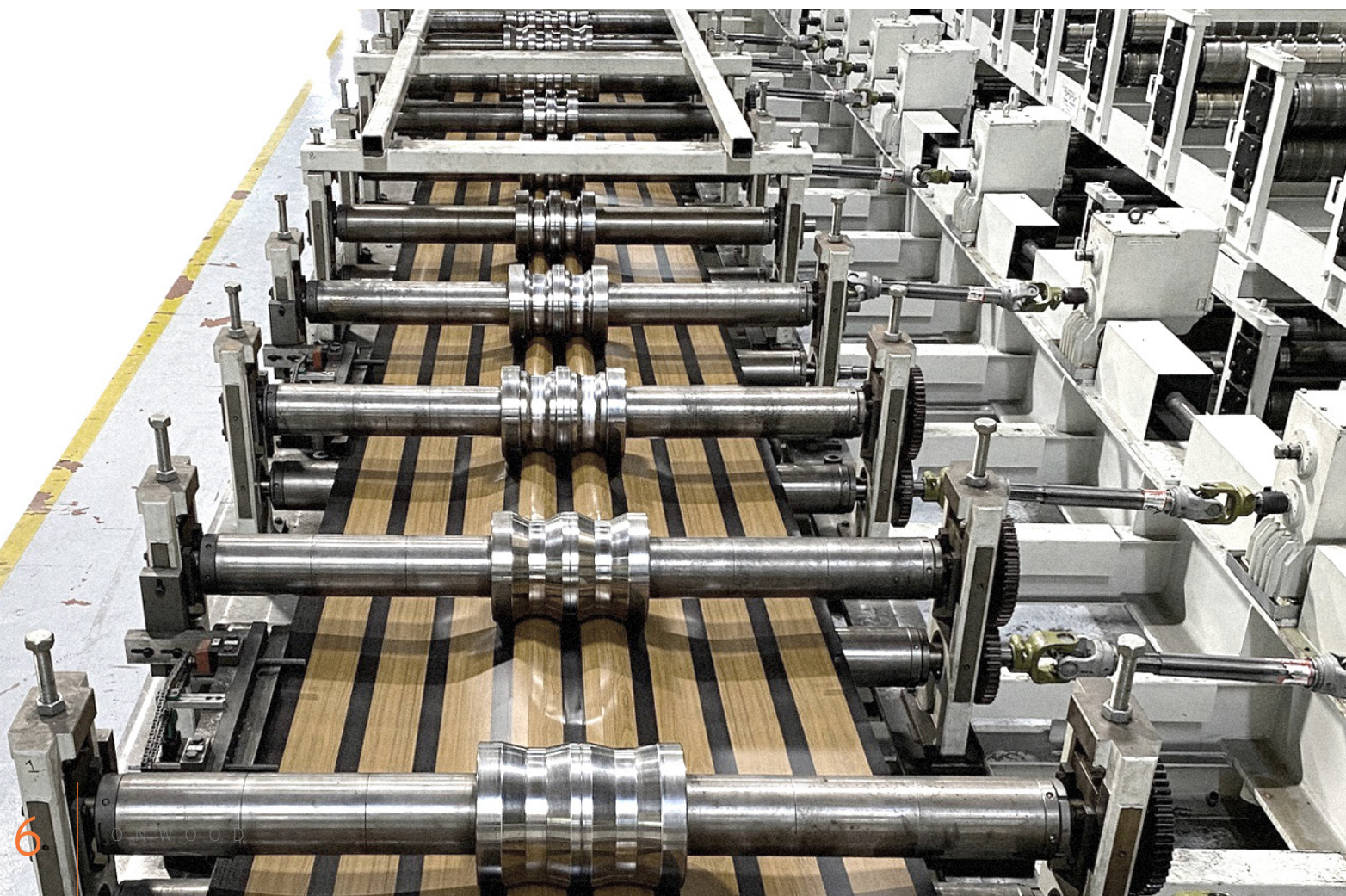
## COLORIGAMI® PROCESS

---

The ONWOOD range showcases 4 wood species. We wanted a hyper-realistic fine grain, treated with ultra matte coating, to resemble as much as possible to the very low sheen of natural wood. When present, the black strips

The paints strips combine with the ribbing to produce hyperrealistic 3D effects.

When present, the black strips in the base of the ribs are also matte coated and designed to fade into the background.





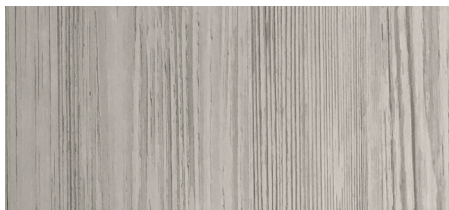
## 4 EXCLUSIVE COLORS FOR 8 POSSIBILITIES

NEW

Silver Teck



Wood with black strips

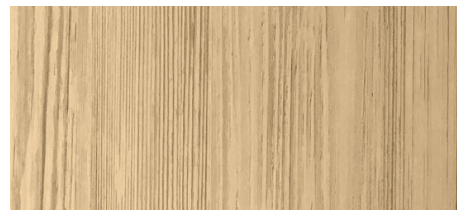


Plain wood

Natural Oak

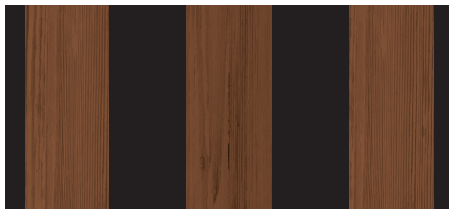


Wood with black strips

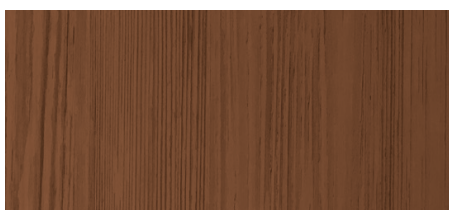


Plain wood

Hazelnut Oak



Wood with black strips

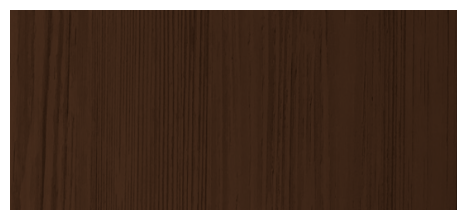


Plain wood

Coffee Oak



Wood with black strips



Plain wood



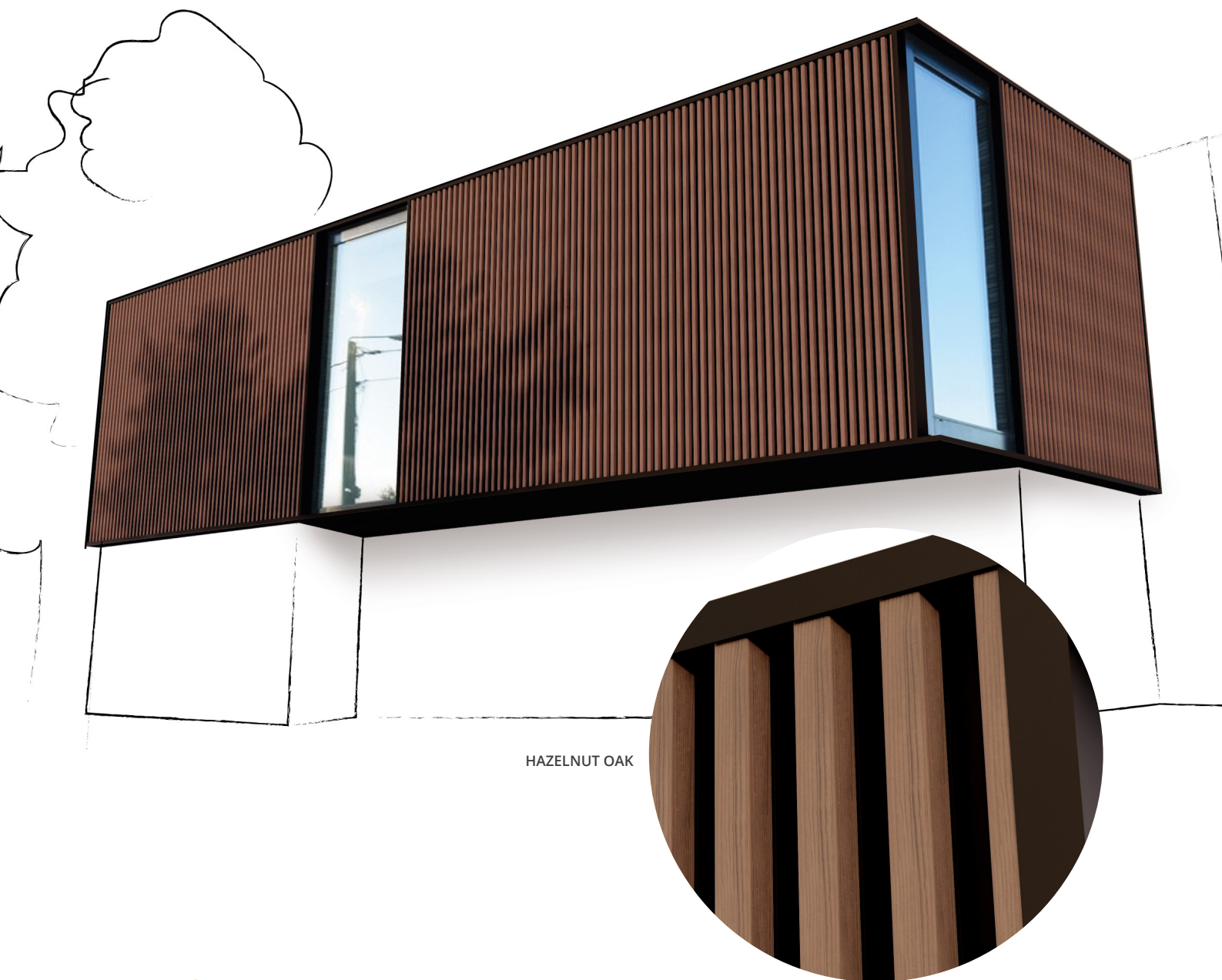




# THE PROFILES



## BARO 710



HAZELNUT OAK

### BARO 710® PROFILE

Thanks to its ribs which take up the most common sections of the 37x37 mm wooden battens, BARO® creates the wood wall cladding wonderfully.

Material	Thickness (mm)	Weight (kg/m <sup>2</sup> )
Steel S280 GD + Z275	0.75	10.1

Coating	Standard
Polyester 47μ	Coil coating EN 10169

Effective width : 710 mm - Panel Length : 13000 mm maximum

Vertical or horizontal application

REGISTERED  
PATENT  
AND DESIGNS

30-YEAR  
WARRANTY

FIRE : A1  
IMPACT : Q4

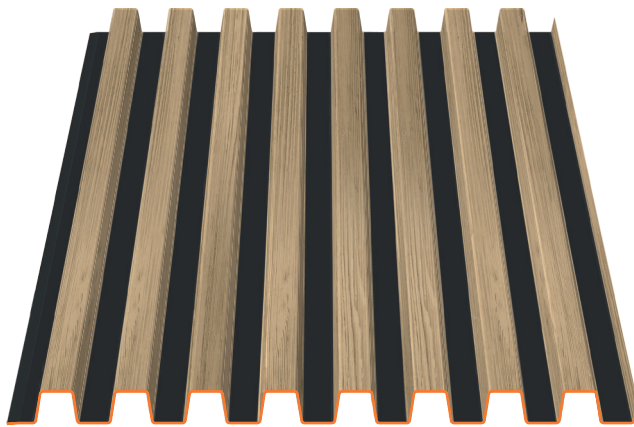
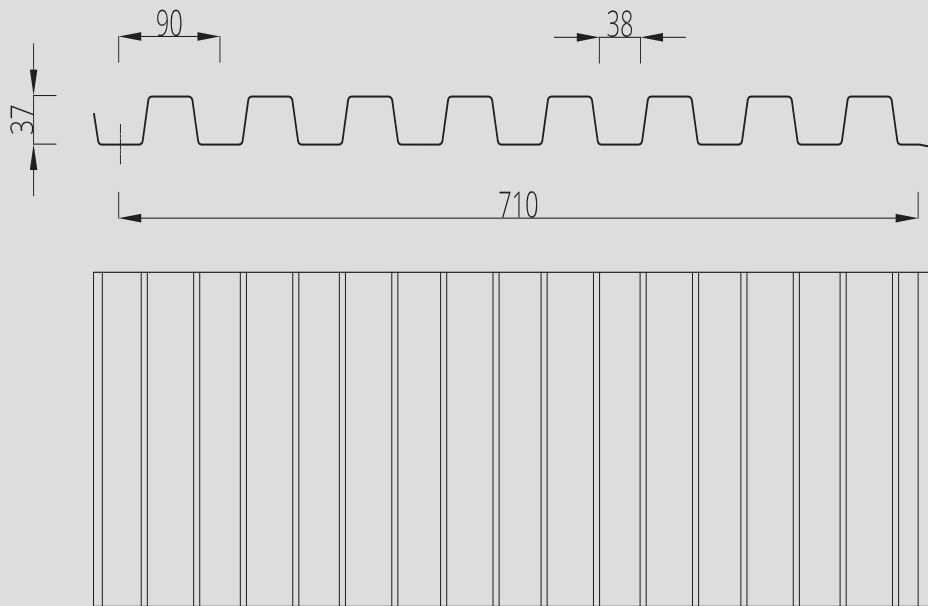
TRADITIONAL  
INSTALLATION  
METHOD

MADE IN FRANCE

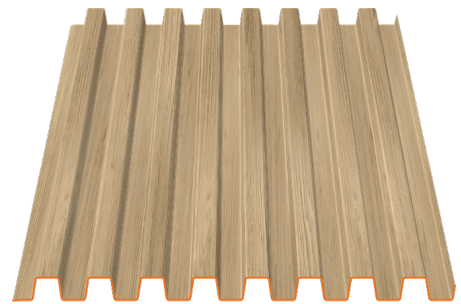
DWG, BIM,  
SKETCHUP FILES  
TO DOWNLOAD  
ON OUR WEBSITE



## BARO 710



WITH BLACK STRIPS



PLAIN WOOD

### NATURAL OAK

PLAIN WOOD

WITH BLACK STRIPS



### HAZELNUT OAK

PLAIN WOOD

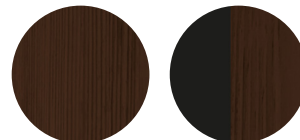
WITH BLACK STRIPS



### COFFEE OAK

PLAIN WOOD

WITH BLACK STRIPS



### SILVER TECK

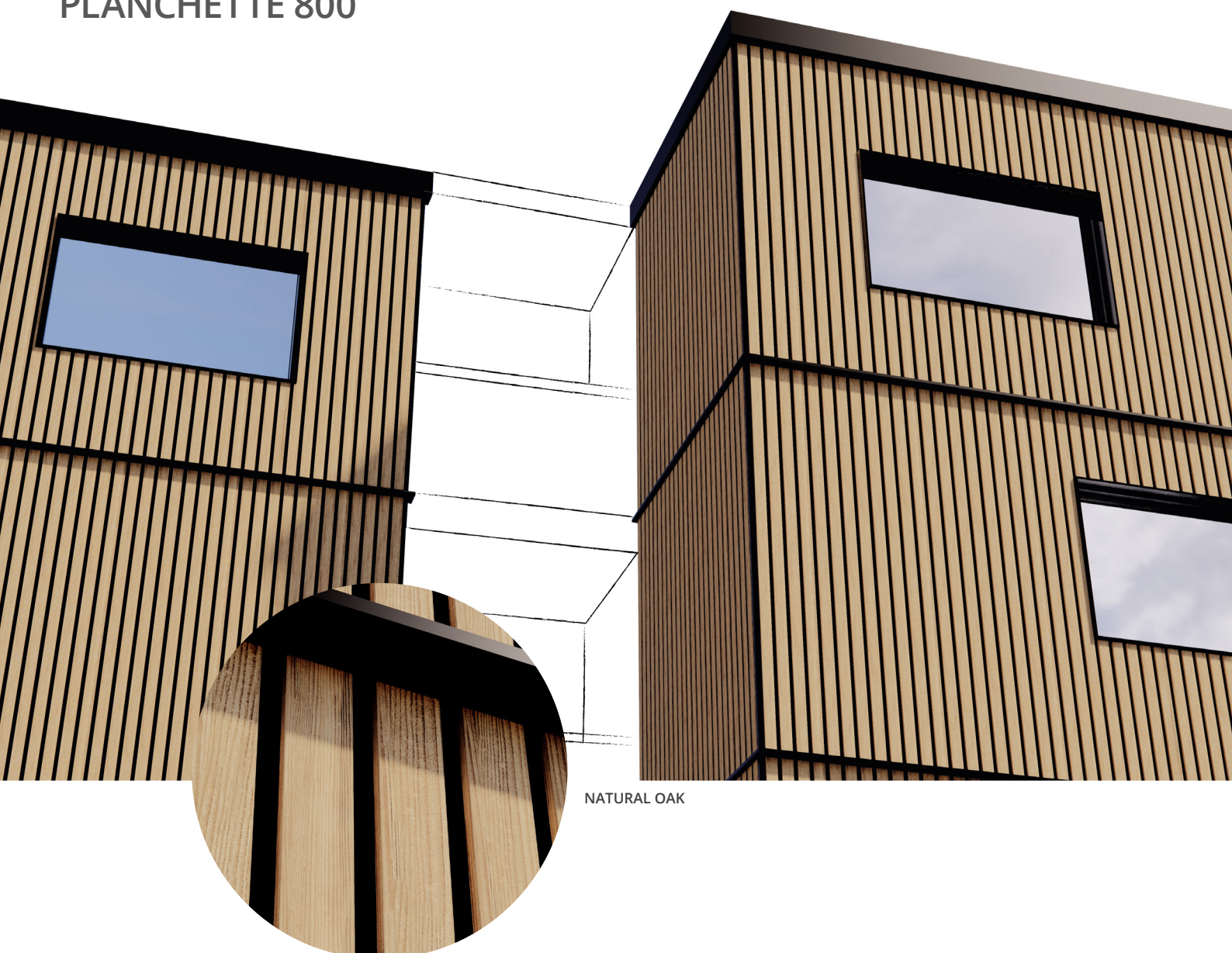
PLAIN WOOD

WITH BLACK STRIPS





## PLANCHETTE 800



NATURAL OAK

### PLANCHETTE 800® PROFILE

As comfortable outside as inside, PLANCHETTE 800® and its fine lath ribs offer a modern, aesthetically pleasing panelled appearance.

Material	Thickness (mm)	Weight (kg/m <sup>2</sup> )
Steel S280 GD + Z275	0.75	9.0

Effective width: 800 mm - Panel Length : 6000 mm maximum  
Vertical application only

Coating	Standard
Polyester 47μ	Coil coating EN 10169
Other coating	Upon request

REGISTERED  
PATENT  
AND DESIGNS

30-YEAR  
WARRANTY

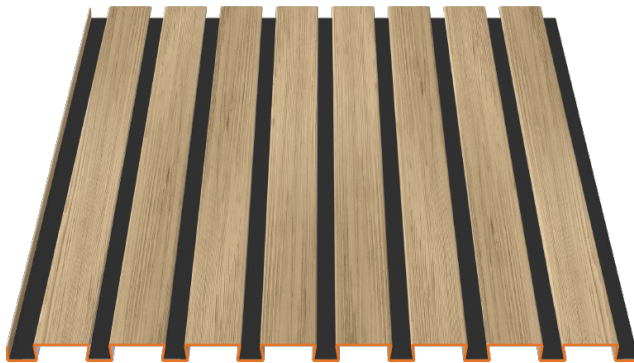
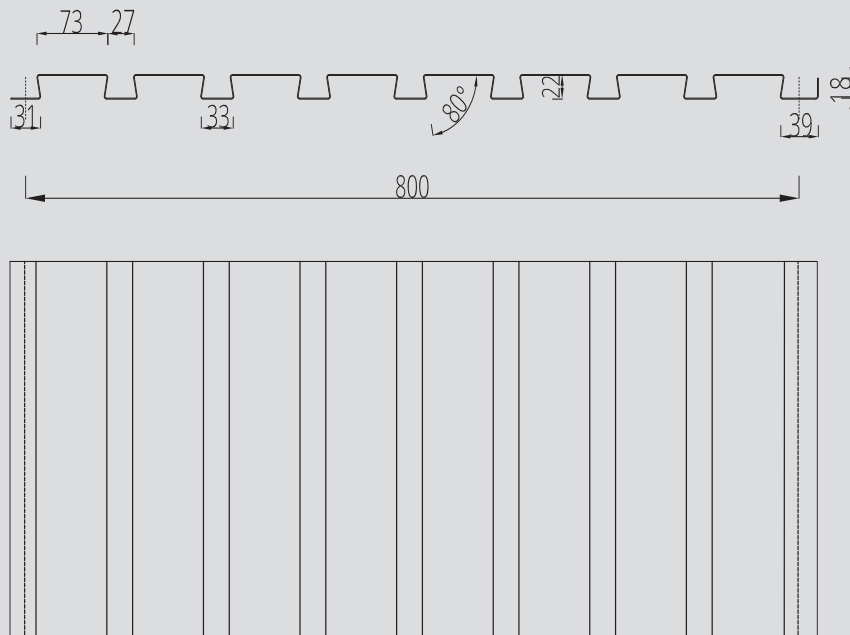
FIRE : A1  
IMPACT : Q4

TRADITIONAL  
INSTALLATION  
METHOD

MADE IN FRANCE

DWG, BIM,  
SKETCHUP FILES  
TO DOWNLOAD  
ON OUR WEBSITE

## PLANCHETTE 800



WITH BLACK STRIPS



PLAIN WOOD

### NATURAL OAK

PLAIN WOOD

WITH BLACK STRIPS



### HAZELNUT OAK

PLAIN WOOD

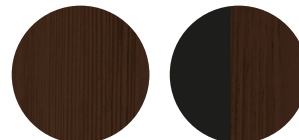
WITH BLACK STRIPS



### COFFEE OAK

PLAIN WOOD

WITH BLACK STRIPS



### SILVER TECK

PLAIN WOOD

WITH BLACK STRIPS





## PEIGNE 500



NATURAL OAK

### PEIGNE 500® PROFILE

With maximum depth between each of its fine ribs, Peigne 500® offers a tight and unique wooden slat effect.

Material	Thickness (mm)	Weight (kg/m²)
Steel S280 GD + Z275	0.63	12.07

Coating	Standard
Polyester 47μ	Coil coating EN 10169
Other coating	Upon request

Effective width: 500 mm - Panel Length : 6000 mm maximum  
Vertical application only

REGISTERED  
PATENT  
AND DESIGNS

30-YEAR  
WARRANTY

FIRE : A1  
IMPACT : Q4

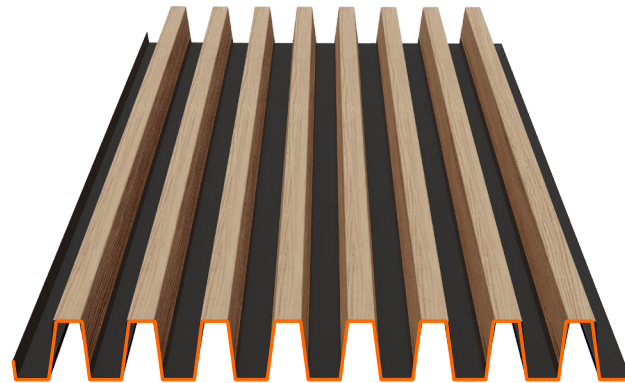
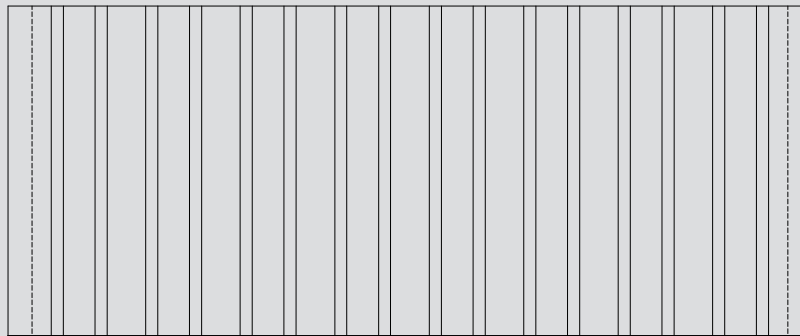
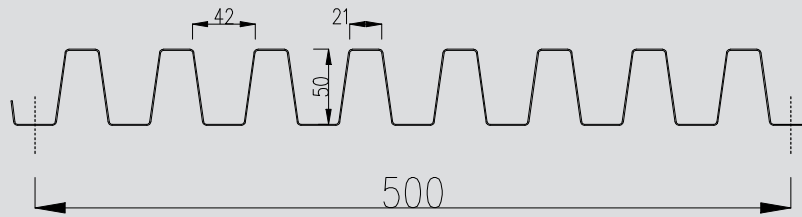
TRADITIONAL  
INSTALLATION  
METHOD

MADE IN FRANCE

DWG, BIM,  
SKETCHUP FILES  
TO DOWNLOAD  
ON OUR WEBSITE



## PEIGNE 500



WITH BLACK STRIPS

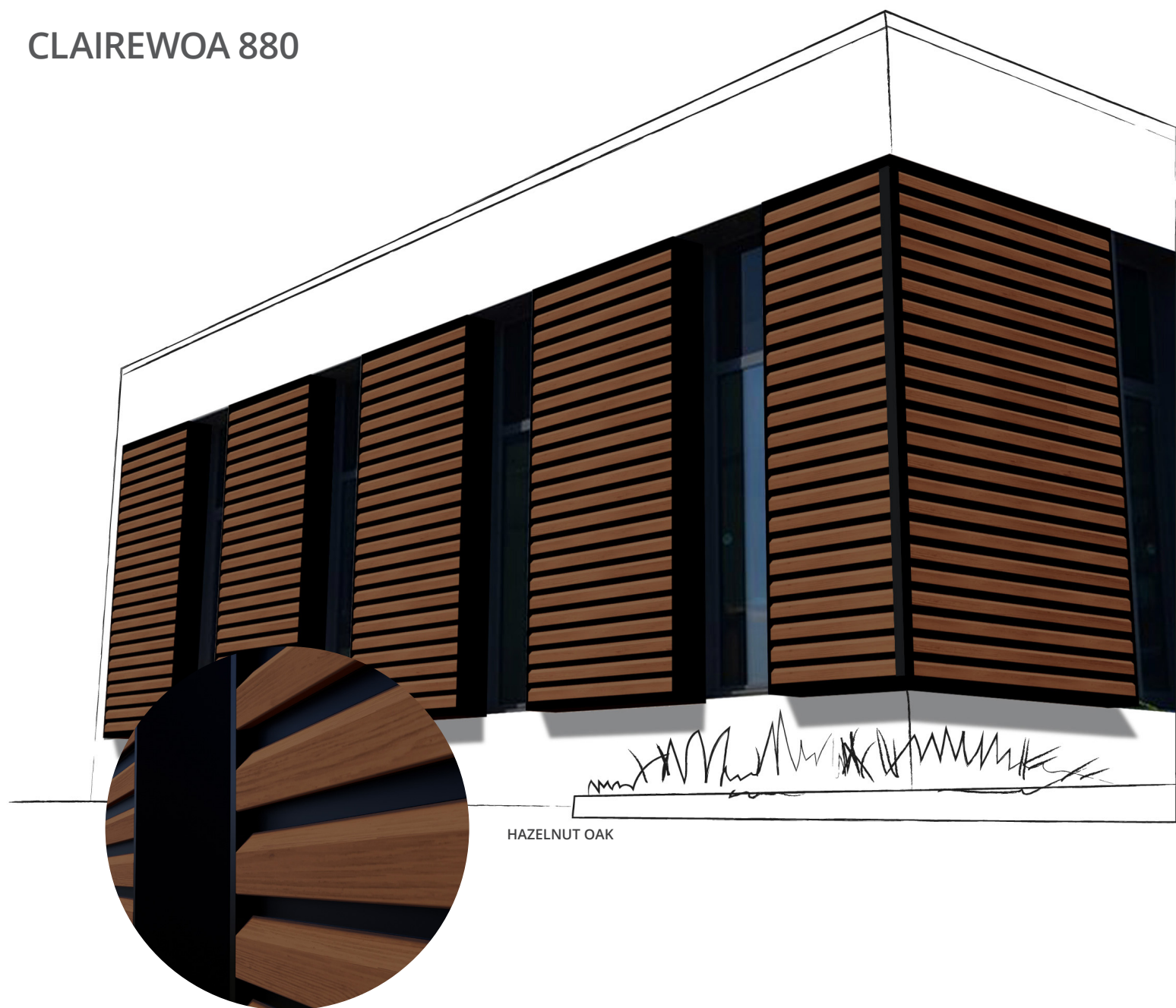
### NATURAL OAK

PLAIN WOOD

WITH BLACK STRIPS



## CLAIREWOA 880



HAZELNUT OAK

### CLAIREWOA 880® PROFILE

Naturally horizontal, CLAIREWOA 880® and its bevelled ribs play a clerestory layout.

Material	Thickness (mm)	Weight (kg/m²)
Steel S280 GD + Z275	0.75	8.2

Coating	Standard
Polyester 47μ	Coil coating EN 10169
Other coating	Upon request

Effective width : 880 mm - Panel Length : 6000 mm maximum  
Horizontal application

REGISTERED  
PATENT  
AND DESIGNS

30-YEAR  
WARRANTY

FIRE : A1  
IMPACT : Q4

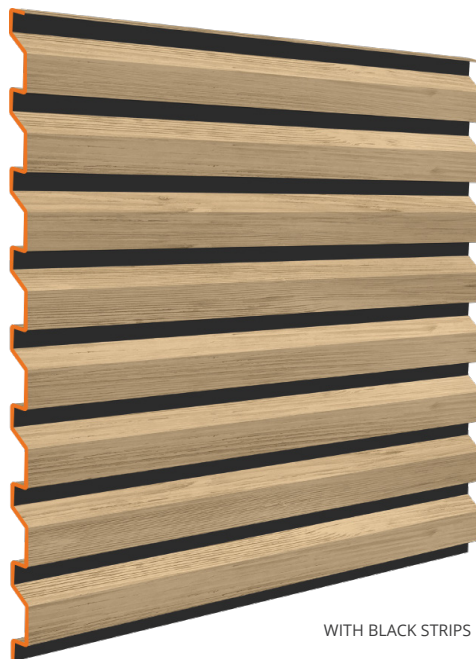
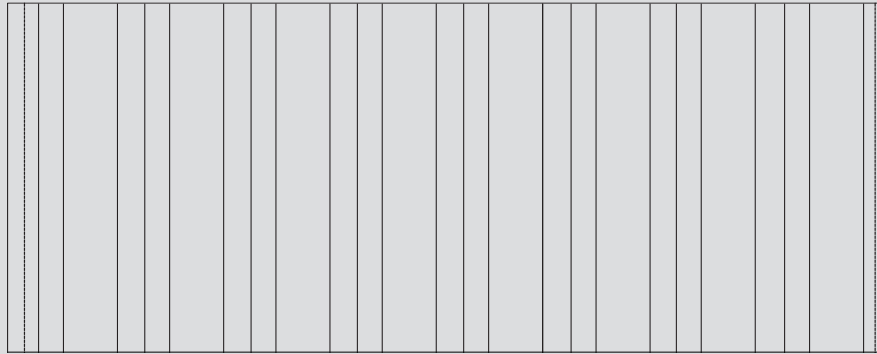
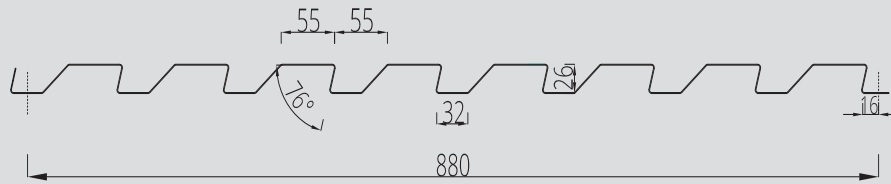
TRADITIONAL  
INSTALLATION  
METHOD

MADE IN FRANCE

DWG, BIM,  
SKETCHUP FILES  
TO DOWNLOAD  
ON OUR WEBSITE



## CLAIREWOA 880



WITH BLACK STRIPS



PLAIN WOOD

### NATURAL OAK

PLAIN WOOD



WITH BLACK STRIPS

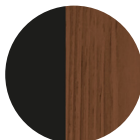


### HAZELNUT OAK

PLAIN WOOD



WITH BLACK STRIPS

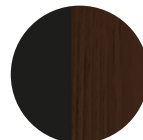


### COFFEE OAK

PLAIN WOOD

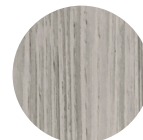


WITH BLACK STRIPS



### SILVER TECK

PLAIN WOOD



WITH BLACK STRIPS



## ALABAMA 1060



### ALABAMA 1060® PROFILE

With its wide plank-like decks, ALABAMA 1060® is inspired by the style of the traditional American home.

Material	Thickness (mm)	Weight (kg/m²)
Steel S280 GD + Z275	0.75	6.8

Effective width : 1060 mm - Panel Length : 6000 mm maximum  
Horizontal application

Coating	Standard
Polyester 47μ	Coil coating EN 10169
Other coating	Upon request

REGISTERED  
PATENT  
AND DESIGNS

30-YEAR  
WARRANTY

FIRE : A1  
IMPACT : Q4

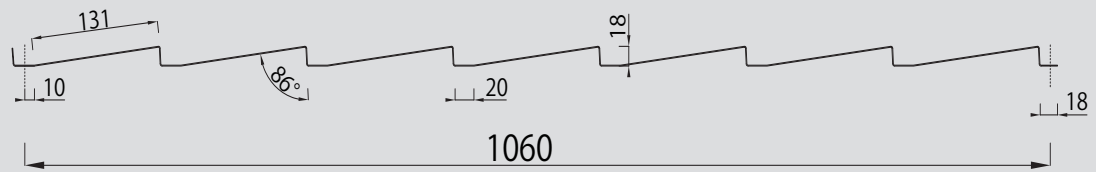
TRADITIONAL  
INSTALLATION  
METHOD

MADE IN FRANCE

DWG, BIM,  
SKETCHUP FILES  
TO DOWNLOAD  
ON OUR WEBSITE



## ALABAMA 1060



NATURAL OAK  
PLAIN WOOD



HAZELNUT OAK  
PLAIN WOOD



COFFEE OAK  
PLAIN WOOD



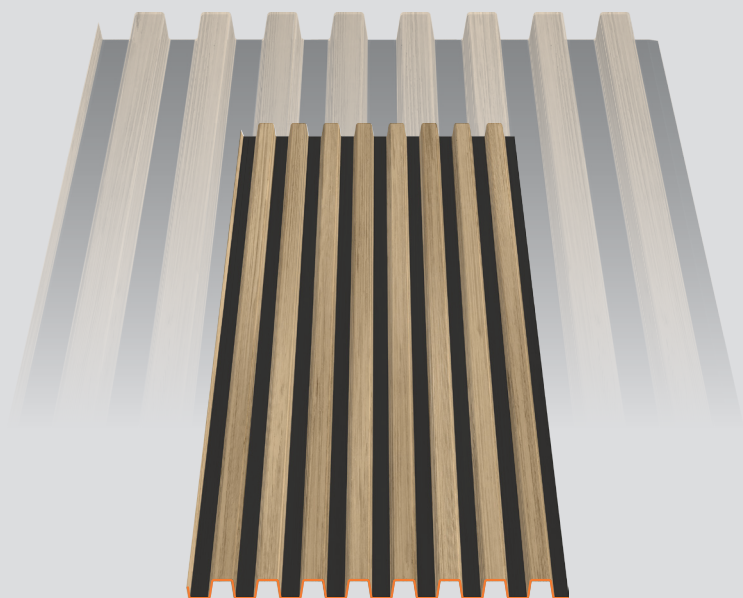
SILVER TECK  
PLAIN WOOD



## BARO MINI 360

# Toys

THE WORLD OF  AT **1/2** SCALE



## BARO MAXI 360 PROFILE

Material	Thickness (mm)	Weight (kg/m <sup>2</sup> )
Steel S280 GD + Z275	0.63	8.31

Coating	Standard
Polyester 47μ	Coil coating EN 10169
Other coating	Upon request

**Profile Height : 18 mm**

**Panel Length : 6000mm maximum**

REGISTERED  
PATENT  
AND DESIGNS

30-YEAR  
WARRANTY

FIRE : A1  
IMPACT : Q4

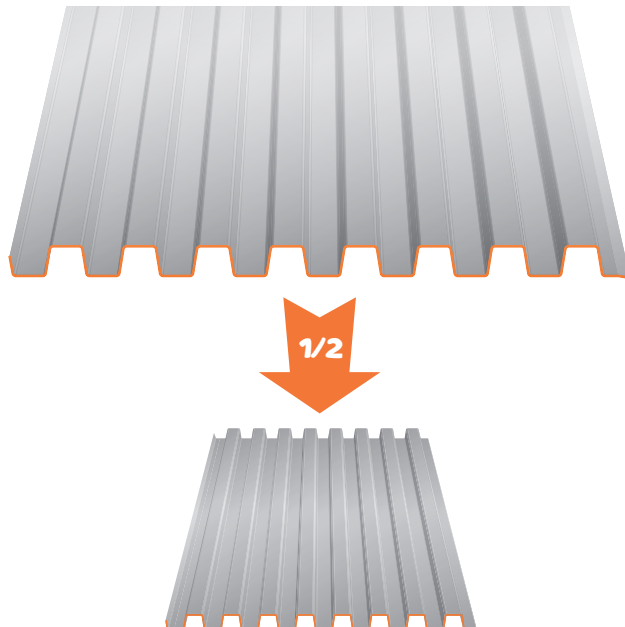
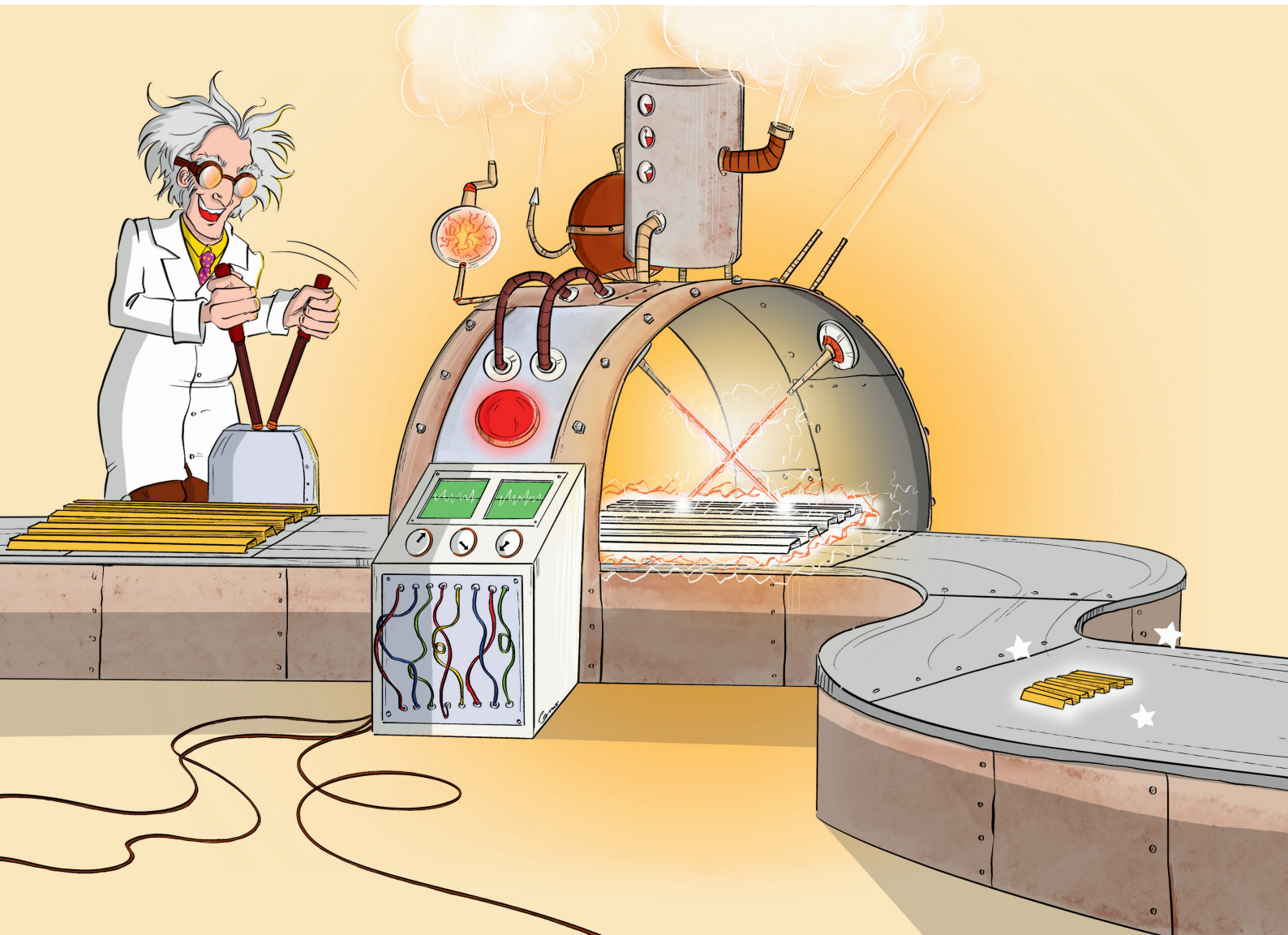
TRADITIONAL  
INSTALLATION  
METHOD

MADE IN FRANCE

DWG, BIM,  
SKETCHUP FILES  
TO DOWNLOAD  
ON OUR WEBSITE



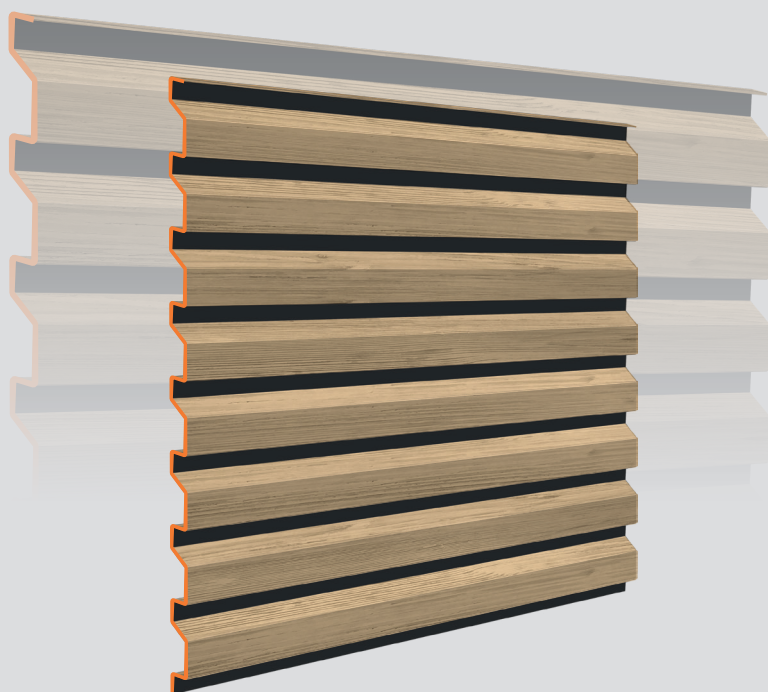
OUR ICONIC CLADDING SOLUTIONS  
IN OUR **Mini<sup>®</sup>** SIGNATURE



## CLAIREWOA **MINI** 440

# Toys

THE WORLD OF  AT **1/2** SCALE



## CLAIREWOA **MAXI** 440 PROFILE

Material	Thickness (mm)	Weight (kg/m <sup>2</sup> )
Steel S280 GD + Z275	0.63	6.80

Coating	Standard
Polyester 47μ	Coil coating EN 10169
Other coating	Upon request

**Profile Height :** : 14 mm

**Panel Length :** 6000mm maximum

REGISTERED  
PATENT  
AND DESIGNS

30-YEAR  
WARRANTY

FIRE : A1  
IMPACT : Q4

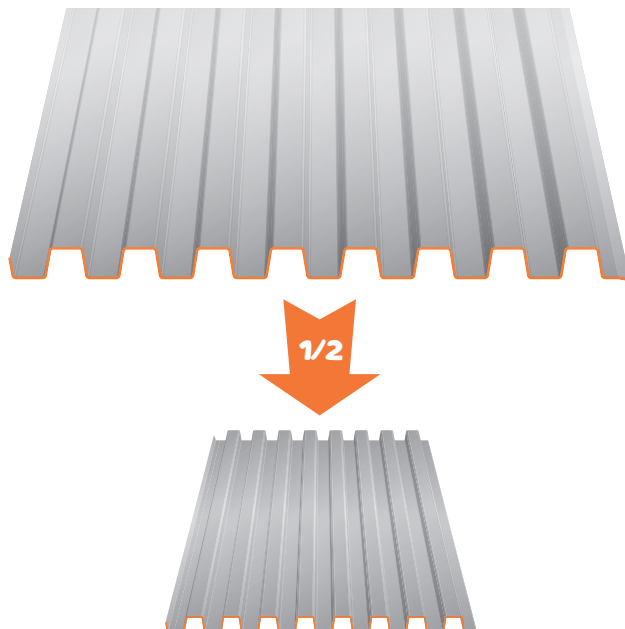
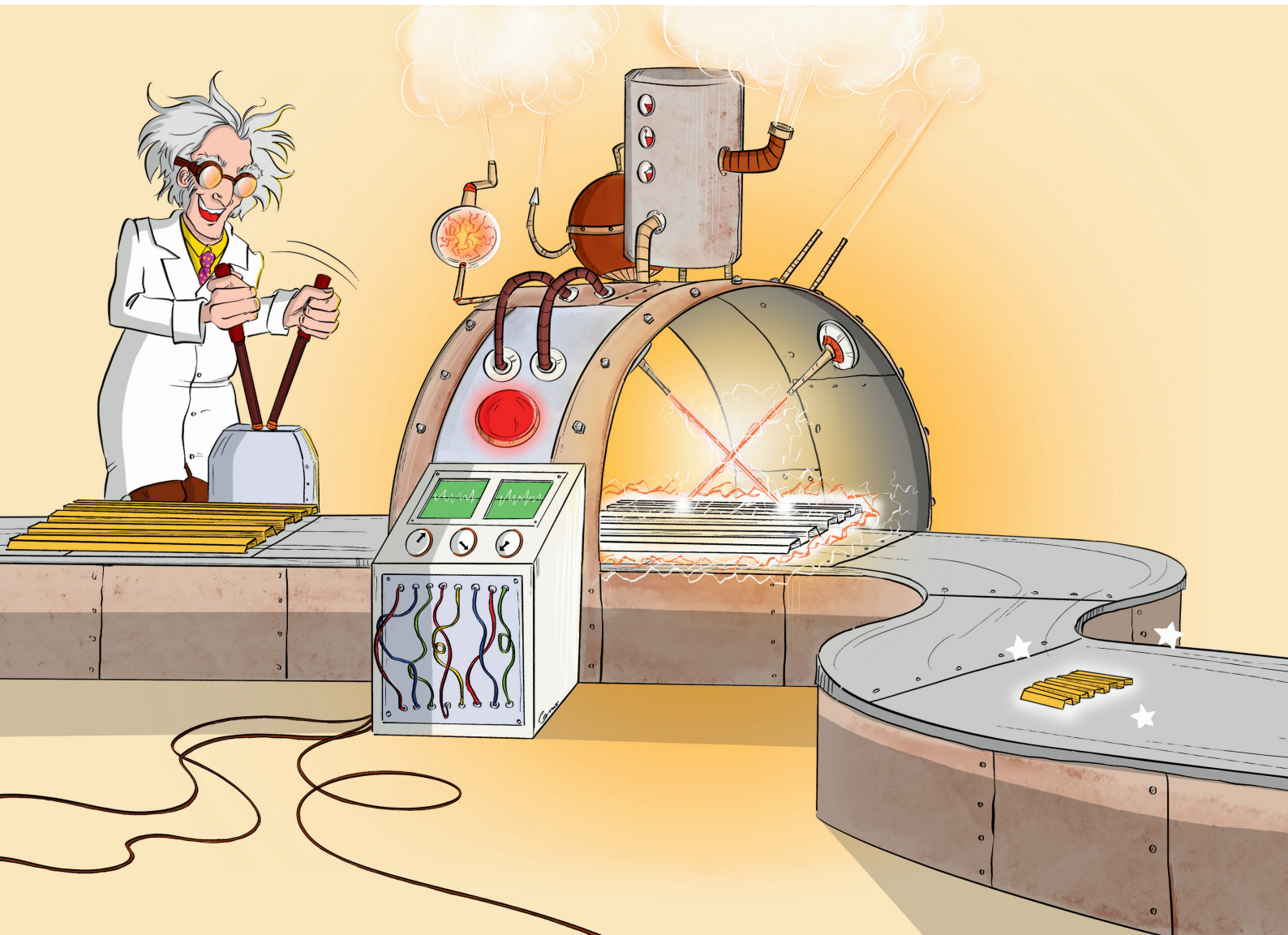
TRADITIONAL  
INSTALLATION  
METHOD

MADE IN FRANCE

DWG, BIM,  
SKETCHUP FILES  
TO DOWNLOAD  
ON OUR WEBSITE



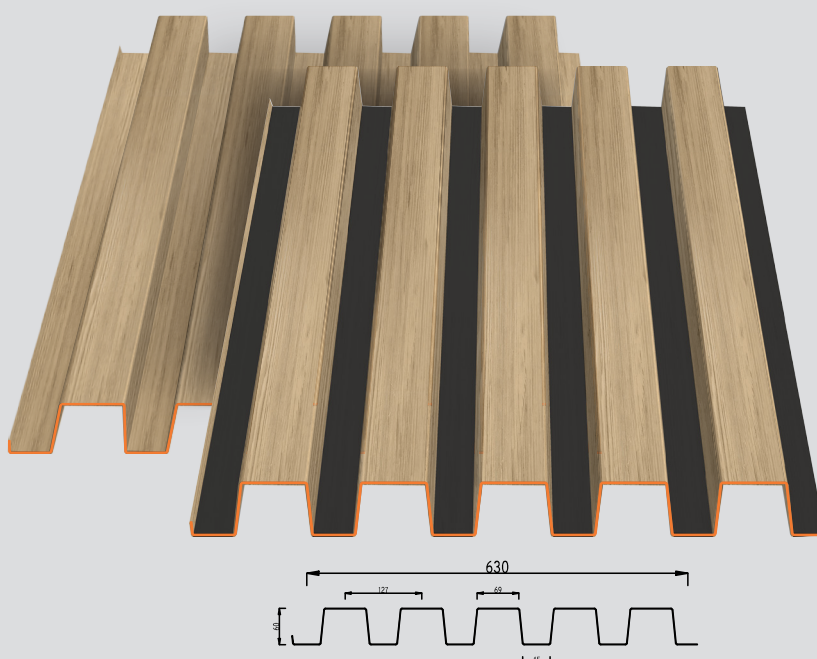
OUR ICONIC CLADDING SOLUTIONS  
IN OUR **Mini<sup>®</sup>** SIGNATURE



## BARO MAXI 630



**XXL VERSION** OF IMITATION WOOD FACADES



### BARO MAXI 630 PROFILE

Material	Thickness (mm)	Weight (kg/m <sup>2</sup> )
Steel S280 GD + Z275	0.75	11.40

Coating	Standard
Polyester 47μ	Coil coating EN 10169
Other coating	Upon request

**Profile Height: 60 mm**

**Panel Length :** 6000mm maximum

REGISTERED  
PATENT  
AND DESIGNS

30-YEAR  
WARRANTY

FIRE : A1  
IMPACT : Q4

TRADITIONAL  
INSTALLATION  
METHOD

MADE IN FRANCE

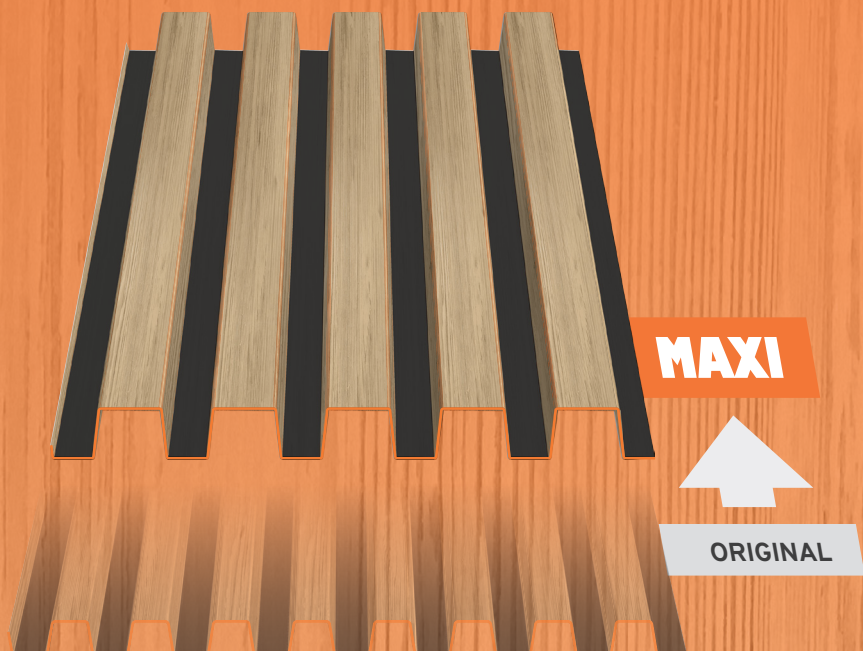
DWG, BIM,  
SKETCHUP FILES  
TO DOWNLOAD  
ON OUR WEBSITE



# THE COLLECTION THAT THINKS BIG

The success of the ONWOOD range also extends to large-scale projects. The MAXI collection provides balanced proportions and a consistent scale on tall, long facades.

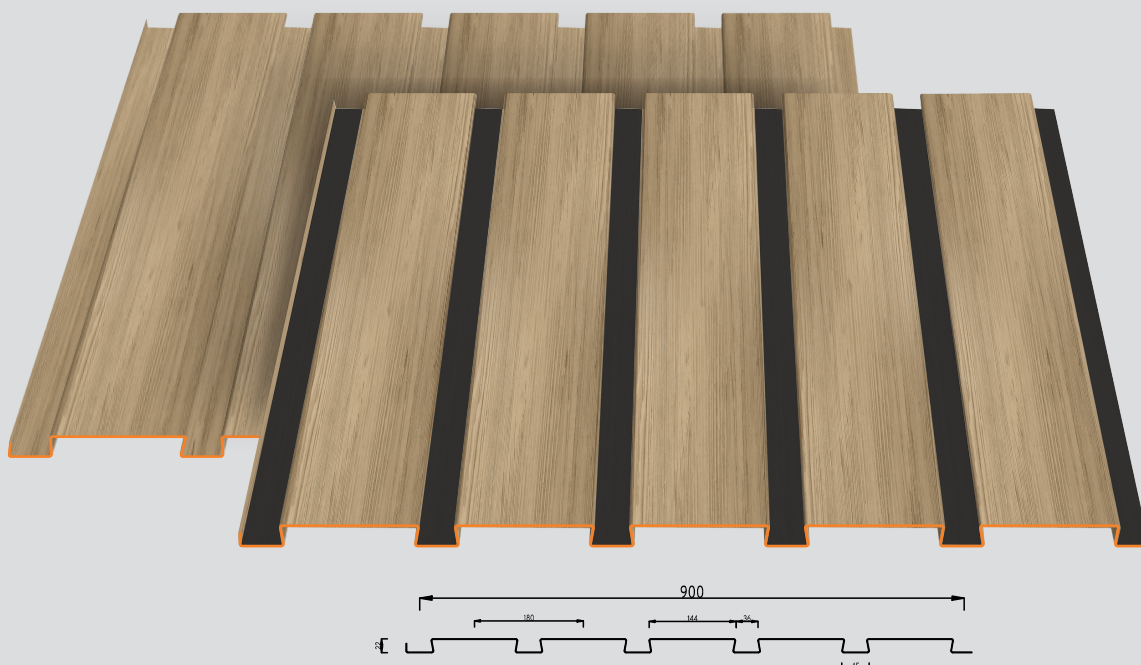
Mix and match with twin models of different sizes for stunning graphic effects.



## PLANCHE **MAXI** 900



**XXL VERSION** OF IMITATION WOOD FACADES



### PLANCHE **MAXI** 900 PROFILE

Material	Thickness (mm)	Weight (kg/m <sup>2</sup> )
Steel S280 GD + Z275	0.75	7.98

Coating	Standard
Polyester 47μ	Coil coating EN 10169
Other coating	Upon request

**Profile Height: 22 mm**

**Panel Length :** 6000mm maximum

REGISTERED  
PATENT  
AND DESIGNS

30-YEAR  
WARRANTY

FIRE : A1  
IMPACT : Q4

TRADITIONAL  
INSTALLATION  
METHOD

MADE IN FRANCE

DWG, BIM,  
SKETCHUP FILES  
TO DOWNLOAD  
ON OUR WEBSITE

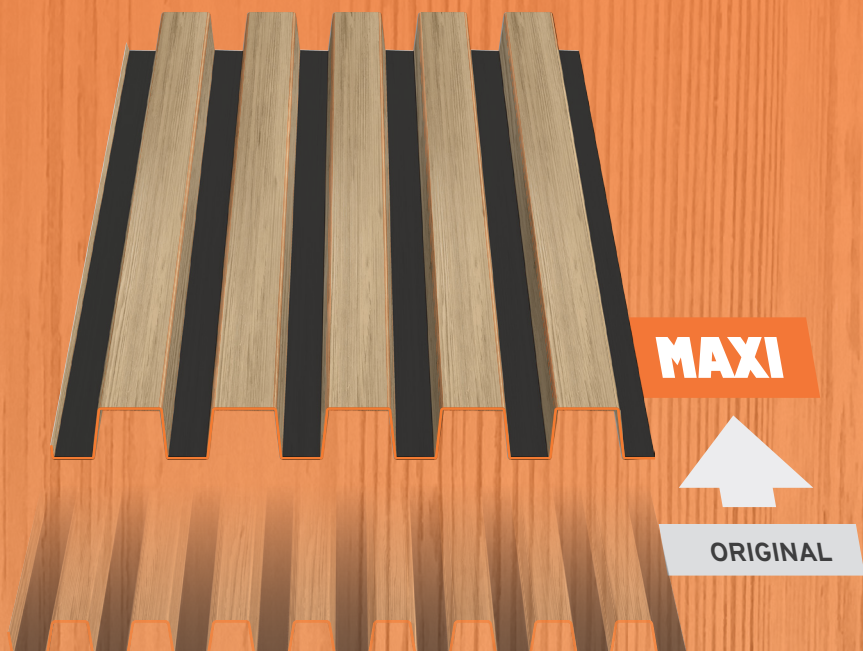




# THE COLLECTION THAT THINKS BIG

The success of the ONWOOD range also extends to large-scale projects. The MAXI collection provides balanced proportions and a consistent scale on tall, long facades.

Mix and match with twin models of different sizes for stunning graphic effects.



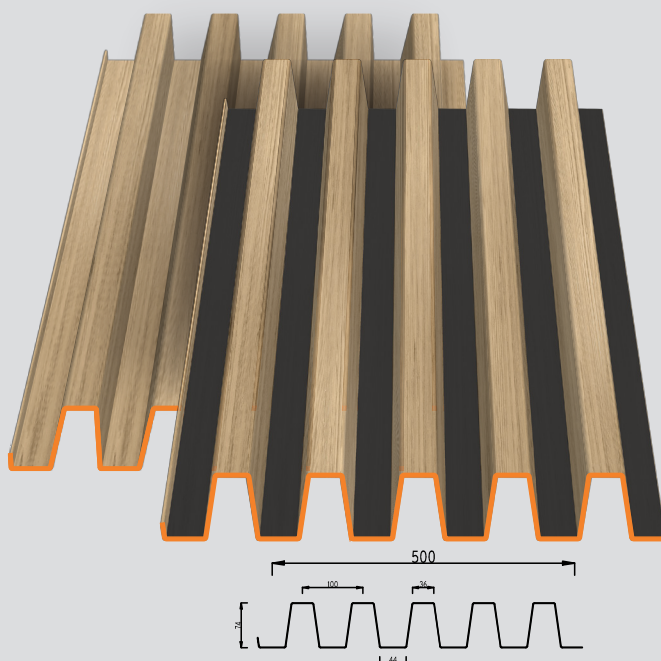
**MAXI**

**ORIGINAL**

## PEIGNE MAXI 500



**XXL VERSION** OF IMITATION WOOD FACADES



### PEIGNE MAXI 500 PROFILE

Material	Thickness (mm)	Weight (kg/m <sup>2</sup> )
Steel S280 GD + Z275	0.75	14.37

Coating	Standard
Polyester 47μ	Coil coating EN 10169
Other coating	Upon request

**Profile Height: 74 mm**

**Panel Length :** 6000mm maximum

REGISTERED  
PATENT  
AND DESIGNS

30-YEAR  
WARRANTY

FIRE : A1  
IMPACT : Q4

TRADITIONAL  
INSTALLATION  
METHOD

MADE IN FRANCE

DWG, BIM,  
SKETCHUP FILES  
TO DOWNLOAD  
ON OUR WEBSITE

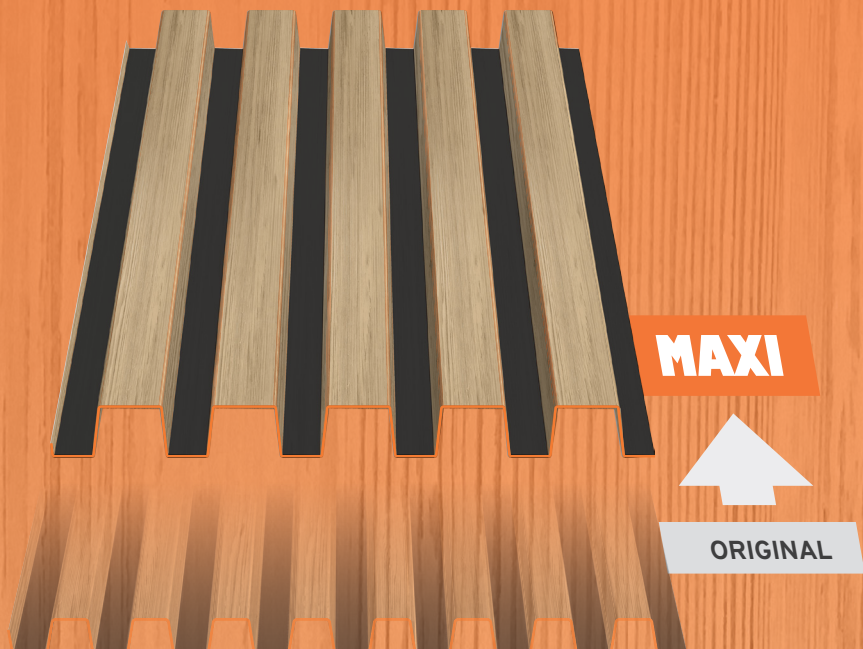




# THE COLLECTION THAT THINKS BIG

The success of the ONWOOD range also extends to large-scale projects. The MAXI collection provides balanced proportions and a consistent scale on tall, long facades.

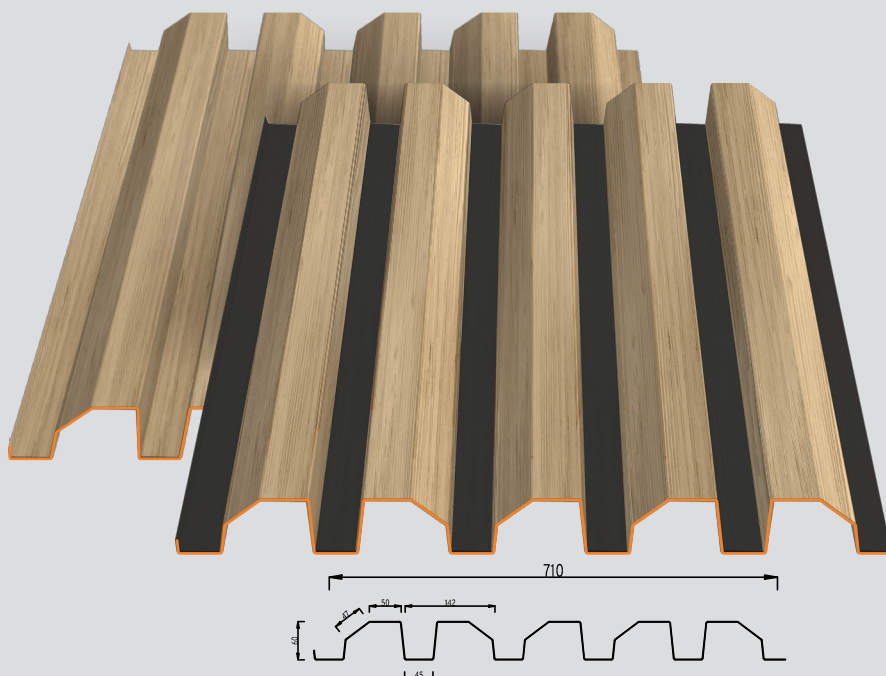
Mix and match with twin models of different sizes for stunning graphic effects.



## CHANFREIN MAXI 710



XXL VERSION OF IMITATION WOOD FACADES



### CHANFREIN MAXI 710 PROFILE

Material	Thickness (mm)	Weight (kg/m <sup>2</sup> )
Steel S280 GD + Z275	0.75	10.12

Coating	Standard
Polyester 47μ	Coil coating EN 10169
Other coating	Upon request

**Profile Height: 60 mm**

**Panel Length :** 6000mm maximum

REGISTERED  
PATENT  
AND DESIGNS

30-YEAR  
WARRANTY

FIRE : A1  
IMPACT : Q4

TRADITIONAL  
INSTALLATION  
METHOD

MADE IN FRANCE

DWG, BIM,  
SKETCHUP FILES  
TO DOWNLOAD  
ON OUR WEBSITE

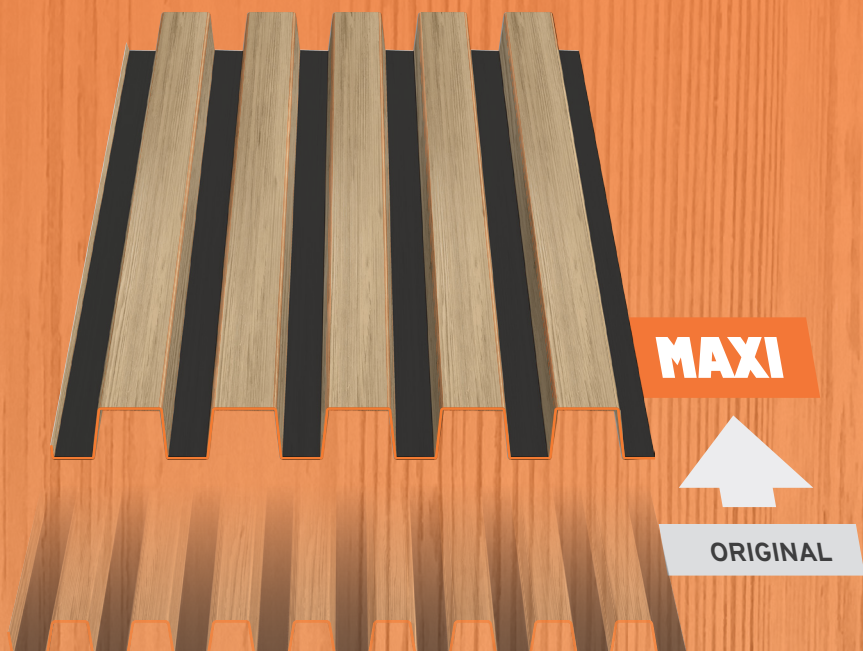




## THE COLLECTION THAT THINKS BIG

The success of the ONWOOD range also extends to large-scale projects. The MAXI collection provides balanced proportions and a consistent scale on tall, long facades.

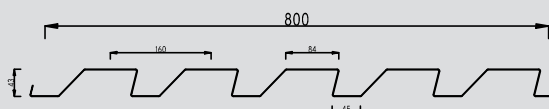
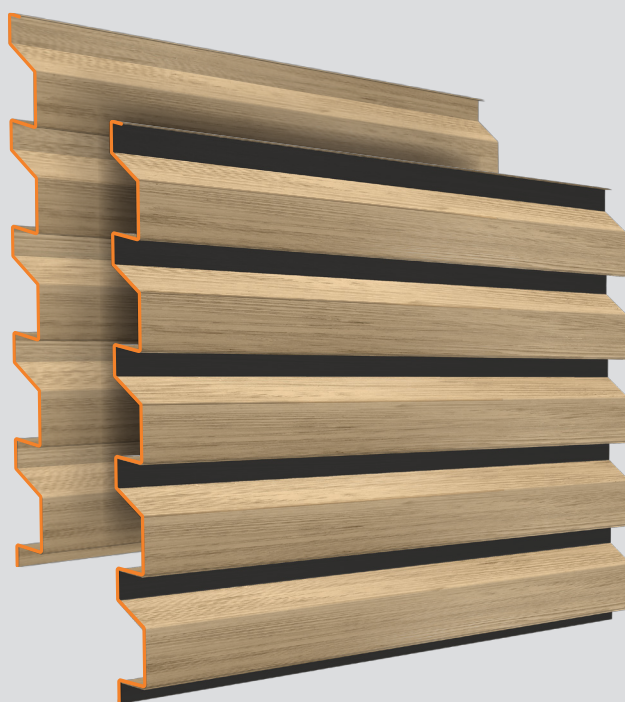
Mix and match with twin models of different sizes for stunning graphic effects.



## CLAIREWOA MAXI 800



XXL VERSION OF IMITATION  
WOOD FACADES



### CLAIREWOA MAXI 800 PROFILE

Material	Thickness (mm)	Weight (kg/m <sup>2</sup> )
Steel S280 GD + Z275	0.75	8.98

Coating	Standard
Polyester 47μ	Coil coating EN 10169
Other coating	Upon request

**Profile Height: 43 mm**

**Panel Length :** 6000mm maximum

REGISTERED  
PATENT  
AND DESIGNS

30-YEAR  
WARRANTY

FIRE : A1  
IMPACT : Q4

TRADITIONAL  
INSTALLATION  
METHOD

MADE IN FRANCE

DWG, BIM,  
SKETCHUP FILES  
TO DOWNLOAD  
ON OUR WEBSITE

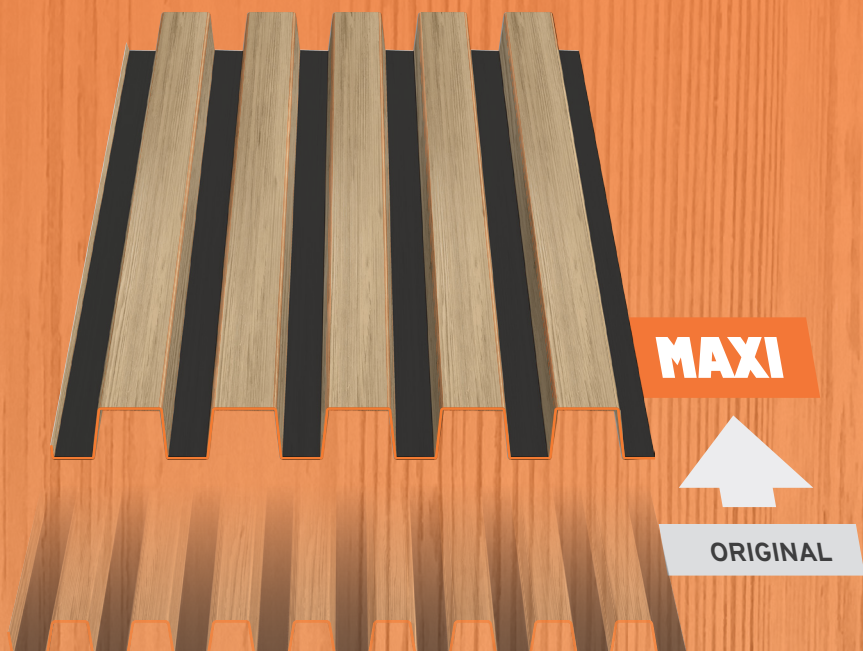




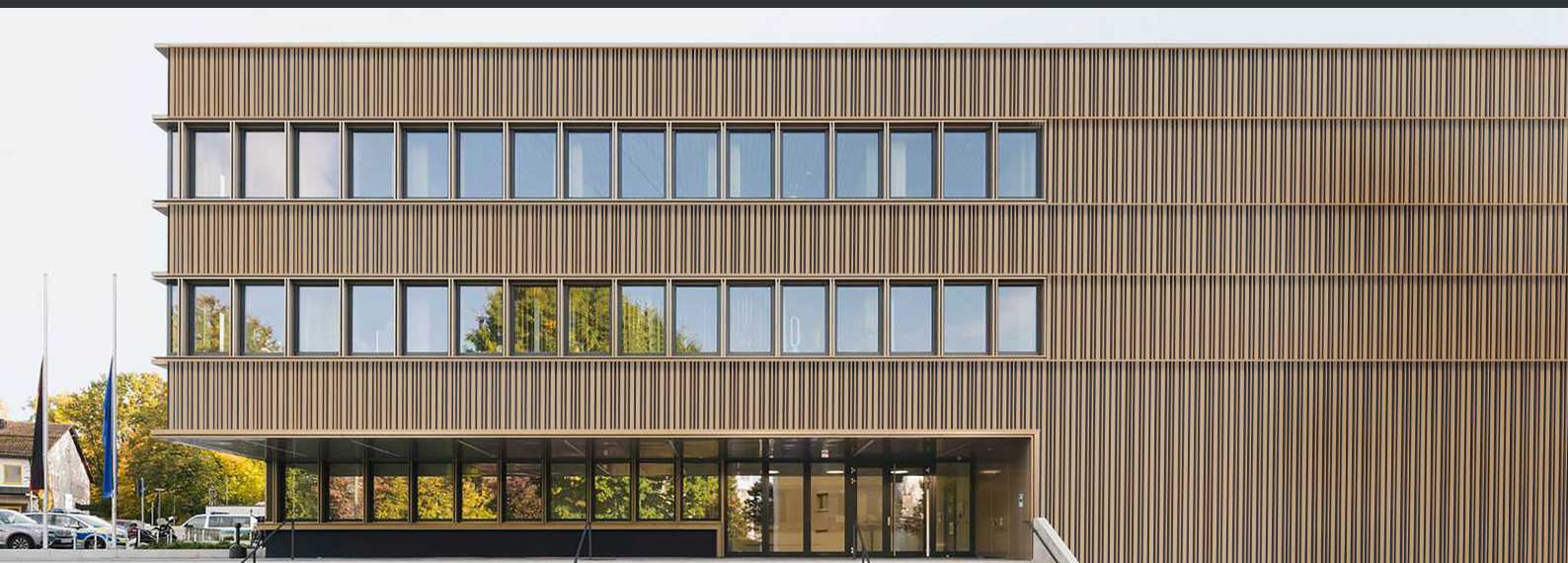
## THE COLLECTION THAT THINKS BIG

The success of the ONWOOD range also extends to large-scale projects. The MAXI collection provides balanced proportions and a consistent scale on tall, long facades.

Mix and match with twin models of different sizes for stunning graphic effects.







## BUCHETTE®

PLAY THE CONSTRUCTION GAME WITH **OnWood**

Embedded in the very DNA of Ateliers 3S modular ranges, the new BUCHETTE® collection offers 3 new models with wood optics design that alternates flat and standing ribs.

Give your wood-alike facades a rhythmic touch, harking back to childhood days spent playing construction games with wood strips.

A brand new collection that plays on random designs to break up the monotony of extra-long facades.

REGISTERED  
PATENT  
AND DESIGNS

30-YEAR  
WARRANTY

FIRE : A1  
IMPACT : Q4

TRADITIONAL  
INSTALLATION  
METHOD

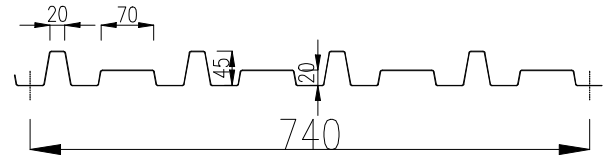
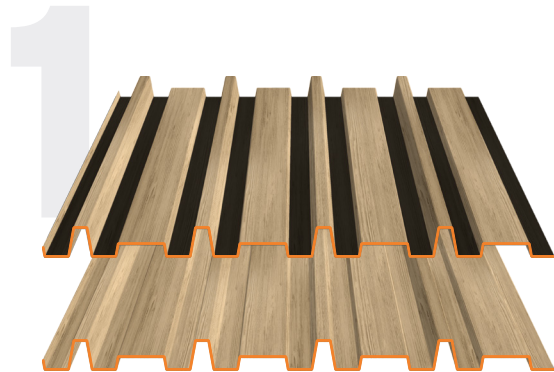
MADE IN FRANCE

DWG, BIM,  
SKETCHUP FILES  
TO DOWNLOAD  
ON OUR WEBSITE





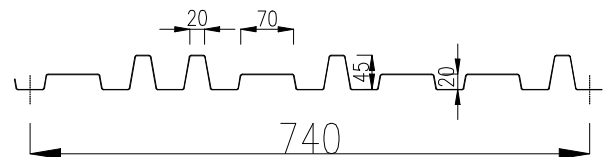
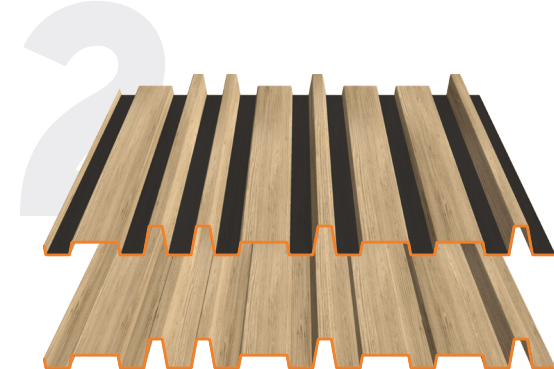
ONWOOD **BÛCHETTE B1®** [740]



Coating	Standard
Polyester 47μ	Coil coating EN 10169
Other coating	Upon request

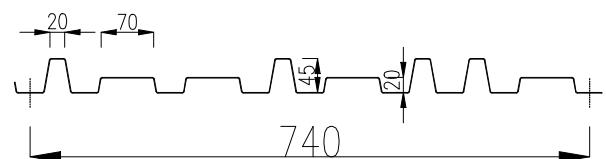
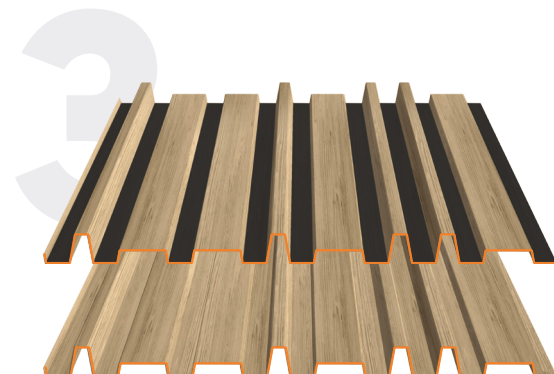
Material	Thickness (mm)	Weight (kg/m <sup>2</sup> )
Steel S280 GD + Z275	0.75	9.7

ONWOOD **BÛCHETTE B2®** [740]



Material	Thickness (mm)	Weight (kg/m <sup>2</sup> )
Steel S280 GD + Z275	0.75	9.7

ONWOOD **BÛCHETTE B3®** [740]



Material	Thickness (mm)	Weight (kg/m <sup>2</sup> )
Steel S280 GD + Z275	0.75	9.7

Effective width : 740 mm - Panel Length : 6000 mm maximum  
Vertical or horizontal application





## THE SOUL OF LAP-JOINT CLADDING

Whether it comes from Scandinavia or from alpine pastures, for Ateliers3S it is above all inspired by sea spray and seaside cabins.

Our new ONWOOD series «THE LANDAISE» with lap-joint design evokes the soul of the coasts. From the Arcachon Basin to the Isle of Ré, and now extending to your home wherever you may be, THE LANDAISE designs your steel facades with what wood cladding evokes most traditionally.

Available in all our wood-looking finishes, the LANDAISE series is enhanced by the new SILVER TEAK colour, offering your facades the salty charm of wood weathered by wind and light. Always maintenance-free and guaranteed for 30 years.

REGISTERED  
PATENT  
AND DESIGNS

30-YEAR  
WARRANTY

FIRE : A1  
IMPACT : Q4

TRADITIONAL  
INSTALLATION  
METHOD

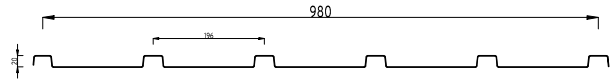
MADE IN FRANCE

DWG, BIM,  
SKETCHUP FILES  
TO DOWNLOAD  
ON OUR WEBSITE





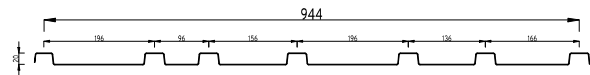
ONWOOD **LANDAISE L1®** [980]  
regular lap-joint design



Coating	Standard
Polyester 47μ	Coil coating EN 10169
Other coating	Upon request

Material	Thickness (mm)	Weight (kg/m²)
Steel S280 GD + Z275	0.75	7.33

ONWOOD **LANDAISE L2®** [944]  
random lap-joint design



Material	Thickness (mm)	Weight (kg/m²)
Steel S280 GD + Z275	0.75	7.61

Panel Length : 8000 mm maximum  
Vertical or horizontal application

NATURAL OAK  
PLAIN WOOD



HAZELNUT OAK  
PLAIN WOOD



COFFEE OAK  
PLAIN WOOD



SILVER TECK  
PLAIN WOOD



Fix the panels with precision, respect the rhythm of the ribs and coexist in the overall vision, the mission of the screws of the LANDAISE series is essential.

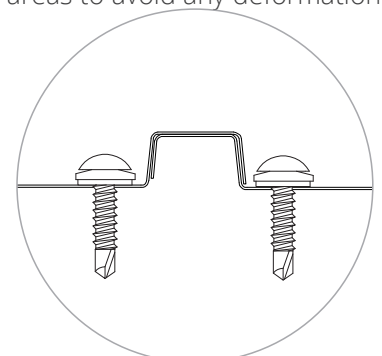
ATELIERS 3S offers you, for each panel model, a technical optimization with minimal aesthetic impact. By placing the screws as close as possible to the ribs, they are concealed by the shadow of the wave and are more discreet. They also benefit from their rigidity.

Particular attention must be paid to the tightening torque of screws located in flat areas to avoid any deformation of the facing.

ONWOOD **LANDAISE L1®** [980]



ONWOOD **LANDAISE L2®** [944]

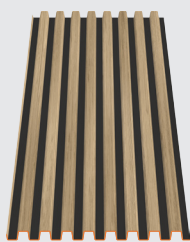


Overlapping detail

# RANGE PANORAMA

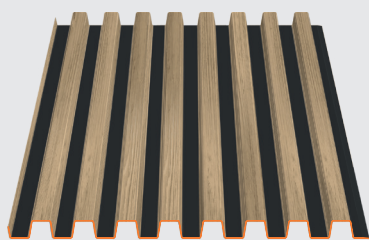


MINI

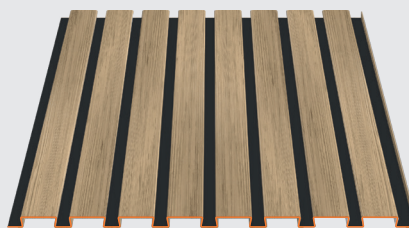


ONWOOD BARO **Mini** 360

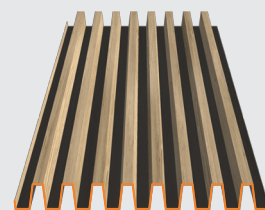
ORIGINAL



ONWOOD BARO 710



ONWOOD PLANCHETTE 800

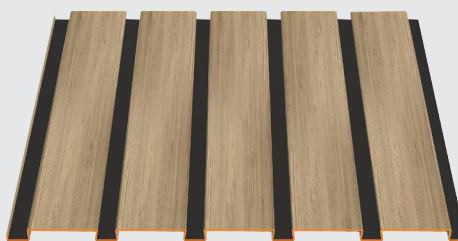


ONWOOD PEIGNE 500

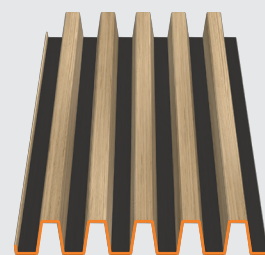
MAXI



ONWOOD BARO **MAXI** 630



ONWOOD PLANCHE **MAXI** 900



ONWOOD PEIGNE **MAXI** 500



## SERIES



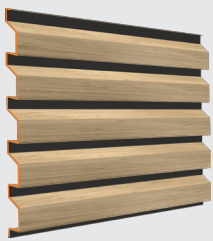
ONWOOD CLAIREWOA **Mini** 440



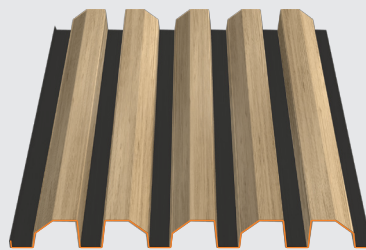
ONWOOD CLAIREWOA 880



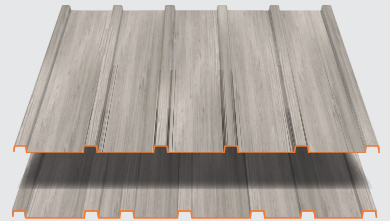
ONWOOD ALABAMA 1060



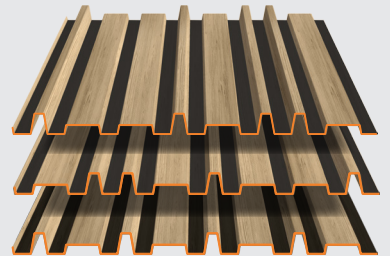
ONWOOD CLAIREWOA **MAXI** 800



ONWOOD CHANFREIN **MAXI** 710



ONWOOD LANDAISE



ONWOOD BUCHETTE

**BUCHETTE®**





# SPAN TABLES

### BARO 710® LOAD CAPACITIES

SPAN TABLES IN DAN/M², ACCORDING TO WIND LOAD

Limit deflection criterion taken into account: 1/150th according to French professional recommendations (RAGE) under wind load calculated as per EN EN 1991-1-4

PRESSURE		Span (m)	SUCTION	
2 supports	3 supports		2 supports	3 supports
0.75	0.75		0.75	0.75
1790	1206	<b>1,00</b>	1789	1206
1243	914	<b>1,20</b>	1242	914
913	718	<b>1,40</b>	913	718
672	580	<b>1,60</b>	675	580
474	479	<b>1,80</b>	476	479
346	402	<b>2,00</b>	348	402
261	343	<b>2,20</b>	262	343
201	296	<b>2,40</b>	202	296
159	258	<b>2,60</b>	159	258
127	227	<b>2,80</b>	128	227
104	199	<b>3,00</b>	104	199



Calculation according to Eurocode III Part 1.3 (EN-1993)

Seismic validation: CSTB DCC/CLC\_12\_229\_1 study report

Profiles Maximal Length : **13000 mm**

The ONWOOD range metal sheets are non-structural sheets according to standard EN EN 14782:2006, as per RAGE Professional Recommendations for Cladding of July 2014, not intended to receive PPE anchoring devices according to EN 795 standard or lifelines.





## PLANCHETTE 800® LOAD CAPACITIES

SPAN TABLES IN DAN/M², ACCORDING TO WIND LOAD

Limit deflection criterion taken into account: 1/150th according to French professional recommendations (RAGE) under wind load calculated as per EN EN 1991-1-4

PRESSURE		Span (m)	SUCTION	
2 supports	3 supports		2 supports	3 supports
0.75	0.75		0.75	0.75
579	579	<b>1.00</b>	618	309
483	483	<b>1.20</b>	515	257
414	414	<b>1.40</b>	365	221
322	362	<b>1.60</b>	245	193
226	322	<b>1.80</b>	172	172
165	290	<b>2.00</b>	125	154
124	263	<b>2.20</b>	94	140
95	208	<b>2.40</b>	72	129
75	164	<b>2.60</b>	57	119
60	131	<b>2.80</b>	46	110
49	107	<b>3.00</b>	37	92

A table calculated according to NV 65 rules is available upon simple request

Test report n°11901887-001-1



Test performed according to norm EN P 34-503-1 and interpretation according to interpretation as per Annexes E and N of the RAGE French professional recommendations

Seismic validation: CSTB DCC/CLC\_12\_229\_1 study report

Profiles Maximal Length : **6000 mm**

The ONWOOD range metal sheets are non-structural sheets according to standard EN EN 14782:2006, as per RAGE Professional Recommendations for Cladding of July 2014, not intended to receive PPE anchoring devices according to EN 795 standard or lifelines.



## PEIGNE 500® LOAD CAPACITIES

SPAN TABLES IN DAN/M², ACCORDING TO WIND LOAD

Limit deflection criterion taken into account: 1/150th according to French professional recommendations (RAGE) under wind load calculated as per EN EN 1991-1-4

PRESSURE		Span (m)	SUCTION	
2 supports	3 supports		2 supports	3 supports
0.63	0.63	m	0.63	0.63
2426	1541	<b>1.00</b>	2426	1512
1840	1187	<b>1.20</b>	1925	1162
1352	945	<b>1.40</b>	1415	924
1035	772	<b>1.60</b>	1083	754
818	644	<b>1.80</b>	856	628
627	546	<b>2.00</b>	627	531
471	469	<b>2.20</b>	471	456
363	407	<b>2.40</b>	363	396
285	357	<b>2.60</b>	285	347
228	316	<b>2.80</b>	229	307



Calculation according to Eurocode III Part 1.3 (EN-1993)

Seismic validation: CSTB DCC/CLC\_12\_229\_1 study report

Profiles Maximal Length : 6000mm

The ONWOOD range metal sheets are non-structural sheets according to standard EN EN 14782:2006, as per RAGE Professional Recommendations for Cladding of July 2014, not intended to receive PPE anchoring devices according to EN 795 standard or lifelines.





**CLAIREWOA 880® LOAD CAPACITIES**

SPAN TABLES IN DAN/M², ACCORDING TO WIND LOAD

Limit deflection criterion taken into account: 1/150th according to French professional recommendations (RAGE) under wind load calculated as per EN EN 1991-1-4

PRESSURE		Span (m)	SUCTION	
2 supports	3 supports		2 supports	3 supports
0.75	0.75		0.75	0.75
555	555	<b>1.00</b>	657	328
462	462	<b>1.20</b>	547	274
396	396	<b>1.40</b>	444	234
270	347	<b>1.60</b>	298	205
189	308	<b>1.80</b>	209	182
138	277	<b>2.00</b>	152	164
104	252	<b>2.20</b>	114	149
80	199	<b>2.40</b>	88	137
63	156	<b>2.60</b>	69	126
50	125	<b>2.80</b>	56	115
41	102	<b>3.00</b>	45	94

A table calculated according to NV 65 rules is available upon simple request

Test report n°11901886-001-1



Test performed according to norm EN P 34-503-1 and interpretation according to interpretation as per Annexes E and N of the RAGE French professional recommendations

Seismic validation: CSTB DCC/CLC\_12\_229\_1 study report

Profiles Maximal Length : 6000mm

The ONWOOD range metal sheets are non-structural sheets according to standard EN EN 14782:2006, as per RAGE Professional Recommendations for Cladding of July 2014, not intended to receive PPE anchoring devices according to EN 795 standard or lifelines.



## ALABAMA 1060® LOAD CAPACITIES

SPAN TABLES IN DAN/M<sup>2</sup>, ACCORDING TO WIND LOAD

Limit deflection criterion taken into account: 1/150th according to French professional recommendations (RAGE) under wind load calculated as per EN EN 1991-1-4

PRESSURE		Span (m)	SUCTION	
2 supports	3 supports		2 supports	3 supports
0.75	0.75		0.75	0.75
352	352	<b>1.00</b>	356	254
267	293	<b>1.20</b>	206	212
172	248	<b>1.40</b>	130	181
115	190	<b>1.60</b>	87	159
81	139	<b>1.80</b>	61	116
59	102	<b>2.00</b>	45	84
44	76	<b>2.20</b>	33	63
34	59	<b>2.40</b>	26	49
27	46	<b>2.60</b>	20	38
22	37	<b>2.80</b>	16	31
17	30	<b>3.00</b>	13	25

A table calculated according to NV 65 rules is available upon simple request

Test report n°11901888-001-1



Test performed according to norm EN P 34-503-1 and interpretation according to interpretation as per Annexes E and N of the RAGE French professional recommendations

Seismic validation: CSTB DCC/CLC\_12\_229\_1 study report

Profiles Maximal Length : **6000 mm**

The ONWOOD range metal sheets are non-structural sheets according to standard EN EN 14782:2006, as per RAGE Professional Recommendations for Cladding of July 2014, not intended to receive PPE anchoring devices according to EN 795 standard or lifelines.





## BÛCHETTE 740® LOAD CAPACITIES

SPAN TABLES IN DAN/M², ACCORDING TO WIND LOAD

Limit deflection criterion taken into account: 1/150th according to French professional recommendations (RAGE) under wind load calculated as per EN EN 1991-1-4

PRESSURE		Span (m)	SUCTION	
2 supports	3 supports		2 supports	3 supports
0.75	0.75		0.75	0.75
245	245	<b>1.00</b>	551	276
204	204	<b>1.20</b>	459	230
175	175	<b>1.40</b>	394	197
153	153	<b>1.60</b>	345	172
136	136	<b>1.80</b>	306	153
123	123	<b>2.00</b>	239	138
111	111	<b>2.20</b>	180	125
102	102	<b>2.40</b>	138	115
94	94	<b>2.60</b>	109	106
88	88	<b>2.80</b>	87	98
82	82	<b>3.00</b>	71	92

A table calculated according to NV 65 rules is available upon simple request

Test report n°13294418-001-1



Test performed according to norm EN P 34-503-1 and interpretation according to interpretation as per Annexes E and N of the RAGE French professional recommendations

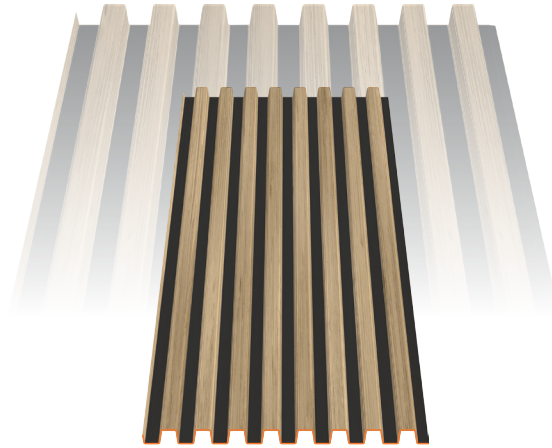
Seismic validation: CSTB DCC/CLC\_12\_229\_1 study report

Profiles Maximal Length : 6000mm

The ONWOOD range metal sheets are non-structural sheets according to standard EN EN 14782:2006, as per RAGE Professional Recommendations for Cladding of July 2014, not intended to receive PPE anchoring devices according to EN 795 standard or lifelines.



## BARO MINI 360



## LOAD CAPACITIES

SPAN TABLES IN DAN/M<sup>2</sup>, ACCORDING TO WIND LOAD

Limit deflection criterion taken into account: 1/150th according to French professional recommendations (RAGE) under wind load calculated as per EN EN 1991-1-4

PRESSURE		Span (m)	SUCTION	
2 supports	3 supports		2 supports	3 supports
572	925	1.0	572	875
331	642	1.2	331	608
209	472	1.4	209	447
140	361	1.6	140	342
98	255	1.8	98	255
72	186	2.0	72	186
54	140	2.2	54	140
41	108	2.4	41	108
33	85	2.6	33	85
26	68	2.8	26	68
21	55	3.0	21	55

The TOYS range metal sheets are non-structural sheets according to standard EN EN 14782:2006, as per RAGE Professional Recommendations for Cladding of July 2014, not intended to receive PPE anchoring devices according to EN 795 standard or lifelines.

Seismic validation: CSTB DCC/CLC\_12\_229\_1 study report

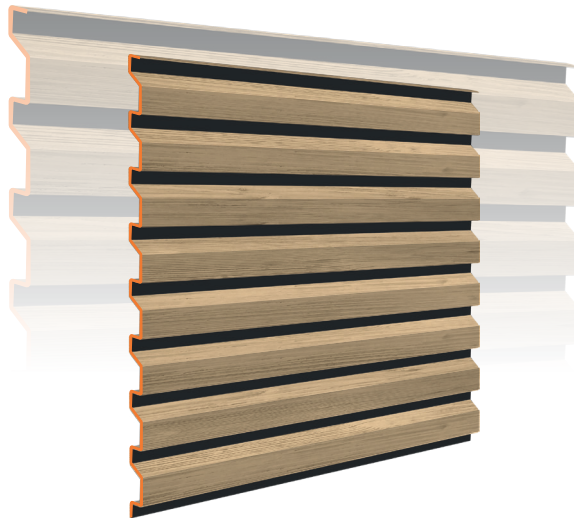


Calculation according to Eurocode III Part 1.3 (EN-1993)

Technical information established in accordance with the provisions of the professional recommendations for steel cladding of July 2014.



## CLAIREWOA **MINI** 440

**TOYS**


## LOAD CAPACITIES

SPAN TABLES IN DAN/M<sup>2</sup>, ACCORDING TO WIND LOAD

Limit deflection criterion taken into account: 1/150th according to French professional recommendations (RAGE) under wind load calculated as per EN EN 1991-1-4

PRESSURE			Span (m)	SUCTION		
2 supports	3 supports	4 supp. & +		2 supports	3 supports	4 supp.& +
448	746	754	1.0	364	721	656
259	548	436	1.2	211	515	380
163	345	275	1.4	133	325	239
109	231	184	1.6	89	217	160
77	162	129	1.8	62	153	112
56	118	94	2.0	45	111	82
42	89	71	2.2	34	84	62
32	68	55	2.4	26	64	47
25	54	43	2.6	21	51	37
20	43	34	2.8	17	41	30
17	35	28	3.0	13	33	24

The TOYS range metal sheets are non-structural sheets according to standard EN EN 14782:2006, not intended to receive PPE anchoring devices according to EN 795 standard or lifelines.

Seismic validation: CSTB DCC/CLC\_12\_229\_1 study report

Test report n°R134690349-001-1



Test performed according to norm EN P 34-503-1 and interpretation according to interpretation as per Annexes E and N of the RAGE French professional recommendations

Technical information established in accordance with the provisions of the professional recommendations for steel cladding of July 2014.

### BARO MAXI 630



### LOAD CAPACITIES

SPAN TABLES IN DAN/M<sup>2</sup>, ACCORDING TO WIND LOAD

Limit deflection criterion taken into account: 1/150th according to French professional recommendations (RAGE) under wind load calculated as per EN EN 1991-1-4

PRESSURE		Span (m)	SUCTION	
2 supports	3 supports		2 supports	3 supports
1704	1228	1.0	1704	1218
1420	959	1.2	1420	951
1217	774	1.4	1217	767
1043	640	1.6	1065	633
824	539	1.8	843	533
668	461	2.0	683	455
552	399	2.2	564	394
464	349	2.4	474	345
391	308	2.6	404	304
316	274	2.8	344	271
259	246	3.0	281	242

The ONWOOD range metal sheets are non-structural sheets according to standard EN EN 14782:2006, as per RAGE Professional Recommendations for Cladding of July 2014, not intended to receive PPE anchoring devices according to EN 795 standard or lifelines.

Seismic validation: CSTB DCC/CLC\_12\_229\_1 study report



Calculation according to Eurocode III Part 1.3 (EN-1993)

Technical information established in accordance with the provisions of the professional recommendations for steel cladding of July 2014.

## PLANCHE **MAXI** 900



## LOAD CAPACITIES

SPAN TABLES IN DAN/M², ACCORDING TO WIND LOAD

Limit deflection criterion taken into account: 1/150th according to French professional recommendations (RAGE) under wind load calculated as per EN EN 1991-1-4

PRESSURE			Span (m)	SUCTION		
2 supports	3 supports	4 supp. & +		2 supports	3 supports	4 supp. & +
423	423	426	1.0	846	547	551
353	353	355	1.2	588	456	459
302	302	304	1.4	401	391	393
244	265	266	1.6	268	342	344
172	235	237	1.8	188	304	301
125	212	209	2.0	137	274	220
94	192	157	2.2	103	234	165
72	161	121	2.4	80	180	127
57	137	95	2.6	63	142	100
46	113	76	2.8	50	113	80
37	92	62	3.0	41	92	65

The ONWOOD range metal sheets are non-structural sheets according to standard EN EN 14782:2006, as per RAGE Professional Recommendations for Cladding of July 2014, not intended to receive PPE anchoring devices according to EN 795 standard or lifelines.

Seismic validation: CSTB DCC/CLC\_12\_229\_1 study report

Test report n°R134436831-001-1

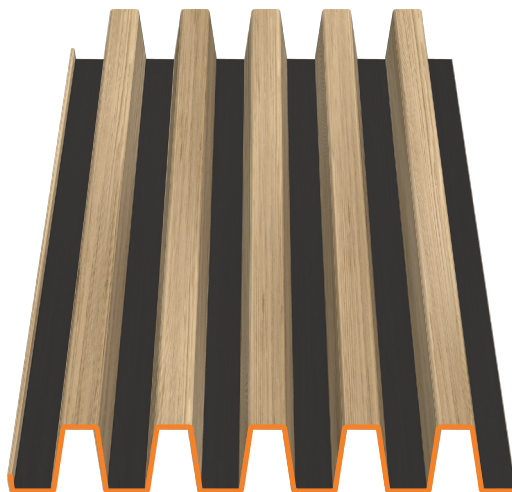


Test performed according to norm EN P 34-503-1 and interpretation according to interpretation as per Annexes E and N of the RAGE French professional recommendations

Technical information established in accordance with the provisions of the professional recommendations for steel cladding of July 2014.



## PEIGNE **MAXI** 500



## LOAD CAPACITIES

SPAN TABLES IN DAN/M<sup>2</sup>, ACCORDING TO WIND LOAD

Limit deflection criterion taken into account: 1/150th according to French professional recommendations (RAGE) under wind load calculated as per EN EN 1991-1-4

PRESSURE		Span (m)	SUCTION	
2 supports	3 supports		2 supports	3 supports
2139	1643	<b>1.0</b>	2139	1636
1782	1294	<b>1.2</b>	1782	1288
1528	1052	<b>1.4</b>	1528	1047
1337	875	<b>1.6</b>	1337	870
1188	741	<b>1.8</b>	1188	737
1039	637	<b>2.0</b>	1053	633
858	554	<b>2.2</b>	870	551
721	487	<b>2.4</b>	731	484
615	432	<b>2.6</b>	623	429
530	386	<b>2.8</b>	537	383
462	347	<b>3.0</b>	464	344

The ONWOOD range metal sheets are non-structural sheets according to standard EN EN 14782:2006, as per RAGE Professional Recommendations for Cladding of July 2014, not intended to receive PPE anchoring devices according to EN 795 standard or lifelines.

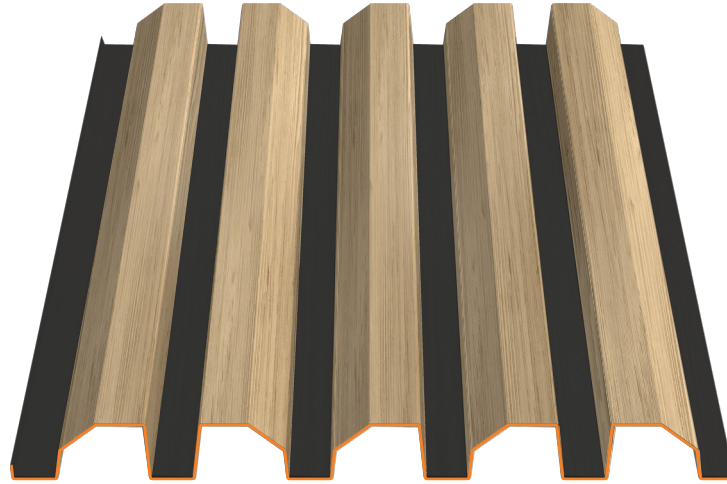
Seismic validation: CSTB DCC/CLC\_12\_229\_1 study report



Calculation according to Eurocode III Part 1.3 (EN-1993)

Technical information established in accordance with the provisions of the professional recommendations for steel cladding of July 2014.

## CHANFREIN **MAXI** 710



## LOAD CAPACITIES

SPAN TABLES IN DAN/M<sup>2</sup>, ACCORDING TO WIND LOAD

Limit deflection criterion taken into account: 1/150th according to French professional recommendations (RAGE) under wind load calculated as per EN EN 1991-1-4

PRESSURE			Span (m)	SUCTION		
2 supports	3 supports	4 supp. & +		2 supports	3 supports	4 supp. & +
811	811	816	1.0	1748	874	879
676	676	680	1.2	1456	728	733
579	579	583	1.4	1248	624	628
507	507	510	1.6	1092	546	549
450	450	453	1.8	884	485	488
405	405	408	2.0	716	437	440
369	369	371	2.2	592	397	400
338	338	340	2.4	497	364	366
312	312	314	2.6	424	336	338
290	290	291	2.8	342	312	314
270	270	272	3.0	278	291	293

The ONWOOD range metal sheets are non-structural sheets according to standard EN EN 14782:2006, as per RAGE Professional Recommendations for Cladding of July 2014, not intended to receive PPE anchoring devices according to EN 795 standard or lifelines.

Seismic validation: CSTB DCC/CLC\_12\_229\_1 study report

Test report n°R134436832-001-1



Test performed according to norm EN P 34-503-1 and interpretation according to interpretation as per Annexes E and N of the RAGE French professional recommendations

Technical information established in accordance with the provisions of the professional recommendations for steel cladding of July 2014.

## CLAIREWOA **MAXI** 800



## LOAD CAPACITIES

SPAN TABLES IN DAN/M<sup>2</sup>, ACCORDING TO WIND LOAD

Limit deflection criterion taken into account: 1/150th according to French professional recommendations (RAGE) under wind load calculated as per EN EN 1991-1-4

PRESSURE			Span (m)	SUCTION		
2 supports	3 supports	4 supp. & +		2 supports	3 supports	4 supp. & +
515	515	518	<b>1.0</b>	1206	603	607
429	429	432	<b>1.2</b>	1005	502	506
368	368	370	<b>1.4</b>	861	431	433
322	322	324	<b>1.6</b>	665	377	379
286	286	288	<b>1.8</b>	525	335	337
258	258	259	<b>2.0</b>	412	301	303
234	234	236	<b>2.2</b>	309	274	276
215	215	216	<b>2.4</b>	238	251	253
198	198	199	<b>2.6</b>	187	232	233
169	184	185	<b>2.8</b>	150	215	217
137	172	173	<b>3.0</b>	122	201	202

The ONWOOD range metal sheets are non-structural sheets according to standard EN EN 14782:2006, as per RAGE Professional Recommendations for Cladding of July 2014, not intended to receive PPE anchoring devices according to EN 795 standard or lifelines.

Seismic validation: CSTB DCC/CLC\_12\_229\_1 study report

Test report n°R134294628-001-1



Test performed according to norm EN P 34-503-1 and interpretation according to interpretation as per Annexes E and N of the RAGE French professional recommendations

Technical information established in accordance with the provisions of the professional recommendations for steel cladding of July 2014.









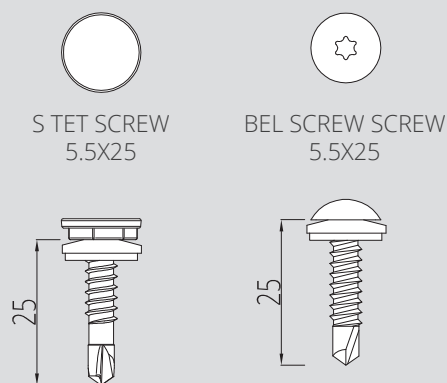
# INSTALLATION



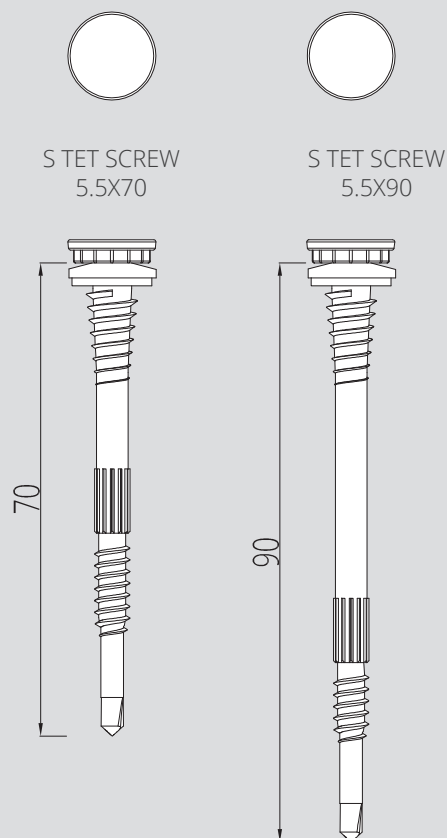
### FIXING THE PANELS

The colour of the screws used in your project with the ON WOOD® range must be consistent with the colour of the bottom of the ON WOOD® ribs.

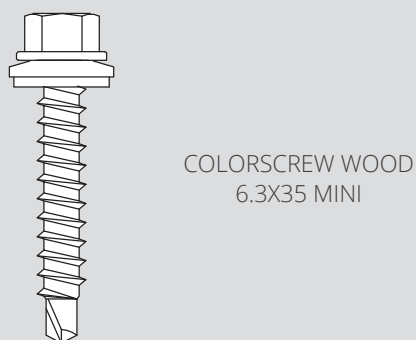
#### FIXING ON METAL FRAME



#### FIXING FOR DOUBLE-SKIN CLADDING

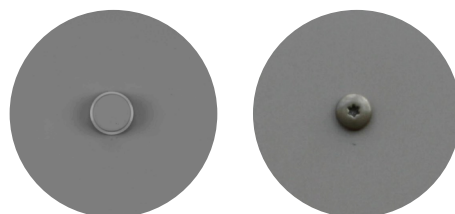


#### FIXING ON TIMBER FRAME



Available in the RAL color of your choice

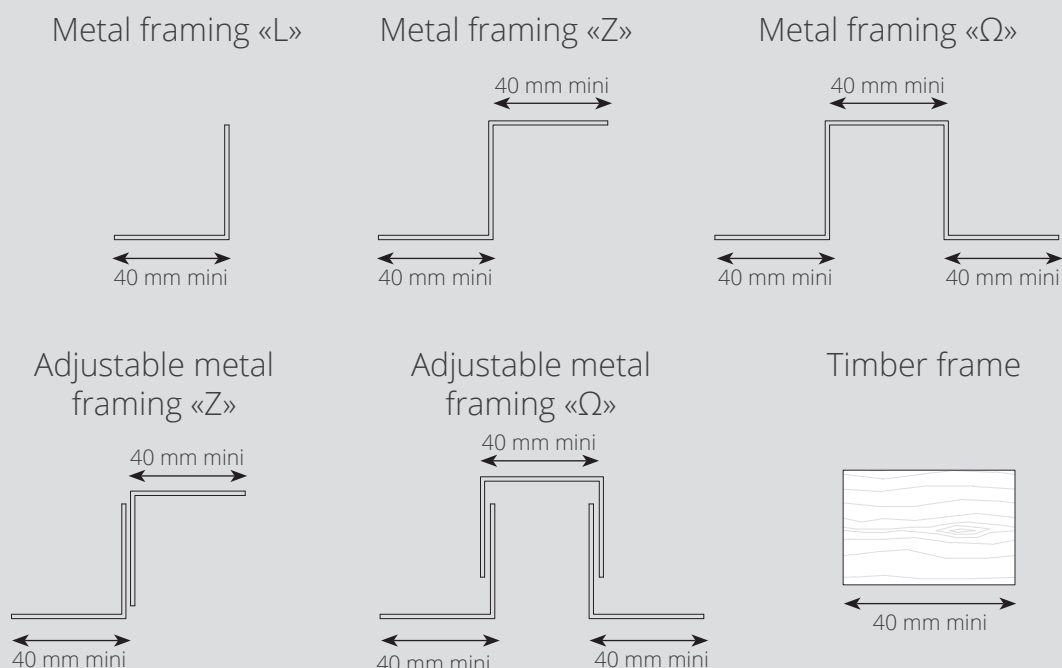
#### S TET SCREW HEAD BEL SCREW SCREW HEAD



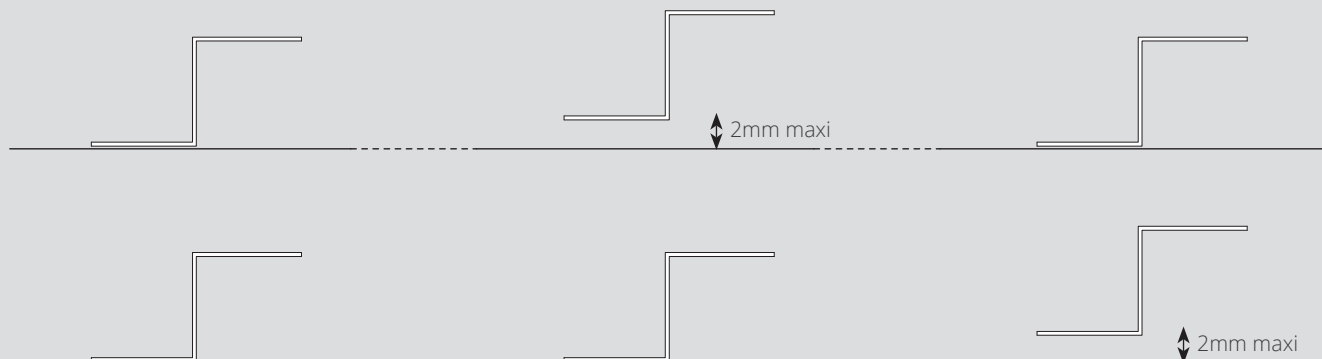
S TET HEADS are screwed using a specific tool, available from ATELIERS 3S.

ON WOOD® screws are a visible part of the façade. As well as complying with standards, particular care must be taken to ensure that it looks good. The shape of the screw head and its colour can be adapted to each building.

## SECONDARY FRAMING



## FLATNESS OF SUPPORT

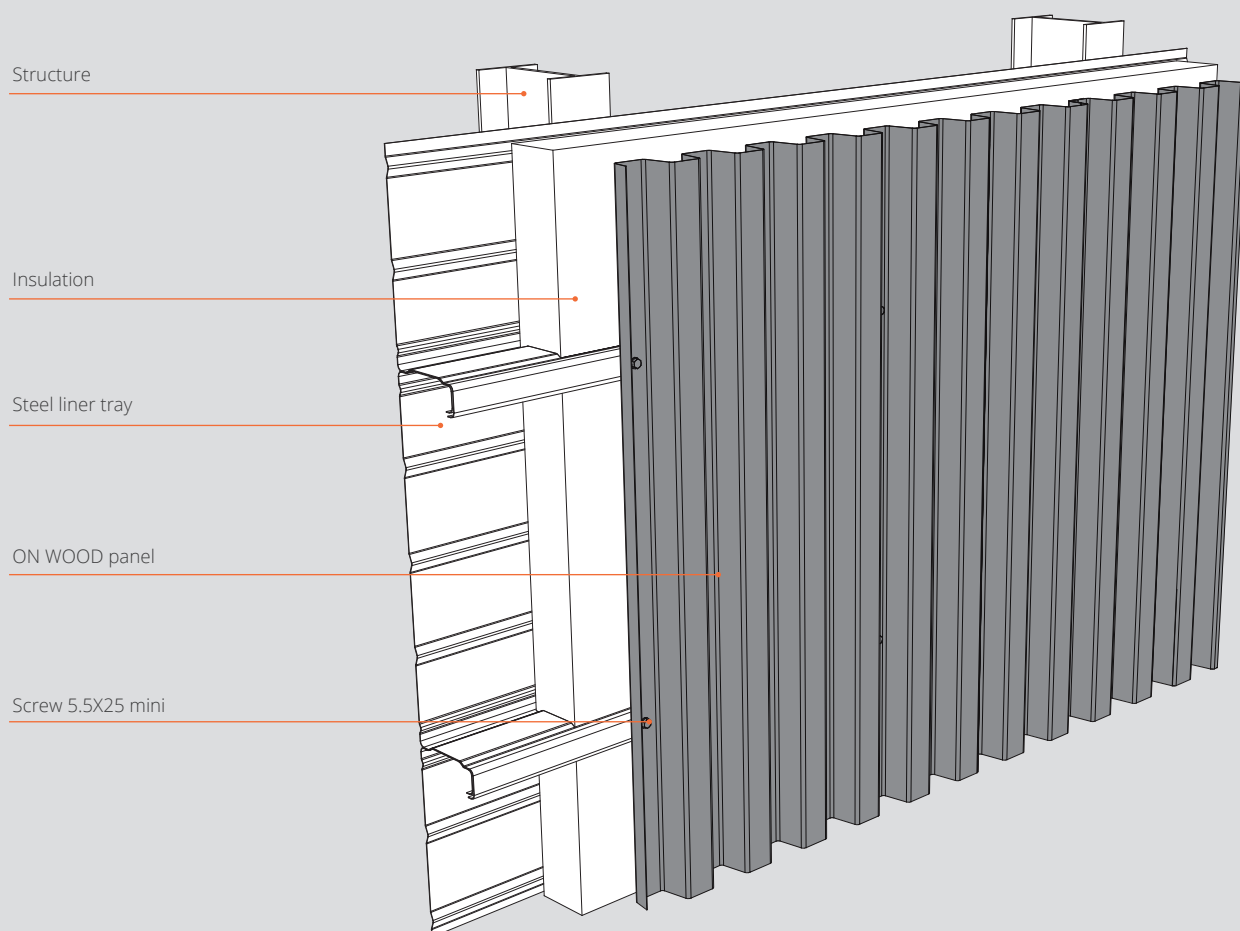


The secondary framing elements must be sized by the installation company. Metal framing should be at least 1.5mm thick.

The flatness of the support is essential when installing the panels.

Regardless of the type of secondary framework chosen (metal or wood), it must comply with a maximum permissible **co-planarity of 2mm over three supports.**

## DOUBLE-SKIN INSTALLATION / VERTICAL APPLICATION



### BUILDINGS WITH METAL FRAMING

ON WOOD® is a traditional cladding system installed in accordance with the RAGE rules (French steel cladding installation recommendations). It is perfectly suited to double-skin installation. The flatness of the support is very important for a quality finish, and an adjustable secondary framework is recommended for horizontal installation.

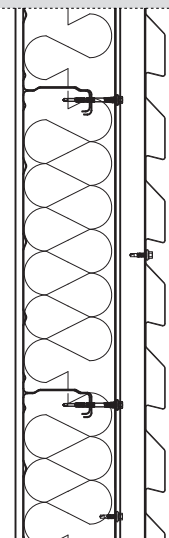
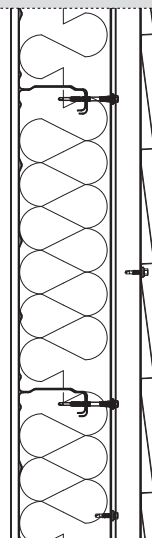
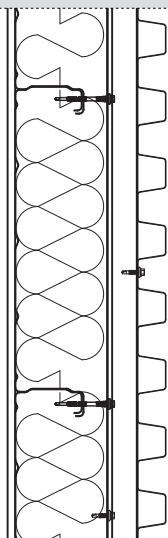
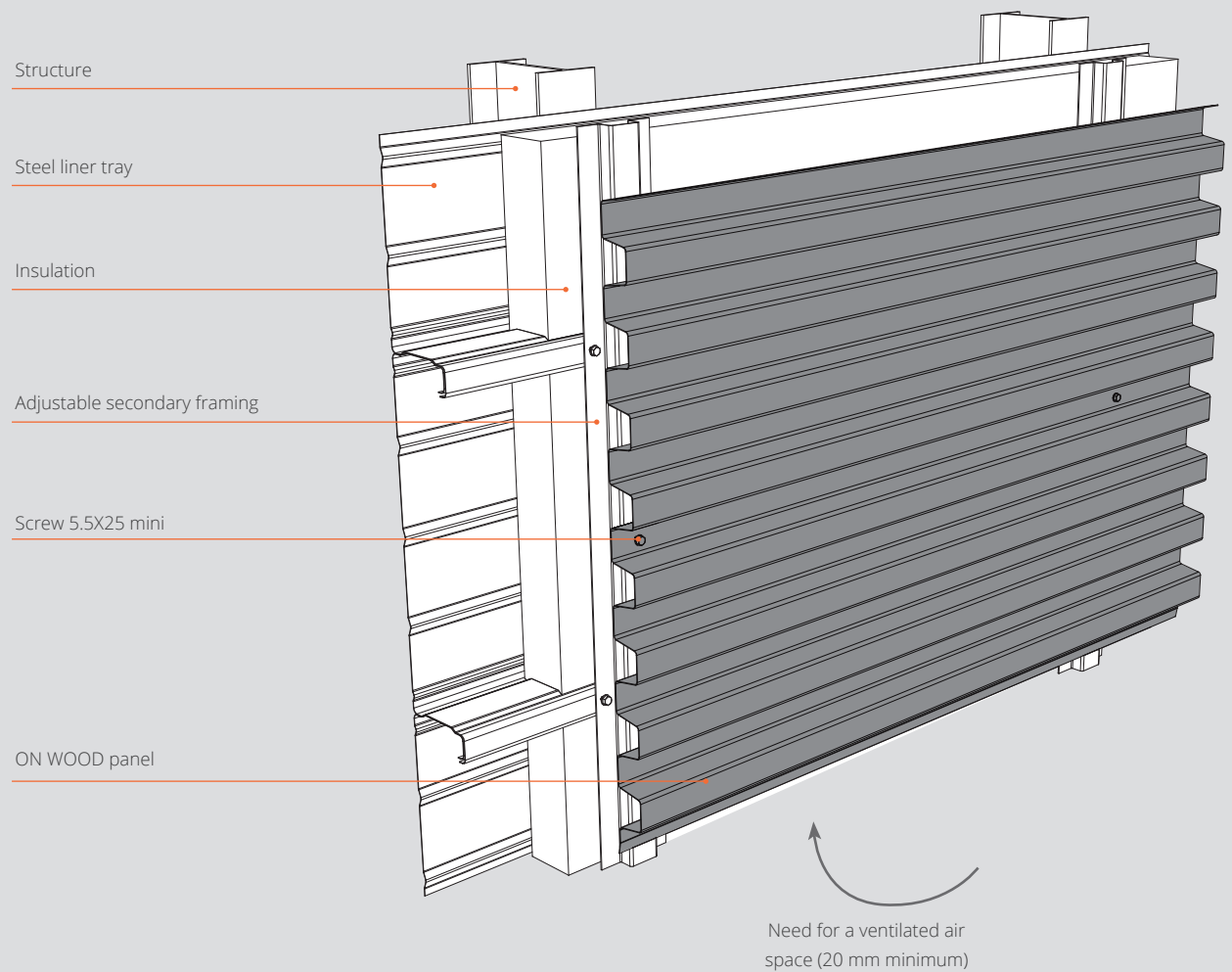
The sheets should be fixed in accordance with RAGE recommendations, using the appropriate screws and bolts according to the type of building. The layout must take into account the maximum length of the sheets: 6000mm (13000mm for BARO 710). Specific finishing elements must be provided, examples in the finishing profiles section.

CAUTION : PLANCHETTE 800® can only be installed vertically.

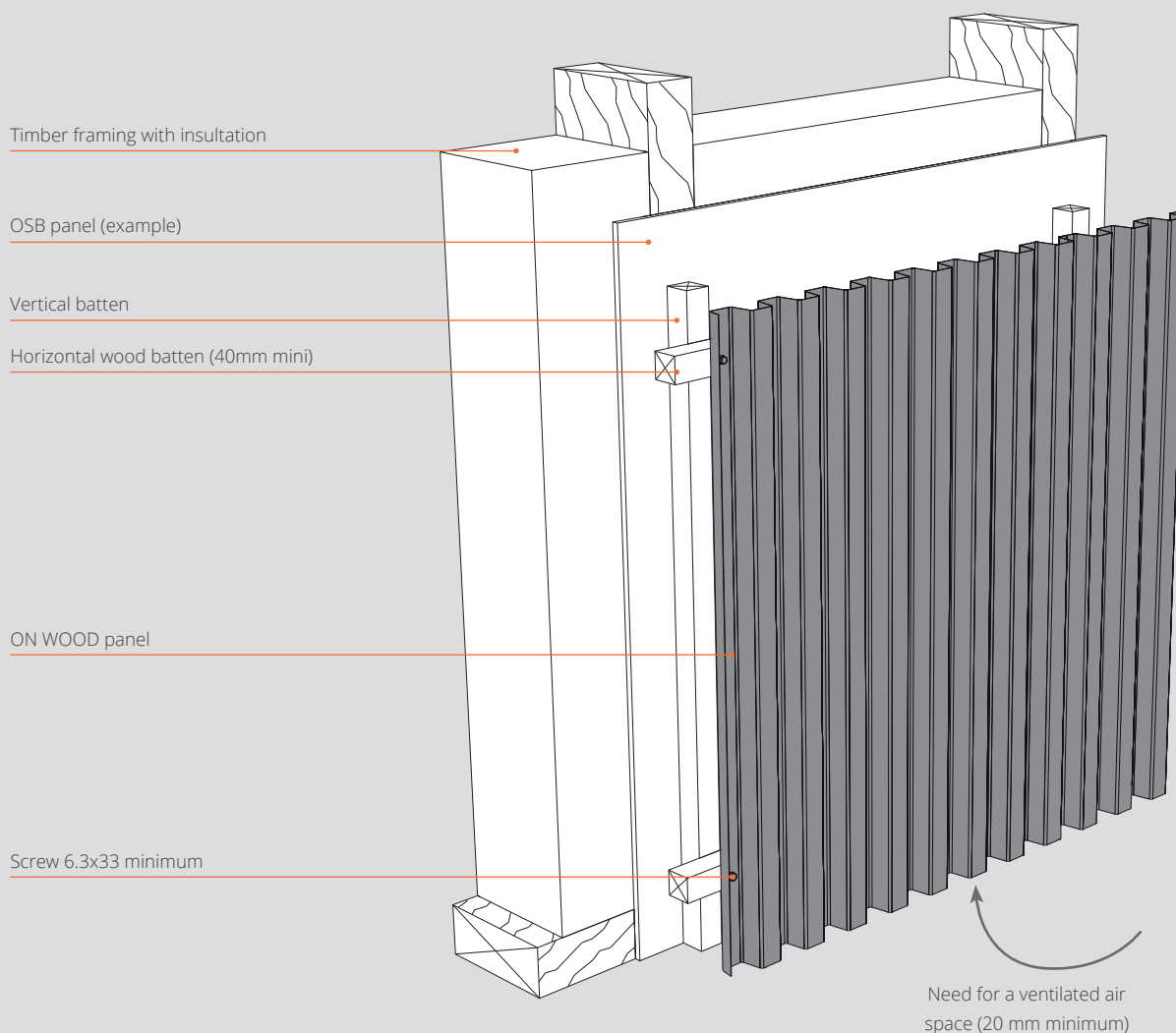
Regular cleaning of the cladding with water should be carried out to avoid the accumulation of dust on horizontally laid cladding.



## DOUBLE-SKIN INSTALLATION / HORIZONTAL APPLICATION



### TIMBER-FRAMED WALLS / VERTICAL APPLICATION



### TIMBER-FRAMED WALLS

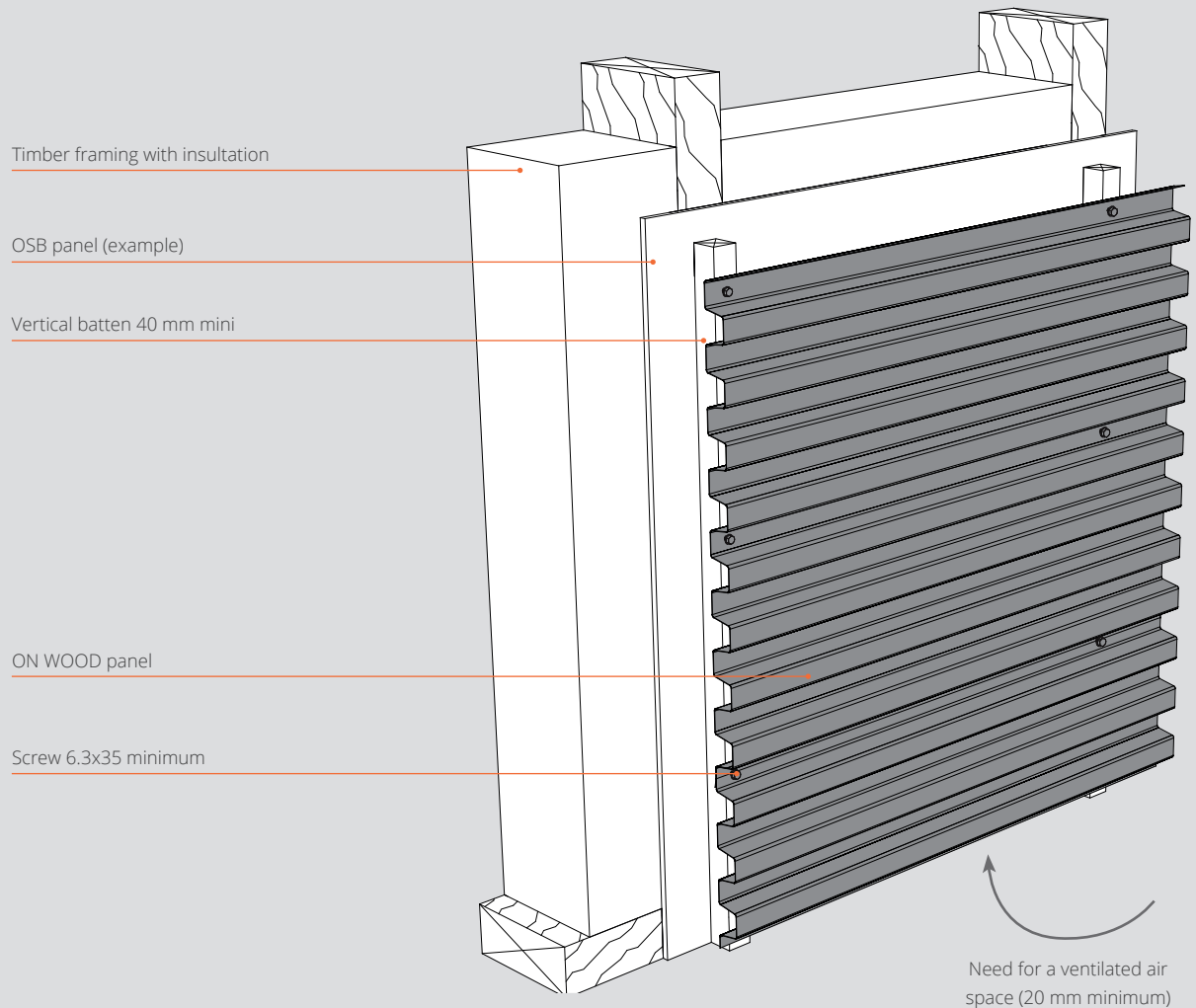
The framework and its installation must comply with Cahier CSTB 3316.

In the case of a timber frame, a ventilated air space must be provided.

ON WOOD® cladding complies with RAGE rules and does not require an additional rain screen.

The flatness of the support is very important for a quality finish, and an adjustable secondary framework is recommended. The sheets should be fixed with the appropriate screws according to the type of building.

## TIMBER-FRAMED WALLS / HORIZONTAL APPLICATION



## TIMBER-FRAMED WALLS

The framework and its installation must comply with Cahier CSTB 3316.

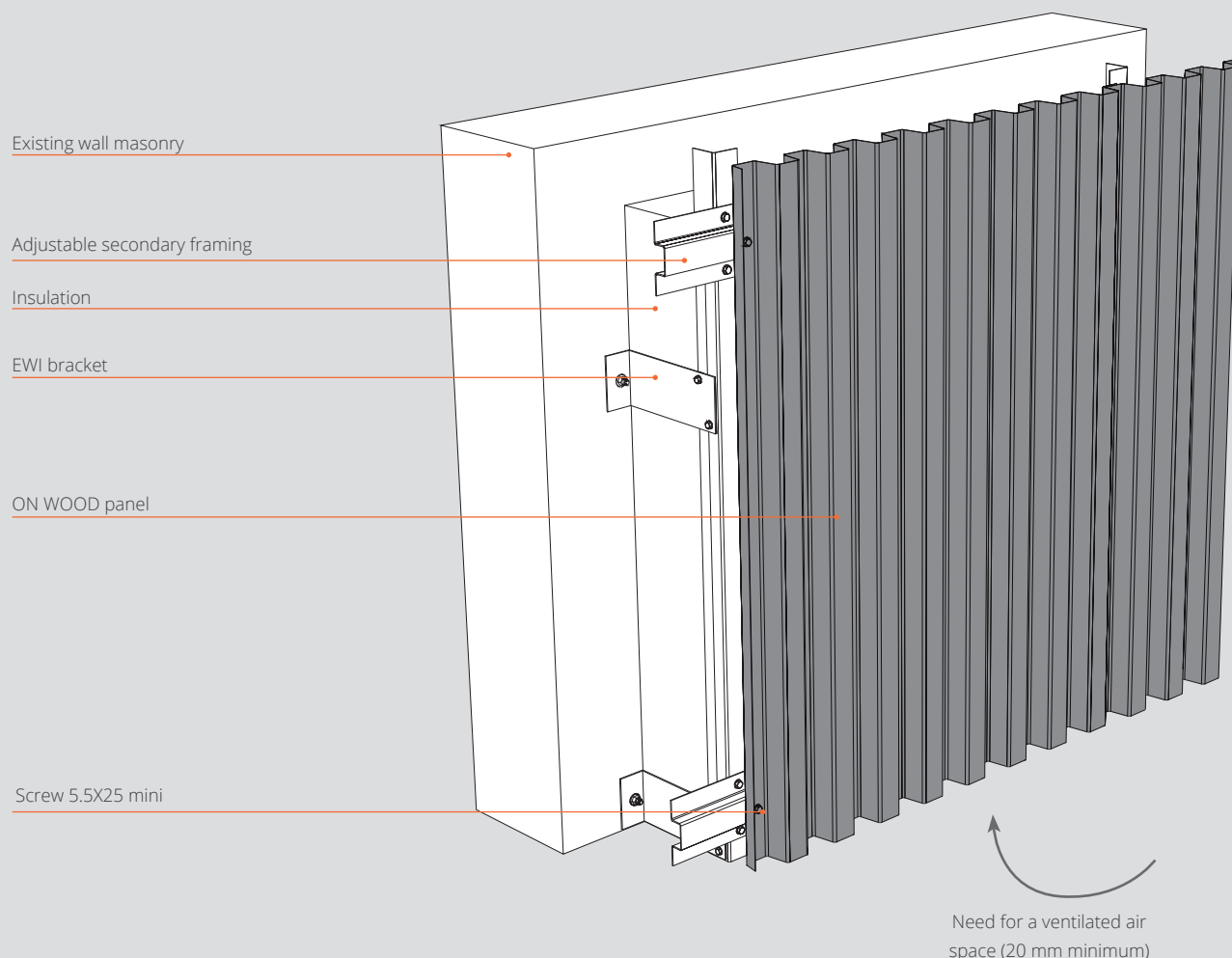
In the case of a timber frame, a ventilated air space must be provided.

ON WOOD® cladding complies with RAGE rules and does not require an additional rain screen.

The flatness of the support is very important for a quality finish, and an adjustable secondary framework is recommended. The sheets should be fixed with the appropriate screws according to the type of building.



## EXTERNAL WALL INSULATION (EWI) VERTICAL APPLICATION



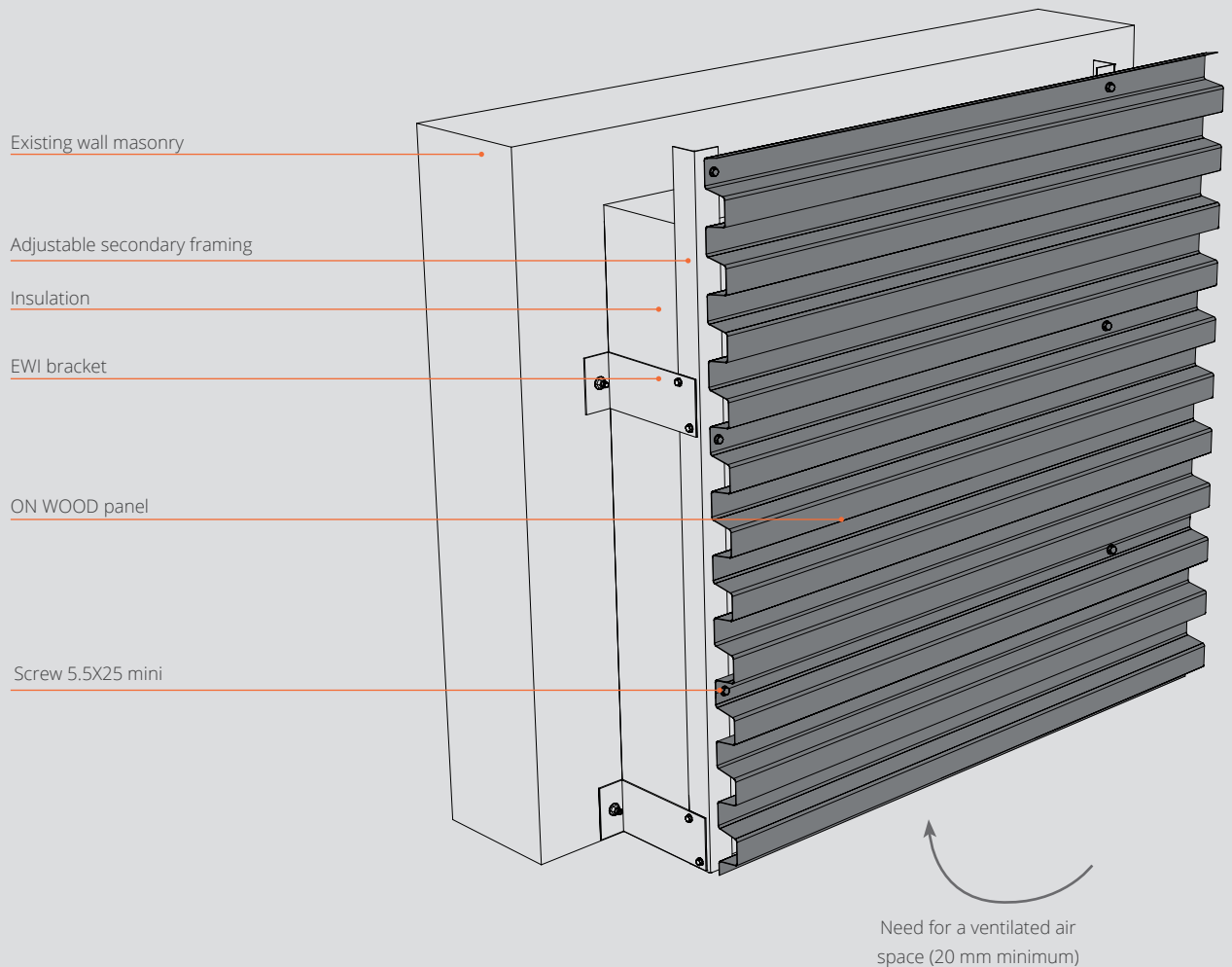
## EXTERNAL WALL INSULATION RENOVATION

The ON WOOD® range can be used in the construction or renovation of buildings with external wall insulation (EWI), as all the profiles in the range are suitable for this type of installation.

The framework and its installation must comply with CSTB Specification 3194. Load-bearing profiles must be fitted at the top and bottom of the cladding, and must be sized accordingly.

The flatness of the support is very important for a quality finish, and an adjustable secondary framework is recommended.

## EXTERNAL WALL INSULATION (EWI) HORIZONTAL APPLICATION



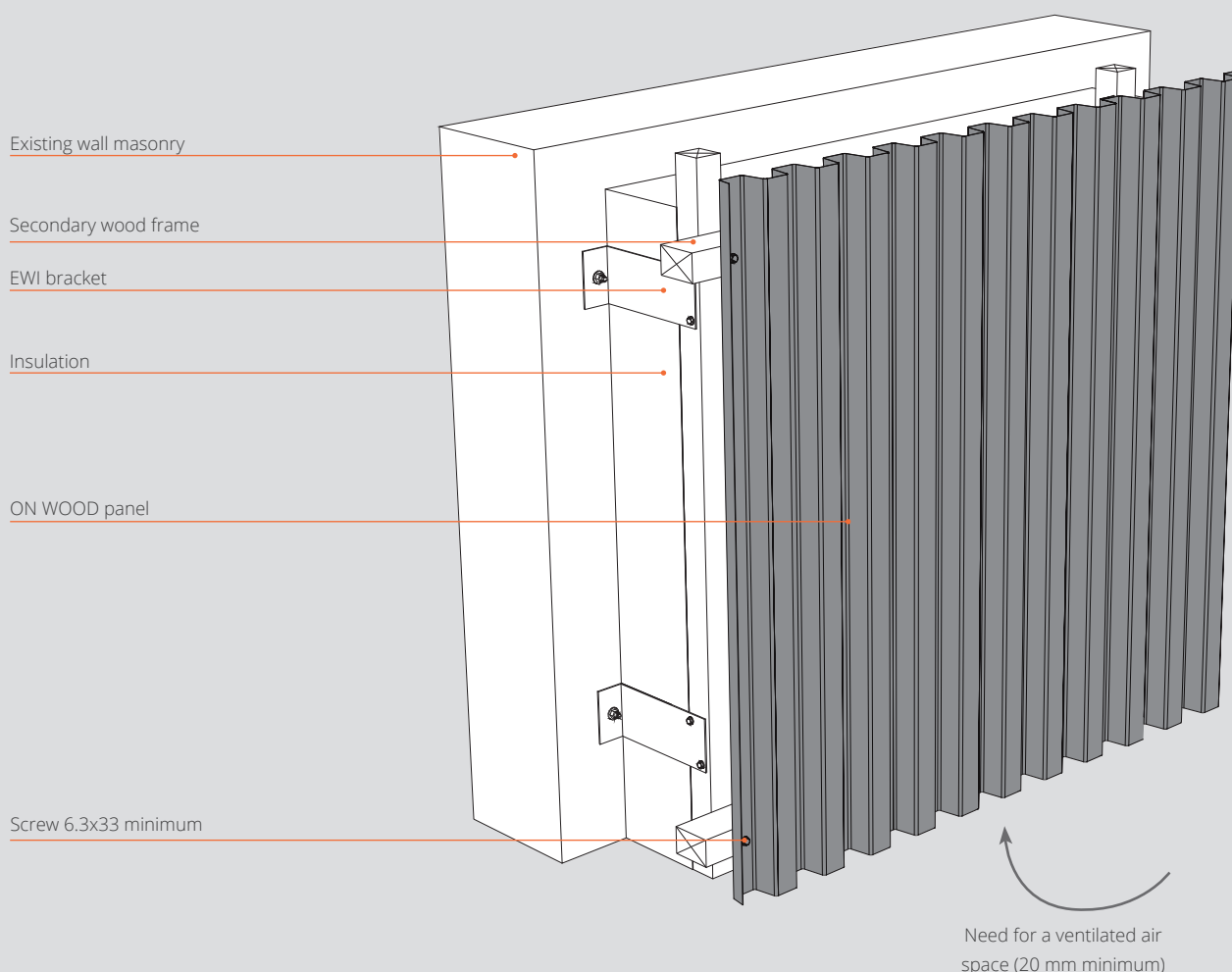
## EXTERNAL WALL INSULATION RENOVATION

The ON WOOD® range can be used in the construction or renovation of buildings with external wall insulation (EWI), as all the profiles in the range are suitable for this type of installation.

The framework and its installation must comply with CSTB Specification 3194. Load-bearing profiles must be fitted at the top and bottom of the cladding, and must be sized accordingly.

The flatness of the support is very important for a quality finish, and an adjustable secondary framework is recommended.

## EXTERNAL WALL INSULATION (EWI) TIMBER FRAME VERTICAL APPLICATION



### EWI / SECONDARY WOOD FRAME

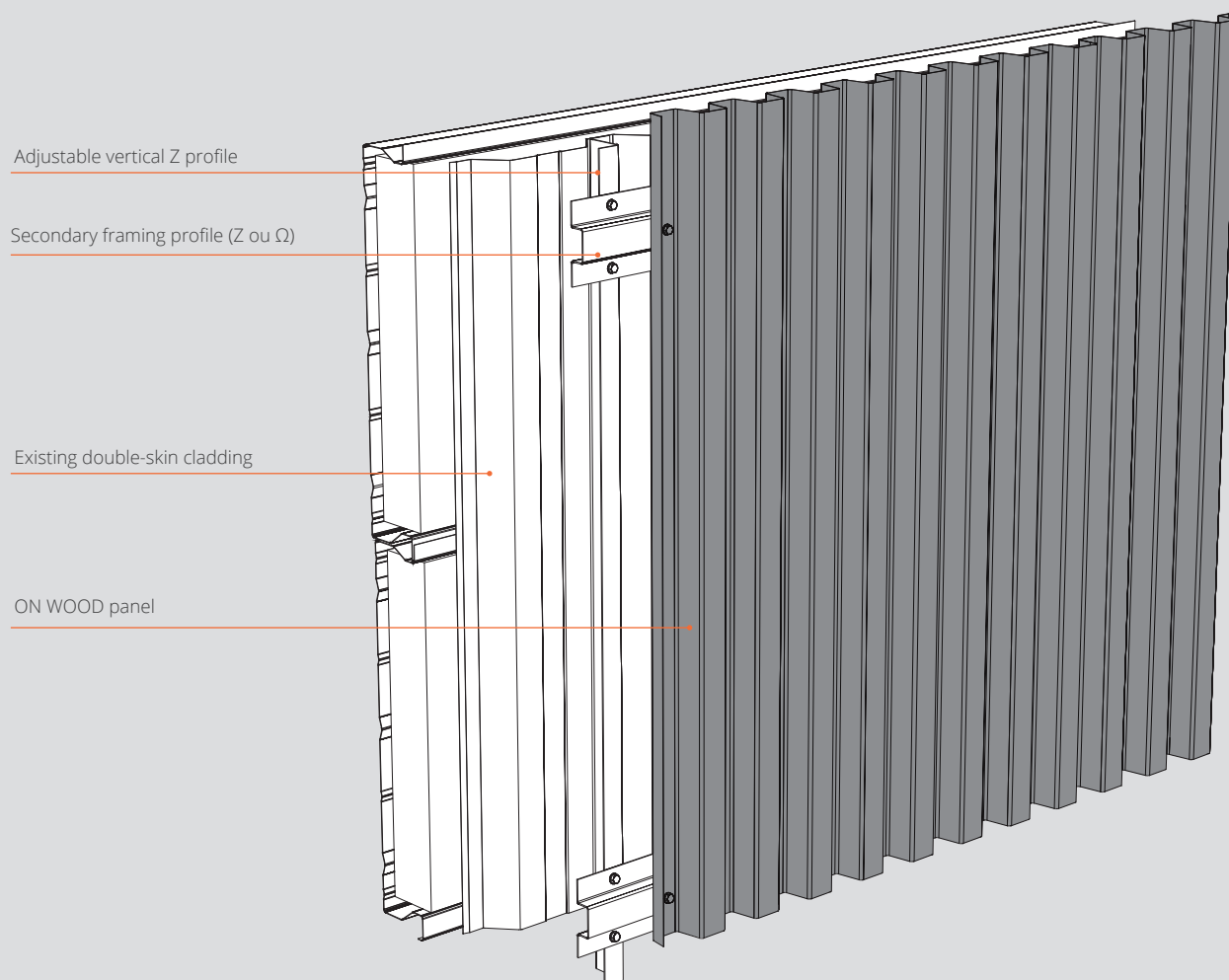
The ON WOOD® range can be used in the construction or renovation of buildings with external wall insulation (EWI), as all the profiles in the range are suitable for this type of installation.

In the case of a timber frame, the frame and its installation must comply with Cahier CSTB 3316.

A ventilated air space must be provided. ON WOOD® cladding complies with RAGE rules and does not require an additional rain screen.



## INSTALLATION ON EXISTING DOUBLE-SKIN CLADDING



## RENOVATING A BUILDING WITHOUT REMOVING THE EXISTING CLADDING

The ON WOOD® range can be used for renovation projects on existing wall cladding.

The flatness of the support is very important for a quality installation, adjustable framework is recommended.



# FINISHING PROFILES





Beyond the aesthetic quality of its cladding panels, a successful metal facade requires precise and well-designed finishing profiles. ATELIERS 3S takes particular care to offer discreet elements that connect with the styles of the associated cladding.

In these pages, you'll find a selection of models that are fully adaptable to the actual dimensions of your project.

No matter how precise your installation is, finishing profiles will always be custom-made elements. Please don't hesitate to provide us with your exact dimensions and any other installation drawings.

For the finishing profiles in the ON WOOD® range, we recommend 2 types of finish, either in the same wood colour as your cladding, or in NERRO matt black from the ATELIERS 3S catalogue. It's up to you to choose the look you want for your facades.

### NERRO FINISHINGS

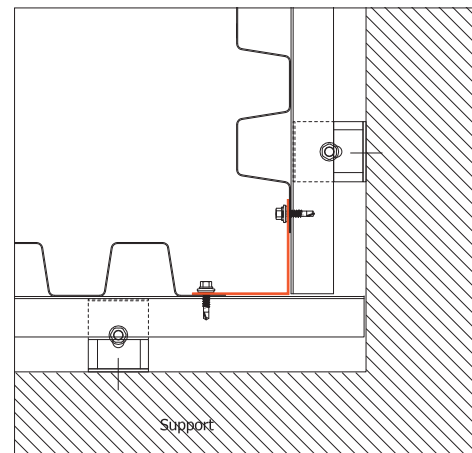
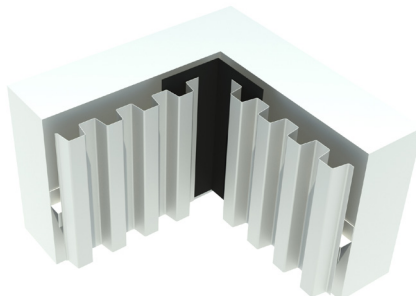
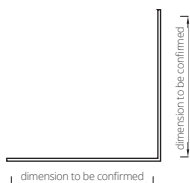


### WOOD EFFECT FINISHINGS



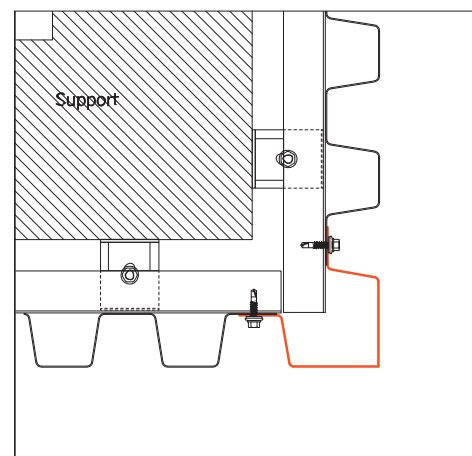
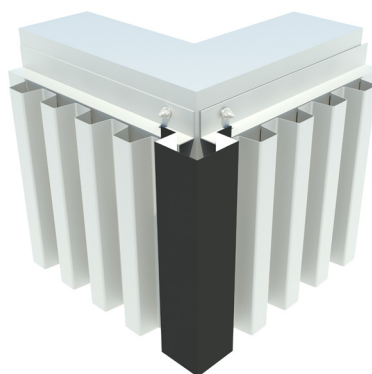
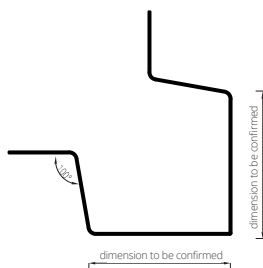
## INSIDE CORNER

VERTICAL APPLICATION



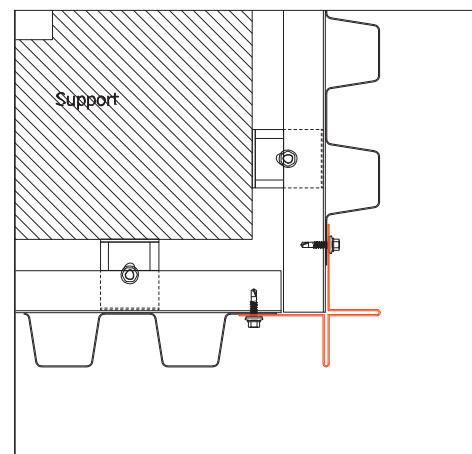
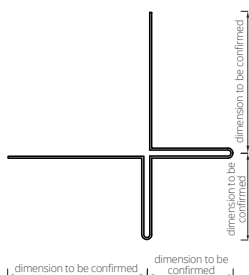
## OUTSIDE CORNER

VERTICAL APPLICATION

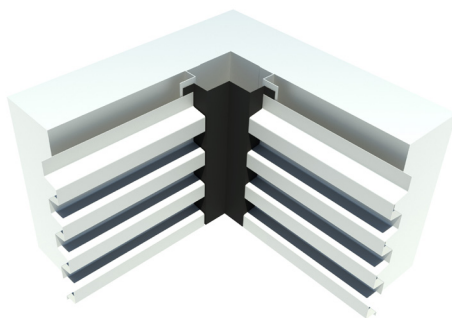
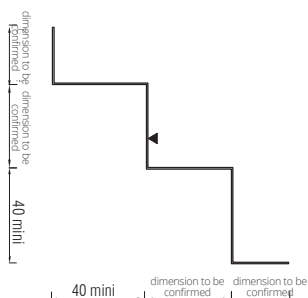


## OUTSIDE CORNER

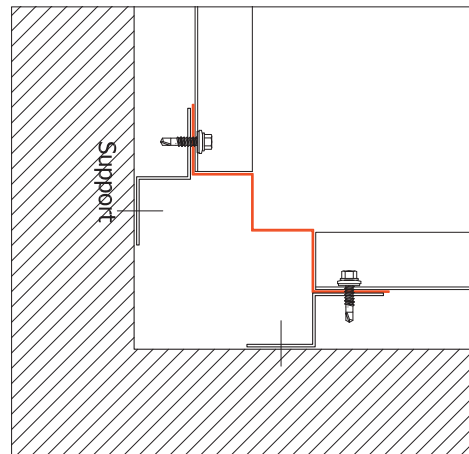
VERTICAL APPLICATION



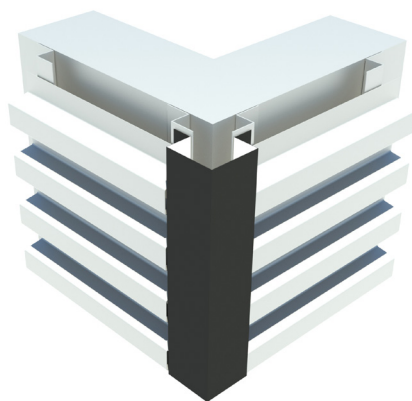
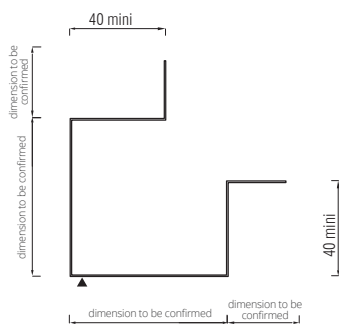
## INSIDE CORNER



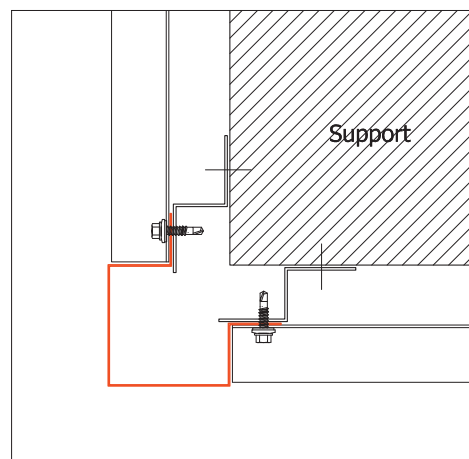
### HORIZONTAL APPLICATION



## OUTSIDE CORNER

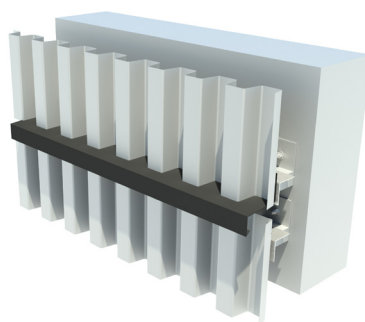
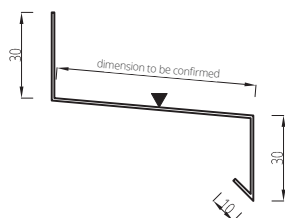


### HORIZONTAL APPLICATION

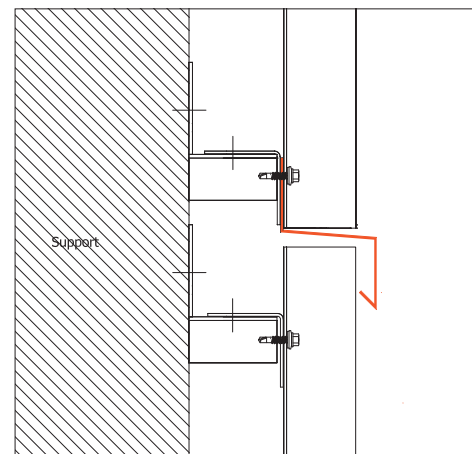




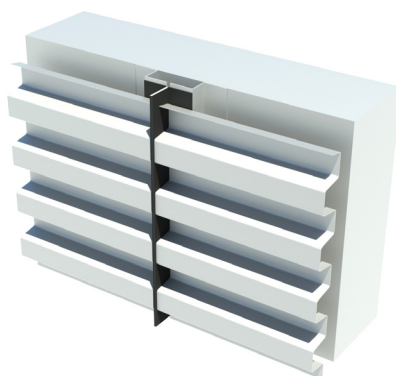
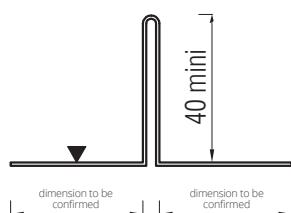
## JUNCTION



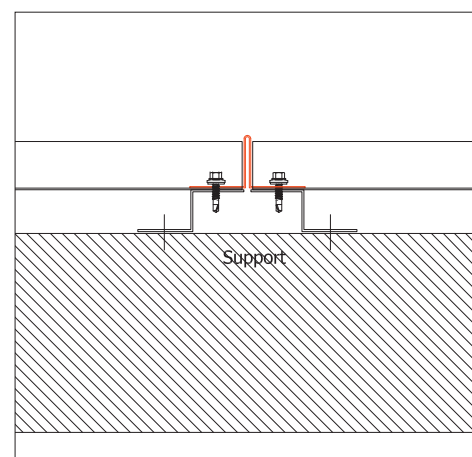
### DRIP EDGE VERTICAL APPLICATION



## JUNCTION

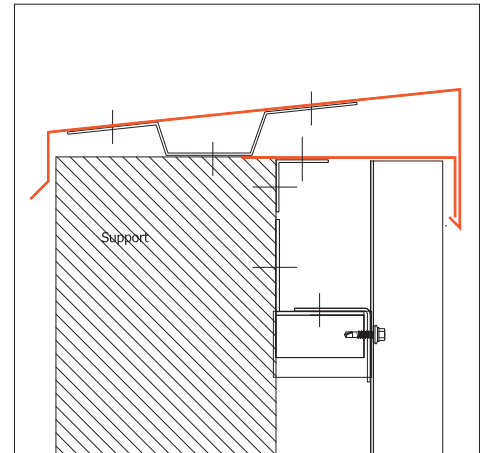
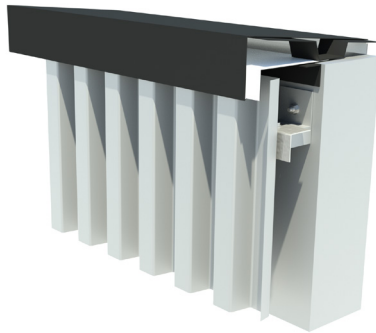
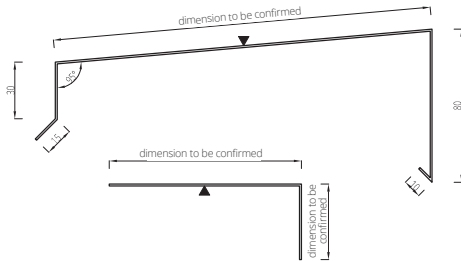


### PIN JOINT HORIZONTAL APPLICATION



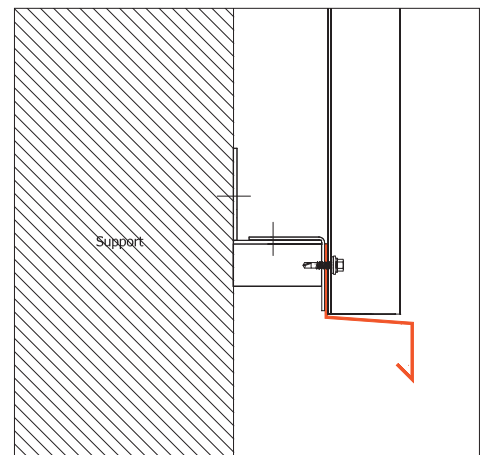
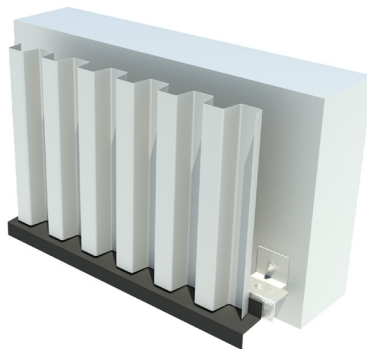
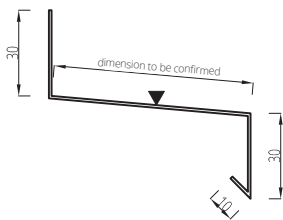
## FACADE TOP

### COPING



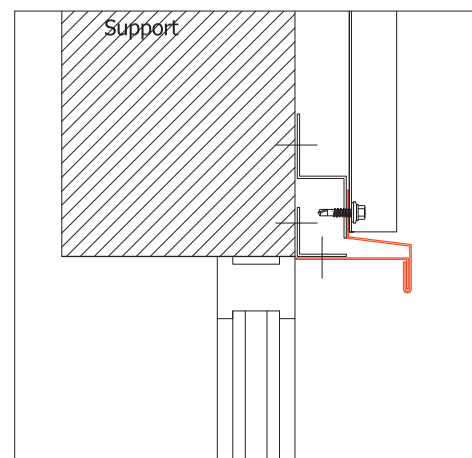
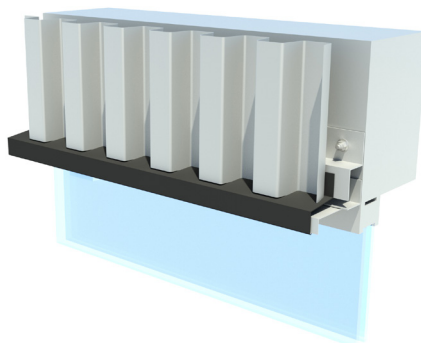
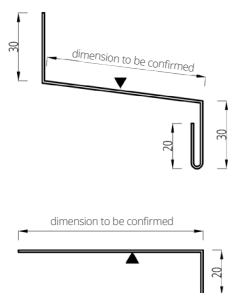
## FACADE BOTTOM

### DRIP



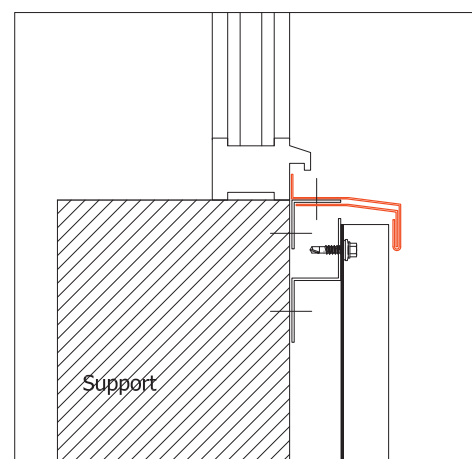
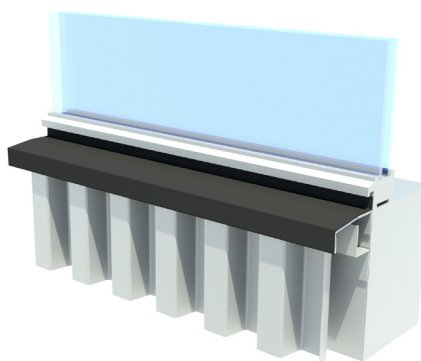
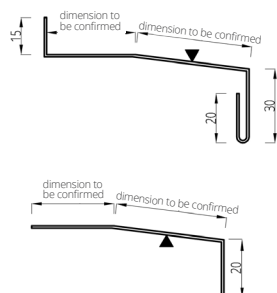
## OPENING

LINTEL



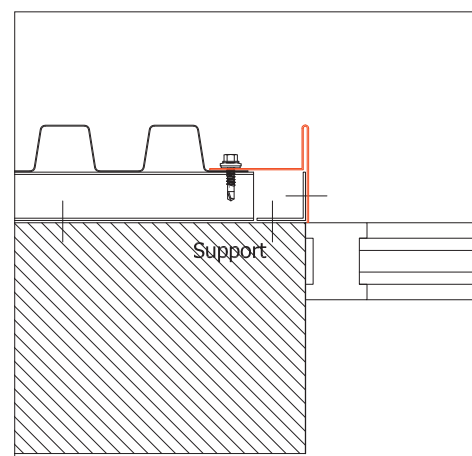
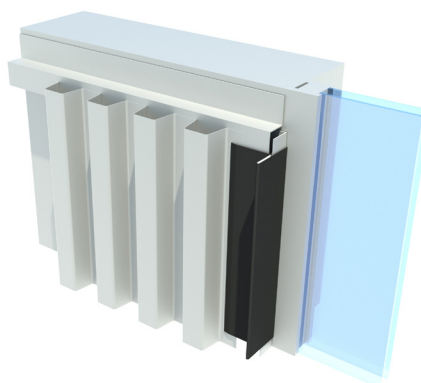
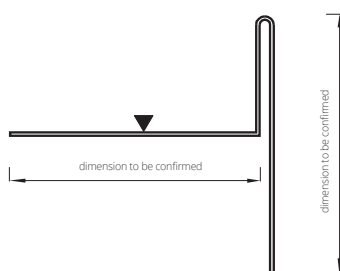
## OPENING

SILL



## OPENING

JAMB









# PROJECTS GALLERY

# Your source of inspiration

An exclusive search experience,  
available only on the **ATELIERS**  app.

Discover our projects from a new perspective



BY  
**PROJECTS**

BY  
**PRODUCTS**

BY  
**COLORS**

BY  
**LOCATION**

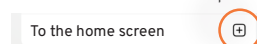


Tip to add the app directly  
to your home screen  
without going through the  
Store:

1- At the bottom of your page click here:



2- Scroll and choose the option:













COLOR CHART



## Colours and materials **used**

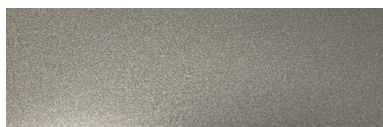
### ORIGINAL

Exclusive, ultra resistant colours that meet the requirements of the 3S® range.

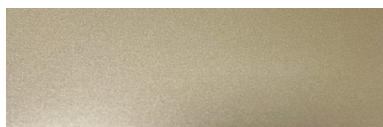
#### METALLIC



METAL 0207 35µm



PEARL 0208 35µm



PLATINUM 0206 35µm

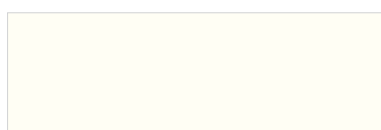


INTENSE GOLD 6995 35µm



COPPER 0603 35µm

#### SATIN



COTTON 0201 35µm



RAL 5008 - OCEAN 25µm



DUVET 0202 35µm



RAL 7032 - SILEC GREY 35µm



POWDER 0203 35µm



RAL 7022 - EGGSHELL 35µm



RAL 7037 35µm



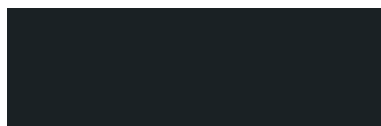
POP 0204 35µm



RAL 7016 - ANTHRACITE GREY 35µm



SPRING 0205 35µm



RAL 7021 - BLACK GREY 25µm



RAL 9005 - DEEP BLACK 35µm



Please contact us for further information on our RAL colour chart and our special custom-designed textured coatings.

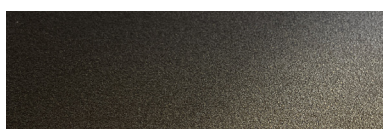
## Colours and materials **used**

### MATERIALS

Coatings that are as fabulous as the materials.



OXYDE 0602 35µm



DARK BRONZE 0604 50µm



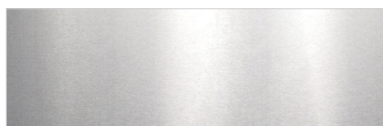
INTENSE GOLD 6995 35µm



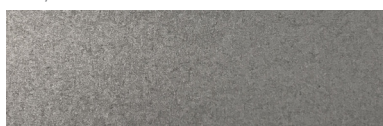
COPPER 0603 35µm

### ROUGH

Reveal the nobility of raw materials.



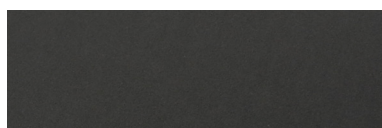
STAINLESS STEEL 0302  
Shiny



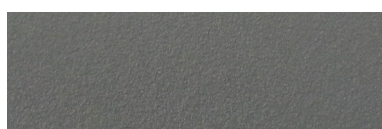
SURFACE GRAIN 0301  
Galvanized steel with high-precision grain

### ZINC SPIRIT

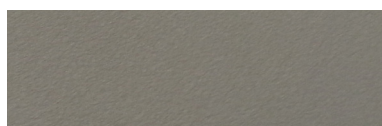
Deep matte and very fine texture for a true-to-life zinc effect.



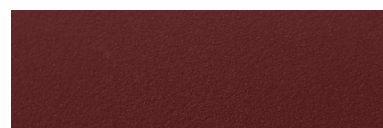
NERRO 0104 50µm



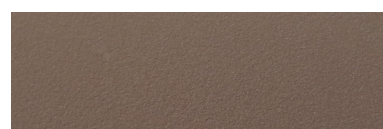
GALEO 0103 50µm



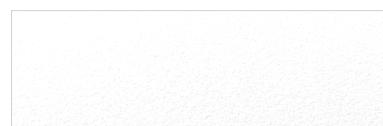
AZURO 0102 50µm



VINO 0106 50µm



VOLCANO 0101 50µm



BIANCO 0105 50µm

### ONWOOD

True-to-life matte wood texture. Available in all wood finish or with optional black strips "Colorigami® Process".



SILVER TECK (BLACK BANDS) 0409 47µm



SILVER TECK (ALL WOOD) 0408 47µm



NATURAL OAK (BLACK BANDS) 0406 47µm  
0416 (MINI)  
0426 (MAXI)



NATURAL OAK (ALL WOOD) 0403 47µm



HAZELNUT OAK (BLACK BANDS) 0405 47µm



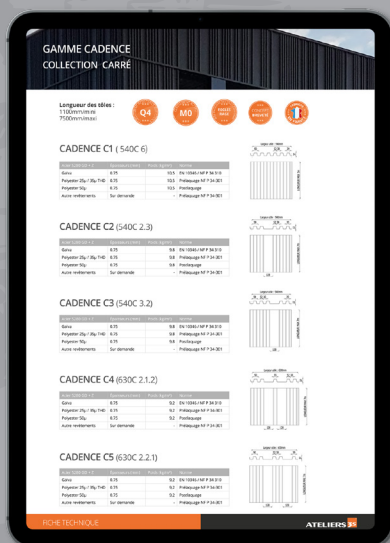
HAZELNUT OAK (ALL WOOD) 0402 47µm



COFFEE OAK (BLACK BANDS) 0407 47µm



COFFEE OAK (ALL WOOD) 0404 47µm



- TECHNICAL DATASHEETS
- INSTALLATION INSTRUCTIONS
- GUIDES TO FINISHING FOLDS
- CCTP (SPECIAL TECHNICAL SPECIFICATIONS)
- FILES DWG, BIM, SKETCHUP
- ETC.

Find us at:  
[www.ateliers3s.com](http://www.ateliers3s.com)



**VISIT OUR SHOWROOM**

100 AVENUE DAUMESNIL 75012 PARIS - FRANCE

GRUPE



**FIMAVI**



O N W O O D

**ATELIERS**   
metal cladding creators

Rue verte, ZI Ladoux - F-63118 Cébazat - France  
T. +33(0)4 73 88 59 50  
contact@ateliers3s.com - [www.ateliers3s.com](http://www.ateliers3s.com)

02/02/2026